

AMERICAN SHIRE HORSE ASSOCIATION

est. 1885

Established 1885

2014 SPRING BULLETIN





AMERICAN SHIRE HORSE ASSOCIATION

est. 1885

Established 1885

Board of Directors

Todd Riedel ~ President

6168 Greenwich Rd., Seville, OH 44273
(330) 419-0346 traillightfarms@aol.com

Karla Stoner ~ Vice President

8401 Peters Rd., Frederick, MD 21704
(301) 874-3250 bloomforge@peoplepc.com

Sharon McLin ~ Treasurer

P.O. Box 957, Silt, CO 81652
970-876-5979 msbshire@sopris.net

Leanne Hoagland ~ Editor

PO Box 95, Glendive, MT 59330
(406) 687-3004 bsshires@midrivers.com

James P. Edmiston

311 Horton Road, Edgewood, NM 87015
505-286-6233 jedmis@us.ibm.com

Travis Howell

370 W 140 N, Blackfoot ID 83221
208-681-9299 howetra2@isu.edu

Danelle Kinney

21847 310th St., Red Wing, MN 55066
(651) 380-9600 haugenhill@hotmail.com

Gene McCaffrey

267 Sholtes Rd., Schoharie, NY 12157
(518) 872-1295 oxkill@capital.net

Kim Parrington- Murchison

0185 CR 225, Rifle, CO 81650
(970) 625-1142 thshire@sopris.net

Secretary

Myrna Rhinehart ~ Secretary

P.O. Box 408 ~ Lake Delton, WI 53940 Phone: 888-302-6643
email: secretary@shirehorse.org

ASHA Fee Schedule

Effective 8/1/12

| <u>ASHA Membership</u> | US Address | For- eign |
|---|-------------------|----------------------|
| Annual Membership (until 12/31; for next year after 11/1) | \$50 | \$65 |
| Two-Year Membership | \$90 | \$120 |
| Three-Year Membership | \$130 | \$160 |
| Annual Youth Membership | \$15 | \$25 |
| Friend of the Shire (Info & Website; no vote, no discounts) | \$25 | \$40 |
| Life Membership | \$800 | \$1000 |
| Life Membership, Annual Installments For 5 Years | \$175 | \$215 |
| Corporate Membership (5 Year Membership) | \$275 | N/A |

| <u>Registration Fees</u> | Member | Non- Mem- ber |
|---|-------------------------------|------------------------------|
| Fillies/Colts up to 6/1 of yearling year (year after birth) * | \$100 | \$200 |
| Fillies/Colts up to 6/1 of 2 yr. old year * | \$200 | \$400 |
| Shire Mares/Stallions after 6/1 of 2 yr. old year * | \$400 | \$800 |
| Geldings, Any Age * | \$100 | \$200 |
| Shire Sport Horses * | \$125 | \$125 |
| DNA kit not with registration | \$40 | \$80 |
| Conversion of Blood Type to DNA ** | \$40 | N/A |
| DNA Filing SHS / CSHA Registered Horses | \$25 | \$50 |
| Transfer of Ownership | \$40 | \$80 |
| Transfer of Ownership within family | \$10 | |
| Bulk Registration Or Transfer (Submitted Together) | 10% Discount for 3 or More | |
| Prefix Registration | \$50 | N/A |
| Lease (each time ASHA processes) | \$40 | \$80 |
| Duplicate (replacement) papers | \$40 | \$40 |
| 5-generation pedigrees | \$10 w/ reg.; \$20 separately | |

* Includes DNA kit for horse being registered

** Conversion available to non-members in conjunction with SSHR registration (\$40)

In this issue:

Page 2: Board Member Contact/ Fee Schedule

Page 3: The Editor's Note

Page 4: Advertising Rates/ Secretary Note

Page 5: President's Message/ Meeting Schedule/ Mission Statement

Page 7: Biosecurity for the Traveling Show Horse

Page 8: Nomination Guidelines

Page 9: News from Canada

Page 11: Marketing Committee Report & Action Points

Page 12: Guest Opinion What is a Shire? Arlin Waring

Page 13: Tax Treatment of Casualty Losses

Page 14 & 15: Regional and National Advertising

Page 16 & 17: 2013 All North American Results

Page 17 & 18: Exercising Horses for Weight Loss

Page 19: Registrations

Page 20: Transfers

Page 21: Guest Opinion: Riding Shires Clark Jensen

Page 22: Guest Opinion: Riding the Shire

Page 23: As I See It: Education Day

The official publication of the American Shire Horse Association, edited by Leanne Hoagland Glendive, MT. Mailed first class. Published quarterly. It is free to all voting members of ASHA. The publisher (ASHA) and editor reserve the right to refuse and/or edit all material submitted for publication.

Editor and publisher expressly limit any liability resulting from any and all misprints and/ or inaccuracies whatsoever in advertisements or content published in the publication and said liability is hereby limited to the running of a corrected advertisement or article correction notice. Advertisers are solely responsible for the accuracy of their assertions or claims. Material may not be reproduced without the permission of the editor or permission of person who owns the copyright.

On the cover:

Richard Cameron is plowing with his gray Shires at a field day in Colfax Washington.

The Editor's Note:

Hello Members:

It is with great pleasure, that I give you the first stages of a new look to your publication! The marketing committee, as well as the board of directors, are working hard to bring a new face to the Shire and ASHA.

Over the next four issues of the Bulletin we will be changing and moving things around. The new web site will be easier to navigate with the new addition of our own stud book— and online payments.

This issue is a great new change in the future of the Shire for me as editor. In order to help with the quality of the publication we have introduced a proofing committee. We have added footers for consistent page numbers.

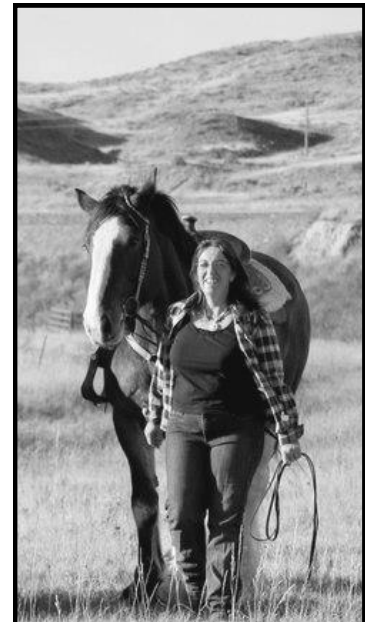
As we make these changes please come to one of the board members for your comments and concerns. We want to hear from you and want to make your experience and the information top notch.

I would like to thank all the advertisers in this issue. Your support helps the Shire and this publication. Another thank you to all who submitted items to print. It is nice to hear from you!

Keep watching for great new things.

Leanne

(406) 687-3004 bsshires@midrivers.com



A Message From Your President:

Welcome,

I hope the sunshine has found everyone, and thawed the ice from this long winter. Field work is a little behind this year, but the foals are growing just fine. They bring the smile of hope and excitement of a very full and busy year.

ASHA is full of new and exciting things this year as well. Step by step your board has made plans to keep you and your horse in the forefront of technology and opportunities. With a new website, facebook and email updates from our secretary, we want you to have the information you need and when you want it. ASHA has events happening all year long and across the country. Come join in the fun and joy of gathering together with Shire minded folks.

This past February was our annual Education Day, Members Meeting and Board of Directors Meeting. Held in Columbus, Ohio, we had a great time at The Ohio State University Veterinary College for Education Day. All the presenters brought us insight to draft horse management, to improve the care of our horses. A special thank you to those that came to this event. To the members that came to our annual meeting, I thank you for your support and input to this organization. It is your support of this group and this breed that makes it all worthwhile. This year the board worked long and hard before the meeting to be sure to get as much completed as possible. The time this group of directors gives is amazing. Thank you for your dedication to this breed and this membership. You are doing a great job.

Well, with field days and show season just around the corner, I am looking forward to meeting new and old friends once again. Hope to see you soon!

Your President,

D. Todd Riedel

Todd Riedel

President, American Shire Horse Association
traillightfarms@aol.com



Secretary's Report —

From the Book of Numbers for 1st quarter 2014:

Registrations – 14 (9 mares, 3 stallions, 2 geldings)

Transfers – 29 (14 mares, 13 stallions, 2 geldings)

Pending Registrations – 12 waiting for hair samples

2014 Membership – 300 (122 Life Members)

I don't really have a lot to say this quarter...mostly because I am REALLY busy! (But it is good for the office to be busy, right?) We had our very successful Annual Meeting and Education Day, which got rave reviews according to the evaluations we received (which I need to tabulate, yet). *Thank you to our members who had a hand in coordinating our meeting! We know that we can't do it without good help.* I assisted in facilitating the Marketing Group, which had a presentation ready for the Annual Meeting. I am also caught up with registry paperwork which got *slightly* delayed due to preparations before and after the meeting.

The biggest and most pressing news is that I was finally granted access to the new website, and spent a good share of this last weekend editing pages (maybe it's a good thing it is still ridiculously cold in Wisconsin this spring...or should I say *winter*, yet! I'm less likely to miss working with my ponies!). As of right now, there are 186 pages to our website. It is a BIG job! However, if you know me, I am absolutely anal about having a Positive Public Presence. So I want to make sure that pages are easy to navigate, every link works, and graphics are logical to add quality to the pages. Since some of the material was copied from other existing publications, it wouldn't surprise me if I miss a few of them. When the site is live, please feel free to highlight any errors you find and let me know so that we can make sure that we can maintain that Positive Public Presence!

Myrna Rhinehart



American Shire Horse Association

Profit and Loss
January - March, 2014

| | Total |
|-------------------------------------|--------------------|
| Income | |
| Bulletin/ Magazine | 980.00 |
| Education Day Proceeds | 1,875.00 |
| Interest Income | 5.92 |
| Membership Dues | 5,660.00 |
| Merchandise Sales | 140.00 |
| Raffle Sale Proceeds | 125.00 |
| Registry Income | 3,740.00 |
| Service/Fee Income | 35.00 |
| Uncategorized Income | 45.00 |
| Total Income | \$12,605.92 |
| Gross Profit | \$12,605.92 |
| Expenses | |
| Advertising | 733.75 |
| All-North American Contest Expenses | 147.84 |
| Bad Debts | 190.00 |
| Bank Charges | 115.64 |
| Board Expenses | 942.54 |
| Dues & Subscriptions | 200.00 |
| Education Day Cost | 1,822.72 |
| Insurance | 92.40 |
| Legal & Professional Fees | 610.00 |
| Mailings to members | 2,258.02 |
| Office Expenses & Supplies | 435.88 |
| Payroll Expenses | 3,484.13 |
| Postage | 196.15 |
| Promotional | 550.00 |
| Registry Expenses | 490.00 |
| Telephone Expense | 225.10 |
| Travel | 355.00 |
| Total Expenses | \$12,849.17 |
| Net Operating Income | \$ -243.25 |

ASHA Mission and Purpose Statements

Mission Statement

The Mission Statement of the American Shire Horse Association is to maintain the integrity of an accurate registry and promote the Shire breed through excellence.

(Developed at the 2002 Annual meetings)

Purposes: (summarized from the ASHA by laws and articles of incorporation)

- To form, conduct and operate a non-profit organization composed in whole or in part of persons, firms and/or corporations having interest in the breeding and improvement of Shire horses;
- To foster and preserve the traditions pertaining to the Shire horse;
- To encourage original investigations in determination and development of the best types of horses and the breeding to only purebred sires;
- To assist in procuring and making available for breeding suitable stallions and mares;
- To collect, revise, preserve and publish the history and pedigrees of purebred horses, particularly Shire stallions and mares, under such regulations as may be prescribed by said organization;
- To do all and every other act or thing necessary, suitable and/or proper for the accomplishment of all or any of the purposes or in the furtherance of any of the powers herein set forth and to do every other act or thing incidental to or appurtenant to or connected with said powers.

2014 Regular Quarterly Board Teleconference Schedule

First Quarter – January 21, 2014

Second Quarter - May

Third Quarter – August

Fourth Quarter – December

Tentative agendas will be emailed to the membership about one week before the meetings.

Additional BoD teleconferences may be scheduled if needed. Advance notice will be emailed to the membership if time permits.

Advertising Rates:

Support the Shire and Advertise at the Same Time!

We invite you to advertise with us each quarter. There will be two ad sizes available with the option of a text ad in the Breeder's Directory or in the classified section. We will require that all ads be sent in Jpeg or picture format and be camera ready. If you need design help contact one of the editors and we will get you in touch with someone who can help you. At this time all ads are black and white.

***** Your best deal is the Four Issues. You pay for three and get one free!**

****At this time we are not taking cover ads- if the Bulletin expands to that point we will put the inside of both the back and front covers up for purchase.**

*** Classified Ads must be submitted in writing and renewed each issue.**

Contact: Leanne Hoagland bsshires@middrivers.com
406-687-3004 (H)/ 406-939-1263(C)



| <u>Ad</u> | <u>One Issue</u> | <u>Four Issues</u> |
|--|--------------------------------|--------------------|
| 5 X 7 Inch Landscape | \$100 | \$300 |
| 3 3/4 X 5 Inch Portrait | \$75 | \$200 |
| Breeder's Directory Text Only <i>30 Characters per line including spaces. Six Lines of text total</i> | \$35 | \$105 |
| Text Only Classified Ad <i>30 Characters per line including spaces. Six Lines of text total</i> | \$10.00 Per Ad Per Issue | N/A |

| <u>Newsletter</u> | <u>Estimated Mail Date</u> | <u>Ad Copy Due</u> |
|-------------------|----------------------------|--------------------|
| Winter | January 15 | December 1 |
| Spring | April 15 | March 1 |
| Summer | July 15 | June 1 |
| Fall | October 15 | September 1 |

PROUD BREEDER OF TOP QUALITY SHIRE HORSES



Standing at Stud:

Manor Mac T (SHS/CSHA Reg) Pictured
Providence Flynn (SHS/CSHA Reg)
Windcharger Eli (CSHA Reg)



For Sale:

Horses for showing, breeding, riding/driving or just good Companion horses - all ages and prices

SHIRE HORSES

Windcharger

Heritage Farm Ltd.

DALE & MAXINE CAMPBELL

Dawson Creek, BC Canada

www.windchargerheritage.com or check us out on Facebook
Telephone: 250-719-7427

Biosecurity for the traveling show horse:

by Bonnie S. Barr, VMD, Dipl. ACVIM

Biosecurity is defined as all practices intended to prevent introduction and spread of infectious (contagious) diseases within a group of horses. The term "biosecurity" is often times used interchangeably with "infectious disease control." Thus, simply put, it means simple routines and conscientious practices which can guard your horse against a potentially fatal disease. Application of the concepts of biosecurity is important at every level of the horse industry. Probably the most documented guidelines are those used in equine veterinary hospitals, but the basic concepts can be modified to pertain to any venue that horses congregate from multiple sites.

Horse shows and events are prime places for a horse to catch an infectious disease. In recent years there have been reports of disease outbreaks at horse shows, thus simple measures to protect your horse could mean the difference between coming home with a blue ribbon or a sick horse. Contagious diseases significantly endanger the well-being of horses in addition to having potentially devastating financial and emotional effects. Horses that travel are exposed to conditions outside the normal including enclosed spaces, poor ventilation, fluctuations in ambient temperatures and co-mingling of a large number of horses from different areas, states or countries. In addition to abnormal conditions, horses that travel are stressed resulting in a decrease in immunity making them likely to develop clinical disease when exposed to common pathogens (germs).

There are simple steps deemed the ABCD's of biosecurity for the traveling show horse that will help to assure the health of your horse is not compromised. These steps involve proper health care, disinfection and an awareness of day-to-day hygiene. "A" stands for appropriate health care, which starts at home. This refers to establishing the best practices to maintain the general health of your horse and includes appropriate vaccinations, proper deworming, a suitable diet and proper exercise. The goal is to keep the immune system healthy. An appropriate vaccination schedule can be discussed with your veterinarian who will know of the possible contagious diseases in your area and the area you are traveling to.

"B" refers to the best form of transportation for the horse. The ideal means to transport your horse is in a properly cleaned and disinfected trailer, preferably your own. If commercial transportation is the only way you can ship your horse, research the company and ship only with a company that appropriately cleans and disinfects the trailer. If you can "smell horse" in the empty trailer then it has not been cleaned and disinfected properly. It is best not to ship with other horses of unknown health status. Good ventilation when shipping is important as is tying the horse loosely in the trailer. Research has shown that tying a horse's head up makes it more prone to respiratory disease because it is harder for the horse to clear the airways of debris and mucus.

"C" refers to cleanliness especially of the show grounds. Stalls should be thoroughly cleaned and disinfected between uses either by the event coordinator or by the participants. Prior to putting your horse into the stall, note if the stall has been cleaned. If there is old bedding or feed material in the stall, you know it has not been properly cleaned and disinfected. There are times when it is nearly impossible to appropriately clean and disinfect a stall because the material the stall is made out of is porous (i.e. wood) and the floor is dirt. In a perfect world the best cleaning methods to remove all bedding, scrub the walls and floor with a detergent, rinse, allow walls to dry, and then spray with a disinfectant. The literature has shown that physically scrubbing surfaces with soap and water followed by rinsing removes about 90-95% of bacteria

and viruses. Unfortunately this is not practical thus a modification is to remove all of the old bedding and feed material and spray the surfaces with a disinfectant. If there is a large amount of organic material (dirt, fecal matter) on the walls, removal with soap and water is recommended prior to applying the disinfectant. A garden pump sprayer makes a good way to carry and apply disinfectants (photo at right). In this scenario an appropriate disinfectant is one that is effective even in the presence of organic material such as a "phenol" compound. These disinfectants can be recognized by "-phenol" or



"-phenate" at the end of the chemical name on the label (examples include One-Stroke Environ® or Tek-trol®). Diluted bleach (8 ounces bleach to 1 gallon of water) is an inexpensive disinfectant but it works best on a surface that has been thoroughly cleaned.

"D" refers to day-to-day hygiene. This refers to many day to day activities at the show that put your horse at risk for exposure to germs. Closed or heated show grounds may be comfortable for you but usually result in poor ventilation and exposure of your horse to temperature fluctuations. Good ventilation and temperature control can help to reduce stress on the respiratory tract and circulation of germs/pathogens. Although it is impossible to restrict traffic around your horse, it is possible to limit direct contact to only essential people. Don't let unfamiliar people pet or handle your horse because they may have just been touching another horse that was sick. Alcohol based hand sanitizers or disinfectant wipes are an effective means to reduce the amount of germs on your hands. Do not loan or borrow equipment including buckets, towels, brushes and mucking equipment. If you need to borrow equipment appropriately disinfect it prior to using it on your horse. Avoid taking your horse to community water or grazing areas. Communal water hoses can be a source of contamination, thus bring your own hose. In general do not submerge the end of the hose into the bucket because the end could be a potential way to transmit germs from bucket to bucket. Monitor your horse's temperature several times a day. Be aware of other horses stalled near your horse. Listen for coughing and observe for nasal discharge because this may be a sign of an infectious disease. Don't let your horse touch other horses especially nose to nose because this is a common way to spread contagious organisms. Wearing rubber soled shoes allows for proper disinfection of your footwear. Consider keeping rubber slip-ons to wear only when around your horse thus preventing tracking of germs from the show grounds to your horse.

Biosecurity does not stop once you leave the show grounds. Before leaving the show grounds clean and disinfect tack, boots, equipment and grooming supplies. Once at home change your clothes and boots prior to handling resident horses. Isolate the returning horse from your resident horses for 14 days and monitor for clinical signs of an infectious disease. Appropriate biosecurity is important for the traveling show horse. As the saying goes, an ounce of prevention is worth a pound of cure.

PROCEDURAL GUIDELINES FOR NOMINATIONS AND ELECTIONS TO ASHA BOARD OF DIRECTORS

- I. The Nominating Committee shall be in place by the last day of March of the election year.
The Committee shall consist of two Board members and three members at large, all in good standing and eligible to vote as defined by the By-Laws.
Members of the Committee are NOT eligible to run as candidates.
- II. In the spring bulletin shall be printed:
The nominating process.
The name of the chair and committee members with their postal address, e-mail address and phone number(s).
- III. The final ballot shall be of sufficient number of candidates to fill the Board positions to be elected plus as least one.
Only members in good standing and eligible to serve as defined by the By-Laws are eligible to run.
The Nominating Committee may solicit volunteers to become candidates for the Board. Members wishing to run must contact a committee member **IN WRITING** by USPS or by e-mail **by July 21**.
By August 1, all candidates will receive a short form requesting the following information:
Name, address, phone number, and e-mail address.
A statement of ability and commitment to attend membership and board meetings and do committee work should they be elected.
A brief statement of strengths and contributions candidates can bring to the board (200 words max)
Brief responses to a set of questions posed by the committee and regular members.
The forms shall be completed and returned to the Chair postmarked no later than August 20. Forms postmarked after August 20 will not be considered.
1. The Chair shall forward copies of the completed forms to all committee members by August 30.
All completed forms will be sent to the Secretary with the final slate.
The Committee will confirm eligibility, review the written responses of all candidates and determine the final slate of candidates.
The Chair will then notify all committee members, board members, and the ASHA Secretary of the final slate by September 10.
The final slate shall be printed in the fall bulletin with the candidates' names, postal and email addresses, phone number(s) and personal response forms.
There shall be no maximum number of candidates.
- IV. The ballot shall be sent to all eligible voting members, as defined by the By-Laws, by first class mail no later than October 31. No ASHA correspondence unrelated to the election shall be included in this mailing.
The candidates shall be listed alphabetically, by last name, on the ballot.
Each ballot shall include a return envelope with the selected Notary Public's name and address as addressee and return address.
The envelopes shall also be clearly marked **BALLOT ONLY - Do Not include any other ASHA correspondence**.
- V. The mailed notice will also include the number of candidates to be elected, the deadline for return of ballots and the date, location and time the count is to take place.
A. Any ballots postmarked after the deadline date will not be counted.
B. One week after the deadline stated in the notice, the notary shall present all ballots, unopened, to the ASHA Secretary and any other election clerks or assistants to verify all are sealed. Following this verification, the Notary will open all envelopes in private and verify voter eligibility from the list of eligible members provided by the ASHA Secretary. The Notary will then remove the member information from the ballot, placing the ballots in one container and the member information in another container.
C. When verification is complete, the ASHA Secretary and any assistants shall tabulate all valid ballots in the presence of the Notary.
D. In the event a situation arises where the ASHA Secretary is unable to take part in the counting of the ballots, the President may appoint a person or committee to do so, as defined by the By-Laws.
E. Upon finishing and verifying the outcome, the Secretary shall immediately notify the Nominating Committee Chair and the President of the results.
The Chair shall notify the Committee, the candidates, and the board members of the results as soon as possible.
The results must not be released to anyone else until December 21 or until all of the above have been notified, which ever comes first.
In the case of a tie, the Chair will contact the candidates involved. If one wishes to withdraw, the other shall be the new board member. If both wish to continue, their names shall be placed in a container and a Notary Public shall draw the name of the winner.
The new board members shall be announced in the winter newsletter.

Adopted March 15, 2006, Committee Modifications: March 28, 2008, June 27, 2010, March 14, 2012

News From Canada

March 6, 2014

Well, I would love to be able to say “Spring has Sprung” – but not in our area of Canada!!

It has been a long winter but with Foals due in the next few days – I know spring is on its way. The days are getting longer, Foals are coming, Show Season is around the corner - 2014 will be a busy year.

The CSHA website was launched in 2013 and the feedback has been favorable. Please visit the site at www.canadianshirehorse.com. Our goal was to build a website that is easier to maintain and to provide a better experience for the users of the site. We hope we have achieved that aim. We have revamped our Forms and Procedures page on the site. I hope you will find the instructions clear and easy to follow. The turnaround time for Registrations, Memberships, Transfers, etc has been cut significantly – dependent of course on “snail mail”. I would appreciate any feedback you can give me and welcome your comments or suggestions.

The 2014 Calgary Stampede Heavy Horse Show will host the 30th Annual National Shire Show of Canada on July 4-7. We would like to extend an invitation to ASHA members to participate in this milestone event.

I look forward to working with ASHA and the SHS to promote the growth of our Associations and preservation of the Shire – those “Gentle Giants” that we all love.

Maxine Campbell
CSHA Secretary



Canadian Shire Horse Association
Maxine Campbell - Secretary
Box 387
Dawson Creek, B. C.
V1G 4H3
cshasec@pris.ca

ASHA YOUTH ACHIEVEMENT PROGRAM

- ☆ Meet new people
- ☆ Work with Shires & Sporthorses
- ☆ Receive recognition for your hard work
- ☆ Scholarship available

To join fill out a membership form found on ASHA's website or call 888-302-6643. Membership is \$15/yr \$35/yr foreign [Applicants must be 18 years of age or younger at the time of application]

Contact:

Danelle Kinney
haugenhill@hotmail.com
651-380-9600



BREEDERS LISTINGS:

-Looking for a Shire-
Contact one of our Breeders

Midnight Star Breeders

Brit and Sharon McLin
P.O. Box 957 Silt, CO 81652
(970) 876-5979
msbshire@sopris.net
Breeding Quality Shires Since 1978

Tally Ho Shires

Kim, Shad and Alex Murchison
John and Nila Parrington
0185 CR 225 Rifle, CO 81650
970-625-1142 970-618-3223
Raising outstanding, black Shires for over 40 years.
www.tallyhoshires.com

**Your AD Here?
Contact the Editor**

Big Sky Shires

Brett, Leanne & Connley Hoagland
Glendive MT 59330 ~ 406-687-3004
www.bigskyshires.com
bsshires@midrivers.com
Mind, Movement, & Conformation

**Your AD Here?
Contact the Editor**

Haugen-Hill Shires

Danelle Kinney
Red Wing, Minnesota
651-380-9600
www.freewebs.com/haugenhill
Breeding Champions in the Midwest

Illusion Farm Shires

Proudly producing excellent quality Blacks and Bays



Daniel & Kathleen Hathaway
(207)890-2211
174 Cornshop Road Fryeburg,
ME Illusionfarm.com



Picture right:
Illusion Farms Prim & Proper
2012 Shire Filly
Ruskington Danny x Gladwin
Jubilee Kate
We expect great things from this
filly. She is correct, has great bone,
and has real eye appeal.

Illusion Farm is currently standing
Ruskington Danny. We are extremely
pleased to have the opportunity to own
this multi-champion stallion. He possesses
all the qualities needed in the modern
Shire horse. His get are proving their
correctness and quality in the show ring.

Also standing at stud
2010 All American; Multi-Ch.
Black Shire stallion
**Illusion Farms Remember the
Titan**



Heart Mt. Misty Moon
"Mooney"
2006 Shire Mare
Ruskington Danny x
Shirley's Misty
This mare is a perfect
example of what "Rusty"
is producing. Mooney is
bred to our home bred
stallion Illusion Farms
Remember the titan for a
2014 foal.

DRAFT Motion Summary: Moved/seconded, MC = Motion carried unanimously, unless otherwise indicated.

Sharon/Karla – at the 2014 annual board meeting, electronic means of communication to the board will not be accepted as attendance. Any questions will be called to non-attending board members. MC

Sharon/Karla – to appoint Myrna Rhinehart as secretary & assistant treasurer for the 2014 – 2015 year. MC

Danelle/Kim – to register Fox Valley Flirt as an ASHA 'A' mare. MC, Gene abstained.

Kim/Karla – starting in 2015, ASHA will require photographs in lieu of sketches to register horses. MC

Kim/Danelle – to update the [ASHA] logo. MC

Gene/ Kim – to use the head of Honest Tom as part of the logo. MC

Karla/Danelle – to remove judge's list from show guidelines. Show Committee to revise list. 5 for, 1 against, 1 abstain. Motion passed.

Sharon/Kim – that Danelle Kinney be re-appointed to the ASHEF board. MC

Sharon/Kim – in section XII.c of the Registration Rules, we drop the words “or Shire Sport Horse Registry”. MC

Kim/Danelle – that ASHA work with Craig H. to get our Heavy Horse database online and free to members with subscription fees for non-members. MC [online studbook]

Karla/Kim – we make a funding request to ASHEF for the \$600 set up charge for HHO. [Heavy Horse Online program]. MC

Sharon/Karla – the board accept the recommended changes [to the stipend regulations], with the addition of 'with photo release forms' [under regulation 8 - report on events]. MC

Gene/Sharon – the editor may return any article that does not meet standards required. List of standards to be included in each bulletin. Motion withdrawn.

Sharon/Jim – the board agrees that the editor has the authority to edit or reject submissions for content or length. MC

Gene/Sharon – that the board thank our bulletin editor and agree to stand behind her. MC

Karla/Kim – to approve the 2014 proposed budget, as modified, with recognition of the likelihood of using reserve funds for technology upgrades. MC

Sharon/Danelle – to excuse Leanne's absence from the annual meeting [health reasons]. MC

Karla/ - due to his work situation, Travis be excused from this meeting – motion died for lack of a second.

Kim/Sharon – we provide ShireStudBook.com with [ASHA] electronic studbook information annually and we not have a link on the [ASHA] website [to ShireStudBook.com]. MC, Karla abstained.

Gene moved to adjourn the meeting – [no second needed for adjournment].

Draft minutes for the board and members meetings will be available on line in the near future. The secretary will send out an electronic notice when they are available.

Long-Range Planning for ASHA

The ASHA Board of Directors, working through a marketing committee established last fall, has developed several ideas to modernize the Association. The impetus for this work came from several directions: board officers heard a compelling presentation on keeping associations relevant during last spring's NPLC meeting; there has been discussion for a few years about how to market the Shire and the Association; and the timing seemed right given the other changes of the last few years.

The bulletin you are reading is part of the changes we are incorporating, and we expect to make other changes soon. The guiding principles of these changes were set out in the marketing plan presented at the annual meeting. This plan will evolve over time, and we welcome member input as we move forward.

Excerpts from the Marketing Plan - presented at the 2014 Annual Meeting

Target market:

We need to market to a younger generation to ensure the longevity of the organization, while not forgetting about the older generation which currently supports the organization.

Immediate Strategies

Build on current strengths/assets. Address weaknesses later or in conjunction, but focus on strengths.

Complete New Website, including:

- E-Commerce payments
- Fillable Forms – possible optional electronic submissions
- Heavy Horse Online – member benefit and technology upgrade

Bulletin Upgrades, including:

- Adding more “wow factor”
- Reducing “reports”
 - Meeting highlights instead of full minutes
 - Adding links to website for show results instead of printing full results
- Locking in number of pages (unless advertising pays for more pages)

Logo Updating

- Update font for less “scrolling” while maintaining “look”
- Add color
- Update rest of logo to more crisp, less scrolling, current design that attracts younger people, gives impression of modern, vibrant organization

Build Focus on Breed Awareness in our current activities:

- Bulletin/E-News
- Facebook/Website
- Paper Brochures

Long-Term Strategies – 1-3 years

Website, add extremely well done:

- Educational articles/videos
- Promotional videos

Bulletin

- Develop format into more of a “magazine” instead of a newsletter – just format, not necessarily more costly glossy

Continue to Build Focus on Breed Awareness

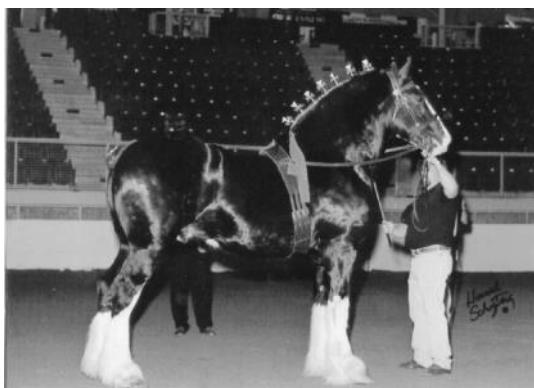
- YouTube
- Media (Magazines, TV, etc.)

Continue to look at additional ways to market ASHA and the Shire horse
Need more surveys and data to continue to determine future direction.

Guest Opinion What Is a Shire?

by Arlin Wareing

Up to this point much of what I have discussed involves identification and preference in the appearance of the breed: in other words, how the horse looks, which doesn't determine how the horse performs. We have talked about color, size, type, and other points in the Standard. These all relate to the recognized appearance of the animal. From this point on we will deal with the function of the horse. It is important to understand function; it is either right or wrong and not a condition that calls for personal preferences by any of us. In the last issue we talked about function as it relates to type. We must however go one step further and look at horses from the standpoint of individual parts. This is what show judges and breeders look for. We may see a stallion that many think looks great. However the judge and knowledgeable breeders may see a functional fault such as bad hocks and place the animal at the bottom of the class, or refuse to breed mares to him. In the case of a breeder the horse may not show the fault, but a careful study of his offspring may show a definite fault pattern, or the previous generation. We need to know what to look for and why. There is more to being a breeder than simply leading your mare down the street to the nearest stallion.



The ASHA breed standard reads: "Head, long and lean, neither too large nor too small, with long neck in proportion to the body. Large jawbone should be avoided." The Shire Horse Society standard reads the same. I can visualize "long and lean" as I'm sure you can. Frankly "neither too large nor too small" doesn't tell me much, and this is covered a little better further on. As a personal observation, I believe the average Shire has a smaller head than the other draft breeds on a horse of equal size. I find this to be the easiest way to tell Shires from the Clydes. The neck is also covered later; however the large jawbone is

not. This is a very direct statement, so it is presumably important. The truth is I don't know why. Maybe some of you can give us more information. Please do so if you know. I have asked some good horsemen and vets but didn't get a clear reason. Some think it relates to the way the neck and head are connected, which may be compromised by a heavy jaw. Others thought it dealt with the horse's sight. Horses do have a great field of sight, nearly 360 degrees, with only a small area directly behind them that is unseen. Some thought that a large jaw may limit the view of the ground directly below them, which could affect where to place the front feet.

I got a call a few weeks back from a woman who stated that breeders in her area would not use her stallion because he didn't have a Roman nose. I was surprised at this. If she had said they wouldn't use him because he did have a Roman nose I wouldn't have been surprised. I hear more people who don't like it than those who do. We'll look into that in the next issue.

TROYER CARRIAGE COMPANY



~Parts~

~Accessories~

~Craftsmanship~

*Proud Sponsor of
ASHA Cart Raffle*

Handcrafted in the USA

www.troyercarriage.com



TROYER CARRIAGE COMPANY, INC.

280-A North Village Dr., Shipshewana, In 46565

(260) 768-7135 Fax: (260) 768-7137

Tax Treatment of Casualty Losses

By John Alan Cohan, Attorney at Law

2014 ASHA Board of Directors Election

The Nominating Committee is looking for candidates for four board positions that will be vacated December 31, 2014. A Board member is elected to a four-year term and accepts the responsibility of participating in key decisions that affect the way ASHA functions. They are expected to attend one face-to-face meeting a year at their own expense, regardless of where in the U.S. it is held and be willing to take part in quarterly board teleconferences. Board members also serve on committees and volunteer for other duties as needed on behalf of ASHA. ASHA needs new people and fresh ideas to keep moving strongly into the future. If you love Shires, want to promote and preserve the breed and like working as a team with a diverse group of people, give serious consideration to volunteering your time and talents to the board for the good of the Shire breed and the membership.

Anyone interested in running is requested to notify one of the committee members listed below in writing or by email, by July 21, 2014 Complete nomination guidelines and election procedures are printed in this Issue of the Members' Bulletin and will be available on the new ASHA website www.shirehorse.org. A copy may also be obtained from any committee member. Feel free to contact any Nominating Committee member or board member if you have any questions about the position of director.

2014 Nominating Committee

Karla Stoner, Chair
8401 Peters Road
Frederick, MD 21704
Phone: (301) 874-3250
bloomforge@peoplepc.com

Gene McCaffrey
267 Sholtes Road
Schoharie, NY 12157
Phone: 518-872-1295
oxkill@capital.net

Charity O'Dell
1132 Suedberg Road
Pine Grove, PA 17963
Phone: 315-783-1759
charityodell@gmail.com

Burt Stanley
488 Hwy AD
Mountain Grove, MO 65711
Phone: 417-926-1170
showmeshires@wildblue.net

*5th position to be filled by March 31, 2014

Last fall a freak early snow storm killed thousands of livestock and horses in South Dakota. Ranchers suffered a tremendous monetary loss of prized livestock and horses. More recently in Kentucky, eight horses were killed in a fire, four of which were yearlings slated for the Keeneland September sale. Three of the four were uninsured.

The financial impact of casualties is significant in that it wipes out potential sales income, and sets back breeding, racing and showing efforts, not to mention the personal trauma of the tragedy.

Under Federal tax law, if you are engaged in a horse or livestock activity as a trade or business, a casualty loss is important to account for. Sometimes a major part of your breeding program can be interrupted by a casualty such as an aborted foal. When the IRS asks for an explanation of why there were several years of losses, sometimes the casualty issue needs to be clarified in detail. Sometimes if there are several casualties the IRS agent might get suspicious of insurance fraud, which requires further explanation. If there is no insurance, the amount claimed in the casualty might be substantial, and will require proof. In other cases, the IRS agent might need to be educated as to the economics of your venture and why the loss of an aborted foal, for example, can really throw a monkey wrench into your profit plans.

Another kind of setback involves illness of owners, resulting in loss of time expended in the activity due to medical treatment and recuperation. While this does not result in a casualty loss as does the death of an animal, nonetheless it impacts one's ability to carry forward business plans, and needs to be explained to the IRS if there is a history of losses.

Under the Tax Code, a casualty loss deduction is available when property is damaged, destroyed or lost due to a sudden, unexpected, or unusual event. IRS Form 4684 ("Casualties and Thefts") is submitted along with other tax forms. A sudden event is one that is swift, not gradual, such as a sudden storm, a racehorse casualty, a fire, flood, highway accident, or other misfortune.

A loss of horses or livestock in a casualty is allowed only if the animals are part of a horse or ranching business. Livestock bought for resale are deductible, for example, but casualties affecting hobby horses are not.

The amount of the casualty loss depends mainly on the cost basis of the animals in question. To compute a loss, the IRS will look to your adjusted basis in the animals minus any insurance or other reimbursement you receive or expect to receive. Generally, if a single casualty involves multiple animals, you must compute your loss separately for each animal, and then combine the losses to determine your total loss for tax purposes.

If you receive insurance proceeds for the loss, but incurred legal expenses to collect that insurance, the legal costs are deducted from the amount of insurance reimbursement in calculating the amount to report.

Losses of horses or livestock from disease are considered involuntary conversions. This is the case if you need to sell more than the usual number of livestock because of drought. The sale of animals above the normal volume is treated as an involuntary conversion. Involuntary conversions are reported on Form 4797 along with sales and exchanges of horses or livestock.

There are complications and grey areas in determining the scope of a casualty loss or involuntary conversion, and therefore you should seek the advice of your tax professional regarding the application of these rules to insure accurate reporting on your tax return.

[John Alan Cohan is a lawyer who has served the horse, farming and ranching industries since 1981. He can be reached at: johnalancohan@aol.com

ASHA NATIONAL SHIRE SHOW

IowaStateFair

AUG. 10-12
2014
DES MOINES, IOWA

NATIONAL SHOW INFO:



July 1 - Entries Due

August 10 - Shires Arrive

*12:30 P.M. Member & Exhibitor Luncheon (RSVP)
6 P.M. Hitch/Cart Classes*

August 11

*11 A.M. Halter Classes
6 P.M. Hitch/Cart Classes*

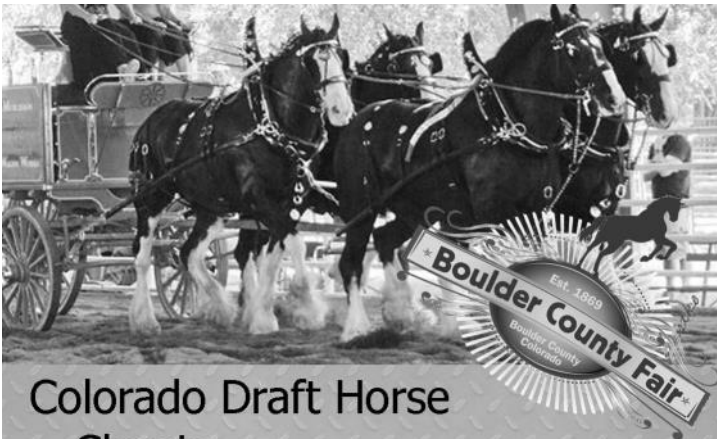
August 12

8 A.M. & 6:00 P.M. Hitch/Cart Classes

Hotel reservation has been set up under American Shire Horse Association. Holiday Inn - 515.283.0151

Judge for the show is Zephryn LaRiviere

For more information go to www.shirehorse.org



Colorado Draft Horse Classic

© Boulder Co. Fair

2014 ASHA MNT Regional
July 31 to August 1, 2014

Two Shows One Weekend
Option to show at Loveland on Saturday

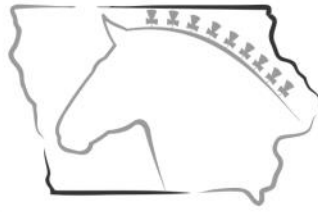
Boulder County Fair Office:
9595 Nelson Rd. Suite 200
Longmont, CO 80501.
Phone: 720.864.6460
Email: info@bouldercountyfair.org

Join Us for a Stomping Good Time

Classes

Shire Only Halter
Shire Only Hitch*
Youth
Amateur Hitch
Farm & Obstacle
Open Hitch*
Riding
* Cart to Six





2014 ASHA NATIONAL SHIRE SHOW SPONSORSHIP FORM

Platinum:
\$500

Full page recognition in show program
Advertising on Facebook page and link to Sponsor's page
Choice of class sponsorship(s)
Sponsorship recognition at show
Recognition to ASHA membership
2014 ASHA National Shire Show Commemorative Pin
2014 ASHA National Shire Show Commemorative Shirts, two

Gold:
\$250

½ page recognition in show program
Advertising on Facebook page and link to Sponsor's page
Sponsorship recognition at show
Recognition to ASHA membership
2014 ASHA National Shire Show Commemorative Pin
2014 ASHA National Shire Show Commemorative Shirts, two

Silver:
\$100

¼ page recognition in show program
Advertising on Facebook page and link to Sponsor's page
Sponsorship recognition at show
Recognition to ASHA membership
2014 ASHA National Shire Show Commemorative Pin
2014 ASHA National Shire Show Commemorative Shirt, one

Bronze:
\$50

Logo recognition in show program
Named on Facebook page
Recognition to ASHA membership
2014 ASHA National Shire Show Commemorative Pin
2014 ASHA National Shire Show Commemorative Shirt, one

Friend
of the
show:
\$25

Named in show program
Named on Facebook page
Recognition to ASHA membership
2014 ASHA National Shire Show Commemorative Pin

Sponsorship deadline June 1, 2014

Sponsor Contact Information:

Name (as it will appear in advertisement): _____
Street _____ City _____ State _____ Zip _____
Telephone _____ Email _____

Sponsorship Level:

Platinum: \$500 Gold: \$250 Silver: \$100 Bronze: \$50 Friend of the show: \$25

Sponsorship Signature _____ Date _____

Please make checks payable to ASHA or a credit card can be used by calling the ASHA office at 888-302-6643.

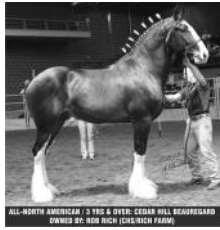
Send to: Myrna Rhinehart, ASHA Secretary, P.O. Box 408, Lake Delton, WI 53940

Please email your logo to: highhorsesdesign@yahoo.com

2013

All North American Shire Contest Results

Stallions – 3 Yrs & Over



RES. ALL-NORTH AMERICAN / 3 YRS & OVER: CEDAR HILL BEAUREGARD
OWNED BY: ROB RICH (CHLICKER FARM)

All-North American: Cedar Hill Beauregard, Rob Rich, Baraboo, WI



RES. ALL-NORTH AMERICAN / STALLION 3 & OVER: PROVI-DENCE FLYNN
OWNED BY DALE & MAXINE CAMPBELL (WINDCHARGER HERITAGE FARM)

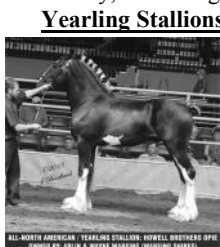
Res. All-North American: Providence Flynn, Dale & Maxine Campbell, Dawson Creek, BC
3rd: Deighton Samuel, Danelle Kinney, Red Wing, MN
4th: Ruskington Danny, Daniel & Kathleen Hathaway, Fryeburg, ME
5th: Ox Kill Jose Alerico, Eugene & Vicky McCaffrey, Schoharie, NY

Stallions - Two Year Old



RES. ALL-NORTH AMERICAN / 2 YEAR OLD STALLION: HAUGEN-HILL SUPREME ROYALTY
OWNED BY DANIELLE KINNEY (HAUGEN-HILL SUPREME)

All-North American: Haugen-Hill Supreme Royalty, Danelle Kinney, Red Wing, MN



RES. ALL-NORTH AMERICAN / YEARLING STALLION: HOWELL BROTHERS OPB
OWNED BY: ARLIN & WAYNE WAREING (BLACKFOOT SHIRES)

All-North American: Howell Brothers Opb, Arlin & Wayne Wareing, Blackfoot, ID

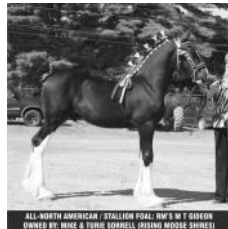
Yearling Stallions (Cont.)



RES. ALL-NORTH AMERICAN / YEARLING STALLION: NORTHEAST INTREPID
OWNED BY MELISSA ALEXANDER (NORTHEAST FARM)

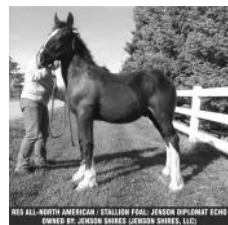
Res. All-North American: Northeast Intrepid, Melissa Alexander, Brookville, OH
1st Honorable Mention: Windcharger SJS Eli, Dale & Maxine Campbell, Dawson Creek, BC
4th: Midnight Star's Tally Horatio, Brit C. & Sharon McLin, New Castle, CO
5th: Jenson Defender Brave, Jenson Shires, LLC., Blair, NE
6th: Big Sky Tuff's Ranger, Brett & Leanne Hoagland, Glendive, MT
7th: Echo Valley Woodrow, Nancy P. & Bradley N. Fry, Steamboat Springs, CO

Stallion Foals



RES. ALL-NORTH AMERICAN / STALLION FOAL: RM'S M T GIDEON
OWNED BY: TURIE & MICHAEL SORRELL (CONCORD SHIRES)

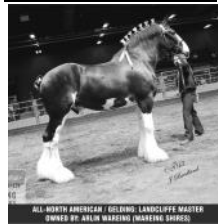
All-North American: RM's M T Gideon, Turie & Michael Sorrell, Concord, VT



RES. ALL-NORTH AMERICAN / STALLION FOAL: JENSON DIPLOMAT ECHO
OWNED BY: JENSON SHIRES (JENSON SHIRES, LLC)

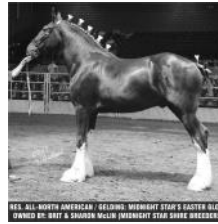
Res. All-North American: Jenson Diplomat Echo, Jenson Shires, LLC, Blair, NE
3rd: Windcharger Captain, Dale & Maxine Campbell, Dawson Creek, BC
4th: Tally Ho BK's Brighton, Shad & Kim Murchison, Rifle, CO

Geldings, Any Age



RES. ALL-NORTH AMERICAN / GELDING: LANDCLIFFE MASTER
OWNED BY: ARLIN WAREING (BLACKFOOT SHIRES)

All-North American: Landcliffe Master, Arlin Wareing, Blackfoot, ID



RES. ALL-NORTH AMERICAN / GELDING: MIDNIGHT STAR'S EASTER GLORY
OWNED BY: BRIT C. & SHARON MCLIN (MIDNIGHT STAR SHIRE BREEDERS)

Res. All-North American: All

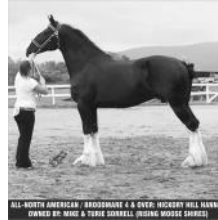
-North American: Midnight Star's Easter Glory, Brit C. & Sharon McLin, New Castle, CO

1st Honorable Mention: Pace Farm Pat, Wayne Wareing, Blackfoot, ID

4th: Tally Ho BK's Tristan, Kimberly N. Parrington-Murchison, Rifle, CO

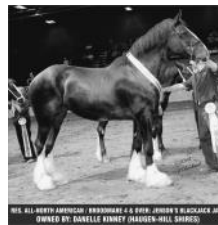
5th: RM's Moves Like Jagger, Turie & Michael Sorrell, Concord, VT

Broodmares – 4 & Over



RES. ALL-NORTH AMERICAN / BROODMARE 4 & OVER: HICKORY HILL HANNAH
OWNED BY: TURIE & MICHAEL SORRELL (CONCORD SHIRES)

All-North American: Hickory Hill Hannah, Turie & Michael Sorrell, Concord, VT



RES. ALL-NORTH AMERICAN / BROODMARE 4 & OVER: JENSON'S BLACKJACK JANE
OWNED BY: DANIELLE KINNEY (HAUGEN-HILL SUPREME)

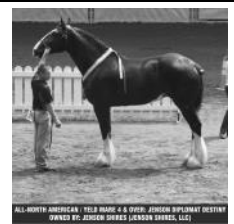
Res. All-North American: Jenson's Blackjack Jane, Danelle Kinney, Red Wing, MN

1st Honorable Mention: Starcastle Delight, Dale Campbell, Dawson Creek, BC

4th: Gladwin Jubilee Jada, Daniel & Kathleen Hathaway, Fryeburg, ME

5th: Skelton Sophie, Danelle Kinney, Red Wing, MN

Yeld Mares – 4 & Over



RES. ALL-NORTH AMERICAN / YELD MARE 4 & OVER: JENSON DIPLOMAT DESTINY
OWNED BY: JENSON SHIRES (JENSON SHIRES, LLC)

All-North American: Jenson's Diplomat Destiny, Jenson Shires, LLC, Blair, NE



RES. ALL-NORTH AMERICAN / YELD MARE 4 & OVER: BIG SKY ALL THAT JAZZ
OWNED BY: BRETT & LEANNE HOAGLAND (GLENDIVA)

Res. All-North American: Big Sky All That Jazz, Brett & Leanne Hoagland, Glendive, MT

3rd: Black Park Total Diva, James Alexander & Sandra Rutter, Bloomfield, ON

4th: Illusion Farms Miss Congeniality, Daniel & Kathleen Hathaway, Fryeburg, ME

5th: Gentle Giant Sheba, Dale & Maxine Campbell, Dawson Creek, BC

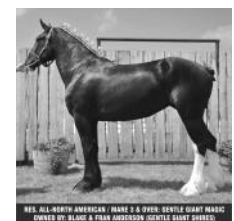
6th: Midnight Star's Dark Crystal, Brit C. & Sharon McLin, New Castle, CO

Mares – Three Year Old



RES. ALL-NORTH AMERICAN / MARE 3 & OVER: CROSSINGTONS EBONY
OWNED BY DALE & MAXINE CAMPBELL (WINDCHARGER HERITAGE FARM)

All-North American: Crossingtons Ebony, Dale Campbell, Progress, BC



RES. ALL-NORTH AMERICAN / MARE 3 & OVER: GENTLE GIANT MAGIC
OWNED BY: BLACK & FRAN ANDERSON (PINE GROVE SHIRES)

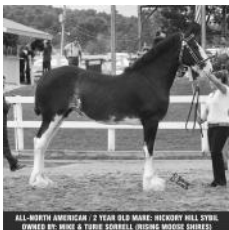
Res. All-North American: Gentle Giant Magic, Black & Fran Anderson, Didsbury, AB
3rd (Tie): RM's Holly Goes Lightly, Charity O'Dell, Pine Grove, PA

Mares – Three Year Old

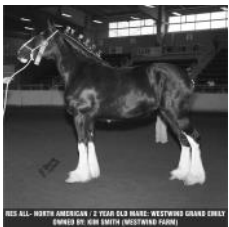
(Cont.)

- 3rd (Tie):** Black Park Exception Elle, Sandra Rutter, Bloomfield, ON
4th: Legacy's Jubilee Jessie, Daniel & Kathleen Hathaway, Fryeburg, ME

Mares – Two Year Old

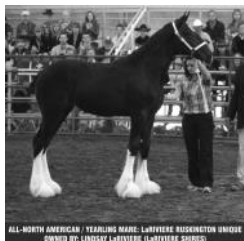


All-North American: Hickory Hill Sybil, Turie & Michael Sorrell, Concord, VT



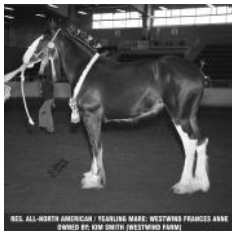
- Res. All-North American:** Westwind Grand Emily, Kim Smith, Burlington, ON
3rd: Legacy's Kassie, Dale & Maxine Campbell, Dawson Creek, BC
4th: Jenson's Diplomat Reba, Jenson Shires, LLC, Blair, NE
5th (Tie): Ox Kill Bonnie Gean, Eugene & Vicky McCaffrey, Schoharie, NY
5th (Tie): LaRiviere Johnny's Girl Maggie, Lindsay LaRiviere, Stony Plain, AB

Mares – Yearling



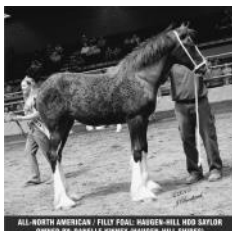
All-North American: LaRiviere Ruskington Unique, Lindsay LaRiviere, Stony Plain, AB

Mares – Yearling (Cont.)

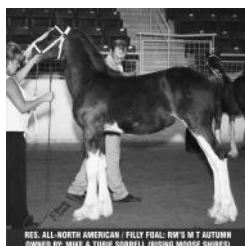


- Res. All-North American:** Westwind Frances Anne, Kim Smith, Burlington, ON
1st Honorable Mention: Illusion Farms Jubilee Cadence, Rob Rich, Baraboo, WI
2nd Honorable Mention: Jenson's Diplomat Sandy, Jenson Shires, LLC, Blair, NE
5th: Illusion Farms Prim & Proper, Daniel & Kathleen Hathaway, Fryeburg, ME
6th: Big Sky Tuff's HailLee, Brett & Leanne Hoagland, Glendive, MT
7th (Tie): Big Sky Tuff's April Fool, Brett & Leanne Hoagland, Glendive, MT
7th (Tie): Midnight Star's Hele-ne, Brit C. & Sharon McLin, New Castle, CO
8th: Tally Ho Duke's Jesse, Victoria Hauser, Pueblo, CO

Filly Foals



All-North American: Haugen-Hill HDD Saylor, Danelle Kinney, Red Wing, MN



Res. All-North American: RM's M T Autumn, Turie & Michael Sorrell, Concord, VT

Filly Foals (Cont.)

- 3rd:** RM's M T Jasmine, Turie & Michael Sorrell, Concord, VT
4th: Windcharger Diva, Dale Campbell, Dawson Creek, BC
5th: Haugen-Hill HDD Liberty, Danelle Kinney, Red Wing, MN
6th: Big Sky Sheza Tuff Wolf, Veronique Michaud & WM Rettman, Lacombe, AB
7th: Ox Kill Rhythm N Bleaus, Eugene & Vicky McCaffrey, Schoharie, NY



Exercising Horses for Weight Loss

By Shannon Pratt-Phillips, MSc, PhD

Exercise is particularly important for equine weight management. Often, owners want to see an increase in muscle development in addition to an overall decrease in fat coverage. There are many myths about feeding extra protein or various supplements to “build muscle,” but if it were that easy, every person would have a lean stomach with “abs of steel.”

To build muscle, a horse (or person) must exercise and stress the muscles such that they adapt and get bigger to accommodate the stress. One of the key principles of exercise training is “overload” in that muscle must be pushed beyond its normal limits to effect changes. This overload can come from increasing the frequency of the workouts, the duration of the workouts, or the intensity of the workouts. Mind you, there is often a fine line between not enough work and too much work. Your veterinarian can help you decide how much exercise is suitable for your horse.

A trick for increasing workload for your horse without overdoing things is to “cross-train.” Maybe do some hill work one day, some “sprints” another (10-second intervals at higher intensities, even at a trot if your usual ride is only at the walk), or even just a long hack through the woods. If you find you don't have the time for a full ride, try lunging your horse two times per day, rather than once. Remember, as with feeding, all changes, including an increase in exercise training, should be introduced slowly. If an owner doesn't have time to ride, another rider or trainer should be sought to help exercise the horse.

When working exercise into the overall equation of “calories in” vs. “calories out,” we need to estimate how many calories are being burned. In general, higher intensities of work (trotting, cantering, hill work) will burn more calories per minute, but these intensities may not be maintained for long periods of time. One way to estimate the intensity of a workout is to monitor the heart rate. Equine heart rate monitors are readily available and can be worn while riding; (Continued on top of page 18)

some models can store information and track progress. As work intensifies, heart rate will increase. It should be noted however, that as a horse becomes fitter, his heart becomes more efficient and may be lower at a given work intensity after training compared to before training. Research has found that when the heart rate is 60 beats per minute (as it is at a walk), 24 kcal are burned per minute. Therefore, walking your horse for 30 min will burn 0.7 Mcal. A heart rate of 90 beats per minute (approximately a light trot) will burn 56 kcal per minute; 120 beats per minute (fast trot or slow canter) will burn 99 kcal/minute; 150 beats per minute will burn 158 kcal/min; and 180 beats per minute will burn 230 kcal/min (*NRC Nutrient Requirements of Horses*, 2007). Using a heart rate monitor and adding up the calories can help you estimate your horse's caloric requirements more accurately and adjust the caloric intake as required (for weight gain, maintenance, or loss).

A common problem for the owners of obese horses is that many of these horses are also lazy. This makes it particularly difficult to give them a hard workout. Many owners, therefore, look to nutritional changes or supplements to increase the "spirit" level of their horse (remember to avoid using the term energy, as energy refers to calories). Unfortunately, there are no products available to increase the motivation for a horse to be more active during a ride. Some owners look to feeding sweet feeds or other starch and sugar feeds in an effort to get the sugar rush associated with it. But remember that these sugar rushes are followed by a crash, and the potential risks associated with high starch and sugar intake (colic, metabolic issues) decrease the value of these feeds. And logically, offering an obese person a chocolate bar is not an encouragement to get off the couch and onto a treadmill. The best way to counteract a lazy horse is to get it fitter, through regular exercise. As horses lose weight, they will be able put more effort into the exercise and less into just carrying around their excess weight.

Based on temperament and probably genetics, some horses are just lazier than others. This may make getting them to work difficult and also may make them prone to gain weight. Careful management and exercise training regimes will help these horses be the best athletes they can be.

Obviously there are going to be some horses that cannot exercise due to chronic lameness such as founder. However, these horses should still be able to walk (if not, euthanasia might be the only humane option). If they can walk, even hand walking (or walking with a rider on board) can help improve overall metabolism. These horses should also be housed in dry lots so they can get some free exercise (walking around the lot) but no additional feed from pasture.

Ayrshire Farm™

www.AyrshireFarm.com • Home of Fine English Shires • Upperville, VA



"Knutsford Edward"

SHS 46819 ASHA 22803-S CSHA 1791-S

Top Quality Shires for Sale Including Stallions & Brood Mares
Beautiful Carriages & Tack also Available for Purchase
Contact for More Information

Kim Cameron
Assistant Horse Manager
KCameron@AyrshireFarm.com

Crystal Ritenour
Large Livestock/Horse Manager
CRitenour@AyrshireFarm.com
(540) 592-7018 x 1015

Exciting News about Registrations and Transfers

For over fifty years, ASHA has printed its most recent registrations and transfers in each newsletter, whether those came out once or twice a year on purple dittos when the secretary had time, or more or less regularly each calendar quarter. This year we will instead provide members with online access to the entire ASHA database via our new website. You will be able to see family trees with as many as 10 or 11 generations, or all the ASHA-registered progeny of a given stallion in a single list, or the ownership history of each horse. The online studbook may not quite be functional at the time you receive this newsletter, but it should be working within a month if not sooner. We hope you enjoy using this new resource for ASHA members.

Quarterly Registrations: January 1 - March 1, 2014

Remember to check your documents upon receipt from the Secretary.

The information here is from the database at the office..

If there is an error here you need to contact the office and have it corrected.

ARBURY FARM GARI (147153) - 24762-M

Mare; Bay. Irregular blaze with jagged star, narrowing to snip, black spot on lower lip. Left foreleg no markings. Right foreleg no markings. Left hind leg half white pastern. Right hind leg half white pastern. Foaled May 14, 2000; Bred by KRISS ARBURY, Midland, MI Registered by ELIZABETH A. SCHNEBEL, Enon Valley, PA; Sire DEIGHTON COMMODORE (46182) 22540-S; Dam DEIGHTON CAROL (146139).

ORCHARD HILLS MISS MARY - 24759-M

Mare; Bay. Blaze with round star, wider near right eye, continuing to over part of left nostril, upper lip white. Left foreleg white stocking to knee in front, to above knee in back. Right foreleg white stocking to knee. Left hind leg white stocking to just below hock in back, to mid-gaskin in front. Right hind leg white stocking to just below hock in back, to lower gaskin in front. Foaled June 20, 2012; Bred and owned by NORMA EDITH JAMES, Galion, OH; Sire FORTHOFFER'S MASTER MAURUS 22792-S; Dam ORCHARD HILL'S LAUREN B 24357-M.

SHIRE HILL FARM ARIA - 24758-M

Mare; Black. Wide blaze with round star and point above left eye, continuing to widen to left face, to over both nostrils, upper and lower lips and chin white. Left foreleg white stocking to above knee, lower on inside, higher in back. Right foreleg white stocking to knee in front, to above knee in back, jagged on outside. Left hind leg white stocking to just below hock in back, to above hock in front. Right hind leg white stocking to below hock in back, to hock in front. Small belly spot. Foaled May 18, 2013; Bred and owned by KEN LETOURNEAU, Stillwater, MN; Sire PINE VALLEY FARMS JOHN 22873-S; Dam SHIRE HILL FANTASIA 23825-M.

TD ROZZIE RAPTOR - 24761-M

Mare; Black. Large round star narrowing into strip slightly to left, widening above nostrils to over both nostrils, upper and lower lips white. Left foreleg white stocking to below knee in front to above knee in back. Right foreleg white stocking to below knee. Left hind leg white sock to mid-cannon. Right hind leg white stocking to mid-hock, lower on inside. Foaled May 22, 2011; Bred and owned by VICKI SCHMIDT, Hebron, ME; Sire SASSY SUPREME PRINCE WILLIAM 22702-S; Dam SPARKLAND JEN (146299) 24137-M.

TD SADIE SOUNDER - 24760-M

Mare; Black. Irregular round star wider on right, narrowing to stripe in center, to snip over right nostril; lower lip white. Left foreleg white stocking to below knee. Right foreleg white stocking to below knee. Left hind leg white stocking to below hock in back, to mid-hock in front. Right hind leg white stocking to below hock in back, to mid-hock in front. Small white patch on right girth. Foaled April 6, 2011; Bred and owned by VICKI SCHMIDT, Hebron, ME; Sire SASSY SUPREME PRINCE WILLIAM 22702-S; Dam NEW ENGLAND CHABLIS 24466-M.

SWISS SHIRE MASTER (C2233) - 123460-S

Stallion; Gray. Irregular star with point at top to near left eye, narrowing to conjoined strip, to snip on right muzzle to near right nostril; lower lip white. Left foreleg white stocking to over knee, dip on outside. Right foreleg white stocking to over knee. Left hind leg white stocking to below hock. Right hind leg white stocking to below hock in back, to hock in front. Foaled June 3, 2010; Bred and owned by EUGENE K. & SANDRA K. CHRISTIANSON, Chetek, WI; Sire SWISS SHIRE PRINCE (46994); Dam SWISS SHIRE MOLLY (146762).

DANCES WITH ALLADIN - C-20279-G

Gelding; Black. Blaze wider above eyes with point over left eye, continuing to over right nostril and half of left nostril; upper and lower lips and chin white; both eyes blue. Left foreleg white stocking to below knee, higher in back. Right foreleg white stocking to below knee, higher in back. Left hind leg white stocking to hock in back, to mid-gaskin in front. Right hind leg white stocking to below hock in back, to hock in front with point on outside to hock. White spots left lower mid-barrel and near stifle, right near girth. Foaled March 3, 2002; Bred and owned by CARL L. HEITKAMP, Adrian, MN; Sire FOREST HILLS BLACK HAWK 22558-S; Dam HEITKAMP'S JANE (7/8 SHIRE) B-23185-M.

NEW ENGLAND CAESAR - 20280-G

Gelding; Black. Wide irregular blaze with irregular star, to near left eye, point above right eye, widens below right eye to over partial right cheek; both nostrils, muzzle, and lower lip white; left eye blue. Left foreleg white stocking to just above knee in front, to above knee in back. Right foreleg white stocking to just above knee in front, to mid-forearm in back. Left hind leg white stocking to just below hock in back, to gaskin in front. Right hind leg white stocking to mid-hock in back, to gaskin in front. Large white marking on right from girth to mid-barrel. Foaled April 15, 2008; Bred and owned by C/C MOULTON dba NEW ENGLAND SHIRE CENTRE, Ocala, FL; Sire NEW ENGLAND COMANCHE 20241-G; Dam NEW ENGLAND TIFFANY 24314-M

Quarterly Transfers –

1/1/14 – 3/1/14

Remember to check your documents for errors upon receipt from the Secretary.

24036-M - The Mare, ALAN'S GRAND DUCHESS (147117) from KIMBERLY N. PARRINGTON-MURCHISON, Rifle, CO transferred to CHRISTOPHER BRUNETTE, Littleton, CO 12/15/2013

23813-M - The Mare, BRIGHTENRIDGE SARA'S GROMIT from CARL L. and CHERYL HEITKAMP, Adrian, MN transferred to TERRY & TAMMY TICE, Coos Bay, OR 7/20/2013

24079-M - The Mare, DFF THUNDERHOOF MISTY from JENSON SHIRES LLC, Blair, NE transferred to AMANDA McCOY, Dry Prong, LA 12/1/2013

23793-M - The Mare, DOOR T ANGIE DEBO (146719) from JOYCE ENGASSER, Powhatan, VA transferred to ELIZABETH A. SCHNEBEL, Enon Valley, PA 6/15/2008

24387-M - The Mare, EDWARDS ROYAL BLUE OF VISTA RIDGE from HILLARY LaMANNA, Hockley, TX transferred to TAMARA ADAMS, Hockley, TX 12/7/2013

24356-M - The Mare, HMA ISABELLA from HEINZ and URSINA NAEF, Rolling Hills Estates, CA transferred to GAIL T. COLBERN, Ashland, OR 9/11/2013

24604-M - The Mare, HUSKA MILLENIUM'S GABRIELLA from HEINZ and URSINA NAEF, Rolling Hills Estates, CA transferred to GAIL T. COLBERN, Ashland, OR 9/11/2013

24307-M - The Mare, HUSKA MILLENIUM SHIRES PHANTOM JET from HEINZ and URSINA NAEF, Rolling Hills Estates, CA transferred to GAIL T. COLBERN, Ashland, OR 9/11/2013

24117-M - The Mare, LONG ACRE'S LADY JAN (148176) from KIMBERLY N. PARRINGTON-MURCHISON, Rifle, CO transferred to KIMBERLY J. DEACON, Sedalia, CO 1/19/2014

23979-M - The Mare, SUNDANCE STORM CHASER from TODD and SANDI SNYDER, Castle Rock, CO transferred to MARIE RAY, Watkins, CO 3/28/2010

23331-S - The Stallion, AXEHOLME WORDEN from JAMES and ANGELA STEWART, Richmond, MO transferred to JAMES JEFFREY VANNURDEN, Litchfield, MN 7/20/2013

C-20279-G - The Gelding, DANCES WITH ALLADIN from CARL L. HEITKAMP, Adrian, MN transferred to DANNA FINDLAY, Horton, MI 12/3/2013

23383-S - The Stallion, DUKE'S WILLIAM OF SHADY GROVE from KATIE APPLEHANS, Aurora, CO transferred to MARIE RAY, Watkins, CO 1/22/2014
** transferred to KATIE APPLEHANS, Aurora, CO 4/1/2012

22869-S - The Stallion, HUSKA MILLENIUM SHIRES CRESCENT MO from DANIEL A. HUBBELL, Traverse City, MI leased by RICHARD A. FORTHOFER, Portland, IN 2/1/2014

23423-S - The Stallion, JENSON DEFENDER BRAVE from JENSON SHIRES LLC, Blair, NE transferred to DIAMOND Z ENGLISH SHIRE FOUNDATION, Cedar City, UT 12/14/2013

23437-S - The Stallion, JENSON DIPLOMAT ECHO from JENSON SHIRES LLC, Blair, NE transferred to WAYNE C. KENT, Weidman, MI 12/15/2013

*
23439-S - The Stallion, JENSON DIPLOMAT IMPERIAL from JENSON SHIRES LLC, Blair, NE transferred to WAYNE C. KENT, Weidman, MI 12/15/2013

*
20280-G - The Gelding, NEW ENGLAND CAESAR from C/C MOULTON dba NEW ENGLAND SHIRE CENTRE, Ocala, FL transferred to MICHAEL and CATHY TRICKEL, Ocala, FL 1/10/2013

*
23309-S - The Stallion, OX KILL JOSE ALERICO from EUGENE and VICKY McCAFFREY, Schoharie, NY transferred to JENNIFER HOWSON-RADTKE, West Suffield, CT 12/20/2013

*
23460-S - The Stallion, SWISS SHIRE MASTER (C2233) from EUGENE K. & SANDRA K. CHRISTIANSON, Chetek, WI transferred to ELIZABETH A. SCHNEBEL, Enon Valley, PA 1/3/2012

*
23442-S - The Stallion, TALLY HO DUKE'S FINNEGAN from KIMBERLY N. PARRINGTON-MURCHISON, Rifle, CO transferred to NATHAN JOHNSON, Morgan, UT 1/14/2014

New Members:

January 1 to March 1, 2014



Melissa Alexander, Brookville, OH
Amy Cece, Columbus, NC
Gail Colbern, Ashland, OR
Kirsten Grace, Reedsburg, WI
Megan Irwin, Three Forks, MT
Wanda Johnston, Dayton, WY
Shantel C. Keiser, Glendive, MT
Karyn Lee, High River AB, CAN
Sherry Lewis, Cannington ON, CAN
Brenda Love, Boulder, CO
Kimberly Mead, Valley Center, CA
Jennifer Howson-Radtke, West Suffield, CT
Marie Ray, Watkins, CO
Devion Rehbein, Waupun, WI
Emily Russell, Great Falls, MT
Korine Shaffer, West Allis, WI
Terry Tice, Coos Bay, OR

Thank You for your trust and support in
the Shire horse.

Need More Information or Assistance?

Contact The Secretary

Office hours are 9am to 3pm CT
Tuesday, Wednesday, & Thursdays.

Myrna Rhinehart Secretary

American Shire Horse Association
P.O. Box 408 ~ Lake Delton, WI 53940

Phone: 888-302-6643

email: secretary@shirehorse.org

www.shirehorse.org

Planning for Future Annual Meetings

This year's membership and board meetings involved discussion about making our Education Day and meeting accessible to more of our members. ASHA's directors would appreciate your input on this issue.

As planned during last year's meeting, the 2015 annual meeting will be held in conjunction with the National Western Stock Show on January 22-25. We plan to hold a very brief membership meeting after halter classes on Thursday, followed by the annual board meeting. We will offer a package for NWSS performances on Friday through Sunday and plan to include a social event for ASHA members and guests.

Our Education Days over the last 15 or so years have included a wide variety of speakers and clinicians. We have had draft horse-oriented presenters like Sherry Lewis, Doc Neumann, Brian Coleman, Hank Junkans, and Sheila Grange, "general" trainers like Steve Bowers and Josh Lyons, and many speakers from the various vet schools where we've often held the meetings. If you have attended one or more Ed Days, have you found these presentations valuable? Do you have suggestions for topics or speakers we should include in the future?

One issue ASHA faces is that the bylaws call for an annual meeting to be held before the end of February. Some members find this a difficult time because of their breeding plans. Is there another time of year that is better (and doesn't have other conflicts, such as shows)?

We recognize that attending Education Day involves a travel (cost) commitment for all but a few members. We would welcome your ideas about how to make it more accessible to all. We are looking into providing video of presentations for members, and welcome other ideas.

Jim Edmiston is heading up this process, so please contact him or any other board member

Guest Opinion: Shires Under Saddle

The Shire horse started out as a riding mount and progressed to become a great harness horse. Now, so many people have discovered the fine attributes of the Shire as a riding horse. Riding the Shire has become a real factor in the desire to own one. In my experience, over 50% of the buyers of the horses I sell indicate that there will be a future saddle in this horse's life. The condemning of this special trait this breed enjoys is not in the Shire's best interest.

As Shire breeders and as a Shire organization, we need to know and remember our past so we can progress more clearly to the future. We have gone through a lot during the past few years with our organization and our breed and we need to remember some of these experiences so we do not allow the same mistakes to be repeated.

It is no different with our breeding practices in breeding and raising Shires. If we all had deep pockets, we could breed to our desired goals and shape the Shire horse to our specific ideals. In most cases, the breeder has to breed to a certain extent for what the customer wants so there will be a sale for their animals. If there is no sale or outlet for the animal, they will become extinct.

I remember not so many years ago when we visited many breeders in England that were raising the shorter, more blocky type of Shire. They felt that no one cared for them, as they could find no buyers, as the buyers were demanding the more modern type of horse. While they were sitting there with their ideal Shire and no buyers, they had difficulty seeing how they could continue to breed their favorite type of horse with no buyers coming to purchasing them. I am sure that even here in the US, you can find many breeders in the Percheron and Belgian breeds finding themselves in the same situation. What have the other breeds done about it? Well they have accepted change and are now breeding a much taller more modern horse than they did just a few years ago.

That does not mean that they abandon their belief in quality or breed standards. You can read most any thing into a set of standards that you want to. If you go back a few years ago, you will find we had an exceptional lady judge, (Tina Anderson) who taught judging at Colorado State, give a talk to our Annual Meeting Education Day. She pointed out very clearly that the basics of judging a horse are very similar whether you are looking at a Quarter Horse or a Shire. You look for skeletal conformation and angles of body structure. A good judge of horses can adapt these skills to all horses in their evaluation. After that, you can select for type and breed preferences etc.

I think we have seen all breeds take a rather sudden turn to the more modern type of horse. Those that are taller, more upright with a good length of neck and a leg. I do not believe we can condemn this move although in some cases it can be taken too far. I believe we can fit these desired Types into our breed standards and maintain the integrity of the breed. If we all were raising the older type of horse, we probably would not be here calling ourselves breeders, as we would be out of business. Unless you can fulfill the demand of the buyers, you will become extinct as a breeder. The best breeders will balance the demand of the breed along with the demand of the buying public. By doing this, we can continue to service the breed and the public and keep the breed active and moving forward in the view of the public.

We need to remember there is structural conformation and then there is type. I feel the skilled breeder has to unite the two to obtain the quality in the horse along with the type that the consumer demands. Failure to recognize these differences and cope with them will give the breeder a rear view mirror to look into.

The buying public will never recognize the great disposition of the Shire till they own one. It is our challenge to communicate this great asset to the buyer.

The disposition factor is the greatest selling point of this breed. However Type is of great importance to the new owner. They have an image in mind of what this horse should look like. They often compare this image they have to that of other breeds. The majority of the buyers demand the more modern type and that is what they will take their checkbook out of their pocket and pay for. Why would you buy a product you did not like and why as a breeder would you breed a product the buyers did not like?

Loose opinions that are spread, such as "the Shire will not hold up under the discipline of riding", have not been documented and are only rumors at this point. Loose unfounded opinions like this should not influence the direction of our breeding program.

Clark Jenson—Jenson Shires LLC (402) 426-3198 9110 P-35, Blair, NE
68008 ClarkJenson@huntel.net



Guest Opinion: Riding the Shire

There has been a submission to the Bulletin in the last few issues regarding how Shire conformation has changed in recent years, and some discussion regarding the use of the Shire for ridden disciplines. Several excellent points were made, and I certainly don't disagree with many of the issues that were discussed. I think it's vital to the health of the association to encourage members to support the breed with such strongly-felt convictions. Too often, small breed associations fall apart due to members' apathy – and it was refreshing to know how strongly the writer felt about the future of the Shire horse.

I am compelled however, to respond with some of my own personal observations as a Shire owner who holds an opposing viewpoint as it pertains to using the breed for riding disciplines.

In an ideal world, the factors of finances and mechanization would not affect the Shire horse, and they would continue to be bred as they have been for many years. But very few farms and individuals have the resources to maintain large strings of hitch horses, vehicles, and harness simply for the love of the breed. The sad truth is that the Shire's job – whether in the farm field, or pulling a brewer's dray through the city streets – was outsourced long ago due to modern mechanization. Finding him a new job where he can serve a purpose other than *what he was bred for* is therefore critical to the perpetuation of the breed.

I don't disagree with the statement that was made in the Winter bulletin that heavy work over jumps may contribute to unsoundness in a draft. But I must differ with that position as it pertains to Dressage. The meaning of the word 'dressage' is 'the art of riding and training a horse in a manner that develops obedience, flexibility, and balance'. I purchased our Shire stallion, Mufasa (Laurel's Powerful Paul x Wandamere Suki) – affectionately known to us as 'X' – as a weanling with the sole intent of training him under saddle for Dressage. I would like to make it clear that he has never been trained to drive – primarily because it is my belief that the muscular conditioning driving involves is not conducive to ridden Dressage *as it applies to draft horses*.

As X grew and matured, it became apparent that that whether it was luck or divine providence, his conformation and athletic ability was suited to the Dressage. From the very beginning of training, we have done everything possible to ensure his health and soundness, encourage his natural ability, and develop his musculature over the proper time frame – including altering his diet, consulting with his veterinarian, hiring experienced trainers, carefully considering hoof care and shoeing, and bringing him along slowly as would be appropriate given his breed and size.

In May of 2012 he made his official debut in the dressage ring at a USDF sanctioned show at Training Level as a five year old, and scored a 69.83% the same year. For those of you unfamiliar with Dressage, I can assure you that many owners of very fancy Warmbloods would be quite pleased with a 69% at Training Level in the five year-old year.

Later that year, we sought more intensive instruction with FEI-level Dressage trainer, Luis Reteguiz-Denizard, and last November we shipped X to Florida to spend the winter in full training. Lou is an extremely

talented rider and Pan Am Games veteran who has competed and worked with many of the 'big names' in the Dressage world. This has not been an inexpensive undertaking for our farm. When the cost of training with an FEI-level professional, boarding in Florida, and shipping is considered against the miserable state of the breeding market for Shire stallions, it is easy to understand that we did not make this decision with an eye to making a profit.

We made this decision because it was an unparalleled opportunity for a Shire horse with the ability to make a name for himself in Dressage, and thus gain more exposure to a different market. I recently asked Lou if he would contribute his thoughts for this piece, and here are his words:

'I have been asked to comment on my work with Shire stallion, Mufasa X. I have known X for three years now. I trained his owner Andrea Eppley in bi-monthly dressage clinics in Indiana. Then, this winter, Andrea decided to send him to me for training at my home base in Palm City, Florida. The purpose was to make him stronger in the self-carriage carrying capacity that dressage requires, in addition to furthering his knowledge of the movements in dressage. Without hesitation I must say he has been a pleasure to work with, and is learning his lessons well. For such a large horse of a cold blooded breed, he is light on his feet and graceful. I can comfortably say his work is at a second/third level capacity in trot and a first level capacity in canter. Soundness has never been an issue'.

X's routine with Lou is what you may expect from a professional program – a regimented schooling schedule, the best feed money can buy, personal attention from a professional groom daily – and much encouragement. As most Shire owners will concede, if this horse was not capable of this level of work, there is no trick or trainer on the earth that would be able to coax it out of him. X is not a Warmblood. Lou understands this. His training sessions are shorter of duration (due to the ratio of slow twitch –fast twitch muscles in the physiological makeup of the Shire versus a 'performance' horse) and his schedule follows a 'two days on – one day off for recovery' rotation. His farrier sets him in standard steel draft shoes with toe clips appropriate to his size – and appropriate to the discipline. We have never experienced soundness issues of any kind, and I am certain this horse is more fit than many of the drafts we have seen on hitch-es.

His appearance and musculature, however, is indeed not traditional for the Shire breed. His feathers have been shaved – as they are unnecessary for the work he is doing- and he carries a full tail. The muscular development of his mid-neck is far more defined than that of a traditional Shire, and his hindquarters are more narrow. His shoulders are markedly less bulky than that of a hitch horse. The 'action' of his trot has been flattened in the front – and activated behind; again creating a different impression. All of these details however, are created through training and grooming. The one thing that cannot be created is his mind – and in this aspect, he is in every way a traditional Shire horse. Willingness, gentleness and work ethic – it is impossible to artificially devise these attributes. As you may imagine, an eighteen hand draft stallion is a bit of an oddity in the south Florida Dressage community. In early December of last year Lou and I were talking during one of my trips down to visit. He said, 'I don't know how, but everyone in town found out he is here. And they all keep asking the same question when they hear that I have a Shire stallion in training: 'But, why?'. I'll tell you my answer: *because he can do it*.

The Shire may not have been bred for Dressage. However, if we want to continue to see the horses we love capture the eye of the public, and have clients willing to cross-breed to our stallions to perpetuate the elements of the quiet mind and powerful body the Shire is renowned for, and if we want to continue to find a modern solution to the lasting legacy of the Shire horse- we will find a new and versatile occupation for them in the coming years.

Mrs. Andréa Eppley
Silver Drache Farm, LLC
Westfield, Indiana
February 26, 2014

Ohio State Fair Draft Horse Show

Ohio Expo Center, Columbus, Ohio
July 28 - August 1, 2014

Over \$24,000 in premiums available to Shire exhibitors.

All-North American Qualifying Show

North American 6 Horse Hitch Show

Buckeye Battle of the Breeds Cart and Team classes

A wide range of Halter, Hitch, Riding and Youth classes available.

New this year: Farm Team Classes

- Team Feed Scurry

- Single & Team Obstacle Driving

- Gamblers Choice

Stall Rebate Available

Contact for more info

Entry Deadline: July 1st

Show Coordinators:

Todd & Emily Riedel

330-419-0346

TrailLightFarms@aol.com

Ohio State Fair & Expo Center

717 East 17th Ave., Columbus, OH 43211

614-644-4035

www.ohiostatefair.com



As I See It: Education Day

The ASHA Education Day and Annual Meeting was a great success. The three speakers were very informative. I especially liked the talk that Dr. Jeff Reiswig gave on equine dentistry, very informative. Our president, Todd, gave a very informative presentation on shoeing our Shires. The tour of the Ohio State veterinary hospital was also very informative, nice to know where to take your horse if you would need that service.

The Embassy Suites hotel was great. I understand that some of the guests thought it was a little pricey at \$129 per night, but when you consider the fabulous breakfast that you didn't have to buy at another restaurant, and the manager's reception with drinks and finger food in the evening, made to stay very reasonable.

I would like to thank the ASHA board for a very nice and informative weekend.

As I see it.

Richard Forthofer
Shire Power Farm
Portland, Indiana

Attention Mare Owners:

People are asking for Saul's foals.

WARHORSE POWERFUL SAUL

18.1H / 2200lb Dark Bay and 4 whites.

Amazing personality.

100% first time conception rate on
shipped/cooled semen so far!

\$650 LFG.



Dancing Horse Farm

Sharon Garren
Molalla Oregon
503-829-3326

zebu@molalla.net



dac[®]

"IT MAKES A WORLD OF DIFFERENCE"

Making a World of Difference
For Over 30 Years

Let Us Show You How

800-921-9121

www.feeddac.com

dac® Vitamins and Minerals

PO Box 2205, Dover, Ohio

dac® Mission Statement: To provide the finest livestock nutritional products at the most economical price we possibly can in order to enhance the performance of our customers livestock

THE AMERICAN SHIRE HORSE ASSOCIATION



Myrna Rhinehart Secretary

P.O. Box 408 ~ Lake Delton, WI 53940

Phone: 888-302-6643

email: secretary@shirehorse.org

www.shirehorse.org