

THE AMERICAN SHIRE HORSE ASSOCIATION



Established 1885

WINTER 2012/ 2013 BULLETIN

A Message From Your President:

Greetings,

Well, we have had quite a year behind us. Elections and holidays have come to pass, and plans for a new year runs through our minds. Building on the foundations that have been laid out before us, we continue to grow. Change is part of being alive and it is embraced by those that are willing to live for a future.

The annual meeting is just around the corner. I encourage all to attend that can. Our education days have been on the leading edge of the draft horse industry, and this year will be no exception. The members meeting is an opportunity for all to meet those you have before and start new friendships with others. I have personally found that the before and after hour get-togethers are some of the best, and have built relationships that will last a life time. With the new B.O.D. members stepping in, fresh idea's and new strengths will be brought to the table with much excitement. It is my hope that this membership will support the new Board of Director's by direct communication and active support. We are here to serve this great breed, everyone of us.

Through these challenging times, new ideas will be tried and some old ways will be embraced to meet this adventurous new equine world. As the new year unfolds, take part in the opportunities of fellowship with other Shire and draft horse enthusiasts. A.S.H.A. will be at several different events, stop in, we would love to visit.

Wishing you all the best in 2013!

Todd Riedel

President, American Shire Horse Association
traillightfarms@aol.com

Board of Directors

Todd Riedel ~ President

6168 Greenwich Rd., Seville, OH 44273
(330) 419-0346 traillightfarms@aol.com

Karla Stoner ~ Vice President

8401 Peters Rd., Frederick, MD 21704
(301) 874-3250 bloomforge@peoplepc.com

Kim Parrington- Murchison ~ Treasurer

0185 CR 225, Rifle, CO 81650
(970) 625-1142 thshire@sopris.net

Leanne Hoagland ~ Editor

PO Box 95, Glendive, MT 59330
(406) 687-3004 bsshires@midrivers.com

Dan Hubbell

400 8th St., Traverse City, MI 49686
(231) 947-5600 dan@hubbelllawoffice.com

Danelle Kinney

21847 310th St., Red Wing, MN 55066
(651) 380-9600 haugenhill@hotmail.com

Janet Long

23 Howards Lane, Epsom, NH 03234
(603) 930- 6975 janet@northeastshires.com

Gene McCaffrey

267 Sholtes Rd., Schoharie, NY 12157
(518) 872-1295 oxkill@capital.net

Paul Tyrell

PO Box 320, Upperville, VA 20185
fourinhand@gmail.com

Secretary

Myrna Rhinehart ~ Secretary

P.O. Box 408 ~ Lake Delton, WI 53940
Phone: 888-302-6643
email: secretary@shirehorse.org

The Editor's Note:

Hello Members:

Wow– what a winter for me. Ended up with both my boys sick and it has slowed us down here. Brett had sinus surgery and my Connley ended up with a few days in the hospital , all in December. We are all well now, and I am now sending you one of the best bulletins to date!!

A few high points in this issue: 1)Show results are posted and new this year are some of the pictures that I have scavenged or were submitted. 2) Two neat articles on how people found our wonderful Shire breed and the people that helped them get started. 3) Also some cool news about Shires in other areas of work. Keep all these great items coming!!

Our Facebook page has reached over 1,000. “Share” it– lucky number 1,500 will receive a free one year membership.

Our 2013 National is well under way in planning – the 2013 Annual meeting is a “go” in Davis with tons to talk about– everyone is welcome to attend these events! We would love to see you.

We have new BOD Members– feel free to contact them and chat– all of us on the BOD do like to hear from you. Your concerns and ideas are important to us and the Shire.

Lots of things on the list..... to do and accomplish in the name of the Shire Horse!! It truly is an exciting time to be involved.

Hope your Holiday Season was good to you– Happy New Year and most of all– wishing every one a blessed Shire Year. Looking forward to all the great foals this Spring.

Leanne

(406) 687-3004
bsshires@midrivers.com



ASHA Fee Schedule
Effective June 1, 2012

At the 2012 ASHA Annual Meeting, the board adjusted some ASHA membership and registration fees for the first time in several years. While domestic annual memberships remain the same, foreign address annual memberships will be \$65 for one year, \$120 for two years, and \$160 for three years. Foreign address Friends of the Shire are \$40. These increases cover additional foreign mailing costs.

Corporate memberships are available to corporate farms, LLCs, and similar entities at \$275 for five years. The entity EIN and the notarized signature for the authorized signer on behalf of the entity must be furnished to ASHA. Horses can then be owned by the entity.

Life memberships are \$800 or \$175 per year for five years. Foreign address life memberships are \$1000 or \$215 per year for five years.

Prefix registrations are \$50 and are available to current ASHA members only. Leases are \$40 each time the ASHA office processes a lease.

Duplicate (replacement) registration certificates are \$40. Either original papers (if requesting a correction) or a notarized statement about the loss of the original must accompany the request and fee for duplicate papers.

Blood type-to-DNA conversion is \$40. Five-generation pedigrees are \$10 when ordered with a registration, \$20 when ordered separately.

Registrations are \$100 up to 6/1 of the yearling year, \$200 after 6/1 of the yearling year and before 6/1 of the two-year-old year, and \$400 after that. (Geldings any age are \$100, and all registration fees are double for non-members.)

Transfers are \$40 for members and \$80 for non-members.

A complete fee schedule is available at
www.shirehorse.org

Need More Information or Assistance?

Contact The Secretary

Office hours are 9am to 3pm CDT Tuesday, Wednesday, & Thursdays.

Myrna Rhinehart Secretary

American Shire Horse Association
P.O. Box 408 ~ Lake Delton, WI 53940

Phone: 888-302-6643

email: secretary@shirehorse.org

www.shirehorse.org

Secretary's Report –

Myrna Rhinehart

From the Book of Numbers in 2012:

Registrations – 117 (76 mares, 35 stallions, 6 geldings)
 Transfers – 188 (125 mares, 41 stallions, 22 geldings)
 Pending Registrations – 13 waiting for hair samples
 Current Membership – 331 (90 Paid Life Members, 11 Pending Life Members)

Some thoughts...

Well, I made it through my first year of holding the position as your ASHA Secretary, and I can still say that I LOVE my job! I have worked at understanding processes and procedures of your organization, and we have made some efficient changes, most of which members will not see on the surface. The board has worked at deciding what changes will be coming that you will see that will add more value and professionalism to ASHA. Membership is steady and increasing as more people recognize ASHA as a benefit to their horse businesses and hobbies. Registrations and transfers are steady, and apparently up a bit. All of these are good reasons to be optimistic for the future of ASHA.

Thank you to those of you who have already renewed your ASHA membership for 2013 and beyond. If you haven't already received yours, membership renewals will be coming shortly. Life Members have been checked against their payments towards the Life Membership, and those that haven't completely paid for their memberships will be contacted. Thank you to those Life Members who sent back our return card. (Life Members who I know want to retain their membership benefits did not get the cards in the interest of printing and postage.) If you didn't send back your contact card, please contact the office. I will double check with Life Members who did not return a card before we take them off the mailing list. There were quite a few corrections, mostly to phone and email contacts which have been corrected in the database. I have also gone through the ballot stubs and checked those against our database for additions or corrections to member information.

Speaking of which, the election process is over for this cycle, and it went very well. If you ever thought that your vote didn't matter, WELL...three candidates ended up just one vote apart! We recounted those three just to make sure of the result!

Looking ahead to 2013, I have some ideas I'd like to implement in time and with the Board's approval of course, to make your Shire experience more efficient and gratifying. If you have some ideas for the Board and me to peruse, please feel free to share it with any one of us! Obviously, there are more intelligent, logical, and creative people in this organization than just those on the Board and in the office!

HOW TO: Find Information on ASHA Shows on the Website

Go to ASHA's website - www.shirehorse.org

When the home page appears, there is a line of menu items just under the masthead at the top of the page.

'Shows' is in the center of that string. If you place your cursor over 'Shows', a menu pops up with the topics listed below. Clicking on a topic will take you into that area. A description of what is included under each topic appears under it.

Upcoming Shows

Scroll down the page until you get to the show you are looking for. Each show is listed as a Regional, Local or National. Coordinator contact information, website for the show, dates, premium book information, judges, closing dates for entries, lodging information and other details may be provided. If it is early in the year, some information may not yet be available. Check back for additional details.

Show Results

Results of ASHA shows from 1996 to the present

Click on the small arrow to the left of 'Select Show' to drop the list of shows. Scroll down the list to the show you want results for and click on it to highlight. Then click on 'Select Show' for those results. You can also export the results to a word document by clicking on '[Click Here](#)' just under the 'Select Show' button.

Point Results

Premier points standings for 2008 to the present

The topic opens on current year standings. Previous years may also be selected. Show and class details for each horse may also be viewed by selecting those options

All North American Entry Form

Entry form and rules for the Draft Horse Journal program

SAC

(Shire Alternative Competition Program started in 2010)

Rewards Shire and Shire sport horse owners for participation in non ASHA Shows or competitions and activities other than shows (competitive trail rides, Pulls, etc.)

Explanation of the program, entry form and rules and list of awards and pictures

USDF (United States Dressage Federation)

Adequan™ All Breeds Awards

Explanation of awards and link to USDF website for more information
 Copy of June 2012 USDF Connection magazine breed of the month article on Shires

Show Eligibility Rules

Shires must meet these rules in order to show in ASHA sponsored shows

Hints for Showmanship

(Small arrow to the right drops a sub menu for **Etiquette** and **Youth Guidelines**)

Etiquette - how to properly prepare and show your Shire at halter

Youth Guidelines - to assist youth in properly preparing and showing Shires

ASHA Show Guidelines

Outline for the American Shire Horse Association Board of Directors, Show Committee (and sub-committees) and the general membership. Set up to help promote the Shire horse through shows and consistent showing practices. It establishes national and regional shows and procedures to be followed at these shows. It creates a method of coordinating Shire exhibitor and management interests at shows and provides recommended responsibilities of the show exhibitor.

ASHA Points System

Explanation of the Premier Points and Horse of the year Program

Advertising Rates:

Support the Shire and Advertise at the Same Time!

We invite you to advertise with us each quarter. There will be two ad sizes available with the option of a text ad in the Breeder's Directory or in the classified section. We will require that all ads be sent in Jpeg or picture format and be camera ready. If you need design help contact one of the editors and we will get you in touch with someone who can help you. At this time all ads are black and white.

***** Your best deal is the Four Issues. You pay for three and get one free!**

****At this time we are not taking cover ads- if the Bulletin expands to that point we will put the inside of both the back and front covers up for purchase.**

*** Classified Ads must be submitted in writing and renewed each issue.**

Contact: Leanne Hoagland bsshires@middrivers.com
406-687-3004 (H)/ 406-939-1263(C)

<u>Ad</u>	<u>One Issue</u>	<u>Four Issues</u>
5 X 7 Inch Landscape	\$100	\$300
3 3/4 X 5 Inch Portrait	\$75	\$200
Breeder's Directory Text Only <i>30 Characters per line including spaces. Six Lines of text total</i>	\$35	\$110
Text Only Classified Ad <i>30 Characters per line including spaces. Six Lines of text total</i>	\$10.00 Per Ad Per Issue	N/A

<u>Newsletter</u>	<u>Estimated Mail Date</u>	<u>Ad Copy Due</u>
Winter	January 15	December 1
Spring	April 15	March 1
Summer	July 15	June 1
Fall	October 15	September 1



We Want to Hear from You- THE MEMBERSHIP:

"Meet the Membership". In order to make this section the best it can be, we need your input as a member. There are two parts to this section of the bulletin. Details for each section are listed below. The third and final way you can take part in the Bulletin is by advertising with us:

Individual Member Highlight

We will highlight a few members in each bulletin. Below are several questions we would like to have you answer and return to us with a picture to print with your answers to the questions.

Questions to answer: (About 300 Words)

- 1) Name and business name if any
City and State
Email address/ Phone if you want
Family
Prefix
- 2) What is your background in horses and how did you get into Shires
- 3) Shires Owned:
- 4) What do you do with your horses?
- 5) What are your future goals with your horses?
- 6) What would you like to see in the future for / from ASHA?

Member News

Send us pictures or small write ups (paragraph to a few sentences) of what you are doing or is interesting with you and your Shire horses.

- Promotional
- Just for fun
- Shows
- Pulls
- Trade shows
- Awards and honors

Contact YOUR Editors for More Info!!

Leanne Hoagland

(406) 687-3004
bsshires@middrivers.com

Kim Mutchison

(970) 625-1142
thshire@sopris.net

*** These sections will vary in size due to submissions and space available.*





The American Shire Horse Association

P.O. Box 408
Lake Delton, WI 53940

December 11, 2012

Results of the 2012 ASHA Board of Directors Election and vote on the by laws changes.

Ballots were mailed to 300 members who were eligible to vote. 113 ballots were received from members in 35 states, Canada and Australia, which is about 38% return (historically, about 1/3 of the eligible members vote in the elections).

One ballot for this board election had to be invalidated due to votes for six candidates, rather than five, leaving 112 to be counted for the election. The votes for the by laws changes on this ballot were counted.

Since the numbers for the fifth board position were so close, a recount was made to confirm those results.

James Edmiston	53
Travis Howell	72
Danelle Kinney	70
Sharon McLin	65
Kim Parrington-Murchison	84
Rob Rich	41
Audrey-Lyn Stockton	52
Susanna Thompson	52

The by laws changes were passed overwhelmingly and will become part of the by laws as of January 1, 2013.

Question 1. 93 yes 7 no
Question 2. 93 yes 11 no

Note: A number of the returned ballots did not include votes for the by laws changes, or there was only a vote for one change, so numbers will not total 113.

Submitted by:

Karla Stoner, Nominating Committee Chair
Myrna Rhinehart, Secretary

2012 Nominating Committee Members

Richard Cameron /Janet Long
Burt Stanley/ Dawn Wikel

UPDATE:

2012 **Stallion** **Reports**

Oops: We did not update the form with the new office information!!!

Sorry for the confusion!!

So we have reprinted the form and extended the date for 2013!

See Page 6

Please submit your stallion reports by March 30th!!

All stallions and owners will receive a free breeder's listing in the Spring Bulletin for participating!



American Shire Horse Association

Annual Meeting

Tentative Schedule

<u>Friday, February 15</u>	2 - 4:30 p.m.	Tour of Veterinary Genetics Laboratory, including demonstration of DNA typing process and parentage verification process.
	5 - 7 p.m.	Manager's reception, Hallmark Inn
	Evening Dinner	on your own (many restaurants within walking distance)
<u>Saturday, February 16</u>	7:00 a.m.	Breakfast available, Hallmark Inn
	9:00 a.m.	Morning topics, Education Day: VGL speaker reviewing new tests available since completion of the equine genome and how some registries are using those Brian Coleman on tips when planning extensive travel or a long show season with your horse(s) VMTH speaker on radiographic analysis of ringbone, sidebone, navicular and other leg issues, especially in drafts
	Noon	Box lunches (order on registration form)
	1:30 - 4:30	Hands-on session with Brian Coleman: judge-the-class, cart harness fitting, halter horses vs. hitch horses - are they really different?, and other topics <i>you</i> want to talk about
	5 - 7 p.m.	Manager's reception, Hallmark Inn
	6:30 p.m.	Dinner in private dining room, Seasons Restaurant (next to hotel) - see registration form for information
<u>Sunday, February 17</u>	7:00 a.m.	Breakfast available, Hallmark Inn
	8:30 a.m.	Annual Members' Meeting, Hallmark Inn meeting room
	10:30 a.m.	Annual Board of Directors Meeting (members welcome to attend)
	Noon	Lunch break (lunch on your own)
	1:30 p.m.	Annual Board of Directors Meeting (continued)
	5 - 7 p.m.	Manager's Reception, Hallmark Inn
<u>Monday, February 18</u>	Evening Dinner	on your own (many restaurants within walking distance)
	6:30 a.m.	Breakfast available, Hallmark Inn
	8:30 - 11 a.m.	Annual Board of Directors Meeting (continued)

* * * * *

Special rates at the Hallmark Inn are valid for Thursday through Monday nights. Call 800-753-0035 or 530-753-3600 for reservations; mention that you are with ASHA (Group # 289) to receive the \$109 (king) or \$119 (two queens) rate. Includes breakfast and drink vouchers. ASHA's room block will be held until Friday, January 25; the rate will be honored after that if rooms are available.

REMINDER!
RENEW YOUR
MEMBERSHIP TODAY!



Dear ASHA Member,

The American Shire Horse Association Annual Memberships expired as of December 31st. To continue receiving great member benefits such as reduced registration and transfer fees, the Bulletin newsletter, and invitations and announcements

regarding Shire horse activities, please renew your membership today. Annual Memberships not renewed by January 31st will no longer receive association mailings.

To renew your ASHA Membership:

- 1. Go to the ASHA website, www.shirehorse.org**
- 2. Download a membership form and send in to the office at the address below with your payment.**

OR you can always call us at 888-302-6643 during office hours and we will be happy to renew your membership over the phone with a credit card.

Memberships are available for 1, 2, or 3 years, as well as Life Memberships.

Your support of ASHA goes a long way to ensure the future of the Shire breed in the United States. Help us save the postage and printing of mailing a renewal notice to you.

Don't delay, renew your membership today!

Blessings,
Myrna Rhinehart
Secretary
American Shire Horse Association
P.O. Box 408
Lake Delton, WI 53940

888-302-6643 office



American Shire Horse Association
Budget vs. Actuals: 2012 Approved Budget feb. 19,
2012 - FY12 P&L
January - December 2012

	Total	
	Actual	Budget
Income		
Advertising Special Projects	2,000.00	3,400.00
Bulletin/ Magazine		
Advertising Newsletter	660.00	1,300.00
Total Bulletin/ Magazine	660.00	1,300.00
Contributions/ Donations Income	920.49	0.00
Education Day Proceeds	343.80	0.00
Equine Affaire	869.00	400.00
Horse Show Income	2,203.39	
Interest Income	45.55	75.00
Legal Defense Fund (Assessment)	200.00	0.00
Membership Dues		
1 Year Membership	4,325.00	5,500.00
2 Year Membership	3,260.00	2,250.00
3 Year Membership	270.00	1,170.00
Corporate	275.00	
Life	4,538.00	1,800.00
Total Membership Dues	12,668.00	10,720.00
Merchandise Sales	2,136.00	2,000.00
On Line Stud Book Revenue	1,504.00	1,700.00
Raffle Sale Proceeds	1,359.06	1,000.00
Registry Income	30.00	
Genetic Identification Revenue	370.00	200.00
Lease		200.00
Pedigree	40.00	20.00
Prefix reservation	400.00	100.00
Registrations	12,498.40	15,000.00
Replacement papers	420.00	30.00
Sport Horse	1,490.00	750.00
Transfers	8,060.00	6,000.00
Total Registry Income	23,308.40	22,300.00
Service/Fee Income	35.00	0.00
Shires4Sale.com Revenue	451.20	450.00
Uncategorized Income	39.78	
Total Income	\$48,743.67	\$43,345.00
Gross Profit	\$48,743.67	\$43,345.00

Expenses

Advertising	827.40	2,000.00	Office Expenses & Supplies	1,278.40	1,500.00
All-North American Contest Expenses	311.99		Payroll Expenses	389.00	
Bad Debts	125.00		Taxes	1,080.00	1,000.00
Bank Charges	362.85	1,300.00	Wages	9,600.00	9,600.00
Credit Card Charges (PayPal)	277.64		Total Payroll Expenses	11,069.00	10,600.00
Total Bank Charges	640.49	1,300.00	Postage	513.78	1,199.98
Board Expenses	550.00		Promotional	519.62	5,500.00
Annual Board Meeting	767.83	200.00	Equine Affaire Costs	1,363.00	
Telephonic Meetings	443.53	1,000.00	Total Promotional	1,882.62	5,500.00
Total Board Expenses	1,761.36	1,200.00	Registry Expenses	428.00	
Contributions	180.00		Genetic Marker Costs	3,611.00	4,000.00
Dues & Subscriptions	490.00	750.00	Registry Discounts	865.53	300.00
Education Day Cost	32.95		Total Registry Expenses	4,904.53	4,300.00
Finance Charge		10.00	Taxes & Licenses	21.00	50.00
Horse Show Costs	260.47	2,050.00	Telephone Expense	685.32	1,000.00
Awards	1,765.61	750.00	Internet Access		0.00
Total Horse Show Costs	2,026.08	2,800.00	Total Telephone Expense	685.32	1,000.00
Insurance	538.67	1,200.00	Transition costs	68.85	2,000.00
Legal & Professional Fees	10.00	500.00	Transiton travel	1,467.10	
Mailings to members			Total Transition costs	1,535.95	2,000.00
Ballots	439.22	500.00	Travel	1,678.93	2,500.00
Bulletin		4,600.00	Youth Awards	38.02	50.00
Newsletter Honorarium	750.00		Total Expenses	\$39,813.39	\$46,459.98
Postage Bulletin	1,656.81		Net Operating Income	\$8,930.28	\$ -3,114.98
Printing Bulletin	4,083.83		Net Income	\$8,930.28	\$ -3,114.98
Total Bulletin	6,490.64	4,600.00			
Membership List		500.00			
Postage - Memb. List	289.35				
Printing Memb. List	453.66				
Total Membership List	743.01	500.00			
Minutes		750.00			
Postage Minutes	105.93				
Printing Minutes	309.61				
Total Minutes	415.54	750.00			
New Member Packets	97.72	150.00			
Total Mailings to members	8,186.13	6,500.00			
Merchandise Product Cost	944.33	1,500.00			
Merchandise Sales Tax	97.90				
Merchandise Shipping Costs	33.54				

Cont. Next Column



Ideas and Proposals or Issues of Concern

The ASHA BOD and Administrative staff would like to invite all members to participate in the 2013 Annual meeting. Your issues, concerns or ideas are important to us.

Please submit all information in writing to the ASHA Secretary by February 11, 2013. She will then forward all information to the BOD for consideration and discussion at the 2013 Annual Member and BOD meetings.

Below is an example of how the SAC Program was introduced at the 2010 Annual Meeting. Please follow the format:

- 1) Name
- 2) Date
- 3) Issue, Concern, Idea
- 4) Suggestions for Solution

EXAMPLE:

Leanne Hoagland
ASHA BOD Meeting February 2010
Proposal #1

Shire Alternative Competition Program (SAC) and Shire Ride and Drive Program

Issue:

Many of the members are unable to show their horses at ASHA Regional or National Shows. Thus, they are not getting points or recognition for the activities and placings of their horses through ASHA. These members are showing in local open horse show circuits, dressage, competitive driving or even farm shows.

They are promoting their horses while having fun and working with their local opportunities.

Solution:

The American Paint Horse Association does the PAC program for their members. Members fill out the nomination form for horses to be considered for points from outside shows and events. Events too, must be nominated with a signature from the show secretary. After each show the member fills out a form that has the classes shown, number of horses in the classes, and placing for the horse. The form must have the signature of the show secretary as presented on the show nomination form and then sent to the office. There points are recorded. After so many points the horse is awarded certificates of achievement in that area- ie trail, pleasure driving, log skidding or even western pleasure to name a few. (I will have these forms at the meeting for in-depth discussion)

This system would be separate from the premiere points system that is affiliated with the Regional and National Shows.

Each horse has an annual nomination fee that must be sent in with the nomination application to offset costs in calculating and tracking the program.

Shire Ride/ Drive Program would run similarly to the ride program that the AQHA does. Members fill out an application for themselves and their horse. They track their hours of rides or driving and turn those in. After mile stones we send out certificates or awards of recognition for time spent with their Shire horse.

Myrna Rhinehart Secretary

American Shire Horse Association
P.O. Box 408 ~ Lake Delton, WI 53940
Phone: 888-302-6643
email: secretary@shirehorse.org

The American Shire Horse Association

2013 Annual Members' Meeting

TENTATIVE AGENDA

- 1) Call to order – President
- 2) Introductions - Board members, secretary and members present
- 3) President's Report –
- 4) Other Reports
 - Office transition - status and forward plan
 - Update – Shires at the 2013 National Clydesdale Sale
 - Review of ASHEF activities over the last year.
- 5) Open discussion of matters of interest to the membership
- 6) Adjournment

Members and guests are invited to stay for the Annual Board of Directors meeting which will start shortly after the conclusion of the Members' Meeting.

Meet Your New BOD Members

James P. Edmiston
311 Horton Road
Edgewood, NM 87015
Phone: 505-286-6233 (H)
505-238-9288 (C)
Email:
Jedmis1@usibm.com

Sharon McLin
P.O. Box 957
Silt, CO 81652
Phone: 970-876-5979
970-379-8569 (C)
Email:
msbshire@sopris.n

Travis Howell
2365 Clinger Drive
American Falls, ID 83211
Phone: 208-681-9290
Email: howetra2@isu.edu

The American Shire Horse Association
2013 Annual Board of Directors Meeting

TENTATIVE AGENDA

- 1.) Call to order
- 2.) Roll Call
- 3.) Election of officers and New BOD Member Transfer
Signing of the directors pledge for all board members
- 4.) Appointment of Secretary
- 5.) Additions/Deletions to Agenda
- 6.) Reading and approval of minutes not yet approved
- 7.) President's report –
- 8.) Secretary's report
Review of Secretary job description & recommendations
- 9.) Treasurer's report
Review of Treasurer's job description & recommendations
- 2012 Financial report
- Review of financial policies and recommendations
- 11.) **Committee reports** (active committees only):
- Breed Promotion (advertising & expos) – Pam/Karla add Myrna or Rob Rich, or...
- Breed Shows – Vicky McCaffrey
- Approve the schedule for all proposed National and Regional shows,
- Budget money for shows and Premier Points Awards
- Shire All American North Program
- SAC Program Update and Review- Leanne
- The American Shire Horse Educational Foundation – Paul, Ken, Karla
- Shire Pedigree Analysis Project - Karla
- Members' Bulletin & Facebook – Leanne
- Membership Services –
- Merchandise - Karla
- 2012 Nominating Committee - report and recommendations
- Printed Studbook – status of 2005 – 2007 and 2008 – 2010 volumes –
- Rules and Editing – Gene and Karla
- Voluntary Stallion Inspection Program – status - Paul
- Website – report - Youth – Report from Danelle
- Education Day & Annual Meeting- Kim and Sharon
- Stallion Service Reports – Leanne - Statistics Committee-
- 12.) Old business:
 - a. Membership - Board
- Increasing membership
- Discount for annual member dues renewal – retain members
- Reciprocal ads to increase advertising
- Re-evaluate assessment - what is the thought here? How is it to be re-evaluated?
- Communication improvements – utilization of 'social net-works'
 - b. Draft Registries Collaboration Project – Status and decision – Todd & Karla
 - c. Other
- 13.) New Business:
 - a. U.S. Livestock Genetics Export, Inc. – Resource for aid in expanding into global marketing? - Karla
 - b. 2013 budget discussion - Board
- Addition of separate budget item for Shire All American Program
 - c. 2013 budget approval - Board
 - d. Multiple registrations – pros & cons - Kim
 - e. Review of action items from 2012 annual meeting
 - f. Committee assignments
 - g. Annual Meeting location for 2014
- Annual meeting committee assignments??
 - h. Other
- 14.) Adjournment



Do you love Shires?

Become a Youth Member! It's easy!

To join simply fill out a membership form found on the ASHA website or call 888-302-6643. Membership dues are \$15/year (\$25/year for foreign addresses). *Applicants must be 18 years of age or younger at time of application.*

Why should YOU join?

- ★ Meet new people
- ★ Receive recognition for hard work
Youth Achievement Program
Gifts awarded
- ★ Prepare for the future
Scholarship available

For more information:

Danelle Kinney
ASHA Youth Committee Chair
haugenhill@hotmail.com
21847 310th Street
Red Wing, MN 55066
651-380-9600

BREED PROMOTION

MANY THANKS to all these members for their effort and dedication to promote SHIRES!! |

Breed Promotion Events Schedule (other than shows)

Recently Completed Events:

First Annual Fall Classic Draft Horse Sale – Michiana Event Center, Howe, IN. October 26 & 27. Put on by the Clydesdale Breeders of the USA and open to all breeds. Eighty-four horses went through the sale, including the entire stock of 27 2S Clydesdales (Pat McMahon, Schulenberg, TX). 2S horses set some sales records for prices, and brought breeders in from Canada, Germany and Scotland. Average selling price on these horses was \$11,692. However, after those horses sold, prices dropped back down and the remaining 57 horses that sold had an average price of \$1939. Four Shire geldings went through the sale, but the final bids were not acceptable to the owner. Further information is available in the winter issue of the Draft Horse Journal and on www.clydesusa.com. ASHA had an information /merchandise booth at the event for both days. Traffic through the entire booth area was light. Thanks to Sharon and Ron McNew for their support.

Equine Affaire, West Springfield, MA – Eastern States Exposition Grounds - November 8 – 11, 2012. Gene and Vicky McCaffrey, Bernie Kuczek and Brian Reid had horses in the breed stall throughout the show. The main breed demo was on Saturday in the Coliseum, with a good crowd in the stands. Shires were shown in hand, ridden and at liberty. 2012 also marked the 15th and final year that McCaffrey’s stallion, Metheringham Upton Issac was at the Massachusetts Equine Affaire. Issac has become a very well known and admired participant in this event, which has done much to promote Shires and to educate the public about the breed. **ASHA Booth:** Attendance was down this year due to the two storms just prior to the event, which affected all aspects of the show. There was good traffic through the booth, but not at the levels seen in previous years. A number of breeder’s brochures and tri-fold brochures were picked up and numerous questions about Shires answered, including questions on transfers and registrations. Seven membership applications were taken, including a few interested in youth membership. Merchandise sales totaled \$859.25, which was down significantly from 2011, due to the lower attendance.

For this year, there were 12 reported events in 9 states. Three applications were received for the \$150.00 stipends, but one applicant cancelled, so only two stipends were paid out. This is less than half of the available stipends.

Upcoming Events:

No definite information on participation at the time this information had to be submitted, but there is usually participation at Horse Fairs in Illinois, Nebraska and Iowa in the first quarter of the year.

Ohio Equine Affaire – State Fair Grounds, **Columbus**. April 11 - 14. Todd Riedel and Emily Cullison will be organizing this event again this year. Any members interested in bringing horses, please contact Todd or Emily (traillightfarms@aol.com). There will be a breed stall and information booth in the barn and Shires will be represented in the breed demos. If you are interested in helping with the information booth, contact Karla Stoner (bloomforge@peoplepc.com).

Horse Progress Days – Arcola, IL. July 5 & 6. **ILLINOIS MEMBERS** – ASHA would like to have Shires at this event. Please contact Karla Stoner (bloomforge@peoplepc.com) or Todd Riedel at (traillightfarms@aol.com) if you are interested in bringing Shires either for breed demos or as working animals (note: HPD must approve all horses that will be used to demonstrate equipment.)

If you have an upcoming promotional event for Shires or recently participated in an event, we would like to publicize it in the Members’ Bulletin and on the website. We can also help with Shire and ASHA information for display and handout. Contact Myrna Rhinehart (secretary@shirehorse.org) or Karla Stoner (bloomforge@peoplepc.com) with reports and requests for handout material.

FUNDING YOUR EQUESTRIAN DREAMS...

The Dressage Foundation launches its new Equestrian Fundraising School

The 2012 inaugural classes of students at The Dressage Foundation's Equestrian Fundraising School learned about a rider who received a \$1,000 monthly income stream for ten years to help pay her equestrian expenses – arranged by a generous Donor who established a \$250,000 gift at the Foundation to make this possible! And, then, the Donor did it again – a second identical gift, which provides an income stream to the rider through 2018! This is but one of the real-life charitable gift arrangements from The Dressage Foundation's gift inventory, presented, discussed and explained to equestrian students at the School.

Olympian Carol Lavell says: "For most riders, financial support becomes the ultimate hurdle." John Boomer, past President/CEO of The Dressage Foundation, and Co-Founder of the School, adds: "Fundraising – it's needed by most equestrians in all disciplines, the techniques have not been taught, and who better to do it than The Dressage Foundation whose very business is raising money, managing it, and giving it away."

The Dressage Foundation has worked to develop, design and focus-group-test a program to help equestrians learn about fundraising and giving so they can help themselves by developing monetary support. The result is the new Equestrian Fundraising School, welcoming its inaugural classes of students in 2012, and now enrolling students for the sessions in 2013.

The Equestrian Fundraising School offers a comprehensive curriculum of ideas, techniques, examples, and real-life cases of fundraising and giving. A distinguished national faculty teaches the fifteen course lessons through convenient online webinars, while students are saddled up in their own computer chairs. Students can ask questions while online, to which Foundation staff, advisors and faculty will personally and promptly reply. Graduates gain solid "how to" fundraising knowledge, practicum experience, a diploma, and a packet of personalized printed stationery to get their fundraising activity underway. A special bonus offered by the School will be for students to secure personal guidance from Foundation staff and its professional legal/financial advisors on how to plan, prepare and present proposals to Donor prospects.

"The Equestrian School will be invaluable to equestrians in all disciplines of horse sport – not just dressage – and to riders at all levels from grass roots to high performance. English-speaking international students are welcome. During the development of the school, interest has been shown widely from equestrian students of all ages," said Karin Reid Offield, Co-Founder of the School.

Full details about the Equestrian Fundraising School can be found on The Dressage Foundation website, www.dressagefoundation.org. You will find information about the School, the curriculum, the lesson subjects, the faculty members, webinar mechanics on how you participate, the schedule and timing of lessons, and tuition costs.

JONATHAN R. BURTON
Major General, US Army Ret.
Chairman
Board of Directors
The Dressage Foundation

MICHAEL POULIN
Olympian
Vice-Chairman
Board of Directors
The Dressage Foundation

ASHA Mission and Purpose Statements

Mission Statement

The Mission Statement of the American Shire Horse Association is to maintain the integrity of an accurate registry and promote the Shire breed through excellence.

(Developed at the 2002 Annual meetings)

Purposes: (summarized from the ASHA by laws and articles of incorporation)

- To form, conduct and operate a non-profit organization composed in whole or in part of persons, firms and/or corporations having interest in the breeding and improvement of Shire horses;
- To foster and preserve the traditions pertaining to the Shire horse;
- To encourage original investigations in determination and development of the best types of horses and the breeding to only purebred sires;
- To assist in procuring and making available for breeding suitable stallions and mares;
- To collect, revise, preserve and publish the history and pedigrees of purebred horses, particularly Shire stallions and mares, under such regulations as may be prescribed by said organization;
- To do all and every other act or thing necessary, suitable and/or proper for the accomplishment of all or any of the purposes or in the furtherance of any of the powers herein set forth and to do every other act or thing incidental to or appurtenant to or connected with said powers.

Meet the 2012 United States Dressage Federation's Champion Shire and Shire Cross

ASHA is proud to recognize the achievements of two of its registered horses for the championship awards they received this year from the United States Dressage Federation (USDF).

The USDF offers the All-Breeds award program to recognize the accomplishments of certain breeds in the sport of dressage. ASHA sponsors awards for Shires and Shire crosses registered with ASHA. Awards are sponsored from 1st to 5th place for Adult Amateur, Junior/Young Rider, and Open categories, as 1st to 3rd place for Musical Freestyles.

Trail Light's Make Your Mark (known as Mark), owned by Laura Carnahan of Holly, Michigan is the 2012 USDF Training Level Champion Shire. Laura has owned the eight-year old gelding since he was one year old and has trained Mark herself with only a few occasional lessons. She pursued dressage when she discovered Mark's willingness to learn and affinity for the sport. In October she and Mark competed at the USDF regional finals at the Kentucky Horse Park.



HUSKA Millennium Shire's Sundance Kid (known as Tango), owned by Rhiannon Yard of Chino Hills, California is the 2012 USDF Fourth Level Champion Shire Sporthorse. Tango's sire is *HUSKA Millennium Shire's Murphy's Law*, the 2011 USDF Prix St. Georges Champion registered Shire, and is out of a Thoroughbred mare. Rhiannon, a professional horse trainer, bought Tango as a three year old and has trained him herself. Now nine years old, Tango has begun showing at Prix St. Georges and will be campaigned at this level during the 2013 show season.

ASHA wishes to congratulate Laura and Rhiannon on their remarkable achievements. Shires and Shire Sporthorses are becoming more popular in the sport of dressage, and their participation in this activity helps raise awareness and appreciation for the Shire horse.



Statement of Position on Animal Care*

The American Shire Horse Association encourages Shire owners to:

- Provide a high standard of livestock health;
- Manage livestock in a humane manner;
- Use and maintain transportation and handling facilities that provide livestock health and safety;
- Provide feed and water to maintain livestock health and productive ity;
- Consult with a licensed veterinarian concerning animal health care practices;
- Use approved livestock health products according to label directions;
- Sustain and conserve natural resources by proper management of land, air, water and wildlife;
- Support and maintain rural and family traditions important to our society.

*Resource: National Pedigreed Livestock Council (text provided by member Sharon McLin)



Foal CPR App for iPhones:

As you may know every year foals are born that are either not breathing or gasping for air. Often by the time veterinary help can be contacted or arrive it is too late. The foal has either died or suffered brain damage (dummy foal syndrome). Effective CPR can prevent these tragic losses.

To help inform breeders on how to deliver effective CPR, international foal specialist Dr Kevin Corley has produced a free iPhone App with step by step instructions, photographs and video. The App is easily downloaded from the Apple iTunes store by searching for Veterinary Advances Ltd.

Please help us promote effective CPR in foals by letting your members know about this fantastic new resource.

I have confirmed that the APP at <http://itunes.apple.com/artist/veterinary-advances-ltd/id376559153> is free .

Many thanks ,

Jennifer

Jennifer Stephen BVMS, MRCVS,
DECVS
Director Veterinary Advances

Veterinary Advances- Apps for Veteri-
narians

www.veterinaryadvances.com

Telephone: 00353 87 994 1570 / 00353 45 456 899



**NEWS
FLASH**

Are you taking your Shires to a Horse Expo or event to "promote" the breed?

ASHA offers a few \$150 stipends to the first members that apply (and qualify) for them.

Please Contact **Karla Stoner**
(301)874-3250 or Email: bloom-
forge@peoplepc.com



Ayrshire Farm is Proud to announce the release of **Achenbach** Hitching And Driving

A video Companion .

This instructional DVD delves into the highlights and key parts to the Achenbach driving methods and is an accompaniment to the book also available from Ayrshire farm.

Please visit our website
www.achenbachdriving.com
for more information and how to order



It's Show Time

Many opportunities to showcase your Shire

By: Kim Murchison of Tally Ho Shires

When I was a little girl, I hung over the rail at the National Western Stock Show and swore that one day I'd be doing that. "That," of course being showing Ladies' Cart at the Draft Horse Show. I think many people get involved with and even purchase their Shires after having a similar epiphany. One of the great aspects of the draft horse industry is its ability to involve the whole family and allow many faucets for exhibiting your Shires. This article will showcase some of the many opportunities that are out there for showing your Shire.

Many areas have "local" draft horse (or driving horse) clubs that get together on a monthly or bi-monthly basis and host driving events. Our local draft horse club hosts farming days, poker runs, arena fun-days, progressive dinner-drives and fun drives. It doesn't matter what kind of horse (mini, Qtr, draft) or mule you have, everyone is welcome to come and participate. These days are not usually competitive, but more educational and cooperative. We even have days where new members with young horses can come and get help with harnessing and starting their youngsters. Some of our members have no horses at all and are just "interested in," or maybe looking to buy their first driving horse and want to get experience. If there isn't something like this in your area, start a local club yourself and encourage others to join. These clubs are very easy to start and run and usually receive good support. Our local club collects a small fee from each family, part of it goes to our State Draft Horse Association and part of it goes to our club to fund our activities. We almost always host a pot-luck lunch/dinner with our club meetings and these are a great time to talk with each other and get to know new members.

Several areas of the country have "all-breeds" shows or summer circuits. These are smaller shows that usually have age-level halter classes, riding and driving classes. Although you would be showing your Shire with light breeds of horses, these are great shows to "get your feet wet" at. It can cost anywhere from \$5-\$15/class and give you an opportunity to get your horse some show experience. Even if you just take your horse down to the show grounds and drive/ride it around during this event, your horse gets a great experience seeing and hearing all of the "show" sites. It's a great opportunity to practice braiding your manes and tying up your tails as well.

There are Draft Horse shows all over the country, especially during the summer months. These shows concentrate on halter classes and driving classes for all breeds of Draft Horses. Some of the shows are smaller, local shows, others are larger shows, but all of them offer classes for just about every draft horse owner.

The following classes are available:

Halter Classes: These are strictly conformation classes that judge the overall movement and conformation (body style/shape) of your horse compared to other horses in the class. You should be dressed in nice slacks/pants and a clean shirt (many farms have polo shirts with their farm logo on them). Your horse should be well trained (work with them at home to practice); clean, shod (usually with scotch bottoms) and braided up to participate in these halter classes. Halter classes are more beneficial for the younger horse that a person is planning on breeding. You can find out a lot about your horse by talking with the judge after the class about why he/she placed your horse the way he/she did. Be prepared to hear about your horse's strong "points" as well as their "faults." These remarks are helpful in choosing what animal to "breed" that animal to down the road. You always want to breed them to a horse that will compliment their conformation not detract from it. Remember that each halter class is one person's opinion on that day and horses rarely place the same way twice.



Pleasure Classes: Some offer "pleasure classes" where the horses and drivers are judged on their "way of going" and "pleasantness to drive." Picture taking your horse for a drive down a country lane. In these classes you can show in breast-collar harness or even farm-type (nylon) harness as long as it's clean and fits properly. Your horse may be shod with Keg shoes or even barefoot, but should be clean and braided properly for the ensemble that they are pulling. You may see a men or ladies' pleasure driving cart class. The horses will be asked to walk, trot (usually a slow trot and fast trot) and back. Occasionally the judge will ask the drivers to perform other maneuvers as well to show how well the horse is broke to drive.



Farm Classes: These classes are offered for the people that use their animals mainly for farming purposes. Some of the classes that might be offered are: log skidding (team or single), farm team (on the rail and obstacle) and the feed team race. These classes should showcase the “drivability” of the horses and their willingness to work for their driver. They are judged on “way of going” (do they work together, are they serviceably sound) and ability to do the task at hand. Many classes work on a point or time system as well. These are fantastic classes to “practice” for at home and participate in, as they are “fun” and usually very “crowd-pleasing” as well.



Leanne Hoagland driving her shire team in obstacle

Amateur Classes: These classes are offered for the “newer” people that are getting into showing draft horses. There are usually amateur cart and team classes in the draft horse division. These classes are usually judged 50% on the horses’ look/movement/way of going and 50% on the driver’s ability. These are great classes that allow newer drivers the chance to get out there and show and not have to compete with the people that have been doing this for several years in a professional capacity. This idea has carried over from the light horse breeds that have seen great participation by amateur owners. Drivers should have their horses well trained, clean, harness properly fitted, horse(s) braided and shod for these classes. Many of the judges will actually speak with the drivers in these classes to tell them what they “liked” about the drive and what could be improved upon in the future.

Hitch Classes: These classes are offered for anyone interested in competing from cart classes up to the 6- and 8-horse hitches. Whether you are showing a carhorse or a 6-horse hitch, these are the top of the industry as far as breeders and showmen that are showcasing their horses. The competition here is high and horses that participate in these classes should be in their prime. You’ll see the fancy bio- or patent-leather scotch-collared harnesses as well as show carts and hitch wagons. These horses are shod with scotch-bottom shoes, clean and fit, and all manes and tails are braided up.



Youth Classes: The draft horse industry emphasizes the youth classes as a way to build the draft horse industry in the future. You will see classes for youth’s (usually 8 years old to 18 years old) in halter, cart and team. These classes are judged on the youths’ ability to properly handle and drive their horses. Many judges will spend time talking with the youths after the class to explain why they placed the class the way they did. Many of the best showmen in the industry started in these classes when they were youths.

Riding (Under Saddle) Classes: Many draft horse shows are embracing the aspect of riding draft horses as well. Classes such as English, Western, Hunter Hack, Dressage and Bareback are popping up all over as the drive to ride our draft horses increases. Horses should be clean, fit and properly tacked up depending on the class that they are in. Horses may or may not be shod and may or may not be braided. Many Shire owners are also showing their horses in USDF Dressage shows around the country.



The American Shire Horse Association offers National and Regional Shire Shows throughout the country to allow Shire owners to exhibit their horses with and against other

Shires. Classes are offered for registered halter, cart (mare, stallion/gelding), team, 4-horse hitch and 6-horse hitch. The goal is to place Regional Shows in close proximity to many Shire owners and encourage their participation. The National Shire show currently rotates between the east coast, Midwest, and west coast and is held once a year. Since the Shire is somewhat unique in its build compared to other draft horse breeds, it’s nice to be able to compete against other Shires and see how your horses “stack up.” Regional Shire shows are scattered around the country to accommodate Shire owners and enthusiasts. The “level” of showing at these events depends on the entries that can be pulled in. Some of these regional shows host amateur, pleasure, and farm classes as well as hosting halter, hitch, youth and riding classes. These are great events to meet other Shire owners and exhibitors and see what kind of Shires are out there.

Whatever you choose to do with your Shire is up to you, and there are many avenues that you can take. Try and make contact with other draft horse owners in your area, and seek out their advice and guidance. Get on the phone and email draft horse owners/breeders with questions. If you think you want to show, take the time and attend a few of these shows to watch what goes on before you take your horse out. Don’t hesitate to call a fellow draft horse breeder and ask them questions or even ask to “crew” for them at a show to see how it’s all done. We have many people that come to shows with us to help out and learn what it’s all about. You have to start somewhere and most draft horse people are fantastic about answering questions and offering helpful suggestions when you need them. The draft horse industry is truly one of the best groups of people to be involved with.

Quarterly Registrations: Sept. 12, 2012—Dec 26 2012

Remember to check your documents for errors upon receipt from the Secretary.

The information here is from the database at the office..

ESCRICK SINA (149659) - 24699-M

Mare; Black. Double whorl above eye level, left whorl at edge of star, right whorl within star; irregular blaze with irregular star, point over left eye; conjoined blaze wider under right eye to both nostrils and muzzle; lower lip white. Left foreleg white stocking to base of knee. Right foreleg white stocking to base of knee. Left hind leg white stocking to mid-hock. Right hind leg white stocking to mid-hock. Foaled May 9, 2010; Bred by BRIAN RATHMELL, Southwram Halifax UK Registered by MANUEL COLLADO LACAYO, Miami, FL; Sire PENRHOS BRAVE HEART (47110); Dam SOUTHRAM PRINCESS (147251).

GTEC WANDAMERE BJ - 24697-M

Mare; Black. Wide blaze with round star and points above both eyes, continuing over both nostrils; chin and lower lip white. Left foreleg high white stocking to above knee. Right foreleg white stocking to knee, lower in front. Left hind leg white stocking from below hock in back, extending to stifle in front. Right hind leg white stocking from below hock in back, extending to stifle in front. White spot middle of chest; roaning in flanks. Foaled May 18, 2011; Bred and owned by THERESA and GREG BONINE, Elizabeth, CO; Sire DANGEL'S DAKOTA BLIZZARD 23070-S; Dam WANDAMERE BUNNIE B-23127-M.

JENSON DEFENDER JANE - 24696-M

Mare; Black. Wide blaze, dip on left side near eye, continues over nostrils. Left foreleg white sock below ankle in back, higher in front, with point to knee on outside. Right foreleg white stocking to knee. Left and right hind legs white stockings from below hocks in back, to hocks in front. Avid #900026000105101 Foaled April 21, 2012; Bred and owned by JENSON SHIRES LLC, Blair, NE; Sire BLACK PARK DEFENDER 23230-S; Dam JENSON'S DIPLOMAT JILL 24394-M.

MARCH WITH KATIE - 24698-M

Mare; Black. Wide pointed star with connected narrower stripe to wide snip over nostrils; white chin. Left foreleg white stocking to above knee. Right foreleg white stocking to above knee, higher than left. Left hind leg white stocking to below hock, inside white above hock. Right hind leg white stocking to below hock, inside white above hock. White softball-size spot, right side; white baseball-size spot behind left front leg. Foaled March 12, 2011; Bred and owned by KEN KNUTH, Slayton, MN; Sire FOREST HILLS BREMER 22759-S; Dam DOUBLETREE KATE 24353-M.

RM'S SPLITTING IMAGE - 24693-M

Mare; Black. Medium blaze widening near right eye, continuing over nostrils; black upper lip, white lower lip and chin. Left foreleg white high jagged stocking over knee. Right foreleg white high irregular jagged stocking to knee in front, above knee behind, sabino markings above inside. Left hind leg high white stocking to below hock in back, to stifle in front; sabino markings on inside. Right hind leg high white stocking to over hock in back, to stifle in front; sabino markings front and inside. White spot top right hip; white sabino markings on abdomen from girth to between hind legs. Foaled March 30, 2012; Bred and owned by TURIE SORRELL, Concord, VT; Sire LEGACY'S IMAGE 23301-S; Dam TAYSON JULIETTE 24106-M.

ROYAL VIEW BLACK CHERRY - 24694-M

Mare; Black. Wide blaze, widens over both eyes, narrows below eyes on left side, continues to between nostrils. Left foreleg white stocking to top of knee, point on inside to mid-forearm. Right foreleg white stocking to mid-knee. Left and right hind legs white stockings to top of hocks with narrow strips extended to flanks. Small white marking mid-abdomen. Foaled March 29, 2012; Bred and owned by BILL TROYER, Millersburg, OH; Sire FORTHOFER'S MASTER MAURUS 22792-S; Dam ROYAL VIEW PARKED DOLLY 24420-M.

ROYAL VIEW TRIXIE - 24695-M

Mare; Black. Star with points on top left, top right, and near left eye; continuing into strip which widens to between nostrils; upper and lower lips white. Left foreleg black. Right foreleg white stocking to knee, higher in back. Left hind leg white stocking to below hock, higher in front. Right hind leg white stocking to below hock in back, to hock in front. White marking on right side. Foaled April 18, 2012; Bred and owned by BILL TROYER, Millersburg, OH; Sire FORTHOFER'S MASTER MAURUS 22792-S; Dam ROYAL VIEW DIXIE 24606-M.

SPRINGHILL PANSY'S ROXANNE - 24691-M

Mare; Black/Dark Bay. Broad blaze with round star, point over left eye, cutout near right eye, narrows over face, widens over both nostrils; white upper and lower lips, chin, left lower jaw. Left foreleg white stocking to below knee in front, above knee in back. Right foreleg white stocking to below knee in front, above knee in back. Left hind leg white stocking to below hock in back, to stifle in front. Right hind leg white stocking to below hock in back, to stifle in front. Small irregular spots on abdomen left front, left rear, right rear. Foaled June 20, 2011; Bred and owned by STEPHAN M. and JUDY L. O'DWYER, Belgrade, MT; Sire ISLES FIELD DANNY BOY (46916) 23001-S; Dam HEART MT. ROXANNE'S PANSY 23766-M.

TALLY ROSE BUD'S BEST - 24690-M

Mare; Black. Blaze with round star, point near right eye, hook above right muzzle; white over muzzle between nostrils; lower lip white. Left foreleg leg high white jagged stocking above knee. Right foreleg white stocking to middle of knee, higher in back. Left hind leg white stocking to below hock in back, middle of hock in front. Right hind leg white stocking to below hock in back, middle of hock in front. White spot rear abdomen. Foaled January 28, 2011; Bred and owned by LORI J. BEST, Zephyr, TX; Sire TALLY HO COMMANDER 22662-S; Dam LAZY S MIDNIGHT ROSE BUD 23740-M.

THUNDERSTRUCKS SALLY - 24692-M

Mare; Black. Medium blaze with cutout top right side, continues over muzzle; lower lip and chin white. Left foreleg white stocking to mid-cannon, point to knee on outside. Right foreleg white stocking to knee, higher on inside and back. Left hind leg white stocking to below hock in back, to hock in front. Right hind leg to mid-cannon in back to below hock in front. Foaled June 30, 2011; Bred by ADAM & JENNA LUBECK, Junction City, WI Owned by DALE and LORI BEST, Zephyr, TX; Sire THUNDERSTRUCKS D'ARTAGNAN 23324-S; Dam JENSON RHYD-Y-GROES SALLY 23401-M-AI.

FOUR L'S BLACK ALEXANDER THE GREAT - 23412-S

Stallion; Dark Bay. Narrow blaze extending to over muzzle. Left foreleg white diamond on knee. Right foreleg white stocking to knee. Left hind leg white stocking to hock. Right hind leg white stocking to hock. Foaled April 4, 2011; Bred and owned by LOUISE REUBLE, Coupeville, WA; Sire DUA HE CHI'S RADAR 23239-S; Dam FOUR L'S BLACK LUCY 23707-M.

JENSON DEFENDER STORM - 23411-S

Stallion; Black. Wide blaze, wider over left eye with small round extension over right eye; continues over nostrils. Left foreleg white stocking level with knee. Right foreleg white stocking to knee, v-pointed cut-out on right side. Left and right hind legs white stockings from below hock in back, to hock in front. Foaled July 20, 2012; Bred and owned by JENSON SHIRES LLC, Blair, NE; Sire BLACK PARK DEFENDER 23230-S; Dam FOX VALLEY SWEET SUE (144964).

JENSON DIPLOMAT PRINCE - 23410-S

Stallion; Black. Large star rounded at top, pointed at bottom, even with eyes; large snip on lower fourth of face between nostrils, pointed at top. Left and right forelegs level white stockings just below knee. Left and right hind legs white stockings below hocks in back angled to front of hocks. Microchip #900026000104841. Foaled May 4, 2012; Bred and owned by JENSON SHIRES LLC, Blair, NE; Sire DEIGHTON ROYAL DIPLOMAT (46942) 22831-S; Dam JULLIANS PRISSY 24482-M.

LEGACY'S KNOX - 23413-S

Stallion; Bay. Wide blaze, wider over right eye, narrowing above nostrils, to in between nostrils; upper and lower lips and chin white, extending halfway up jawbone. Left foreleg white stocking to knee. Right foreleg white stocking to knee. Left hind leg white stocking to below hock in back to above hock in front. Right hind leg white stocking to below hock in back to above hock in front. Left side large white spot just behind girth; smaller spot on barrel. Microchip #019*877*813. Foaled March 20, 2011; Bred by JASON & VAL BEXSON, Didsbury, AB CAN Registered by RUSSELL A. BRAND, Princeton, MN; Sire RUSKINGTON DANNY (C.499) 22876-S; Dam GLADWIN GOLD JENNY [1789].

MEGGS DEFENDER TIMBER - 23415-S

Stallion; Black. Medium blaze with pointed star, higher on right with point near left eye, continuing over right nostril and chin. Left foreleg black with white band around the knee and white patch just above front coronet. Right foreleg black with white patch in front cannon. Left hind leg white stocking to hock. Right hind leg white stocking to hock extending slightly up gaskin. Small white patch on fore abdomen. Foaled April 7, 2011; Bred and owned by CHRIS and GINA MEGGS, Riegelwood, NC; Sire BLACK PARK DEFENDER 23230-S; Dam WANDAMERE TAMI 23751-M.

MEGGS DIPLOMAT ETHAN - 23414-S

Stallion; Black. Wide blaze with round star continuing to over left nostril and muzzle, chin white. Left foreleg white stocking to knee. Right foreleg white stocking to knee. Left hind leg white stocking to hock in back extending to lower gaskin in front. Right hind leg white stocking to hock in back extending to gaskin in front. Dirty white in right stifle, white under belly. Foaled May 9, 2010; Bred and owned by CHRIS MEGGS, Riegelwood, NC; Sire DEIGHTON ROYAL DIPLOMAT (46942) 22831-S; Dam JENSON'S MAJOR EVE 24231-M.

SPRINGHILL ROCKY MOUNTAIN MAGIC - 23407-S

Stallion; Black/Dark Bay. Wide blaze with round star extending over both eyes, narrowing near left eye, continuing over muzzle, upper and lower lips, chin, jaw. Left foreleg white stocking to above knee. Right foreleg white stocking to knee in front, to above knee in back. Left hind leg white stocking to below hock in back, to stifle in front. Right hind leg white stocking to below hock in back, to high stifle in front. Irregular white marking left abdomen; white marking from right center abdomen to sheath. Foaled May 9, 2010; Bred and owned by STEPHAN M. and JUDY L. O'DWYER, Belgrade, MT; Sire ISLES FIELD DANNY BOY (46916) 23001-S; Dam HEART MT. ROXANNE'S PANSY 23766-M.

STORYBOOK'S ULYSSES - 23408-S

Stallion; Brown roan. Bald face, white to left eyelid, dark around right eyelid; white muzzle, nose, chin and lips; cheeks and jowls white ticking. Left foreleg white stocking to just above knee. Right foreleg white stocking to mid-cannon inside, slightly higher outside; white spot inside knee. Left hind leg white stocking mid-hock in back to stifle in front. Right hind leg white stocking to below hock in back, to stifle and flank in front. White whorl on right and left neck; heavy white ticking on chest, abdomen, legs, flanks; white hairs in mane and tail. Foaled April 11, 2011; Bred and owned by SARAH A. WILLIAMS, Boonville, MO; Sire STORYBOOK'S GULLIVER 22841-S; Dam CINDY JOE TIG 23050-M.

TALLY MIDNIGHT'S BEST - 23406-S

Stallion; Bay. Wide blaze with jagged round star, point over left eye, cutout below point; continuing over nose, mid-nostril on left, over nostril on right; upper and lower lips and chin white. Left foreleg white stocking over knee with dip on outside. Right foreleg white stocking over knee with dip on inside front. Left hind leg white stocking to below knee in back, to stifle in front, extending to hip, level with stifle. Right hind leg white stocking to mid-hock in back, to gaskin in front. White markings left and right throatlatch, and abdomen girth to groin. Foaled April 12, 2012; Bred and owned by LORI J. BEST, Zephyr, TX; Sire TALLY HO COMMANDER 22662-S; Dam LAZY S MIDNIGHT ROSE BUD 23740-M.

FOUR L'S BLACK BRODRICK - 20264-G

Gelding; Black. Narrow blaze extending to over muzzle. Left foreleg white stocking to knee. Right foreleg white stocking to knee. Left hind leg white stocking to just over hock. Right hind leg white stocking to just over hock. White on belly. Foaled August 4, 2011; Bred and owned by LOUISE REUBLE, Coupeville, WA; Sire DUA HE CHI'S RADAR 23239-S; Dam FOUR L'S BLACK WINONA LILLY B-22963-M.

JENSON GULLIVER ATLAS - 20263-G

Gelding; Bay. Medium blaze with rounded star, extending to muzzle in between nostrils. Left foreleg white sock to mid-cannon. Right foreleg white stocking to just above knee. Left hind leg white stocking from below hock in back extending to a point in front of hock. Right hind leg white stocking from below hock in back extending to a point in front of hock. Foaled April 17, 2008; Bred by SARAH A. WILLIAMS, Boonville, MO Owned by JENSON SHIRES LLC, Blair, NE; Sire STORYBOOK'S GULLIVER 22841-S; Dam STEEGE'S ATHENA (7/8-SHIRE) B-23780-M.

RM'S MOVES LIKE JAGGER - 23409-S

Gelding; Dark bay roan. Bald face with white to right eye, left eye dark; white to right nostril, over left nostril; white lips and chin; roaning on cheeks and jowls. Left and right forelegs high white stockings to mid-forearm, higher on inside continuing into chest; right front leg black spots on back. Left and right hind legs high white stockings to above hocks in back to stifles in front with roaning into hips. Mottled skin between legs and sheath. Foaled March 24, 2012; Bred and owned by TURIE and MICHAEL SORRELL, Concord, VT; Sire LEGACY'S IMAGE 23301-S; Dam TAYLOR'S AGATHA 24284-M.

Quarterly Transfers:

Sept 12, 2012 to Dec 26, 2012

Remember to check your documents for errors upon receipt from the Secretary. Contact us if you find any problems.

C-20212-G - The Gelding, COLONEL KARLA (15/16 SHIRE) from MIKE and MONA EVENS, Cold Spring, MN transferred to JAMES M. DUNCAN, Gowrie, IA 7/26/2012

20219-G - The Gelding, LAZY S ACE'S HERMAN from CHARLES E. BURNS, Alexis, IL transferred to RUSSELL V. SPICER, Sparland, IL 4/7/2012

20263-G - The Gelding, JENSON GULLIVER ATLAS from JENSON SHIRES LLC, Blair, NE transferred to CHRIS HOFPAR, Dwight, NE 9/15/2008

22941-S - The Gelding, JENSON'S PREMIER KING from LORI J. BEST, Zephyr, TX transferred to ROBERT HODNEFIELD, Milton-Freewater, OR 10/5/2012

23030-S - The Gelding, LAZY S ACE'S MAJOR from CHARLES E. BURNS, Alexis, IL transferred to RUSSELL V. SPICER, Sparland, IL 4/7/2012

23057-S - The Stallion, FORTHOFFER'S RADAR from BILL TROYER, Millersburg, OH transferred to ANDREW TROYER, Millersburg, OH 9/29/2012

23270-S - The Stallion, FORTHOFFER'S MOSES from RICHARD A. FORTHOFFER, Portland, IN transferred to WILLIAM WOODS UNIVERSITY, Fulton, MO 9/17/2012

23276-S - The Stallion, MEGGS DIPLOMAT ZANDER from CHRIS and GINA MEGGS, Riegelwood, NC transferred to JENSON SHIRES LLC, Blair, NE 12/1/2012

A-23286-M - The Mare, BOBBIE'S JUNE JEWEL from THERESA SUND, Medina, ND transferred to KARLA DeAMICIS, Conroe, TX 10/21/2012

23314-S - The Gelding, RIVERDALE TRAVELLING SALESMAN from JENNIFER CWAGENBERG, Honey Grove, TX transferred to ANTOINETTE DE PAIVA, Leona Valley, CA 3/15/2011

23321-M - The Mare, BLACK KNIGHT'S ELAINA from CRYSTAL B. SCHUMACHER, Meridan, ID transferred to JULIE LAFFERTY-DOLLEMORE, Meridian, ID 9/6/2012

23326-S - The Stallion, DWF PRAETORIAN from ASHLEY HOLTE, Meadowlands, MN transferred to REED KORPI, Middle River, MN 11/11/2012

23364-S - The Stallion, BIG LITTLE'S DEKEL from AUDREY-LYN and JERRY A. STOCKTON, Laporte, CO transferred to DAVE and BRENDA DANIHER, La Junta, CO 11/11/2012

23395-S - The Stallion, TRAIL-LIGHT ULTIMATE ADVENTURE from DANIEL TODD RIEDEL, Seville, OH transferred to KELLY J. SCHLEGEL, Millersburg, PA 10/21/2012

23402-S - The Stallion, TALLY HO DUKE'S ZEB from KIMBERLY N. PARRINGTON-MURCHISON, Rifle, CO transferred to STANLEY ARASMITH, Plainville, GA 9/1/2012

23410-S - The Stallion, JENSON DIPLOMAT PRINCE from JENSON SHIRES LLC, Blair, NE transferred to JAY FORBOESE, Murrieta, CA 9/15/2012

23411-S - The Stallion, JENSON DEFENDER STORM from JENSON SHIRES LLC, Blair, NE transferred to JAY FORBOESE, Murrieta, CA 9/15/2012

3414-S - The Stallion, MEGGS DIPLOMAT ETHAN from CHRIS MEGGS, Riegelwood, NC transferred to JENSON SHIRES LLC, Blair, NE 12/4/2012

23415-S - The Stallion, MEGGS DEFENDER TIMBER from CHRIS and GINA MEGGS, Riegelwood, NC transferred to JENSON SHIRES LLC, Blair, NE 12/4/2012

23574-M - The Mare, WANDAMERE'S TONKA GIRL from BRENDA MARTINO, Chepachet, RI transferred to JOSHUA and ELENA WILDES, West Greenwich, RI 8/23/2009

23596-M - The Mare, OX KILL SPECTACULAR DAWN from ROSEMARY MORDASKY, Stafford Springs, CT transferred to JENNY COURNOYER, Jefferson, MA 2/1/2012

23681-M - The Mare, SHIR-FOXY'S MATINEIGH from BILL TROYER, Millersburg, OH transferred to AMY B. GROSPITCH, Homerville, OH 9/29/2012

23732-M - The Mare, ROYAL VIEW LADY HOLLY from BILL TROYER, Millersburg, OH transferred to JOEL TROYER, Westcliffe, CO 9/29/2012

23787-M - The Mare, TAYSON JANETS ANGEL from MICHAEL J. TAYLOR, Whitney Point, NY transferred to CHANTAL PARADIS and ERIC PEPIN, Stormoway, Quebec CAN 8/8/2012

23862-M - The Mare, ROYAL VIEW LADY ISABELLE from BILL TROYER, Millersburg, OH transferred to JOEL TROYER, Westcliffe, CO 9/29/2012

23913-M - The Mare, SUDDEN CREEK UBBY from RUSSELL and CURTIS BRAND, Princeton, MN transferred to SHANE & JANIE GALLAGHER, Danbury, WI 7/15/2012

24036-M - The Mare, ALAN'S GRAND DUCHESS (147117) from PATSY LONG, Cody, WY transferred to KIMBERLY N. PARRINGTON-MURCHISON, Rifle, CO 9/22/2012

24061-M - The Mare, HAUGEN-HILL REGINALD KARYS from JOHN & LISA ROMEO, Franklinville, NJ transferred to ARDEN FERRELL, Ocala, FL 9/8/2012; transferred to TRACY FERRELL, Ocala, FL 11/19/2012

24079-M - The Mare, DFF THUNDERHOOF MISTY from JAMES and ANGELA STEWART, Richmond, MO transferred to JENSON SHIRES LLC, Blair, NE 9/1/2012

B-24081-M - The Mare, EVENS FARM'S BOBBIE (7/8 SHIRE) from MIKE and MONA EVENS, Cold Spring, MN transferred to JAMES M. DUNCAN, Gowrie, IA 7/26/2012

24108-M - The Mare, GLENMARY NEVA from STEPHAN M. O'DWYER, Belgrade, MT transferred to MACKENZIE SHIRES, LLC, Longmont, CO 8/23/2012

24111-M - The Mare, OX KILL WONDER WOMAN from EUGENE and VICKY McCAFFREY, Schoharie, NY transferred to ARIEL DELACROIX DAX, South Kortwright, NY 8/23/2012

24117-M - The Mare, LONG ACRE'S LADY JAN (148176)
from PATSY LONG, Cody, WY transferred to KIMBERLY N.
PARRINGTON-MURCHISON, Rifle, CO 9/22/2012

24177-M - The Mare, OX KILL WHITE DIAMOND
from BRIAN TIERNEY, Westfield, MA transferred to MELISSA
ROBIN PLOURDE, Westfield, MA 10/11/2012

24201-M - The Mare, SHIRE HALL'S LILY BELLE
from J. RICHARD HURT, West Jefferson, OH transferred to
LEIA M. HILL CLINARD, Cambridge, OH 10/7/2012

24279-M - The Mare, OX KILL WHITE MAGNOLIA
from EUGENE and VICKY McCAFFREY, Schoharie, NY
transferred to ARIEL DELACROIX DAX, South Kortwright, NY
8/23/2012

B-24280-M - The Mare, STEEGE'S FAITH (7/8 SHIRE)
from VERN E. STEEGE, Fredericksburg, IA transferred to
LESTER RONALD BAIN, SR, Verndale, MN 10/16/2012

24323-M - The Mare, ROYAL VIEW SENSATION'S GIRLEY
from BILL TROYER, Millersburg, OH transferred to CANDICE
PHILLIPS, Grafton, OH 9/29/2012

24332-M - The Mare, NEW ENGLAND CRYSTAL STAR
from JAMES M. and BETH A. KORNEGAY, New Smyrna
Beach, FL transferred to AMY WASALASKI, Frankford, WV
10/16/2011

24420-M - The Mare, ROYAL VIEW PARKED DOLLY
from BILL TROYER, Millersburg, OH transferred to ANDREW
TROYER, Millersburg, OH 9/29/2012

24421-M - The Mare, ROYAL VIEW PARK BELL
from BILL TROYER, Millersburg, OH transferred to
NATHANIEL MATHEW PICKLE, Germantown, OH 9/29/2012

24437-M - The Mare, ILLUSION FARMS THE AMERICAN WAY
from DANIEL and KATHLEEN HATHAWAY, Fryeburg, ME
transferred to MARY S.C. TIMM, Manchester, ME 9/17/2012

24451-M - The Mare, SUMMER RAIN'S DAISY
from JEANNE SCHLENK, LaPorte, TX transferred to
JENNIFER GILSON, Scottsdale, AZ 8/15/2012; transferred to COURTNEY
VALLERY, Pinetop, AZ 8/30/2012

24472-M - The Mare, AXEHOLME REMINISCE (149256)
from MELISSA SHARKEY, Krakow, WI transferred to ARDEN
A. and PATRICIA FERRELL, Ocala, FL 10/10/2012

24480-M - The Mare, RM'S ISLES FIELD JOSEY
from DANIEL and KATHLEEN HATHAWAY, Fryeburg, ME
transferred to MARY S.C. TIMM, Manchester, ME 9/17/2012

B-24495-M - The Mare, STEEGE'S HOPE (7/8 SHIRE)
from VERN E. STEEGE, Fredericksburg, IA transferred to
LESTER RONALD BAIN, SR, Verndale, MN 10/16/2012

24506-M - The Mare, RICE CREEK CHARLOTTE
from DANIEL A. HUBBELL, Traverse City, MI transferred to
KIM MARLOWE, Gaylord, MI 6/4/2012

24522-M - The Mare, TRIPLE "H" EVE'S SWEET MAGNOLIA
from TRAVIS and CASEY HOWELL, Blackfoot, ID transferred
to RENATA MALO-JUVERA , Parques del Pedregal, DF MEX
6/22/2012

24572-M - The Mare, JENSON'S DUSTY BARB
from JENSON SHIRES LLC, Blair, NE transferred to ANN R.
WHEELAND, Elkhorn, NE 4/17/2012

24581-M - The Mare, OX KILL QUEEN OF THE MAY
from EUGENE and VICKY McCAFFREY, Schoharie, NY
transferred to ARIEL DELACROIX DAX, South Kortwright, NY
8/23/2012

24583-M - The Mare, TALLY HO DUKE'S CORRIE
from KIMBERLY N. PARRINGTON-MURCHISON, Rifle, CO
transferred to JIM HUTCHINSON, Tucson, AZ 9/2/2012

24606-M - The Mare, ROYAL VIEW DIXIE
from BILL TROYER, Millersburg, OH transferred to ANDREW
TROYER, Millersburg, OH 9/29/2012

24607-M - The Mare, ROCKEY TOPS DAISY MAY
from BILL TROYER, Millersburg, OH transferred to LAUREN
SMYTH, Wakeman, OH 9/29/2012

24610-M - The Mare, ROCKEY TOPS MISTY
from BILL TROYER, Millersburg, OH transferred to
NATHANIEL MATHEW PICKLE, Germantown, OH 9/29/2012

24627-M - The Mare, HICKORY HILL ADELLE
from JANET L. LONG, Epsom, NH transferred to JENNY
COURNOYER, Jefferson, MA 4/27/2012

24640-M - The Mare, COPPER LEAF STARGAZER LILY
from VICTORIA and STEVEN MARSH, Ann Arbor, MI
transferred to JAMES and ANGELA STEWART, Richmond, MO
1/7/2007; transferred to JENSON SHIRES LLC, Blair, NE 9/2/2012

24641-M - The Mare, COPPER LEAF STELLA D'ORA
from VICTORIA and STEVEN MARSH, Ann Arbor, MI
transferred to JAMES and ANGELA STEWART, Richmond, MO
1/7/2007; transferred to JENSON SHIRES LLC, Blair, NE 9/2/2012

24651-M - The Mare, RIC SHAR'S PRINCESS ASHLEY SOPHIA
from J. RICHARD HURT, West Jefferson, OH transferred to
ROBERT W. ORR, JR., Adamsville, OH 10/7/2012

24666-M - The Mare, TALLY HO DUKE'S KYLEAH
from KIMBERLY N. PARRINGTON-MURCHISON, Rifle, CO
transferred to LYLE COOPER & KATE FOSTER, Basalt, CO
9/1/2012

24684-M - The Mare, TALLY HO DUKE'S JESSE
from KIMBERLY N. PARRINGTON-MURCHISON, Rifle, CO
transferred to VICTORIA HAUSER, Pueblo, CO 9/1/2012

24690-M - The Mare, TALLY ROSE BUD'S BEST
from LORI J. BEST, Zephyr, TX transferred to ROBERT
HODNEFIELD, Milton-Freewater, OR 10/5/2012

24691-M - The Mare, SPRINGHILL PANSY'S ROXANNE
from STEPHAN M. and JUDY L. O'DWYER, Belgrade, MT
transferred to MACKENZIE SHIRES, LLC, Longmont, CO
8/23/2012

24694-M - The Mare, ROYAL VIEW BLACK CHERRY
from BILL TROYER, Millersburg, OH transferred to
NATHANIEL MATHEW PICKLE, Germantown, OH 9/29/2012

24695-M - The Mare, ROYAL VIEW TRIXIE
from BILL TROYER, Millersburg, OH transferred to LANCE &
ASHLEY BILLINGS, Columbus, OH 9/29/2012

24696-M - The Mare, JENSON DEFENDER JANE
from JENSON SHIRES LLC, Blair, NE transferred to JAMES
and ANGELA STEWART, Richmond, MO 9/30/2012

24698-M - The Mare, MARCH WITH KATIE
from KEN KNUTH, Slayton, MN transferred to CARL L. and
CHERYL HEITKAMP, Adrian, MN 5/1/2012

THIS IS OUR STORY~ Finding the Shire Horse

By: Kathy Spencer

My husband Dave is crazy! AND... I cannot believe he pulled off this surprise, especially after 31 years of marriage and very few small surprises over the years!

Dave had our son, Justin, take me shopping ALL day on Christmas eve. Justin HATES to shop but he kept telling me that he just needed to get this one last thing for his wife... then he would take FOREVER! He had me out for over 8 hours. I was fit to be tied! (I am not a shopper!)

During this time, Dave, Nicci (Justin's wife), and a close friend, Nolan, were working all day on the Christmas Surprise!

On Christmas morning after a delicious breakfast, and all the gifts were open by the family, the last gift was given to me. It was a little box and when I opened it there was a Wells Fargo stuffed horse in it. I wondered what in the world Dave was thinking giving me a stuffed horse! There was also a card in the box that said, "To fulfill a lifelong dream, go down to the basement." I thought I was getting a bronze horse sculpture at that point. Well, down to the basement I went and there was a single black harness. (They had hidden the two work harnesses that came with Molly and Smokey and just displayed the single show harness). Dave said, "I know you have always wanted to train one of your

horses to drive." I said, "gosh, I think this harness is a little big for Sugar, (my favorite quarter horse) and we may have to return it." Dave said, "oh no, it will fit. It adjusts down to her size." Then he says, "oh look, there is another card." I pick up the card and it says, "This harness should allow you to train your horse to drive! BUT, you may need something else....Go check the trailer." So now I'm pretty sure there is going to be a cart in the trailer so off I run out to the trailer and sure enough, there IS a cart! Again, I'm thinking that Dave has either lost his mind or is pulling as fast one as the cart is far too big for one of my quarter horses. However now I think, he found a great deal on the cart and harness and we will go shopping for a draft horse together! Well, after we check out the cart, he points me to the bow still tied to the trailer and it has one last card dangling from it. I open the card and it says, "Oops! We forgot, apparently you have the cart before the horse? You had better check the barn!" Of course, now I'm so excited because I'm sure he has bought me a draft horse judging by the size of the cart and harness! I can hardly wait to get into the barn and see what kind of draft horse he bought me. I open up the barn doors and look in and I see this stunning team of black and white horses. I was in shock and laughing and crying all at the same time. My other daughter in law, Ashlee, was kind enough to document all of this on camera! It was quite a Christmas!



Now fast forward to almost a year later and we have enjoyed my Christmas gift so much. Not only do they give us tons and tons of joy, but they are the gift that just keeps giving. Family and friends are always so excited to get the chance to go out for a buggy ride with us.

In the late fall, we decided that maybe we would like to breed Molly in the spring of 2013. We get our draft horse journal each month now along with our quarter horse journal and the

pages of all of them are tattered and torn before the next set are delivered. Having bred and raised Quarter Horses for over 32 years, looking for just the right stallion for Molly is serious business for us! We happen to come across a Shire Horse Dispersal sale in the journal that is coming up that weekend. It is Royal View Farms sale in Ohio. Out of curiosity, we take a look at the website and there are two stallions and a number of stud colts coming up in the sale. It just happens that there will be online bidding available so we go online and register for the sale. We do our homework and learn a little about the horses that will be offered through the sale. We decide that we probably won't be able to afford one of the stallions but perhaps a stud colt or mare will come through that we just have to have. Well, it turns out that we bought a 13 year old stallion, Black Park Sensation (Tom) for an outstanding price. We bought him sight unseen but for some reason, it just felt right to us. Well, I will give you the reader's digest edition and let you know that we couldn't be happier with this horse! He is beautiful and has the most incredible disposition of any horse we have ever owned. He is an amazing horse in harness and we can even hitch him up with Molly when she is dead in heat and he just has a work ethic like none other. He works well with both Molly and Smokey and now my husband is ready to start shopping for another Shire that we can add to the group. He would like to be driving a 4 up before summer! We always say that our life together and with our horses have certainly provided an interesting "ride", but now we know that the "drive" is pretty fantastic too!

Tom & Molly and Dave & I, Christmas 2012



THIS IS OUR STORY~ Finding the Shire Horse

By: Leslie Donnelly

City Slickers... Supersized!

It has been a big big big year for the Donnelly family of Cardwell, Montana. They are the proud new owners of three very special drafts. Tom, a self-professed "city slicker" was born and raised in New York City. When he was young, his father- an Irish immigrant, regaled Tom with stories of his life in Ireland farming with his shire mare "Polly". Tom's romantic yearning for the Irish country side and memories of his father called to him. Tom was "never comfortable" with horses, in fact was by his own admission, afraid of horses- but the memory of his father's stories (the Irish are great story tellers) about Polly the gentle Shire pulled him into visiting with the "gentle giants". The connection was immediate and deep. He and his wife Leslie are now the loving owners of three big beautiful Shires.

Last winter, the Donnelly's first bought *Quinte Victoria* "Vicky" from Leanne Hogeland of Big Sky Shires, in Glendive Montana. They purchased Vicky in foal to *Illusion Farms Tuff's Hedeman*. Tom was insistent on imprinting the new foal. He spent a week camped out at the Big Sky Shires Stables waiting for the big day. He passed the time grooming horses, feeding, cleaning stalls and helping Leanne with the 20+ shires at her farm... and getting Vicky used to having him around her. When Vicky finally foaled (five days late) Tom was right there at the magic moment and began the imprinting process with his new filly... aptly named *Polly*. The experience was an epiphany for Tom - in his own words, he felt profoundly joined to the "little grey horse" and from that moment on he trusted her completely...

While The Donnelly's were waiting at their farm in Montana for the home-coming of Vicky and baby Polly, they met another special horse, *Fred*. Fred is a 6 year old Clyde/Shire gelding bred by The Barneys of Lewisville Idaho. Fred's current owner was Corie Downey of Diamond K Ranch and Carriages, in Whitehall, Montana. Fred is a very social and friendly horse, and perfectly trained to drive. The Donnelly's instantly fell in love with him. There was only one problem... Fred wasn't for sale. Corie generously shared her time, talent, and tack, and taught the Donnelly's how to drive... and eventually they coaxed Corie into selling Fred.

As if Tom wasn't busy enough with three new horses, he spent the summer building a custom wagon for Leslie and Fred. He decided to purchase a new Shiloh chassis, and then built the rest of the wagon in hardwood by hand. They spent the rest of the year taking their grandchildren, and neighborhood kids on wagon rides on their farm, newly minted as "Shamrock Shires".

The Donnelly family is looking forward to spring, with plans for continuing their training with Polly, re-breeding Vicky to *Illusion Farms Tuff's Hedeman* (Doc) and finding a team mate for Fred!



Share your story with us!

Submit to:

Leanne Hoagland
bsshires@midrivers.com

2013 Show Schedule:

Note: Qualifying shows for the *All North American Contest* are coded as follows:

AA show (1st – 4th), A show (1st – 3rd), B show (1st or 2nd), C show (1st only)

~~~ MARK YOUR CALENDARS ~~~

THE 2013 NATIONAL SHIRE SHOW WILL BE HELD AT



**Iowa State Fair**  
www.iowastatefair.org

Pictured Gladwin Jubilee Reign.  
2009 & 2012 ASHA National Champion.  
Owned by Kim Smith. Picture by Stacie Lynch.

**DES MOINES, IOWA NATIONAL SHOW AUGUST 11-13, 2013**

**Shows**  
Sunday, August 11th at 6 pm  
Monday, August 12th at 8 am & 6 pm  
Tuesday, August 13th at 8 am & 5 pm

**Show Coordinator**  
Danelle Kinney / Ph. (651) 380-9600 / E. haugenhill@hotmail.com

LIKE US ON  
**facebook**  
facebook.com/iowashireshow

First time national/regional exhibitors will receive a new show halter. \*ONE PER FAMILY/FARM

*Please consider donating or sponsoring a class. If a specific class interests you instead, please inquire to see the possibilities.*

The full ASHA show schedule details will be listed in the spring issue of the Bulletin

In the mean time, for information on ASHA shows, visit [www.shirehorse.org](http://www.shirehorse.org) and click on 'Shows' and then 'Upcoming Shows' on the menu and scroll down to the show you are interested in.

Show results from 2012 are also listed under the 'Shows' menu.

MANY THANKS TO ALL SHIRE OWNERS WHO TOOK THE TIME AND EFFORT TO GET THEIR ANIMALS TO THE SHOWS IN 2012. THERE ARE SOME OUTSTANDING SHIRES OUT THERE PROMOTING THE BREED!

## \*NOTICE\*

The Show Committee is re-evaluating the existing show program to determine if changes should be made. Any suggestions or comments on shows from members would be welcome. Please contact the Chair or any committee members with your thoughts.



# 2012/ 2013 Printing of Breeder's Brochure a Success

## THANK YOU!!

To this edition's advertisers:

Ayrshire Farm – The Learner Family, VA  
 Big Little Shires – The Stockton Family, CO  
 Big Sky Shires – The Hoagland Family, MT  
 Gentle Giant Ranch – The Anderson Family, Canada  
 Haugen-Hill Shires – The Kinney Family, MN  
 Huska Millennium Acres – The Naef Family, CA  
 Illusion Farms – The Hathaway Family, ME  
 Jenson Shires – The Jenson Family, NE  
 Kallisto Shires – The Hauser Family, CO  
 Madison Shires – The Bobo Family, MS  
 MacKenzie Shires – The MacKenzie Family, CO  
 Midnight Star Breeders – The McLin Family, CO  
 North Country Shires – The O'dell Family, NY  
 Ox Kill Farm – The McCaffrey Family, NY  
 Rising Moose Stables – The Sorrell Family, VT  
 Rivendale Shires – The Dunning Family, CO  
 Royal Knight Shires – The Wade Family, VA  
 Shady Grove Farms – The Temaat Family, KS  
 Shire Power Farm – The Forthofer Family, IN  
 Silver Drache Farm – The Eppley Family, IN  
 Sudden Creek Shires – The Knuth Family, MN  
 Tally Ho Shires - The Parrington & Murchison Families, CO  
 Trail Light Farms – The Riedel Family, OH  
 Wild Iris Farms – The Read and Jaffrey Families, ME

**Check out or Download a copy from:**

<http://www.shirehorse.org/BreedersBooklet.pdf>

**Call our office for Hard Copies  
 Hard copies available for  
 shows, expos and fairs.  
 Send your information to the  
 office to get your copies!**

## WELCOME

### NEW MEMBERS

Thank You for Supporting the Shire!

Z. Bernard Block  
 4 E Old Rt 6  
 Hampton CT 06247

Jim Duncan  
 P.O. Box 247  
 Gowrie IA 50543

Jennifer Gilson  
 4015 East Cactus Road  
 Phoenix AZ 85032

Jessica Mendel  
 40 Summer Street  
 Salem MA 01970

Robert W. Orr, Jr.  
 6630 Doverspike Road  
 Adamsville OH 43802

We welcome all our new members to our Shire Family! Thank you! Please feel free to participate in our "Meet the Members" or "Member's News"

Melissa Robin Plourde  
 140 Wyben Road  
 Westfield MA 01085

Richard Shaw  
 4600 Hillside Avenue  
 Norco CA 92860

Russell V. Spicer  
 1057 Camp Grove Road  
 Sparland IL 61565

Mary Straw Cook Timm  
 421 Pond Road  
 Manchester ME 04351

Elena Wildes  
 53 Arthur Richmond Road  
 West Greenwich RI 02817

### As I See It:

Have a concern or problem and would like to share it with the membership? Here is the column for you. The following criteria, adopted at the 2005 Annual ASHA Meeting, must be followed.

- 1) All copy must be camera ready.
- 2) No profanity.
- 3) All copy must be 1/2 page or less inclusive of signature. 1/2 page is defined as 5" X 6".
- 4) Original Signature from the person submitting it must be included.
- 5) If anyone person or position is mentioned– written permission from that person must accompany the submission.
- 6) A member may submit one article per newsletter. This includes articles signed by multiple members.
- 7) The editor may decide not to print a submission.

## News from the American Shire Horse Educational Foundation (ASHEF)

The Pedigree Analysis project with Dr. Rebecca Splan of Virginia Tech MARE Center in Middleburg, VA has been completed. A draft of the scientific article summarizing the results is in the review process for the *Journal of Animal Genetic Resources*. Dr. Splan will also provide a less technical version of the results for the ASHEF and ASHA websites and a future issue of the Member's Bulletin. A talk by Dr. Splan at one of our future ASHA annual meeting education days is still in the plans.

ASHEF provided funding for the following projects in 2012: Continuation of the pedigree analysis project, Funding for Marion Young's clinic at the 2012 ASHA Annual Meeting Education Day and splitting costs of the 2012 trade show expenses with ASHA. The ASHEF board has also approved funding for travel expenses for Brian Coleman, who will be giving a clinic at the 2013 Annual Meeting Education Day.

The Foundation will be setting up an auction for a donated 1912 ASHA National Show Trophy (Dan Patch Trophy) as a fund raiser. Details on the trophy and the auction procedure will be sent to all ASHA members when they are finalized. ASHEF sincerely thanks Gene and Vicky McCaffrey who purchased the trophy and generously donated it for the fund raiser.

If you have any questions about the ASHEF or suggestions for fund raising or for Shire related educational projects to fund, please contact any board member.

President: Marcia Mayeda - [marciamayeda@verizon.net](mailto:marciamayeda@verizon.net)  
Vice President: Paul Tyrrell - [fourinhand@gmail.com](mailto:fourinhand@gmail.com)

Danelle Kinney - [haugenhill@hotmail.com](mailto:haugenhill@hotmail.com)  
 Gene McCaffrey - [oxkill@capital.net](mailto:oxkill@capital.net)

Treasurer: Ken Knuth - [knuth@frontiernet.net](mailto:knuth@frontiernet.net)

Karla Stoner - [bloomforge@peoplepc.com](mailto:bloomforge@peoplepc.com)

Secretary: Jan Baumgras - [jbaumgras@meijergardens.org](mailto:jbaumgras@meijergardens.org)  
 Clark Jenson - [clarkjenson@abnebraska.com](mailto:clarkjenson@abnebraska.com)

Dawn Wikel - [shires99@msn.com](mailto:shires99@msn.com)

## All-North American Update, Winter Bulletin

The All-North American Committee would like to send out a huge thank you to the participants!! Thirty-seven qualified nominations were entered into this year's contest.

As I write this, the ballot has been created, reviewed, printed and mailed to the Draft Horse Journal. In advance, the judges' mailing addresses are sent the DHJ, so that they can prepare the packets prior to the ballots arrival. This process has been working well and makes the Contest run seamless.

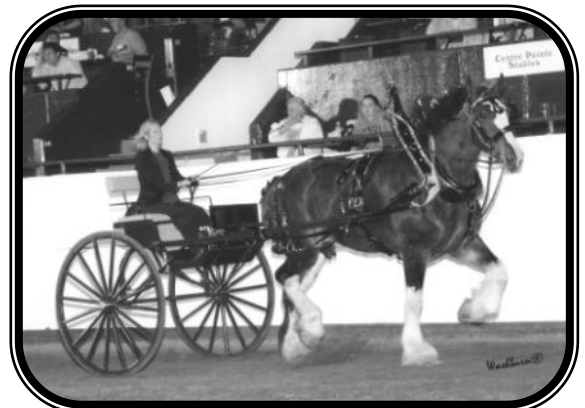
The Draft Horse Journal expects judges to return their votes by January 18th, 2013. After that time, the results will be tabulated by the DHJ and final standings will be sent to the Committee for posting. The DHJ will publish the winners in their Spring Issue. Stay tuned for results.

Please forward new shows that should be considered for the Contest to any of the Committee members by March 1<sup>st</sup>, 2013. Details for the 2013 All-North American Contest and qualifying shows will be coming early springtime!

Thank you again for your support!

Submitted By,

***Danelle Kinney***  
 All-North American Committee chair



# **AS I SEE IT:**

While doing my yearly review of the SHS 2011 studbook, which I have been doing since 1980, I noted a glaring inconsistency and filed a complaint with the SHS concerning the entry of Hillmore Double Trouble 47489. This stallion was notified in the 2009 studbook as a BAY colt sired by a black stallion and out of a bay mare. This horse now shows up in the 2011 studbook as a GREY. As we know, genetically this is not possible. It is widely known in order to produce a grey; the sire and /or the dam must be grey. That not being the case; if the foal is not black, bay or brown; it is a ROAN!

I have referred the SHS to the website - horsecolor.com - which states " Since grey is dominant to non-grey, ALL grey horses MUST have at least on GREY parent. GREY CAN- NOT skip generations." and Roans have dark heads and points (the white hair is mixed in on the body only)." I contend the photo of HDT on page 9 of the HHW Summer 2012 article is that of a roan and not a grey.

I also referred the SHS to a UK genetics lab offering a DNA test, horsedna.co.uk for \$40.00 with a turnaround in 5-7 business days. I also offered to pay for the test. One would think the SHS would use the technology available to protect the Shire studbook, the breed and the breeders!

The Editing Committee initially met and decided to disregard the SHS Appendix B- Standard of Points for Shire-Stallions- Colour "He must not be roan or chestnut." on page 215 in the 2011 SHS studbook and allowed HDT to stand for the 2012 breeding season. In effect "the immaculate deception!" The committee met again on September 4 to consider this issue, as of this letter I have not been made aware of any decision.

Vern Stark  
[skfinc@yahoo.com](mailto:skfinc@yahoo.com)

# **MEMBER NEWS:**

I wanted to boast about my shire sporthorse mare Cayenne. I am an adult amateur dressage rider and have been able to return to the sport of horses after a tragic riding/jumping accident as a 16 year old which left me with no feeling or reflexes in my right leg. Finding the right equine partner has been the key to my success as a para equestrian. Finding Cayenne, an amazing shire/TB cross, opened the door again for my riding.

On September 30th Cayenne and I showed at the Jean Kimball memorial show through the Charles River Dressage Association. We rode the FEI grade II individual championship and FEI grade II novice para equestrian tests in front of USDF judge Debbie Baldelli. We scored a 72.6 and 74.5 respectfully, winning GRAND Champion and RESERVE Grand Champion for the entire show! We earned comments such as "nice obedient horse", "nice horse and rider combo". Cayenne out-performed the classical warmbloods, showing exactly what her breed is capable of achieving.

At 19 years of age Cayenne continues to improve. For me she is a blessing. When the time comes to retire my partner and friend I will most definitely be looking for another shire.

Holly Richards  
810 Stevens Street  
Marlborough, MA 01752



\*\*\*\*\*  
**Do You have Address – Email changes?**  
\*\*\*\*\*

*To make sure your service is uninterrupted,  
Please be sure to inform the ASHA office  
Of any changes in postal address, email address  
Or phone number*

**Office hours:**

9am to 3pm CDT Tuesday, Wednesday, & Thursdays.

**Myrna Rhinehart Secretary**

American Shire Horse Association

P.O. Box 408 ~ Lake Delton, WI 53940

Phone: 888-302-6643

email: [secretary@shirehorse.org](mailto:secretary@shirehorse.org)

\*\*\*\*\*

**Ohio State Fair  
Regional Show  
August 2, 2012 - August 3, 2012  
Halter Judge: Ross Honsberger  
Hitch Judge: Mark Sparrow  
Total Halter Horses Shown: 10**

**Stallions - 4 yrs and over (1)**

Mufasa Andrea Bradley-Stutz Westfield, IN

**Senior Champion Stallion**

Mufasa Andrea Bradley-Stutz Westfield, IN

**Stallion Foal (1)**

Trail-Light Ultimate Adventure Daniel Todd Riedel Seville, OH

**Junior Champion Stallion**

Trail-Light Ultimate Adventure Daniel Todd Riedel Seville, OH

**Grand Champion Stallion**

Mufasa Andrea Bradley-Stutz Westfield, IN

**Reserve Grand Champion Stallion**

Trail-Light Ultimate Adventure Daniel Todd Riedel Seville, OH

**Best American Bred Stallion (1)**

Mufasa Andrea Bradley-Stutz Westfield, IN

**Best Ohio Owned Shire Stallion (1)**

1 Trail-Light Ultimate Adventure Daniel Todd Riedel Seville, OH

**Broodmare – 4 yrs and over (1)**

1 Trail-Light Meggs Daniel Todd Riedel Seville, OH

**Yeld Mare – 4 yrs and over (4)**

1 Ox Kill April Surprise Daniel Todd Riedel Seville, OH

2 Shire Hall's Lily Belle J. Richard Hurt West Jefferson, OH

3 Trail-Light Mystical Star Daniel Todd Riedel Seville, OH

4 Ricshar Princess Bright Star J. Richard Hurt West Jefferson, OH

**Senior Champion Mare**

1 Ox Kill April Surprise Daniel Todd Riedel Seville, OH

**Reserve Senior Champion Mare**

Shire Hall's Lily Belle J. Richard Hurt West Jefferson, OH

**Mares – 2 yrs and under 3 (1)**

Trail-Light Radiant Surprise Sarka Velka-Bozeman Moores Hill, IN

**Mares – 1 yr and under 2 (1)**

Ric Shar's Princess Ashley Sophia Jr. J. Richard Hurt West Jefferson, OH

Ric Shar's Princess Ashley Sophia J. Richard Hurt West Jefferson, OH

**Reserve Champion Jr. Mare**

Trail-Light Radiant Surprise Sarka Velka-Bozeman Moores Hill, IN

**Grand Champion Mare**

Ox Kill April Surprise Daniel Todd Riedel Seville, OH

**Reserve Champion Mare**

Shire Hall's Lily Belle J. Richard Hurt West Jefferson, OH

**Best American Bred Mare**

Ox Kill April Surprise Daniel Todd Riedel Seville, OH

**Best Ohio Owned Shire Mare**

Ox Kill April Surprise Daniel Todd Riedel Seville, OH

**Registered Geldings, any age (1)**

1 Trail-Light He's Totally Mine Daniel Todd Riedel Seville, OH

**Grand Champion Gelding**

Trail-Light He's Totally Mine Daniel Todd Riedel Seville, OH

**Mare and Foal (1)**

1 Trail-Light Meggs Daniel Todd Riedel Seville, OH

**Produce of Dam (1)**

1 Trail-Light Mystical Star Daniel Todd Riedel Seville, OH

**Get of Sire (2)**

1 Tori's Nigel Gold of Trail-Light Daniel Todd Riedel Seville, OH

2 Black Forest Windchime John Daniel Todd Riedel Seville, OH

**Youth Showmanship, Under 15 yrs (4)**

1 Shire Hall's Lily Belle J. Richard Hurt - Hannah Maggard West Jefferson, OH

2 Ric Shar's Princess Ashley Sophia J. Richard Hurt - Taylor Maggard West Jefferson, OH

4 Ricshar Princess Bright Star J. Richard Hurt - Kaylee Shepard West Jefferson, OH

**Youth Showmanship, 15 to 21 yrs (5)**

1 Trail-Light Mystical Star Daniel Todd Riedel - Lauren Smyth Seville, OH

2 Ric Shar's Princess Ashley Sophia J. Richard Hurt - Elizabeth Lefavour West Jefferson, OH

4 Trail-Light Meggs Daniel Todd Riedel - MacKenzie Harrold Seville, OH

**Clyde/Shire Under Saddle - Walk/Trot (2)**

1 Mufasa Andrea Bradley-Stutz Westfield, IN

2 Trail-Light Meggs Daniel Todd Riedel - MacKenzie Harrold Seville, OH

**Hitch Class - Youth Cart (4)**

1 Trail-Light Mystical Star Daniel Todd Riedel - Lauren Smyth Seville, OH

4 Shire Hall's Lily Belle J. Richard Hurt - Hannah Maggard West Jefferson, OH

**Hitch Class - Clyde/Shire Pleasure Driving (1)**

1 Trail-Light Meggs Daniel Todd Riedel Seville, OH

**Hitch Class - Clyde/Shire Pair Youth Driver (1)**

1 Hurt entry Taylor Maggard West Jefferson, OH

**Hitch Class - Shire Open S/G/M Cart Driven by a Gentleman (2)**

1 Ox Kill April Surprise Daniel Todd Riedel Seville, OH

2 Shire Hall's Lily Belle J. Richard Hurt - Scott Weldy West Jefferson, OH

Following Pictures are from The Colorado Draft Horse Classic- Submitted by photographer Megan Zapel.



**Hitch Class – Shire Open S/G/M Cart Driven by a Lady (2)**

|                             |                                      |                    |
|-----------------------------|--------------------------------------|--------------------|
| 1 Trail-Light Mystical Star | Daniel Todd Riedel – Emily Cullison  | Seville, OH        |
| 2 Shire Hall's Lily Belle   | J. Richard Hurt – Elizabeth Lefavour | West Jefferson, OH |



**Hitch Class – Shire Registered S/G/M Cart Driven by a Man or Lady (2)**

|                             |                                     |             |
|-----------------------------|-------------------------------------|-------------|
| 1 Trail-Light Mystical Star | Daniel Todd Riedel – Emily Cullison | Seville, OH |
| 2 Ox Kill April Surprise    | Daniel Todd Riedel                  | Seville, OH |

**Colorado Draft Horse Classic  
Regional Show  
August 5, 2012**

Judge: Ralph (Bud) Walsh Berthoud, CO  
Total Halter Horses: 17

**Points Mare Foal (2)**

|                             |                         |                |
|-----------------------------|-------------------------|----------------|
| 1 Big Sky Tuff's April Fool | Brett & Leanne Hoagland | Glendive, MT   |
| 2 Midnight Star's Helene    | Brit C. & Sharon McLin  | New Castle, CO |

**Mare 1 year old (1)**

|                          |                                  |           |
|--------------------------|----------------------------------|-----------|
| 1 Tally Ho Duke's Kyleah | Kimberly N. Parrington-Murchison | Rifle, CO |
|--------------------------|----------------------------------|-----------|

**Mare 2 years old (1)**

|                           |                       |              |
|---------------------------|-----------------------|--------------|
| Summer Rain's Easter Lily | MacKenzie Shires, LLC | Longmont, CO |
|---------------------------|-----------------------|--------------|

**Junior Champion Mare**

|                           |                       |              |
|---------------------------|-----------------------|--------------|
| Summer Rain's Easter Lily | MacKenzie Shires, LLC | Longmont, CO |
|---------------------------|-----------------------|--------------|

**Reserve Junior Champion Mare**

|                           |                         |              |
|---------------------------|-------------------------|--------------|
| Big Sky Tuff's April Fool | Brett & Leanne Hoagland | Glendive, MT |
|---------------------------|-------------------------|--------------|

**Yeld Mare 3 years and over (3)**

|                                 |                         |                |
|---------------------------------|-------------------------|----------------|
| 1 Big Sky All That Jazz         | Brett & Leanne Hoagland | Glendive, MT   |
| 2 Tally Ho BK's Lady Emerill    | John Parrington         | Rifle, CO      |
| 3 Midnight Star's Queen Amadala | Brit C. & Sharon McLin  | New Castle, CO |

**Brood Mares 3 years and over (2)**

|                             |                        |                |
|-----------------------------|------------------------|----------------|
| 1 Tamarack Graceful Emma    | Michelle Simono        | Silt, CO       |
| 2 Gaydon Tejas Special Lady | Brit C. & Sharon McLin | New Castle, CO |

**Champion Senior Mare**

|                       |                         |              |
|-----------------------|-------------------------|--------------|
| Big Sky All That Jazz | Brett & Leanne Hoagland | Glendive, MT |
|-----------------------|-------------------------|--------------|

**Reserve Senior Champion Mare**

|                        |                 |          |
|------------------------|-----------------|----------|
| Tamarack Graceful Emma | Michelle Simono | Silt, CO |
|------------------------|-----------------|----------|

**Grand Champion Mare**

|                       |                         |              |
|-----------------------|-------------------------|--------------|
| Big Sky All That Jazz | Brett & Leanne Hoagland | Glendive, Mt |
|-----------------------|-------------------------|--------------|

**Reserve Champion Mare**

|                           |                       |              |
|---------------------------|-----------------------|--------------|
| Summer Rain's Easter Lily | MacKenzie Shires, LLC | Longmont, CO |
|---------------------------|-----------------------|--------------|

**Stallion Foal (1)**

|                                 |                        |                |
|---------------------------------|------------------------|----------------|
| 1 Midnight Star's Tally Horatio | Brit C. & Sharon McLin | New Castle, CO |
|---------------------------------|------------------------|----------------|

**Stallion 1 year old (2)**

|                      |                                |              |
|----------------------|--------------------------------|--------------|
| 1 Big Little's Dekel | Audrey-Lyn & Jerry A. Stockton | Laporte, CO  |
| 2 Tally Ho Dexter    | MacKenzie Shires, LLC          | Longmont, CO |

**Junior Champion Stallion**

|                    |                                |             |
|--------------------|--------------------------------|-------------|
| Big Little's Dekel | Audrey-Lyn & Jerry A. Stockton | Laporte, CO |
|--------------------|--------------------------------|-------------|

**Reserve Champion Junior Stallion**

|                 |                       |              |
|-----------------|-----------------------|--------------|
| Tally Ho Dexter | MacKenzie Shires, LLC | Longmont, CO |
|-----------------|-----------------------|--------------|

**Stallions 3 years and over (1)**

|                               |                         |              |
|-------------------------------|-------------------------|--------------|
| 1 Illusion Farms Tuff Hedeman | Brett & Leanne Hoagland | Glendive, MT |
|-------------------------------|-------------------------|--------------|

**Senior Champion Stallion**

|                             |                         |              |
|-----------------------------|-------------------------|--------------|
| Illusion Farms Tuff Hedeman | Brett & Leanne Hoagland | Glendive, MT |
|-----------------------------|-------------------------|--------------|

**Grand Champion Stallion**

|                    |                                |             |
|--------------------|--------------------------------|-------------|
| Big Little's Dekel | Audrey-Lyn & Jerry A. Stockton | Laporte, CO |
|--------------------|--------------------------------|-------------|

**Reserve Champion Stallion**

|                 |                       |              |
|-----------------|-----------------------|--------------|
| Tally Ho Dexter | MacKenzie Shires, LLC | Longmont, CO |
|-----------------|-----------------------|--------------|

**Geldings 3 years old and under (1)**

|                              |                        |                |
|------------------------------|------------------------|----------------|
| Midnight Star's Easter Glory | Brit C. & Sharon McLin | New Castle, CO |
|------------------------------|------------------------|----------------|

**Geldings 4 years and over (3)**

|                               |                                  |              |
|-------------------------------|----------------------------------|--------------|
| Tally Ho BK's Tristan         | Kimberly N. Parrington-Murchison | Rifle, CO    |
| Tally Ho BK's Triple Platinum | Victoria Hauser                  | Pueblo, CO   |
| Tally Ho Tuff's Zorro         | Casey MacKenzie                  | Longmont, CO |

**Grand Champion Gelding**

|                       |                                  |           |
|-----------------------|----------------------------------|-----------|
| Tally Ho BK's Tristan | Kimberly N. Parrington-Murchison | Rifle, CO |
|-----------------------|----------------------------------|-----------|

**Reserve Champion Gelding**

|                              |                        |                |
|------------------------------|------------------------|----------------|
| Midnight Star's Easter Glory | Brit C. & Sharon McLin | New Castle, CO |
|------------------------------|------------------------|----------------|

**Western Riding Class (2)**

|                              |                               |              |
|------------------------------|-------------------------------|--------------|
| 1 Tally Ho Tuff's Zorro      | Casey MacKenzie               | Longmont, CO |
| 2 Tally Ho BK's Lady Emerill | John Parrington – Lisa Lowman | Rifle, CO    |

**English Riding (1)**

|                         |                 |              |
|-------------------------|-----------------|--------------|
| 1 Tally Ho Tuff's Zorro | Casey MacKenzie | Longmont, CO |
|-------------------------|-----------------|--------------|

**Hitch Class – Shire Mare Cart (3)**

|                              |                                         |              |
|------------------------------|-----------------------------------------|--------------|
| 1 Big Sky All That Jazz      | Brett & Leanne Hoagland                 | Glendive, MT |
| 2 Tally Ho BK's Lady Emerill | John Parrington – Lisa Lowman           | Rifle, CO    |
| 3 Summer Rain's Easter Lily  | MacKenzie Shires, LLC – Michelle Simono | Longmont, CO |

**Hitch Class – Shire Stallion or Gelding Cart (3)**

|                                 |                               |              |
|---------------------------------|-------------------------------|--------------|
| 1 Tally Ho BK's Triple Platinum | Victoria Hauser – Kate Foster | Pueblo, CO   |
| 2 Tally Ho Bentley              | Kim Parrington-Murchison      | Rifle, CO    |
| 3 Illusion Farms Tuff Hedeman   | Brett & Leanne Hoagland       | Glendive, MT |

**Hitch Class – Draft Singles Junior To Drive (2)**

|                                 |                                 |            |
|---------------------------------|---------------------------------|------------|
| 1 Tally Ho BK's Triple Platinum | Victoria Hauser – Jesse Wagoner | Pueblo, CO |
|---------------------------------|---------------------------------|------------|



**Addison County Fair  
Regional Show  
August 10, 2012 - August 11, 2012  
Total Halter Horses Shown: 13**

Following Pictures are from The NY State Fair

**Mares – 1 yr and under 2 (4)**

- 1 Westwind Grand Emily
- 2 Hickory Hill Adelle
- 3 Ox Kill Bonny Gean
- 4 Hickory Hill Sybil

- Kim Smith – Donald Lowes
- Janet L. Long – Jenny Cournoyer
- Eugene & Vicky McCaffrey
- Turie & Michael Sorrell

- Burlington, ON
- Epsom, NH
- Schoharie, NY
- Concord, VT

**Junior Champion Mare**

Westwind Grand Emily

Kim Smith – Donald Lowes

Burlington, ON

**Reserve Junior Champion Mare**

Hickory Hill Adelle

Janet L. Long – Jenny Cournoyer

Epsom, NH

**Broodmare – 4 years and over (1)**

1 Gladwin Jubilee Reign

Kim Smith – Donald Lowes

Burlington, ON

**Mares – 3 yrs and under 4 (2)**

- 1 Hickory Hill Hannah
- 2 Squantum Samantha

- Turie & Michael Sorrell
- Jenny Cournoyer

- Concord, VT
- Jefferson, MA

**Yeld Mare – 4 yrs and over (3)**

- 1 Ox Kill Spectacular
- 2 Jenson’s Timber Amber
- 3 Jenson’s Diplomat Katrina

- Eugene & Vicky McCaffrey
- Terry Mickols & Robert Nunes
- Terry Mickols & Robert Nunes

- Schoharie, NY
- Stoneham, ME
- Stoneham, ME

**Senior Champion Mare**

Gladwin Jubilee Reign

Kim Smith – Donald Lowes

Burlington, ON

**Reserve Senior Champion Mare**

Hickory Hill Hannah

Turie & Michael Sorrell

Concord, VT

**Grand Champion Mare**

Gladwin Jubilee Reign

Kim Smith – Donald Lowes

Burlington, ON

**Reserve Grand Champion Mare**

Westwind Grand Emily

Kim Smith – Donald Lowes

Burlington, ON

**Supreme Mare – All Breeds**

Gladwin Jubilee Reign

Kim Smith – Donald Lowes

Burlington, ON

**Hitch Class – Clyde/Shire Ladies Cart (2)**

1 Ox Kill Spectacular

Eugene & Vicky McCaffrey - Erin McCaffrey Schoharie, NY

2 Jenson’s Diplomat Katrina

Terry Mickols & Robert Nunes – Robert Nunes Stoneham, ME

**Hitch Class – Clyde/Shire Gentleman’s Cart (1)**

1 North Country’s Sir Nolan

Terry Mickols & Robert Nunes – Robert Nunes Stoneham, ME

**Draft Horse Under Saddle - Junior (1)**

1 Ox Kill Spectacular

Eugene & Vicky McCaffrey – Alexis Bleau Schoharie, NY

**Youth Showmanship 8-13 years (8)**

2 Ox Kill Spectacular

Eugene & Vicky McCaffrey – Alexis Bleau

3 Gladwin Jubilee Reign

Kim Smith – Sarah Lowes Burlington, ON

**Youth Showmanship 14-19 years (6)**

4 Westwind Grand Emily

Kim Smith – Donna Lowes Burlington, ON

**Geldings – 3 years and over (1)**

1 North Country’s Prince of Stoneham

Terry Mickols & Robert Nunes Stoneham, ME

**Grand Champion Gelding**

North Country’s Prince of Stoneham

Terry Mickols & Robert Nunes Stoneham, ME

**Stallions – 3 yrs and over (1)**

Black Park Chancellor

Jenny Cournoyer Jefferson, MA

**Senior Champion Stallion**

Black Park Chancellor

Jenny Cournoyer Jefferson, MA

**Stallion Foal (1)**

North Country’s Silver Bullet

Terry Mickols & Robert Nunes Stoneham, ME

**Junior Champion Stallion**

North Country’s Silver Bullet

Terry Mickols & Robert Nunes Stoneham, ME

**Grand Champion Stallion**

Black Park Chancellor

Jenny Cournoyer Jefferson, MA

**Reserve Grand Champion Stallion**

North Country’s Silver Bullet

Terry Mickols & Robert Nunes Stoneham, ME

**Supreme Stallion – All Breeds**

Black Park Chancellor

Jenny Cournoyer Jefferson, MA

**Get of Sire (3)**

1 Isles Field Danny Boy

Michael & Turie Sorrell Owego, NY

2 Metheringham Upton Isaac

Eugene & Vicky McCaffrey Schoharie, NY

3 North Country’s New King

Terry Mickols & Robert Nunes Stoneham, ME

**Produce of Dam (1)**

1 Brigadoon Silver Lace

Terry Mickols & Robert Nunes Stoneham, ME

**Hitch Class – Clyde/Shire Ladies Pairs (2)**

1 Ox Kill Farm

Erin McCaffrey Schoharie, NY

2 North Country Shires

Terry Nunes Stoneham, ME

**Hitch Class – Youth Pairs 8-13 years (6)**

1 Ox Kill Farm

Alexis Bleau Schoharie, NY

**Hitch Class – Youth Pairs 14-19 years (3)**

2 Ox Kill Farm

Kate Wilson Schoharie, NY

**Hitch Class – Mare Cart (3)**

3 North Country Shires

Bob Nunes Stoneham, ME

**Hitch Class – Shire Pair (2)**

1 Ox Kill Farm

Erin McCaffrey Schoharie, NY

2 North Country Shires

Bob Nunes Stoneham, ME

**Hitch Class – Clyde/Shire Registered Mare Cart (2)**

1 Ox Kill Spectacular

Eugene & Vicky McCaffrey – Erin McCaffrey Schoharie, NY

2 Jenson’s Timber Amber

Terry Mickols & Robert Nunes Stoneham, ME



**Skowhegan Fair  
Regional Show  
August 17, 2012**

*Skowhegan Fair located in Skowhegan Maine*

*Show Superintendent: Hope Ricker*

*Judge: Jeff Fiske*

*Total Horses shown in halter: 11*

|                                                 |                              |               |
|-------------------------------------------------|------------------------------|---------------|
| <b><u>Stallions – 3 years and over</u></b>      |                              |               |
| 1 Black Park Chancellor                         | Jenny Cournoyer              | Jefferson, MA |
| <b><u>Senior Champion Stallion</u></b>          |                              |               |
| Black Park Chancellor                           | Jenny Cournoyer              | Jefferson, MA |
| <b><u>Stallion Foal</u></b>                     |                              |               |
| 1 North Country's Prince of Stoneham            | Terry Mickols & Robert Nunes | Stoneham, ME  |
| <b><u>Junior Champion Stallion</u></b>          |                              |               |
| North Country's Prince of Stoneham              | Terry Mickols & Robert Nunes | Stoneham, ME  |
| <b><u>Grand Champion Stallion</u></b>           |                              |               |
| Black Park Chancellor                           | Jenny Cournoyer              | Jefferson, MA |
| <b><u>Reserve Champion Stallion</u></b>         |                              |               |
| North Country's Prince of Stoneham              | Terry Mickols & Robert Nunes | Stoneham, ME  |
| <b><u>Mares – 3 years and under 4 (2)</u></b>   |                              |               |
| 1 Hickory Hill Hannah                           | Turie & Michael Sorrell      | Concord, VT   |
| 2 Squantum Samantha                             | Jenny Cournoyer              | Jefferson, MA |
| <b><u>Broodmares – 4 years and over (2)</u></b> |                              |               |
| 1 Miller's Darlin' Clementine of Rivercrof      | Joe & Judy Miller            | Starks, ME    |
| 2 Forest Hills Dallas                           | Joe & Judy Miller            | Starks, ME    |
| <b><u>Senior Champion Mare</u></b>              |                              |               |
| Hickory Hill Hannah                             | Turie & Michael Sorrell      | Concord, VT   |
| <b><u>Reserve Senior Champion Mare</u></b>      |                              |               |
| Squantum Samantha                               | Jenny Cournoyer              | Jefferson, MA |
| <b><u>Mares – 1 year and under 2 (2)</u></b>    |                              |               |
| 1 Hickory Hill Adelle                           | Jenny Cournoyer              | Jefferson, MA |
| 2 Hickory Hill Sybil                            | Turie & Michael Sorrell      | Concord, VT   |
| <b><u>Mares – 2 years and under 3 (2)</u></b>   |                              |               |
| 1 Illusion Farms Winston's Debutante            | Daniel & Kathleen Hathaway   | Fryeburg, ME  |
| 2 Millers Sweet Betsy of Rivercroft             | Joe & Judy Miller            | Starks, ME    |
| <b><u>Junior Champion Mare</u></b>              |                              |               |
| Hickory Hill Adelle                             | Jenny Cournoyer              | Jefferson, MA |
| <b><u>Reserve Junior Champion Mare</u></b>      |                              |               |
| Hickory Hill Sybil                              | Turie & Michael Sorrell      | Concord, VT   |
| <b><u>Grand Champion Mare</u></b>               |                              |               |
| Hickory Hill Hannah                             | Turie & Michael Sorrell      | Concord, VT   |
| <b><u>Reserve Champion Mare</u></b>             |                              |               |
| Squantum Samantha                               | Jenny Cournoyer              | Jefferson, MA |
| <b><u>Geldings – 2 and 3 yrs old (1)</u></b>    |                              |               |
| 1 North Country's Silver Bullet                 | Terry Mickols & Robert Nunes | Stoneham, ME  |

***New York State Fair***

***Regional Show***

***August 28, 2012 - September 3, 2012***

***17 horses were shown in halter***

|                                                   |                          |                |
|---------------------------------------------------|--------------------------|----------------|
| <b><u>Stallion – 3 years old and over (1)</u></b> |                          |                |
| 1 Black Park Chancellor                           | Jenny Cournoyer          | Jefferson, MA  |
| <b><u>Senior Champion Stallion</u></b>            |                          |                |
| Black Park Chancellor                             | Jenny Cournoyer          | Jefferson, MA  |
| <b><u>Stallion – 2 years old (1)</u></b>          |                          |                |
| 1 Ox Kill Jose Alerico                            | Eugene & Vicky McCaffrey | Schoharie, NY  |
| <b><u>Junior Champion Stallion</u></b>            |                          |                |
| Ox Kill Jose Alerico                              | Eugene & Vicky McCaffrey | Schoharie, NY  |
| <b><u>Grand Champion Stallion</u></b>             |                          |                |
| Black Park Chancellor                             | Jenny Cournoyer          | Jefferson, MA  |
| <b><u>Reserve Champion Stallion</u></b>           |                          |                |
| Ox Kill Jose Alerico                              | Eugene & Vicky McCaffrey | Schoharie, NY  |
| <b><u>Broodmare – 4 years and over (1)</u></b>    |                          |                |
| 1 Gladwin Jubilee Reign                           | Kim Smith                | Burlington, ON |
| <b><u>Yield Mare 4 years and over (3)</u></b>     |                          |                |
| 1 Ox Kill Spectacular                             | Eugene & Vicky McCaffrey | Schoharie, NY  |
| 2 Fox Hollow Belladest                            | Kenneth & Kimberly Fox   | Oswego, NY     |
| 3 Gladwin Courages Korrie                         | Eugene & Vicky McCaffrey | Schoharie, NY  |
| <b><u>Mare – 3 years old (3)</u></b>              |                          |                |
| 1 Tayson Ziva                                     | Thomas Taylor            | Lisle, NY      |
| 2 Hickory Hill Hannah                             | Turie & Michael Sorrell  | Concord, VT    |
| 3 Squantum Samantha                               | Jenny Cournoyer          | Jefferson, MA  |
| <b><u>Senior Champion Mare</u></b>                |                          |                |
| Tayson Ziva                                       | Thomas Taylor            | Lisle, NY      |
| <b><u>Reserve Senior Champion Mare</u></b>        |                          |                |
| Gladwin Jubilee Reign                             | Kim Smith                | Burlington, ON |
| <b><u>Mare – 2 years old (1)</u></b>              |                          |                |
| 1 Squantum Stella                                 | Jenny Cournoyer          | Jefferson, MA  |

Following Pictures are from The New England Regional—Photos taken by Troika Drafts



**New York Continued:**

**Mare – 1 year old (4)**

- 1 Hickory Hill Adelle
- 2 Hickory Hill Sybil
- 3 Ox Kill Bonny Gean
- 4 Westwind Grand Emily

**Mare Foal (1)**

- 1 Westwind Frances Anne

**Junior Champion Mare**

- Hickory Hill Adelle

**Reserve Junior Champion Mare**

- Hickory Hill Sybil

**Grand Champion Mare**

- Tayson Ziva

**Reserve Grand Champion Mare**

- Gladwin Jubilee Reign

**Mare – Best NYS Owned (3)**

- 1 Tayson Ziva
- 2 Ox Kill Bonny Gean
- 3 Fox Hollow Belladest

**Mare and Foal (1)**

- 1 Gladwin Jubilee Reign

**Get of Sire (2)**

- 1 Isles Field Danny Boy

- 2 Metheringham Upton Isaac Eugene & Vicky McCaffrey Schoharie, NY

**Produce of Dam (2)**

- 1 Gladwin Jubilee Reign

- 2 Ox Kill Madam Sophia

**Shire Herd (1)**

- 1 Ox Kill Entry

**Best US Owned Shire (3)**

- 1 Tayson Ziva

- 2 Hickory Hill Hannah

- 3 Fox Hollow Belladest

**Geldings 3 years old and over (1)**

- 1 Hickory Hill Dalton

**Grand Champion Gelding**

- Hickory Hill Dalton

|                          |                |
|--------------------------|----------------|
| Jenny Cournoyer          | Jefferson, MA  |
| Turie & Michael Sorrell  | Concord, VT    |
| Eugene & Vicky McCaffrey | Schoharie, NY  |
| Kim Smith                | Burlington, ON |
| Kim Smith                | Burlington, ON |
| Jenny Cournoyer          | Jefferson, MA  |
| Turie & Michael Sorrell  | Concord, VT    |
| Thomas Taylor            | Lisle, NY      |
| Kim Smith                | Burlington, ON |
| Thomas Taylor            | Lisle, NY      |
| Eugene & Vicky McCaffrey | Schoharie, NY  |
| Kenneth & Kimberly Fox   | Oswego, NY     |
| Kim Smith                | Burlington, ON |
| Turie Sorrell            | Concord, VT    |
| Eugene & Vicky McCaffrey | Schoharie, NY  |
| Kim Smith                | Burlington, ON |
| Eugene & Vicky McCaffrey | Schoharie, NY  |
| Thomas Taylor            | Lisle, NY      |
| Turie & Michael Sorrell  | Concord, VT    |
| Kenneth & Kimberly Fox   | Oswego, NY     |
| W. Michael Wiebe         | Langton, ON    |
| W. Michael Wiebe         | Langton, ON    |

**Colorado State Fair  
Regional Show  
August 30, 2012**  
Judge: Paul Gingrich  
9 Horses Shown in Halter

**Mare Foal (1)**

- 1 Tally Ho Duke's Jesse

**Mare – 2 years and under 3**

- 1 Summer Rain's Easter Lily

**Junior Champion Mare**

- Tally Ho Duke's Jesse

**Reserve Junior Champion Mare**

- Summer Rain's Easter Lily

**Mare – 3 years and over (2)**

- 1 Tally Ho BK's Lady Emerill

- 2 Hickory Hill Leah

**Senior Champion Mare**

- Tally Ho BK's Lady Emerill

**Reserve Senior Champion Mare**

- Hickory Hill's Leah

**Grand Champion Mare**

- Tally Ho BK's Lady Emerill

**Reserve Champion Mare**

- Tally Ho Duke's Jesse

**Stallion Foal (1)**

- 1 Tally Ho Duke's Zeb

**Stallion – 1 year old (1)**

- 1 Tally Ho Dexter

**Junior Champion Stallion**

- Tally Ho Dexter

**Reserve Junior Champion Stallion**

- Tally Ho Duke's Zeb

**Grand Champion Stallion**

- Tally Ho Dexter

**Reserve Champion Stallion**

- Tally Ho Duke's Zeb

**Geldings – 3 years and under (1)**

- 1 Duke's William of Shady Grove

**Geldings – 4 years and over (2)**

- 1 Tally Ho BK's Tristan

- 2 Tally Ho BK's Triple Platinum

**Grand Champion Gelding**

- Tally Ho BK's Tristan

**Reserve Champion Gelding**

- Tally Ho BK's Triple Platinum

|                          |                |
|--------------------------|----------------|
| Kim Murchison            | Rifle, CO      |
| MacKenzie Shires, LLC    | Longmont, CO   |
| Kim Murchison            | Rifle, CO      |
| MacKenzie Shires, LLC    | Longmont, CO   |
| John Parrington          | Rifle, CO      |
| Jeanette Rochlitz        | Kiowa, CO      |
| John Parrington          | Rifle, CO      |
| Jeannette Rocklitz       | Kiowa, CO      |
| John Parrington          | Rifle, CO      |
| Kim Murchison            | Rifle, CO      |
| Kim Murchison            | Rifle, CO      |
| MacKenzie Shires, LLC    | Longmont, CO   |
| MacKenzie Shires, LLC    | Longmont, CO   |
| Kim Murchison            | Rifle, CO      |
| MacKenzie Shires, LLC    | Longmont, CO   |
| Kim Murchison            | Rifle, CO      |
| Cynthia L. TEMAAT        | Spearville, KS |
| Kim Parrington-Murchison | Rifle, CO      |
| Victoria Hauser          | Pueblo, CO     |
| Kim Parrington-Murchison | Rifle, CO      |
| Victoria Hauser          | Pueblo, CO     |

The following Pictures are from the CO State Fair and Submitted by photographer Jeff Bartko.





**Central WI State Fair  
Regional Show**

**August 31, 2012 - September 3, 2012**

Judges: Larry Honsberger of Elmore, OH & Ken Miller of Bellville, OH  
Halter Horses: 5

**Broodmare – 4 years and over (2)**

1 Lazy S Midnight Beauty      Bernard Stuttgen      Thorp, WI  
2 Lazy S Midnight Bell      Bernard Stuttgen      Thorp, WI

**Yeld Mare – 4 years and over (1)**

1 Lazy S Ace's Queenie      Bernard Stuttgen      Thorp, WI

**Senior Champion Mare**

Lazy S Midnight Beauty      Bernard Stuttgen      Thorp, WI

**Reserve Senior Champion Mare**

Lazy S Midnight Bell      Bernard Stuttgen      Thorp, WI

**Grand Champion Mare**

Lazy S Midnight Beauty      Bernard Stuttgen      Thorp, WI

**Reserve Grand Champion Mare**

Lazy S Midnight Bell      Bernard Stuttgen      Thorp, WI

**Geldings – 4 years and over (2)**

1 Lazy S Midnight Bill      Bernard Stuttgen      Thorp, WI

2 Lazy S Midnight Bob      Bernard Stuttgen      Thorp, WI

**Grand Champion Gelding**

Lazy S Midnight Bill      Bernard Stuttgen      Thorp, WI

**Reserve Champion Gelding**

Lazy S Midnight Bob      Bernard Stuttgen      Thorp, WI

**Produce of Dam (2)**

1 Fox Valley Milady      Bernard Stuttgen      Thorp, WI

2 Shire Crest De Bella      Bernard Stuttgen      Thorp, WI

**Get of Sire (1)**

1 Father Hill Captain Midnight      Darlene Cristadora      Warden, WA

**Hitch Class – Registered Shire Carts (2)**

1 Lazy S Midnight Beauty      Bernard Stuttgen      Thorp, WI

2 Lazy S Midnight Bob      Bernard Stuttgen      Thorp, WI

**Hitch Class – Registered Shire Pairs (2)**

1 Bill & Bell      Bernard Stuttgen      Thorp, WI

2 Prince & Queenie      Bernard Stuttgen      Thorp, WI

**Keystone International Livestock Exposition  
National Show**

**October 4, 2012 - October 6, 2012**

Harrisburg, PA

Exhibitors: 8 (5 states, 1 Canadian Province)

Horses Exhibited: 18 Halter, 3 hitch / riding

**Geldings – 3 years old and under (2)**

1 Hickory Hill Dalton      W. Michael Wiebe      Langton, ON

2 Glenmary Hudson      Janet L. Long      Epsom, NH

**Best American Bred Champion Gelding (2)**

1 Hickory Hill Dalton      W. Michael Wiebe      Langton, ON

2 Glenmary Hudson      Janet L. Long      Epsom, NH

**Grand Champion Gelding**

Hickory Hill Dalton      W. Michael Wiebe      Langton, ON

**Reserve Grand Champion Gelding**

Glenmary Hudson      Janet L. Long      Epsom, NH

**Stallion 4 years and over (1)**

1 Black Park Chancellor      Jenny Cournoyer      Jefferson, MA

**Stallions 3 years old (1)**

1 Hickory Hill Nitro of the Northeast      Janet L. Long      Epsom, NH

**Senior Champion Stallion**

Black Park Chancellor      Jenny Cournoyer      Jefferson, MA

**Reserve Senior Champion Stallion**

Hickory Hill Nitro of the Northeast      Janet L. Long      Epsom, NH

**Stallion Foal (2)**

1 Northeast Intrepid      Janet L. Long      Epsom, NH

2 RM's Moves Like Jagger      Turie & Michael Sorrell      Concord, VT

**Junior Champion Stallion**

Northeast Intrepid      Janet L. Long      Epsom, NH

**Reserve Junior Champion Stallion**

RM's Moves Like Jagger      Turie & Michael Sorrell      Concord, VT

**Grand Champion Stallion**

Black Park Chancellor      Jenny Cournoyer      Jefferson, MA

**Reserve Champion Stallion**

Northeast Intrepid      Janet L. Long      Epsom, NH

**Best American Bred Stallion (1)**

1 Hickory Hill Nitro of the Northeast      Janet L. Long      Epsom, NH

**Best Shire Stallion bred and owned by Exhibitor**

1 Northeast Intrepid      Janet L. Long      Epsom, NH

**Broodmare – 4 years and over (1)**

1 Gladwin Jubilee Reign      Kim Smith      Burlington, ON

**Yeld Mare 4 years and over (3)**

1 Hickory Hill Reva      Janet L. Long      Epsom, NH

2 New England Crystal Star      Amy Wasalaski      Frankford, WV

3 King Creek Lucky Lady      Amy Wasalaski      Frankford, WV



Mare – 3 years old (3)

- 1 Tayson Ziva
  - 2 Hickory Hill Hannah
  - 3 Squantum Samantha
- Senior Champion Mare  
 Gladwin Jubilee Reign  
Reserve Senior Champion Mare

Tayson Ziva

Mare 2 years old (1)

1 Squantum Stella

Mare 1 year old (3)

- 1 Hickory Hill Adelle
- 2 Westwind Grand Emily
- 3 Hickory Hill Sybil

Mare Foal (1)

Westwind Frances Anne

Junior Champion Mare

Hickory Hill Adelle

Reserve Junior Champion Mare

Westwind Frances Anne

Grand Champion Mare

Gladwin Jubilee Reign

Reserve Champion Mare

Tayson Ziva

Best American Bred Mare (1)

Tayson Ziva

Best Shire Mare bred and owned by Exhibitor (1)

Tayson Ziva

Best of Breed

Gladwin Jubilee Reign

Get of Sire (2)

- 1 Isles Field Danny Boy
- 2 Isles Field Danny Boy

Produce of Dam (3)

- 1 Gladwin Jubilee Reign
- 2 Ox Kill Spectacular Dawn
- 3 Deighton Helena

Stallion and 3 mares

1 Cournoyer Herd

Mare and Foal (1)

1 Gladwin Jubilee Reign

Supreme Draft Horse

Gladwin Jubilee Reign

Hitch Class – Shire Mare Cart (1)

1 King Creek Lucky Lady

Adult English Riding (3 gaited) (7)

- 5 New England Crystal Star
- 6 Glenmary Hudson

Decorated Harness

1 King Creek Lucky Lady

Adult Western Riding (3 gaited) (1)

1 King Creek Lucky Lady

Thomas Taylor  
 Turie & Michael Sorrell  
 Jenny Cournoyer

Lisle, NY  
 Concord, VT  
 Jefferson, MA

Kim Smith

Burlington, ON

Thomas Taylor

Lisle, NY

Jenny Cournoyer

Jefferson, MA

Jenny Cournoyer

Jefferson, MA

Kim Smith  
 Turie & Michael Sorrell

Burlington, ON  
 Concord, Vt

Kim Smith

Burlington, ON

Jenny Cournoyer

Jefferson, MA

Kim Smith

Burlington, ON

Kim Smith

Burlington, ON

Thomas Taylor

Lisle, NY

Thomas Taylor

Lisle, NY

Thomas Taylor

Lisle, NY

Kim Smith

Burlington, ON

Turie & Michael Sorrell  
 Janet L. Long

Concord, VT  
 Epsom, NH

Kim Smith  
 Jenny Cournoyer  
 Janet L. Long

Burlington, ON  
 Jefferson, MA  
 Epsom, NH

Jenny Cournoyer

Jefferson, MA

Kim Smith

Burlington, ON

Kim Smith

Burlington, ON

Amy Wasalaski

Frankford, WV

Amy Wasalaski  
 Janet L. Long – Sarah Cournoyer

Frankford, WV  
 Epsom, NH

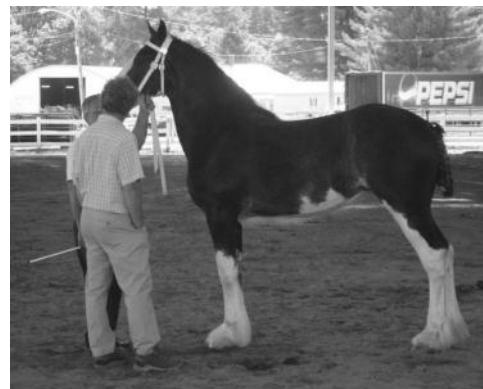
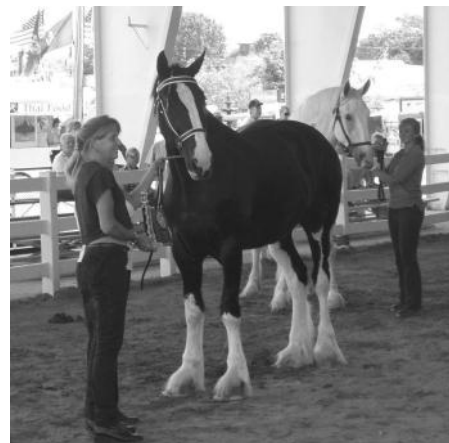
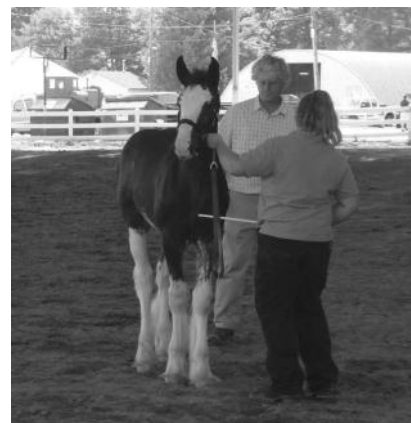
Amy Wasalaski

Frankford, WV

Amy Wasalaski

Frankford, WV

Following Pictures are from The New England Regional—Photos taken by Troika Drafts



# BREEDERS LISTINGS:

-Looking for a Shire-  
Contact one of our Breeders

## Midnight Star Breeders

**Brit and Sharon McLin**  
P.O. Box 957 Silt, CO 81652  
(970) 876-5979  
msbshire@sopris.net  
Breeding Quality Shires Since 1978

## Northeast Shires

**Standing 3 Stallions**  
Embryo & Semen  
collect and preserve  
ShireHorse.com  
603-930-6975

## Gentle Giant Ranch

**Blake & Fran Anderson**  
R.R. 2, Didsbury, Alberta, T0M 0W0, Canada  
(403) 335-9609 [shires@telus.net](mailto:shires@telus.net)  
<http://www.angelfire.com/ca/GentleGiantShires>

## Big Sky Shires

**Brett, Leanne & Connley Hoagland**  
Glendive MT 59330 ~ 406-687-3004  
[www.bigskyshires.com](http://www.bigskyshires.com)  
<http://www.facebook.com/BigSkyShires>  
[bsshires@midrivers.com](mailto:bsshires@midrivers.com)  
*Mind, Movement, & Conformation*

## Tally Ho Shires

Kim, Shad and Alex Murchison  
John and Nila Parrington  
0185 CR 225 Rifle, CO 81650  
970-625-1142 970-618-3223  
Raising outstanding, black Shires for over 40 years.  
[www.tallyhoshires.com](http://www.tallyhoshires.com) "like" us on  
facebook too!!

## Haugen-Hill Shires

Danelle Kinney  
Red Wing, Minnesota  
651-380-9600  
[www.freewebs.com/haugenhill](http://www.freewebs.com/haugenhill)  
*Breeding Champions in the Midwest*

## Sudden Creek Shires

Breeders of Quality Registered Black Shires

Member  
of  
ASHA



Member  
of  
SHS

### Caerbellan Magnum

Grand Champion Stallion  
2006 Midwest Regional Shire Show — MN

Great Hoof Size | Excellent Neck & Head | Outstanding Disposition

We continue to be very pleased with Magnum's foals,  
they exhibit great disposition, intelligence & physical features.

#### Shires Always For Sale

Producing Great Foals from Superior Breeding Stock.

*SOME OF THE HORSES WE'VE PRODUCED*



Owners

Ken & Marlys Knuth  
1014 140th Avenue • Slayton, MN 56172  
(507) 836-8758 | [k.knuth@fecinc.com](mailto:k.knuth@fecinc.com)



Barbara Livingston



© Images by Misti Layne

# TROYER CARRIAGE COMPANY



~Parts~  
~Accessories~  
~Craftsmanship~

*Proud Sponsor of  
ASHA Cart Raffle*

**Handcrafted in the USA**

[www.troyercarriage.com](http://www.troyercarriage.com)



TROYER CARRIAGE COMPANY, INC.

280-A North Village Dr., Shipshewana, In 46565

(260) 768-7135 Fax: (260)768-7137

The American Shire Horse Association est. 1955



Myrna Rhinehart Secretary

P.O. Box 408 ~ Lake Delton, WI 53940

Phone: 888-302-6643

email: [secretary@shirehorse.org](mailto:secretary@shirehorse.org)

[www.shirehorse.org](http://www.shirehorse.org)