

The American Shire Horse Association

est. 1885



SPRING 2012 BULLETIN

A Message From Your President:

Welcome all!

By the time this newsletter reaches you, summer will be well on its way. The excitement of our new arrivals, and the dreams of their future, draw us to working our prospects and showing our accomplishments. Yes, it must be showtime!

For those that are planning to show this year, I encourage you to look up the newly revised show guidelines for 2012. As many Shire owners come to watch, please find time to let the show coordinator know what you thought of the show. We want your ideas.

I want to take this time to thank the BOD for voting to delay the rate changes until August 1st. The need to notify the public, was challenged by technical difficulty. The blessings of a modern age.

Thank you to the members that have renewed their membership, and welcome aboard to our new members. Without all of you, this organization would not be here. I encourage all to get involved in some way with ASHA. The benefit of being a member, is what you choose to make of it. This is a direct call to the membership to participate at any level. Contact your board members, and let us know how you would like to be involved. If you do not like it, change it. Change comes from those that step up and take action. Thank you to those that do.

Have a great summer with your horses.

Todd Riedel

President, American Shire Horse Association
traillightfarms@aol.com

Board of Directors

Todd Riedel ~ President

6168 Greenwich Rd., Seville, OH 44273
(330) 419-0346 traillightfarms@aol.com

Karla Stoner ~ Vice President

8401 Peters Rd., Frederick, MD 21704
(301) 874-3250 bloomforge@peoplepc.com

Kim Parrington- Murchison ~ Treasurer

0185 CR 225, Rifle, CO 81650
(970) 625-1142 thshire@sopris.net

Leanne Hoagland ~ Editor

PO Box 95, Glendive, MT 59330
(406) 687-3004 bsshires@midrivers.com

Dan Hubbell

400 8th St., Traverse City, MI 49686
(231) 947-5600 dan@hubbelllawoffice.com

Danelle Kinney

21847 310th St., Red Wing, MN 55066
(651) 380-9600 haugenhill@hotmail.com

Janet Long

34 Howards Lane, Epsom, NH 03234
(603) 930-6975 janet@northeastshires.com

Gene McCaffrey

267 Sholtes Rd., Schoharie, NY 12157
(518) 872-1295 oxkill@capital.net

Paul Tyrell

PO Box 320, Upperville, VA 20185
fourinhand@gmail.com

Secretary

Myrna Rhinehart ~ Secretary

P.O. Box 408 ~ Lake Delton, WI 53940
Phone: 888-302-6643
email: secretary@shirehorse.org

The Editor's Note:

Hello Members:

Summer will be half done when you get this. Many of us are showing our horses and enjoying our Shire experiences relaxing the summer away.

I want to thank all of you that submitted pictures for the press packet. Many sent me proofs to have the committee pick from and I will let you know when we need original high resolutions sent. There are some really great works.

As I finish this edition I am getting ready to fight wild land fire in central MT to defend our family place, as well as begin the rebuilding process for my parents. The world is ever changing and many of us never know what we have until we have lost it. My family is lucky in this endeavor because of a lifetime of planning. I encourage all of you to plan for natural disasters.

Most of our Shire foals are on the ground and looking wonderful. There are some fine young babies across the country. Thank you to all of you who take the time to breed with quality as your first consideration! You as well as our Shire owners across the US are keeping this wonderful breed alive. I also task our Shire friends with building a community amongst us that will ensure the viability of our breed and growth for our organization. Many of you are doing this by providing information for this publication, pictures for the press packet, serving on committees, showing in our Regional shows and just loving your Shire and sharing them with the world!

I want to thank Todd for being so available in the time of the loss of his Mother. He helped me get many items ready for this publication and also has helped with many ASHA items through this time of loss. On behalf of ASHA and the members we send our condolences.

Please keep safe and remember to enjoy life, your family, friends and most of all your Shires!! After all the horse are why we are all together!

Leanne

(406) 687-3004

bsshires@midrivers.com



ASHA Fee Schedule Changes effective June 1, 2012 **(postmark or online payment)**

At the 2012 ASHA Annual Meeting, the board adjusted some ASHA membership and registration fees for the first time in several years. While domestic annual memberships remain the same, foreign address annual memberships will be \$65 for one year, \$120 for two years, and \$160 for three years. Foreign address Friends of the Shire are \$40. These increases cover additional foreign mailing costs.

Corporate memberships are available to corporate farms, LLCs, and similar entities at \$275 for five years. The entity EIN and the notarized signature for the authorized signer on behalf of the entity must be furnished to ASHA. Horses can then be owned by the entity.

Life memberships are \$800 or \$175 per year for five years. Foreign address life memberships are \$1000 or \$215 per year for five years.

Prefix registrations are \$50 and are available to current ASHA members only. Leases are \$40 each time the ASHA office processes a lease.

Duplicate (replacement) registration certificates are \$40. Either original papers (if requesting a correction) or a notarized statement about the loss of the original must accompany the request and fee for duplicate papers.

Blood type-to-DNA conversion is \$40. Five-generation pedigrees are \$10 when ordered with a registration, \$20 when ordered separately.

Registrations are \$100 up to 6/1 of the yearling year, \$200 after 6/1 of the yearling year and before 6/1 of the two-year-old year, and \$400 after that. (Geldings any age are \$100, and all registration fees are double for non-members.)

Transfers are \$40 for members and \$80 for non-members.

A complete fee schedule is available at www.shirehorse.org Items postmarked by May 31, 2012 or paid online by May 31 will be processed at the old rates. All items postmarked or paid online June 1, 2012 or after will follow the new fee schedule.

**** Next Bulletin will list these in table format.**

Need More Information or Assistance?

Contact The Secretary

Office hours are 9am to 3pm CDT Tuesday, Wednesday, & Thursdays.

Myrna Rhinehart Secretary

American Shire Horse Association
P.O. Box 408 ~ Lake Delton, WI 53940

Phone: 888-302-6643

email: secretary@shirehorse.org

www.shirehorse.org

Secretary's Report –

Myrna Rhinehart

“How’s the new job going?” is a question I hear a lot lately, and my answer always is, “Great!” I am getting the hang of the processes so that I am becoming more efficient at all of the aspects of the position, i.e. registrations, transfers, banking, bookkeeping, taking minutes, and putting out small fires! I think it will only get better from here on.

So far in 2012:

Registrations – 45 (32 mares, 10 stallions, 1 gelding, 2 Shire Sport Horses)

Transfers – 108 (54 mares, 22 stallions, 13 geldings, 5 Shire Sport Horses)

Pending Registrations – 26 waiting for hair samples and a few older pendings (If you haven’t pulled your hair samples, please get them in soon so you don’t forget!)

Current Membership – 299 (102 Life Members) (72 non-renewals from 2011)

I have talked with lots of people who are really encouraged by the state of the organization and are looking forward to the potential we have. Financially, it looks to me like we are in a pretty good state. The Board has been very supportive of the work we do, and the people I have talked with on the phone, over email, and in person have been very pleasant. It makes the job very enjoyable and encouraging. I look forward to “coming to work” even if it is only outside my bedroom door (which by the way is very handy as well!). If you have any concerns about the organization, we would encourage you to constructively share them with us so that we can move the organization forward.

There are plans for the future in terms of marketing the Shire breed more effectively, but like all volunteer-based organizations, it is going to take some time. The ideas are being generated, and now that I am completely caught up on registrations/transfers in my “In Box”, it will be time to work on organizational management duties of helping to pull those ideas together for a cohesive, effective marketing package. But again, it won’t happen overnight. If you have ideas you would like to share for the benefit of the breed, please contact either the ASHA office or any of your ASHA directors who would be happy to hear your ideas.

Yours in Service,

Myrna Rhinehart

****Save the Date****

2013 Annual ASHA Education Day and Member’s Meeting

Where: Davis, California

When: Feb. 15th – 18th, 2013

Closest Airports:

Sacramento (30 minutes away)

Oakland (60 minutes away)

San Francisco (90 minutes away)

Agenda:

15th – Afternoon tour ~ DNA Analysis Lab at the VGL Davis, CA.

16th – Education Day at the University of California at Davis

Possible topics could include:

Harness fitting/saddle fitting

Conditioning and travel for show

Neonatology

Radiology – ring bone/side bone, laminitis

CPL – Scratches research information

*Please let us know if you have an idea not listed above.

17th – ASHA member’s meeting from 8am – 10 am

ASHA Board of Director’s meeting to follow

18th – Finishing up the ASHA Board of Director’s meeting

*Hotel details to follow...

For more information or to suggest topics for Education Day, Kim Murchison at thshire@sopris.net or 970-625-1142

NEW!! The office now can take credit cards!

No need to log into PAYPAL-

Just contact our office and pay with a real live person!

American Shire Horse Association

Profit & Loss

January 1 - June 30, 2012

	Total
Income	
Advertising Special Projects	150.00
Bulletin/ Magazine	
Advertising Newsletter	610.00
Total Bulletin/ Magazine	610.00
Contributions/Donations Income	702.05
Education Day Proceeds	343.80
Horse Show Income	580.89
Interest Income	26.73
Membership Dues	
1 Year Membership	3,350.00
2 Year Membership	1,910.00
3 Year Membership	140.00
Corporate	275.00
Life	3,850.00
Total Membership Dues	9,525.00
Merchandise Sales	1,065.75
On Line Stud Book Revenue	896.00
Raffle Sale Proceeds	120.00
Registry Income	30.00
Genetic Identification Revenue	240.00
Pedigree	20.00
Prefix reservation	100.00
Registrations	5,600.40
Replacement papers	150.00
Sport Horse	950.00
Transfers	3,750.00
Total Registry Income	10,840.40
Shires4Sale.com Revenue	451.20
Uncategorized Income	19.60
Total Income	\$25,331.42
Gross Profit	\$25,331.42
Expenses	
All-American Contest Expenses	201.79
Bad Debts	45.00
Bank Charges	32.89
Credit Card Charges (PayPal)	232.68
Total Bank Charges	265.57
Board Expenses	

Annual Board Meeting	767.83
Telephonic Meetings	120.76
Total Board Expenses	888.59
Contributions	180.00
Dues & Subscriptions	290.00
Education Day Cost	32.95
Horse Show Costs	-439.53
Insurance	389.41
Legal & Professional Fees	10.00
Mailings to members	
Bulletin	
Newsletter Honorarium	250.00
Postage Bulletin	844.68
Printing Bulletin	2,031.65
Total Bulletin	3,126.33
Minutes	
Postage Minutes	105.93
Printing Minutes	309.61
Total Minutes	415.54
New Member Packets	48.54
Total Mailings to members	3,590.41
Merchandise Product Cost	157.27
Merchandise Shipping Costs	4.71
Office Expenses & Supplies	642.61
Payroll Expenses	122.00
Taxes	495.00
Wages	4,400.00
Total Payroll Expenses	5,017.00
Postage	237.11
Promotional	465.62
Equine Affaire Costs	769.00
Total Promotional	1,234.62
Registry Expenses	
Genetic Marker Costs	1,215.00
Registry Discounts	293.53
Total Registry Expenses	1,508.53
Taxes & Licenses	21.00
Telephone Expense	300.62
Transition costs	68.85
Transition travel	1,467.10
Total Transition costs	1,535.95
Travel	1,118.73
Youth Awards	34.12
Total Expenses	\$17,266.46
Net Operating Income	\$8,064.96
Net Income	\$8,064.96

American Shire Horse Association
Balance Sheet
 As of June 30, 2012

	Total
ASSETS	
Current Assets	
Bank Accounts	
Alpine Bank Checking	3,859.39
Credit cards to Alpine	4,593.75
Show Fund	3,025.00
Total Alpine Bank Checking	11,478.14
Alpine CD	15,247.06
Alpine Life Member MM	13,495.98
Total Bank Accounts	\$40,221.18
Accounts Receivable	
Accounts Receivable	-12.00
Total Accounts Receivable	\$ -12.00
Other Current Assets	
Credit Card Receivables	0.00
Inventory	3,088.25
Undeposited Funds	165.00
Total Other Current Assets	\$3,253.25
Total Current Assets	\$43,462.43
TOTAL ASSETS	\$43,462.43
LIABILITIES AND EQUITY	
Liabilities	
Current Liabilities	
Payroll Liabilities	
Federal Taxes (941/944)	297.25
WI SUI Employer	72.00
Total Payroll Liabilities	369.25
Payroll Tax Payable	8.55
Sales tax payable	0.00
Total Other Current Liabilities	\$377.80
Total Current Liabilities	\$377.80
Long-Term Liabilities	
Total Long-Term Liabilities	\$0.00
Total Liabilities	\$377.80
Equity	
Retained Earnings	35,019.67
Net Income	8,064.96
Total Equity	\$43,084.63
TOTAL LIABILITIES AND EQUITY	\$43,462.43

2007 Shire stallion Mufasa (Laurel's Powerful Paul x Wandamere Suki) turned in a fantastic performance at his first sanctioned USDF Dressage show at Harmony in the Park in Ed-inburgh, Indiana on May 19 and May 20, 2012.

Mufasa, affectionately known as 'X', scored a 69.58% on his Training Level,-Test One, and then went on to produce a second round of excellent scores in the 60's at Majestic View II and Majestic View III in Batavia, Ohio on June 9. For a young stallion in his first under-saddle shows, we could not be more pleased with his performance!

This is a great start to his career in the Dressage ring, and we are very happy to have achieved such strong scores in his four year-old year. 'X' also turned many heads with his flashy looks and flying feathers. His outstanding work ethic and quiet demeanor were a credit to the Shire breed, and we look forward to posting more scores later this year at our late summer and fall shows. Editor's Note: "X" is one of several new horses earning points in the SAC program.



Check out this issue of the *Draft Horse Journal*. Several Shires grace the pages in many pictures, articles, and ads— this cover shot shows a Shire—Taken by J Ann Broadland



Advertising Rates:

Support the Shire and Advertise at the Same Time!

We invite you to advertise with us each quarter. There will be two ad sizes available with the option of a text ad in the Breeder's Directory or in the classified section. We will require that all ads be sent in Jpeg or picture format and be camera ready. If you need design help contact one of the editors and we will get you in touch with someone who can help you. At this time all ads are black and white.

***** Your best deal is the Four Issues. You pay for three and get one free!**

****At this time we are not taking cover ads- if the Bulletin expands to that point we will put the inside of both the back and front covers up for purchase.**

*** Classified Ads must be submitted in writing and renewed each issue.**

**Contact: Leanne Hoagland bsshires@midrivers.com
406-687-3004 (H)/ 406-939-1263(C)**

<u>Ad</u>	<u>One Issue</u>	<u>Four Issues</u>
5 X 7 Inch Landscape	\$100	\$300
3 3/4 X 5 Inch Portrait	\$75	\$200
Breeder's Directory Text Only <i>30 Characters per line including spaces. Six Lines of text total</i>	\$35	\$110
Text Only Classified Ad <i>30 Characters per line including spaces. Six Lines of text total</i>	\$10.00 Per Ad Per Issue	N/A

<u>Newsletter</u>	<u>Estimated Mail Date</u>	<u>Ad Copy Due</u>
Winter	January 15	December 1
Spring	April 15	March 1
Summer	July 15	June 1
Fall	October 15	September 1



We Want to Hear from You- THE MEMBERSHIP:

In the 2011 Bulletin we have a new section called "Meet the Membership". In order to make this section the best it can be, we need your input as a member. There are two parts to this section of the bulletin. Details for each section are listed below. The third and final way you can take part in the Bulletin is by advertising with us:

Individual Member Highlight

We will highlight a few members in each bulletin. Below are several questions we would like to have you answer and return to us with a picture to print with your answers to the questions.

Questions to answer: (About 300 Words)

- 1) Name and business name if any
City and State
Email address/ Phone if you want
Family
Prefix
- 2) What is your background in horses and how did you get into Shires
- 3) Shires Owned:
- 4) What do you do with your horses?
- 5) What are your future goals with your horses?
- 6) What would you like to see in the future for / from ASHA?

Member News

Send us pictures or small write ups (paragraph to a few sentences) of what you are doing or is interesting with you and your Shire horses.

- Promotional
- Just for fun
- Shows
- Pulls
- Trade shows
- Awards and honors

Contact YOUR Editors for More Info!!

Leanne Hoagland
(406) 687-3004
bsshires@midrivers.com

Kim Mutchison
(970) 625-1142
thshire@sopris.net

**** These sections will vary in size due to submissions and space available.**



Grand Champion Mare DraftsForSale.com	Reserve Grand Champion Mare Cedar Hill Shires, Rob Rich, Baraboo, WI
Grand Champion Stallion Ox Kill Farm, Gene & Vicky McCaffrey, Schoharie, NY	Reserve Grand Champion Stallion Ayrshire Farm, Sandy Lerner, Upperville, VA
Grand Champion Gelding Celeste Hill, Ravens Moon Ranch, Sweetwater, TX	Reserve Grand Champion Gelding Denis Boncek, Owego, NY
Senior Champion Stallion	Senior Champion Mare Fred Topping, Afton, NY
Junior Champion Stallion Taylor Farm, Bob & Shannon Taylor, Owego NY	Junior Champion Mare
Jane Gaydon Memorial Trophy for Senior Champion Mare Laura Gaydon Wash, Amarillo, TX	

****Your support of Shires and the National Show is greatly appreciated!!****

NATIONAL SHOW TROPHY SPONSORS STILL NEEDED

ASHA needs sponsors for two of the National Show Trophies. The sponsorships are for three years (2012 through 2014). The trophies are polished black granite, laser engraved with the ASHA logo, a Shire trotting in harness and the award and show information. Sponsors are recognized with a sponsorship plate on the trophy and in show premium lists, programs and the ASHA Members' Bulletin. The trophies still available for sponsorship are:

Senior Champion Stallion

Junior Champion Mare

Northeast Shires

is standing three outstanding Shire stallions:

We provide the same live foal guarantee for frozen semen as we do on shipped chilled for these three stallions. Please visit our website for breeding contracts and pictures of our stallions.

Epsom, NH
603-930-6975

Janet@ShireHorse.com
<http://www.ShireHorse.com>

Sladbrook Jubilee Spirit - \$1000/LFG

Rushall Isaac - \$1000/LFG

Hickory Hill Nitro of the Northeast -\$600/LFG

Northeast Shires is actively preserving the genetics of the Shire.

We collect and freeze embryos and semen from our client's quality Shire stock. Once preserved in liquid nitrogen, semen and embryos remain viable indefinitely.

Contact us for more information.

Why might I want a registered “Prefix”?

A registered prefix in the “Shire” world means that you have a farm or family name to label horses that have come from your farm. This is especially important if you are raising foals. Upon registering your foals, the prefix would be placed at the beginning of each foal’s name. The prefix you choose should have significance to your farm or family. Some family’s prefix (underlined) is just their last name like Eaton’s Victor or Steege’s Beth; others use landmarks of where they are from such as Ox Kill Titan or River Valley Master. By “registering” your prefix with the ASHA office, you guarantee that no one else can use your prefix when registering his or her horses. Our ASHA secretary keeps a list of registered prefix’s and checks that list against any new registrations that come in. We’ve also attached a list of “known” registered prefixes below so if you are thinking about attaining a registered prefix for your farm, you’ll know which prefixes have already been used. A prefix also allows you to track horses from your farm. We’ve had calls from people who ended up with a “Tally Ho” something and want to know more information about that horse. In the competitive world (halter, hitch, dressage, etc), a horse’s registered name also reflects on the farm that raised it and can help you market your other animals. Prefix registration is easy, just call the ASHA office and ask about the prefix you would like to register. Then, send a one-time fee of \$50 to “hold” your prefix for you in the ASHA office.

ASHA Registered Prefixes

Registered Prefix

Achy Breaky Acres*
 American Outback Shires*
 Anjes
 Annabelle Farms*
 Argonant Farm*
 Autumn Hills*
 Avalon Shires/Avalon's*
 Avatar*
 Big Feather Ranch*
 Big Foot* and Bigfoot*
 Big Little Shires*
 Big Sky*
 Black Forest Shires*
 Black Jack Farms/BJF*
 Black Knight's Majestic*
 Bloomsbury Forge*
 Bonny Farm*

Brigadoon Farm*
 Brylyn Shire Farms*
 Camelot Acres*
 Camelot Shires*
 Cedar Creek*
 Cedar Hill Shires/ Cedar-Hill*
 Cedar Ridge*
 Clark's Red Top Shires*
 Collins River*
 Country Pride*
 D&J's*
 Daugherty Farm/Door T*
 Den-Cur*
 Desert Shire*
 DFF ThunderHoof*
 Dragon Heart Shires**
 Dua He Chi's*
 Eaton Acres Majestic Shires/Eaton Acres*
 Echo Valley Shires/Echo Valley*
 Empresshire*
 Forest Hills Farm*
 Forge Run Farm*
 Fox Valley Draft Horses*
 Foxvale Farm*
 Gallant Gait*
 Gallytrot*
 Gaydon Tejas Shires* Tejas*
 Gentle Giant Ranch*
 Gladwin Shires*
 Gowalty's*
 Grinning Dog Farm*
 Haugen Hill Shires*
 Hawk's Prairie Shires*
 Heart Mountain / H.M.S. *
 High Bridge Shires*
 Highwood*
 Hollyshire*
 Honey Creek Shires*
 Huska Millenium Shires*
 Illusion Farm*
 Iron Will*
 Iron Slipper*
 Jenson Shires*/ Jenson* /Whispering Pines*
 Kallisto Shires*
 King Creek Shires*
 Knight Haven Ranch*
 Lightning "L"*
 Lincoln's*/Lincolnshire*
 Litchfield Shires*/Nomandy*
 Long Acres Shires / Long Acres*
 Lost Creek*
 Madison*
 Maggie's Mountain Top Drafts*
 Magnolia Draft Horse Ranch* Magnolia's*
 Mainely Shires
 Mason's Shires*
 McDixon Wind Dragon Farm*
 Meadowbrook Horse Farm*
 Meadowvale Shires*
 Methow Valley Shires*
 Midnight Star Shires*
 Milkhouse*
 Moonlight Shires*

MorrisShires*
 Mountain Paint Gallery*
 Myakka Valley Ranches*
 Near But Far Horses/NBF
 Noble Shire Carriages*
 Northeast Shires*/Black Horse Farm*/ BHF*
 Nottingham* Shire & Carriage
 O'Bannon's DunRovin Ranch*
 Orchard Hills Shires*
 Ox Kill Farm*
 Pennwoods*
 Quiet Times Shires*
 Rainbow's End*
 Red Oak*
 River Valley Shire Farm*
 Royal Ambassador Shires*
 Royal Lineage*
 Running Free*
 Running Tab Ranch/RTR*
 Rush River Ranch*
 Scratchbottom*
 Shady Oak Shires*
 Shenanigan Shire Farm*
 Sherwoodshire Farms*
 Shire Crest*
 Shire Hall Farm*
 Shire Lane*
 Shire Ridge*
 Shirebrook*/Golden West*/Faultline*
 Shively Shires*
 Single Tree Farm*/Darnell's*
 Snow Wood Farms*, Inc.
 Springfield Horse Farm*
 Star Knight Farms*/SKF*
 Starcastle Farm*
 SterlingShire Stables*
 Storybook Farm*
 Sudden Creek Shires*
 Summer Rain Shires*
 Sun State*
 Sweetwater Shires*
 Tally-Ho Shires*
 Tamarack Ranch*
 Taylor Farms*
 Tayson Shires*
 Templar*
 Teton River Shires*
 Texas* Draft Horse Farms
 Thames Oak*
 The No Bar B Ranch LLC*
 Thistledown Farms*
 Top of the Hill*
 Trail-Light Farm*
 Triple "H" Shires*
 Two Chaix's Draft Horses*
 Uhl-Di*
 Van Dyke's 1 Mile Shires*
 Walkabout Crossing*
 Walnut Hill*
 Wild Rose*
 Windchime*
 Windy Night Shires*
 Woodbourne Hollow*

ASHA Mission and Purpose Statements

Mission Statement

The Mission Statement of the American Shire Horse Association is to maintain the integrity of an accurate registry and promote the Shire breed through excellence.

(Developed at the 2002 Annual meetings)

Purposes: (summarized from the ASHA by laws and articles of incorporation)

- To form, conduct and operate a non-profit organization composed in whole or in part of persons, firms and/or corporations having interest in the breeding and improvement of Shire horses;
- To foster and preserve the traditions pertaining to the Shire horse;
- To encourage original investigations in determination and development of the best types of horses and the breeding to only purebred sires;
- To assist in procuring and making available for breeding suitable stallions and mares;
- To collect, revise, preserve and publish the history and pedigrees of purebred horses, particularly Shire stallions and mares, under such regulations as may be prescribed by said organization;
- To do all and every other act or thing necessary, suitable and/or proper for the accomplishment of all or any of the purposes or in the furtherance of any of the powers herein set forth and to do every other act or thing incidental to or appurtenant to or connected with said powers.

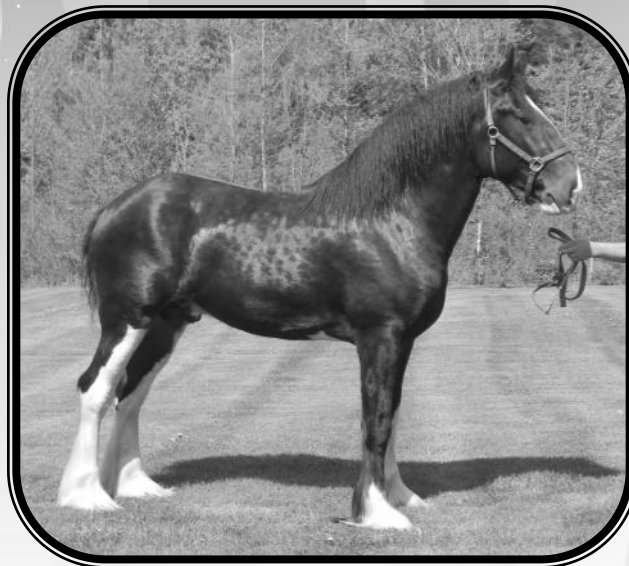


Hickory Hill Hannah
All-North American
Two Year Old Mare



Taylor's Agatha
Res. All-North American
Yeld Mare

**We are proud of our Winners
& What They are Producing.**



Legacy's Image

Res. All-North American
Two Year Old Stallion

Producing outstanding foals— Watch for our 2012 Crop

*Rising
Moose
Stables*

**Michael & Turie
Sorrell**

147 Fournier Road/ P.O. Box 107
Concord, VT 05824
(802) 695-2980
tsorrell@myfairpoint.net
www.risingmoosestables.net

**STRIVING TO
PRODUCE THE BEST**

HOW TO: Find Information on ASHA Shows on the Website

Go to ASHA's website - www.shirehorse.org

When the home page appears, there is a line of menu items just under the masthead at the top of the page.

'Shows' is in the center of that string. If you place your cursor over 'Shows', a menu pops up with the topics listed below. Clicking on a topic will take you into that area. A description of what is included under each topic appears under it.

Upcoming Shows

Scroll down the page until you get to the show you are looking for. Each show is listed as a Regional, Local or National. Coordinator contact information, website for the show, dates, premium book information, judges, closing dates for entries, lodging information and other details may be provided. If it is early in the year, some information may not yet be available. Check back for additional details.

Show Results

Results of ASHA shows from 1996 to the present

Click on the small arrow to the left of 'Select Show' to drop the list of shows. Scroll down the list to the show you want results for and click on it to highlight. Then click on 'Select Show' for those results. You can also export the results to a word document by clicking on '[Click Here](#)' just under the 'Select Show' button.

Point Results

Premier points standings for 2008 to the present

The topic opens on current year standings. Previous years may also be selected. Show and class details for each horse may also be viewed by selecting those options

All North American Entry Form

Entry form and rules for the Draft Horse Journal program

SAC

(Shire Alternative Competition Program started in 2010)

Rewards Shire and Shire sport horse owners for participation in non ASHA Shows or competitions and activities other than shows (competitive trail rides, Pulls, etc.)

Explanation of the program, entry form and rules and list of awards and pictures

USDF (United States Dressage Federation)

Adequan™ All Breeds Awards

Explanation of awards and link to USDF website for more information
Copy of June 2012 USDF Connection magazine breed of the month article on Shires

Show Eligibility Rules

Shires must meet these rules in order to show in ASHA sponsored shows

Hints for Showmanship

(Small arrow to the right drops a sub menu for **Etiquette** and **Youth Guidelines**)

Etiquette - how to properly prepare and show your Shire at halter

Youth Guidelines - to assist youth in properly preparing and showing Shires

ASHA Show Guidelines

Outline for the American Shire Horse Association Board of Directors, Show Committee (and sub-committees) and the general membership. Set up to help promote the Shire horse through shows and consistent showing practices. It establishes national and regional shows and procedures to be followed at these shows. It creates a method of coordinating Shire exhibitor and management interests at shows and provides recommended responsibilities of the show exhibitor.

ASHA Points System

Explanation of the Premier Points and Horse of the year Program

Quick Tips for the Barn:

Submitted by Janet Long

I know some of my friends have bucket babies this year. I've had a couple in the past myself. It is really tough for me because I have to be gone 10 hours a day for my job and foals really should be getting milk every few hours. So I came up with this automatic milk feeder. It uses a submersible aquarium pump and a timer from Home Depot. The timer just needs to be able to do one minute intervals to work. My vet wanted me to patent this, but I didn't think that made sense. I have built two more of these for other people in my area and they loved them. Milk is automatically dispensed at 9am, noon, 3pm, 6pm, 9pm, midnight, and 3am. At 6am we cleaned the setup and fed milk by hand and then filled the insulated container.



This is a 5 gallon insulated cooler. Inside is a small submersible pump, designed for an aquarium. This pump is hooked up to a timer and runs for 1 minute at a time. The height of the cooler is very important so that a siphon is not created. The bucket in the next picture must be above the level of the milk in the cooler.



Shown is a small heated bucket with a non-movable tube attached. Inside of this tube runs a clear plastic tube which goes into the cooler and is attached to a pump. The small bucket and the clear tube are cleaned daily.

2012 Show Schedule - Through Mid-August:

Note: Qualifying shows for the All North American Contest are coded as follows: AA show (1st – 4th), A show (1st – 3rd), B show (1st or 2nd), C show (1st only)

The 2012 NATIONAL SHIRE SHOW

To be held at the **Keystone International Livestock Exposition (AA)** at the Farm Show Complex, Harrisburg, PA, October 4-6. (www.keystoneinternational.state.pa.us) Halter classes tentatively scheduled for Friday, Oct. 5th. Premium books will be available on line later this spring. Show office (717-787-2905). Coordinator: Karla Stoner, phone: 301-874-3250, email: bloomforge@peoplepc.com

Ohio State Fair, Fairgrounds, Columbus, OH (B) (**Regional**), Draft horse show August 2-3. All breed Champion Cart Class Aug. 1st. (<http://www.ohiostatefair.com/osf/osf3.htm#OpenHorse>), Judges: Halter – Ross Honsberger, Hitch – Mark Sparrow. Premium lists available on the website. Pre-entries close: July 7, late entries accepted until July 16 with extra fees. Coordinator: Todd Riedel, phone: 330-419-0346, email: TrailLightFarms@yahoo.com

Colorado Draft Horse Classic, Garfield County Fair Grounds, Rifle, CO (B), (**Regional**). August 5th. (<http://www.codraffthorseclassic.com>). Premium book available on line. Pre-entries close July 15th, Post entries accepted. Halter and hitch classes. Judge: Bud Walsh, Brighton, CO. Coordinator: Kim Murchison, Phone: 970-625-1142. Email: thshire@sopris.net

Addison County Fair, Middlebury, VT (B) (**Regional**) – August 10-11. Halter and hitch classes. Judge: Troy Thomas, New Brunswick, Canada. Premium books: Kathy Kennett 1716 VT Route 22A, Panton, VT 05491 or email: kkennett@together.net Coordinator: Turie Sorrell, phone: 802-695-2980, email: tsorrell@myfairpoint.net

Skowhegan Draft Horse Show, Maine State Fair, Skowhegan, ME (B) (**Regional**) (<http://www.skowheganstatefair.com>), August 17. Halter classes - 9:00 AM. - Hitch classes 5:00 PM. Judge: Jeffrey Fiske, Nova Scotia. Co-coordinators: Vicki Schmidt, troika@megalink.net and Jenny Courmoyer, rollerjgirl@yahoo.com.

New York State Fair, Syracuse, NY, (B) (**Regional**), Aug. 28 – Sept. 3. (<http://www.nysfair.org>). Stallion & mare halter classes are on 8/28, geldings 8/29 AM. Halter Judge: Mark Hochstetler, Berlington, MI; hitch judges for Shire only hitches is Travis Leeman of Indianapolis, IN. Premium books – <http://naomishorseshows.com> to NYS State Fair and click read more or call Naomi Blumenthal 315-682-1933 or the show coordinator: Vicky McCaffrey, 518-872-1295 or email: oxkill@capital.net. Pre-entries close Aug. 17, post entries accepted.

Colorado State Fair, Pueblo, CO (**Regional**), Aug. 31 – Sept. 3. (<http://www.coloradostaefair.com>), Coordinator: Kim Murchison, Phone: 970-625-1142. Email: thshire@sopris.net

Central Wisconsin State Fair, Marshfield, WI (B) – (**Regional**) Sept. 2 - 5, (<http://www.centralwisconsinstatefair.com>). Halter and hitch classes. Premium book - contact fair office at 715-387-1261 or email cwsf@tznet.com. Entries must be post marked by August 1. Judges: Ken Miller, Bellville, OH and Larry Honsberger, Elmore, OH. Coordinator: Danelle Kinney, 651-380-9600, email: haugenhill@hotmail.com.

Oklahoma State Fair, Oklahoma City, OK (C) - (Local show) – Sept. 13 - 23. (http://www.okstatefair.com/horse_premium.asp), Check website for premium book. Due to lack of entries last year, Clydes and Shires will show together in 2012. Coordinator: Jennifer Cwaggenberg, email: jenniferccwaggenberg@gmail.com, Phone: 972-897-7661.

International Draft Horse, Mule and Pleasure Driving Show, Los Angeles County Fair Grounds, Pomona, CA (A), (**Regional**), September 22-26 (<http://lacountyfair.com/2012/Competitions/index.asp>). Coordinator: Sharon McLin, email: msbshire@sopris.net, Phone: 970-876-5979.

Georgia National Fair, Perry GA (C) – (Local show) – October 12-13. (www.georgianationalfair.com). Judges: Beth & Don Palmer, Ontario, Canada. Pre-entry deadline, Sept. 15. Late entries accepted. Show Secretary: Barbara Hawkins Phone: 864-895-4922. Premium list now available on the website.

For additional information on ASHA shows, visit www.shirehorse.org and click on 'Shows' and then 'Upcoming Shows' on the menu and scroll down to the show you are interested in.

Other Qualifying shows of the 2012 All North American contest:

U.S.A.:

Nebraska State Fair, Lincoln, NE (C), Aug. 24 – 26, website: www.statefair.org

MN State Fair, St. Paul, MN (C), Aug. 22 – 28, website: www.mnstatefair.org

Fryeberg Fair, Fryeburg, ME (C), Sept. 30 – Oct. 7. website: www.fryeburgfair.com

Champlain Valley Fair, Addison, VT (C), late Aug. – early Sept., info: 802/878-5545, www.cvexpo.org

Canada:

Vermillion Fair, Vermillion, Alberta (C), late July. Website: www.vermillionfair.ca/

Carp Fair, Carp Ontario (C), September 20 – 23. Website: <http://carpfair.ca/>

BREED PROMOTION

MANY THANKS to all these members for their effort and dedication to promote **SHIRES!!** If you have an upcoming promotional event for Shires or recently participated in an event, we would like to publicize it in the Members' Bulletin. We can also help with Shire and ASHA information for display and handout. Contact Karla Stoner (bloomforge@peoplepc.com).

Recently Completed Events:

Equine Affaire, Columbus, OH – Ohio State Fair grounds (Expo Center), April 12 - 15, 2012. There were daily breed demos or spotlights, a breed stall and an ASHA information/merchandise table at this event. Todd Riedel and Emily Cullison, Dr. Richard Hurt, Claudia Jorgenson, Sarka Velka-Bozeman and Brian Reid brought a total of 9 Shires from Ohio, Indiana, West Virginia and Rhode Island. See page ____ of this Bulletin for pictures – Organizers: Todd Riedel and Emily Cullison; TrailLightfarms@aol.com, breed booth: Karla Stoner; bloomforge@peoplepc.com

2012 Annual Clydesdale Sale included Shires this year, Michiana Event Center, Howe, Indiana – April 26 – 28. Thirteen Shires were entered in the catalogue, with eleven going through the sale. There was also a Shire cross as a non-cataloged entry. AHSA had an information/ merchandise booth at the event as well. See article on page ____ for details and pictures.

Minnesota Horse Expo, Minneapolis, MN (State Fair Grounds) – April 27 – 29. This was the 30th Anniversary Year for this expo. Kent Wilson Jones and friends did a great job representing Shires again at this event. Many thanks for their efforts to promote Shires. See page ____ of this Bulletin for pictures and further information. Kent may be reached at twkjco@aol.com

Rare Breeds Show, Garfield Farm, La Fox, IL – May 20. This event is sponsored the American Livestock Breed Conservancy. Breeders from around the Midwest display rare and historic types of livestock. Jane Hoffman has been taking Shires to this event for many years and did so again this year. Her Shires are always a BIG hit. Thank you Jane! jane_hoffmann@yahoo.com

2012 Horse Progress Days, Clare, MI – June 29 & 30, 2012 – ASHA shared a booth with the Northern Michigan Draft Horse and Mule Association at this event. Butch and Katie Ruppert and Dan Hubbell coordinated and ran this event for ASHA with help from Jan Baumgras. The Rupperts plan to take two of their Shires to the event. More details will be in the fall issue of the Bulletin. Organizers: Butch and Katie Ruppert: fruppert@netonecom.net, Dan: dan@hubbelllawoffice.com.

Upcoming Events:

Equine Affaire, West Springfield, MA – Eastern States Exposition Grounds - November 8 – 11, 2012. Shire breed stall and demos, ASHA information and merchandise booth. More details to follow. Contact Vicky McCaffrey oxkill@capital.net or Karla Stoner bloomforge@peoplepc.com

If you have an upcoming promotional event for Shires or recently participated in an event, we would like to publicize it in the Members' Bulletin and on the website. We can also help with Shire and ASHA information for display and handout. Contact Myrna Rhinehart (secretary@shirehorse.org) or Karla Stoner (bloomforge@peoplepc.com).



Are you taking your Shires to a Horse Expo or event to “promote” the breed?

ASHA offers a few \$150 stipends to the first members that apply (and qualify) for them.

Please Contact **Karla Stoner**
(301)874-3250 or Email: bloomforge@peoplepc.com

A trip to the 2012 National Clydesdale (and Shire!) Sale

I had the distinct privilege of traveling to Howe, Indiana to attend the 2012 National Clydesdale Sale at the end of April. What a fantastic set-up, with all indoor facilities and several draft horse supply vendors in place as well. Howe, Indiana is easily accessible from the Chicago airports and situated close to the lovely town of Shipshewana, a horse-persons enjoyable vacation. This sale is definitely NOT your typical horse sale. There were over 100 Clydesdales in attendance and the stall decorations and horses were impeccably turned out.

This sale offered Shire breeders a fantastic new opportunity to market their horses to a national audience at an established venue. There were 12 registered Shires in the sale from three Shire breeders. A special thank you to Bob Taylor and family, Janet Long and the Cournoyer family and Cindy Temaat for entering and prepping their Shires for this event. All of the Shires were well fit and looked fantastic. Long-time reputable Clydesdale breeder, Barry Costagnasso, remarked that "you have a nice turnout of good Shires for your first sale, the first Clydesdale sale only had 4 horses." Regardless of being at the end of the sale, the average price for Shires was right around \$2500 and only 4 horses were "no-sale'd." All of the horses that "no-sale'd" were eventually sold back at the stalls after the conclusion of the sale so it was a successful event. Congratulations go out to all of the people who purchased Shires through this sale. Every "sale" has to start somewhere and I believe that this was a fantastic "start" for the Shire breed. Events like this sale allow us to gather in one place to buy/sell horses and will only help to market our amazing horses in this ever-changing market place.

Respectfully Submitted by Kim Murchison Pictures Taken by Charity O'Dell



NEW!

Scotch Bottom Shoe Pin

\$60.00 Each / \$5.00 Shipping

~ ASHA Exclusive ~

Made from 925 Silver

They were custom designed by a jeweler in Houston of a Scotch Bottom, similar to the one Vicky wears as her good luck pin.

First 20 Pins Donated by: Hillary Lamanna

ALL PROFITS TO ASHA

For Ordering Please Contact:

Karla Stoner (301)874-3250 Email: bloomforge@peoplepc.com

Payment Must be Made Before Shipping



Wrapping Hocks:

First Aid / Emergency Care - Jun 16th, 02

A horse uses its hock in nearly everything it does—from stopping and standing to walking and galloping. Constant use and a prominently exposed point make hocks vulnerable to stress, fatigue and traumatic injury.

Your veterinarian may recommend a hock bandage in any number of situations, such as: following surgery; providing joint support for a weak foal; protecting a wound; or reducing heat and swelling in a strained joint.

Hock bandages are used to:

- Prevent or reduce swelling and edema
- Reduce motion in the joint
- Provide support for a weak or injured joint
- Protect a wound or surgical site from contamination or trauma
- Aid in the healing of wounds
- Absorb fluids (exudates)

The Challenge

Applying a hock bandage is not without its challenges. Because of the shape and motion of the joint, it requires special techniques to make the hock bandage safe, secure and effective.

Horses also tend to react more to a hock bandage than a lower leg bandage, and may be inclined to kick, fight or fidget. Stay alert and be prepared to move out of harm's way if the horse reacts adversely to its hock bandage.

As with any type of bandage, a hock bandage can be hazardous if applied incorrectly. There is always the risk of injury to circulation, and to the tendons and ligaments if the layers are not applied smoothly, evenly and with the right amount of tension.

If you have never bandaged a horse's legs before, ask your veterinarian or an experienced equine professional to demonstrate the proper techniques. Practice under his or her supervision before doing it on your own.

Bandaging Materials

Because of the bandage's location, you will need materials that readily conform to the shape of the hock and permit movement without slipping or loosening. If the bandage will cover a wound or surgical site, the materials should also be sterile.

You will need:

- Sterile, Non-Stick Gauze Pads or dressing to cover wounds
- Sheet Cotton, Roll Cotton, or Combine Cotton for padding
- Stretch Gauze or Bandaging Tape such as 3M Vetrap Bandaging Tape at least 2-3 inches wide for support.
- Stretch Adhesive Tape such as Elastikon, to secure the bandage.

Hock Bandaging Guidelines

1. Cover the wound or surgical site with sterile, non-stick gauze or dressing.
2. Surround the hock with soft, absorbent padding, such as roll or sheet cotton or combine sheet at least two inches thick. Padding should extend 4-6 inches above and below the point of the hock and lie flat and wrinkle-free against the skin.
3. Begin wrapping with support fabric well below the point of the hock (approximately one-half inch above the edge of the padding).
4. Wrap front to back, outside to inside, spiraling upward (clockwise in right legs, counterclockwise in left legs). Exert just

enough pull to stretch the fabric to half its maximum extended length.

5. Overlap each preceding layer by 50 percent using smooth, uniform tension to compress the padding without forming lumps or ridges beneath the bandage.

6. Begin a figure 8 pattern just below the point of the hock by extending the bandage from inside the leg below the point of the hock to the outside of the leg above the point of the hock. Continue the wrap around the back of the leg and then extend it downward inside to outside.

7. Repeat this figure 8 pattern working up the leg until the bandage extends 4-6 inches above the point of the hock, covering the padding to one-half inch of the edge.

8. Depending on the nature and location of the injury, your veterinarian will advise you whether or not to cover the point of the hock with the support layer. (The horse may be more comfortable if the hock is not completely encased.)

9. When bandaging, use enough pressure to minimize swelling and keep the bandage in place, but never wrap so tightly that you cannot easily slip a finger between the top of the bandage and the tendon that runs up the back of the leg above the point of the hock.

10. Do not wrap too loosely as the bandage may slip or fail to do its job.

11. Secure the bandage at the top and bottom with an adhesive tape such as Elastikon.

12. If you have problems with the hock bandage slipping, begin by wrapping the lower leg from coronet band to several inches below the hock.

* This provides a foundation for the hock bandage and will help keep it in place. This technique is especially useful in post-legged (straight-hocked) horses and is usually used when horses have edema or swelling below the hock as well as within the hock area.

Special Considerations

Because hocks are such vital structures, any injury to the joint or immediate area should be evaluated by a veterinarian.

If a hock bandage is required, do not be disappointed if your initial efforts are less than satisfactory. Even under the best of circumstances, the hock is a difficult place to secure a bandage. Work with your veterinarian, and, if necessary, employ him or her to change the bandage as needed.

Following are some additional considerations:

- A horse with a condition requiring a hock bandage should be confined to a stall or small run unless otherwise directed by your veterinarian.
- Check the bandage several times a day to make sure it has not shifted or loosened.
- Make sure the bandage does not cut off circulation, pinch the tendon at the back of the leg, create pressure sores, or cause discomfort.
- Monitor and evaluate the horse carefully. If swelling develops above the bandage or at the point of the hock, or lameness increases, contact your veterinarian.
- If the horse has an elevated temperature, becomes depressed or irritable, or loses its appetite, consult your veterinarian.
- Change the bandage at least every 2-3 days, or immediately if it becomes wet or soiled.

If you have any further questions or concerns about hock bandaging techniques, contact your local equine veterinarian.

This information was produced through a joint venture between 3M Animal Care Products and the American Association of Equine Practitioners.

Summer's Coming: Hot Weather Care for Horses

By Hayley Donahue, DVM

As the summer approaches, owners need to consider management practices needed to help their horses get through the hot weather. It is important to understand the normal physiology of the horse when exercised in hot or humid weather. During exercise the body generates heat faster than at rest. A large percentage of the stored energy used by the body during physical activity is converted to heat rather than motion. The more strenuous the activity the more body heat is generated. Additional heat generated during exercise results in an elevation of core body temperature from resting values (range, 99-100 F) to an excess of 102-106°F. The horse's body attempts to cool itself by dissipating excess heat via sweating. In response to exercise, sweat glands are triggered to produce sweat. The subsequent evaporation of sweat carries heat from the body and helps to lower body temperature to a safe range. An important point to remember is that high humidity decreases the sweat evaporation rate, therefore slowing the cooling process. This is especially important in the heat and humidity of the summer. High temperatures and humidity decrease the horse's ability to cool. If the rate of body temperature cooling is not satisfactory to match the ambient conditions, heat stress can develop.

Horse owners can help their horses cool by employing four management practices. These include good ventilation, encouraging water intake, carefully planned exercise, and actively observing for signs of heat stress. One way to help horses get through hot weather is to ensure that barns are adequately ventilated. This can be done by opening doors and windows. Fans can also be used to increase air flow. A fan over each stall will move air directly over the horse. Fans with mist attachments can also be used, but may not provide any additional benefit to a regular fan in humid areas. Assuring adequate water intake is critical. On average a 1,000 lb horse needs 8 to 10 gallons of fresh water per day. As the air temperature increases, even non-exercising horses sweat and consume more water. When exercising at temperatures above 70°F, adult horses may consume 20 to 25 gallons of water per day. An owner can encourage the horse to drink water by providing salt blocks or loose salt in the feed. Horses should be offered fresh water frequently and have access to water at all times. It is also advisable to offer an additional bucket containing commercially available horse electrolyte solutions mixed with water. However, the provision of fresh water is always required when electrolyte water is offered. This can

be beneficial especially if the horse is losing electrolytes through sweating. However, some horses will not willingly drink electrolyte solutions mixed with water so an alternative water source should be made available. An additional management practice to decrease heat stress is avoiding exercise during the hottest time of the day, typically from 11 a.m. to 3 p.m. Turn horses out to pasture at night, especially if the pasture is lacking shade.

In addition to following these management recommendations, owners should be aware of the signs of heat stress suffered by horses in the summer. It is important to understand and recognize the signs of heat exhaustion and to know what to do when these signs have been observed. Horses with heat exhaustion may continue to sweat excessively or in severe instances may stop sweating altogether. Signs of heat stress include weakness, stumbling, increased respiratory rate (> 32 breaths per minute), and an increased rectal temperature (>102 °F) after removal from exercise. Notify your veterinarian immediately if any of these signs are observed. Before your veterinarian arrives owners should provide frequent small amounts of cool water for the horse to drink. To aid in heat dissipation the horse can be bathed in cool water starting at the feet and slowly working up the legs. Alcohol baths (isopropyl) can also be helpful to lower elevated body temperatures. If possible stand the horse in the shade and/or in front of a fan. Once you have initiated first-aid, continue to take and record the horse's rectal temperature every 15 minutes until the veterinarian arrives. In severe cases it may be necessary for your veterinarian to administer intravenous fluids to combat dehydration and electrolyte imbalances associated with heat exhaustion. Your veterinarian also will consider the use of nonsteroidal anti-inflammatory drugs such as flunixin or phenylbutazone to aid in patient well-being and to aid in the reduction of elevated body temperature. In summary, owners should understand what they can do to avoid heat stress in their horses and to recognize the signs of heat stress so that prompt veterinary care can be provided when necessary.

Article provided courtesy of Purdue University's "Equine Health Update" newsletter.

http://www.aaep.org/health_articles_view.php?id=307

WOULD YOU LIKE TO RUN : FOR THE BOARD OF DIRECTORS?

The Nominating Committee is looking for candidates to run for five board positions that will be vacated December 31, 2012. A Board member is elected to a four-year term and accepts the responsibility of participating in key decisions that affect the way the ASHA functions. They are expected to attend one meeting a year at their own expense, regardless of where in the U.S. it is held, and be willing to take part in quarterly board teleconferences. Board members also serve on committees and volunteer for other duties as needed on behalf of ASHA. ASHA needs new people and fresh ideas to keep moving forward into the future. If you love Shires, want to promote and preserve the breed and like working with a diverse group of people as a team, give serious consideration to volunteering your time and talents to the Board.

Anyone interested in running is requested to notify one of the committee members listed below in writing or by email, before July 20, 2012. Complete nomination guidelines and election procedures are posted on this page, and in the members section of the ASHA web site. We encourage you to contact any Nominating Committee member or board member if you have questions about the position.

Karla Stoner, Chair 8401 Peters Road Frederick, MD 21704 Phone: (301) 874-3250 bloomforge@peoplepc.com	Richard Cameron 970 Lariat Lane Ellensburg, WA 98926 Phone: 509-312-9342 rockinruna-wayfarms@hotmail.com
Janet Long 34 Howards Lane Epsom, NH 03234 Phone: (603) 930-6975 janet@northeastshires.com	Burt Stanley 488 Hwy AD Mountain Grove, MO 65711 Phone: 417-926-1170 showmeshires@wildblue.net
Dawn Wikel 65802 County Road 665 Paw Paw, MI 49079 Phone: (816) 547-6972 shires99@msn.com	

PROCEDURAL GUIDELINES FOR NOMINATIONS AND ELECTIONS TO ASHA BOARD OF DIRECTORS

- I. The Nominating Committee shall be in place by the last day of March of the election year.
 The Committee shall consist of two Board members and three members at large, all in good standing and eligible to vote as defined by the By-Laws.
 Members of the Committee are NOT eligible to run as candidates.
- II. In the spring newsletter shall be printed:
 The nominating process.
 The name of the chair and committee members with their postal address, e-mail address and phone number(s).
- III. The final ballot shall be of sufficient number of candidates to fill the Board positions to be elected plus at least one.
 Only members in good standing and eligible to serve as defined by the By-Laws are eligible to run.
 The Nominating Committee may solicit volunteers to become candidates for the Board. Members wishing to run must contact a committee member **IN WRITING** by USPS or by e-mail by July 20.

By August 1, all candidates will receive a short form requesting the following information:

Name, address, phone number, and e-mail address.

A statement of ability and commitment to attend membership and board meetings and do committee work should they be elected.

A brief statement of strengths and contributions candidates can bring to the board (200 words max)

Brief responses to a set of questions posed by the committee and regular members.

The forms shall be completed and returned to the Chair postmarked no later than August 20. Forms postmarked after August 20 will not be considered.

1. The Chair shall forward copies of the completed forms to all committee members by August 30.

All completed forms will be sent to the Secretary with the final slate.

The Committee will confirm eligibility, review the written responses of all candidates and determine the final slate of candidates. The Chair will then notify all committee members, board members, and the ASHA Secretary of the final slate by September 10.

The final slate shall be printed in the fall newsletter with the candidates' names, postal and email addresses, phone number(s) and personal response forms.

There shall be no maximum number of candidates.

IV. The ballot shall be sent to all eligible voting members, as defined by the By-Laws, by first class mail no later than October 31. No ASHA correspondence unrelated to the election shall be included in this mailing.

The candidates shall be listed alphabetically, by last name, on the ballot.

Each ballot shall include a return envelope with the selected Notary Public's name and address as addressee and return address. The envelopes shall also be clearly marked **BALLOT ONLY - Do Not include any other ASHA correspondence.**

V. The mailed notice will also include the number of candidates to be elected, the deadline for return of ballots and the date, location and time the count is to take place.

A. Any ballots postmarked after the deadline date will not be counted.

B. One week after the deadline stated in the notice, the notary shall present all ballots, unopened, to the ASHA Secretary and any other election clerks or assistants to verify all are sealed. Following this verification, the Notary will open all envelopes in private and verify voter eligibility from the list of eligible members provided by the ASHA Secretary. The Notary will then remove the member information from the ballot, placing the ballots in one container and the member information in another container.

C. When verification is complete, the ASHA Secretary and any assistants shall tabulate all valid ballots in the presence of the Notary.

D. In the event a situation arises where the ASHA Secretary is unable to take part in the counting of the ballots, the President may appoint a person or committee to do so, as defined by the By-Laws.

E. Upon finishing and verifying the outcome, the Secretary shall immediately notify the Nominating Committee Chair and the President of the results.

The Chair shall notify the Committee, the candidates, and the board members of the results as soon as possible.

The results must not be released to anyone else until December 21 or until all of the above have been notified, which ever comes first.

In the case of a tie, the Chair will contact the candidates involved. If one wishes to withdraw, the other shall be the new board member. If both wish to continue, their names shall be placed in a container and a Notary Public shall draw the name of the winner.

The new board members shall be announced in the winter newsletter.

Where do I Find Draft Horse Stuff?

Quick links to hard to find Items. Feel free to share your links with the editor. We will print them to Share! This is a question that runs through many draft horse owner's minds. Many of us know where to get the items for our saddle horses but now our Shire friend. Next bulletin we will print another table of good links. Please share them with us.

COMPANY	LINK	PRODUCTS/SERVICES
Robert Carriages Inc. 885 Haut Petit Rang St-François, Saint-Pie, Quebec Canada, J0H 1W0 Office: 450-772-5221 Toll free: 1-800-438-5221 Fax: 450-772-0755 Email: info@robertcarriages.com	www.robertcarriages.com	Carriages & driving vehicles.
Exodus Breeders Corporation 5470 Mount Pisgah Road York, PA 17406 Toll free: 877-396-3874 Office: 717-252-0721 Fax: 717-252-4221	http://www.exodusbreeders.com	Equine breeding equipment & information; also breeding services- collection, freezing & A.I.
Equestrian Collections	http://www.equestriancollections.com	Discount riding apparel & horse supplies; inventory varies but good prices when the products are available.
My Draft Horse Super Store	https://www.mydrafthorse.com	Decorations, harness, harness parts, vehicles, single & double trees—much more.
E Nasco	http://www.enasco.com/farmandranch	Many vet & equine supplies; Missouri AV & equipment.
Glory Bee Natural Foods	http://www.glorybeefoods.com	Essential oils & natural products.
BIC Warehouse	http://www.bicwarehouse.com/wettable-	Dusting sulfur
CQ Concepts 5414 Business Parkway Ringwood, IL 60072 Phone: 815-653-3855 Fax: 815-653-3857 E-mail: info@cqconcepts.com	http://www.cqconcepts.com/chem_sulfur.php	Dusting sulfur at the lowest bulk prices.
Heartland Veterinary Supply	http://www.heartlandvetsupply.com	Semen shipping equipment & supplies--other equine needs as well.
Will Lent Horse Shoe Co.	http://www.willlent.com	Clinics, draft shoes, nails, all sorts of shoeing supplies- including Scotch shoes.
Shipshewana Harness Location: 815 N. Van Buren, Shipshewana, IN (on St. Rd. 5, north of town) Mailing Address: PO Box 745, Shipshewana, IN 46565 Phone: 260-768-7254 (voice) Fax: 260-768-7131	http://www.shipshewanaharness.com	Grooming sawdust, harness, Myler bits, grooming, decorations, videos.
Schneider Saddlery 8255 East Washington St. Chagrin Falls, OH 44023 Store Hours: Daily Hours (Mon.-Fri.) 10:00 AM - 6:00 PM (EST) Sat: 10:00 AM - 5:00 PM (EST)	www.sstack.com	Excellent draft size blankets, foal blankets, many other tack items, Ultra Grooming Products are excellent.
Valley Vet Supply	http://www.valleyvet.com	Vaccinations & various equine supplies.
Young Living	www.youngliving.com	Essential oils.
Rocky Mountain Oils	http://www.rockymountainoils.com/	Essential oils.
ARS Equine	http://www.arssales.com/equine/	Equine breeding equipment & supplies.
SMS Breeding Phantom	http://www.smsbreedingphantoms.com	"Tell her you know": Leanne Hoagland. Very affordable & solid Phantom.
Meader Supply	http://www.meadersupply.com/	Harness, decorations, bells.
Blue Ribbon Now Horseflowers.com	http://www.horseflowers.com/	Decorations.
Troyer Auction Services	www.troyerauctions.com	Lots of horses, harness, tack & equipment, great selection for any level of horseman; two big annual sales every April & October.
My Draft Horse Stuff	www.drafthorcestuff.com	All sorts of classifieds.
Stateline Tack	http://www.statelinetack.com	Wholesale tack & products.
Professional Horseman's Supply Phone: 1-800-989-1500 Through Dover Saddlery	www.doversaddlery.com/phs	Wormer & stable supplies at good prices.
Got Print	www.gotprint.com	Upload & print business cards, flyers, brochures & booklets, very affordable & professional.

Update on Shire Pedigree Analysis Project

Rebecca Splan, PhD and Taylor Stephens
Virginia Tech M.A.R.E. Center, Middleburg, VA

For the first time, scientists are characterizing the amount of genetic diversity present in the American Shire Horse population. Over the past several months, Virginia Tech researchers Rebecca Splan, PhD, and graduate student Taylor Stephens, have been analyzing pedigree data from more than 86,000 registered Shire horses of American, Canadian, and English origin. Using specialized software to analyze the data and determine several different parameters of genetic diversity, their preliminary findings indicate that the level of genetic diversity present in today's Shires was still relatively high, and similar to that of other breeds of comparable size and pedigree depth.

Calculations were performed relative to a group of American Shire horses belonging to the most recent generation (horses born 2003-2011, N = 1142), with pedigrees traced back to the oldest known ancestors. Among the study's key findings was the impact of a population bottleneck that affected the Shire breed in the mid-20th century, when numbers worldwide dropped from a quarter million or more to only about 1000 animals (Figure 1).

Loss of genetic material due to this bottleneck is reflected by the average level of inbreeding in the breed, which has been increasing since the 1950s. The average inbreeding coefficient in the current generation was 3.9%, with a slightly higher 5% for horses born in 2011. However, inbreeding coefficients of American Shires are similar to those found in other small breeds, and current figures do not indicate the general population is at risk for negative effects of inbreeding such as decreased fertility or survivability.

Also revealed in the study was the notable outcome that most modern Shires in the United States originate from a relatively low number of founders. Most of the genetic diversity present in the population can be explained by only 100 influential ancestors, with the three most influential stallions determined to be His Excellency (1941), Crossfields Supreme (1959), and Newton Fields Ambassador (1945), who together account for 23% of the genetic material in today's horses. Further, it was found that today's Shires trace to one of six sirelines, with 96% of horses tracing to just three foundation sires, Champion's Clansman (1910), Ponton Bouyant (1939), and Crimwell Mimic (1936) (Figure 2).

The research team is currently exploring the influence of pivotal early American sires, and determining which mare families have been the most prolific in the development of the American Shire Horse. Further work could also help identify those genetically unique animals within the breed that might possibly be targeted for semen cryopreservation.

This research was supported by a grant from the American Shire Horse Educational Foundation.
The VA Tech research team expresses their sincere appreciation for the funding.

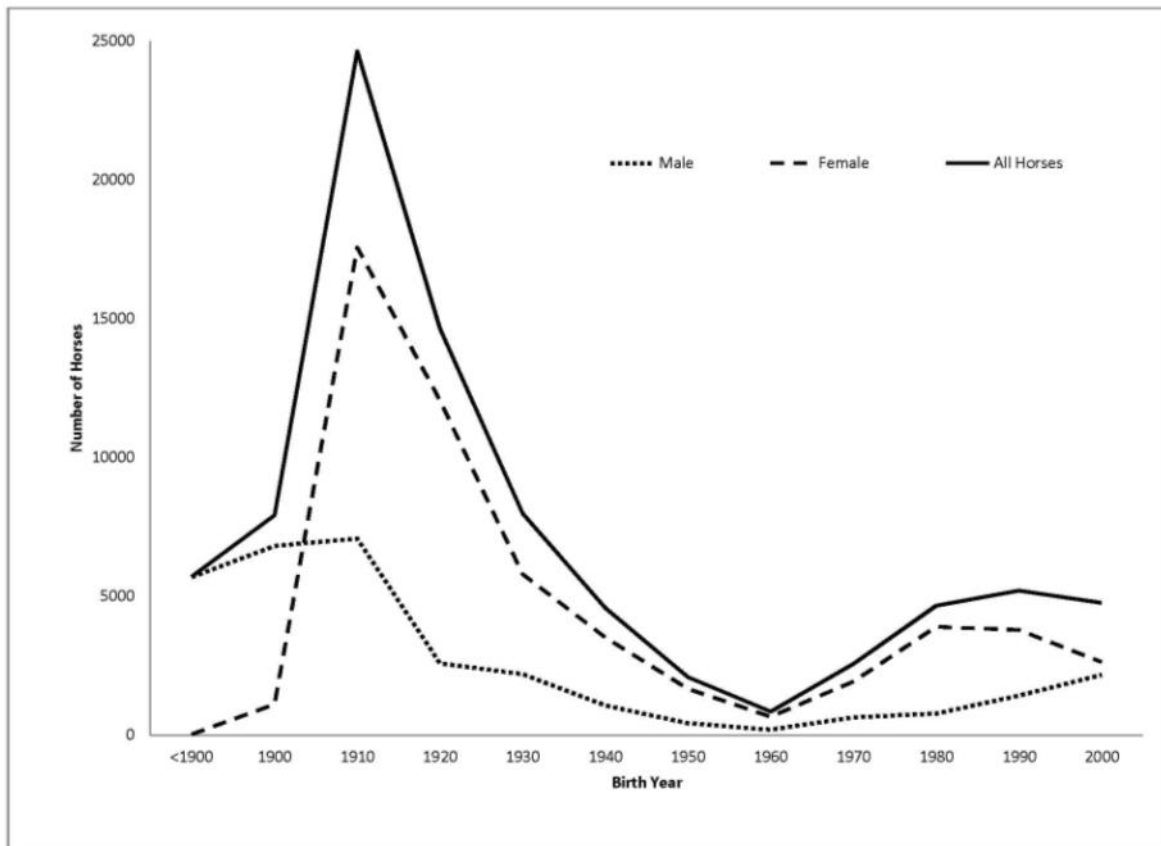


Fig. 1: Change in registered Shire population from ~1900 to present. Sharp decline resulted from mechanization, world wars and cessation of most heavy horse breeding. Many Shire bloodlines were lost in this period.

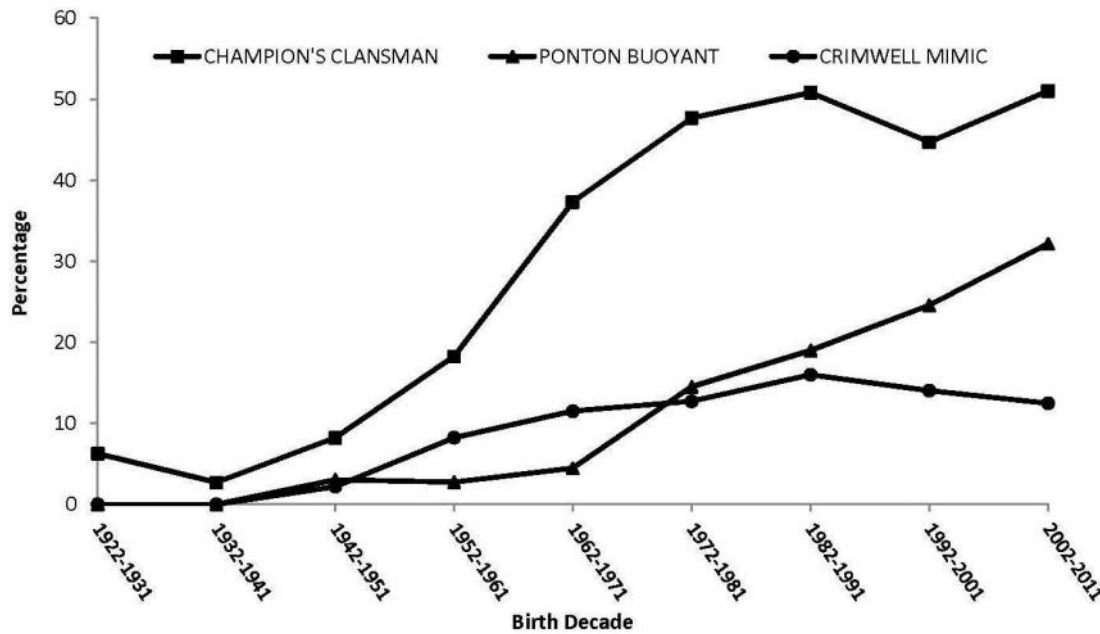


Fig. 2: Percentage of registered foals in U.S. carrying the top founding sire bloodlines. (Left)

2012 Stallion Reports

It is that time of year again when we plan for our 2013 foal crop.

Please submit your stallion reports by November 30th!!

All stallions and owners will receive a free breeder's listing in the Winter Bulletin



Statement of Position on Animal Care*

The American Shire Horse Association encourages Shire owners to:

- Provide a high standard of livestock health;
- Manage livestock in a humane manner;
- Use and maintain transportation and handling facilities that provide livestock health and safety;
- Provide feed and water to maintain livestock health and productive ity;
- Consult with a licensed veterinarian concerning animal health care practices;
- Use approved livestock health products according to label directions;
- Sustain and conserve natural resources by proper management of land, air, water and wildlife;
- Support and maintain rural and family traditions important to our society.



*Resource: National Pedigreed Livestock Council (text provided by member Sharon McLin)

SAC Program Rate Change for 2012

Shire and Shire Sport Horse Nomination
\$ 15 Per Horse

Information can be found at:
www.shirehorse.org—under the shows tab

~ All ASHA Regional/ National Performance Classes to count for points.

*** Earn Points at many of your Local events.*

Feeding Horses Post-Colic

by: Erica Larson, News Editor
June 25 2012, Article # 20213

Note: This article is part of TheHorse.com's ongoing coverage of topics presented at the 2012 Kentucky Equine Research Conference, held May 17-18 in Lexington, Ky.

Most horse owners understand how to handle a colicking horse, but managing a horse post-colic is a different animal. Feeding choices for horses post-colic could help or hinder the animal's chance for a full recovery.

During a presentation at the 2012 Kentucky Equine Research Conference, held May 17-18 in Lexington, Ky., Amelia Munsterman, DVM, MS, Dipl. ACVS, ACVECC, clinical lecturer in equine critical care medicine and surgery at the Auburn University College of Veterinary Medicine, gave a presentation on feeding horses with or after colic.

The Relationship Between Feeding Choices and Colic
Munsterman first explained that horses evolved to consume small quantities of high fiber, low carbohydrate feeds continuously. Many modern-day feeding techniques, she said, contradict these nutritional needs. Tactics such as stall confinement and large meals, for instance, can lead to digestive upset and colic, she said.

Munsterman also discussed associations between different feed types and colic:

Pasture: Munsterman said that although horses were designed to consume grass throughout the day, today's pastures often contain different grasses with high levels of fermentable carbohydrates that can potentially cause seasonal colic. One study she discussed found no decrease in colic risk with turnout, while another case-controlled study she discussed revealed horses not allowed turnout or with a recent reduction in turnout were three times more likely to develop colic than horses allowed ample pasture access. She noted that in the first study, lack of water available in the pasture doubled the colic risk.

Dried Forage: Hay is a popular forage choice for horses, but Munsterman noted it too has been associated with colic development. One study she discussed showed that consuming large portions of low-quality forage increased the risk of impaction colic, and another revealed that horses consuming round bale hay had a 2.5 times greater risk of colicking. Additionally, she noted, abrupt hay changes have been implicated in colic cases. Finally, she explained that researchers have linked both coastal Bermuda hay and alfalfa hay to colic; the former contributing to ileal impactions (a blockage forming in the small intestine) and the latter creating a dietary tract environment that promotes enterolith (intestinal stone) formation.

Concentrates: "Carbohydrate-rich feeds, including grains, are the most commonly implicated dietary cause of colic in the horse, likely due to the well-documented influences of this substrate on the flora of the equine gastrointestinal tract," Munsterman said. Research study results have found several associations between concentrates and colic risk, she said. One found that feeding more than 2.7 kilograms of oats per day increased colic risk, while another identified whole corn as a major risk factor. Studies have yielded conflicting results regarding whether pelleted feeds increase colic risk, but researchers have shown that changes in the concentrate a horse consumes elevates colic risk.

Although research has provided some conflicting results, Munsterman offers proven feeding suggestions to prevent colic:

Provide a consistent diet, as diet changes increase colic risk; Ensure at least 60% of the horse's diet is forage (hay or pasture), and ensure this amounts to a minimum of 1 to 1.5% of the horse's body weight per day if weight loss is needed; healthy horses should consume about 2% of their body weight daily;

Keep concentrate consumption to a minimum, and break concentrate meals into several small servings throughout the day;

If additional energy is required in the horse's diet, consider concentrated sources such as vegetable oil, beet pulp, or soy hulls; and

Make all dietary changes gradually over the course of seven to 10 days.

Feeding After Colic

Munsterman relayed that different types of colic require different post-treatment feeding plans. She outlined several different types of colic and made suggestions for refeeding.

Uncomplicated Colic: Simple colic cases that resolve quickly and relatively easily are considered uncomplicated. These resolve with medical treatment, and the horse generally recovers in 12 to 24 hours, she said.

In these cases, Munsterman said, feeding can resume as soon as normal gut sounds (borborygmi) and fecal production return. She recommended providing small amounts of good-quality grass hay every four to six hours for the first 12 to 24 hours. The horse's forage rations can increase and return to normal over 24 to 48 hours if no adverse reactions are noted, she said. She noted the importance of ensuring the horse stays hydrated post-colic. Avoid feeding concentrates for 10 to 14 days post-colic, she said, to avoid any potential gastrointestinal disruption.

She also recommended evaluating the horse's diet, environment, and feeding schedule to try to identify any predisposing risk factors for colic.

Duodenitis-Proximal Jejunitis: Researchers have shown that inflammation of the small intestines, known as duodenitis-proximal jejunitis (DPJ) or anterior enteritis, often occurs in horses with pasture access, Munsterman said. Treatment for DPJ can be either medical or surgical, depending on the colic's severity, she said. Both medical and surgical cases have a good prognosis for recovery if treated aggressively and if the disease is "allowed to run its course," she added.

Horses with DPJ often can't consume food normally due to ileus (lack of intestinal motility) and resulting gastric reflux, she said. Thus, to avoid excessive protein loss, veterinarians often administer parenteral nutrition (through an intravenous catheter), she said, and continue this until the horse can consume regular food without gastric reflux.

"Enteral feeding can begin once progressive motility is confirmed by a lack of net gastric reflux and ultrasonographic confirmation of small intestinal contractions," she said. At that point, Munsterman recommended providing hay, complete feed, or alfalfa pellets at 25% of the daily ration, divided into meals every two to four hours. The horse should be able to return to full rations in two to three days, she said.

For these horses, avoid feeding concentrates or grass with high fermentable carbohydrate concentrations, she said, and keep the horse off grain for about two weeks. If the horse needs to regain body condition, consider feeding high-protein forages or adding vegetable oil to the feed, she said.

Small Intestinal Strangulation: Regardless of the cause, veterinarians typically treat this dangerous condition surgically. Munsterman said the small intestine is sensitive to manipulation, so post-operative ileus is a common occurrence.

To prevent or reduce the chances of ileus, Munsterman said some veterinarians have adopted a newly validated practice of offering food to horses as soon as possible after recovering from anesthesia. She outlined one plan described by Freeman et al. of providing

water 12 to 18 hours post-operation and then offering handfuls of alfalfa hay at 18 to 24 hours. Build the horse up slowly to 75% of his total feed rations over the next day or two, she said.

If the horse isn't able to consume food enterally (via the gastrointestinal tract), parenteral nutrition is an option. "It is still unclear as to any benefits of providing parenteral nutrition to surgical colic cases, with the downside of an increase in cost to the client," Munsterman cautioned. "Based on the lack of clear evidence, most horses are simply held off feed until ileus subsides."

Ileal Impactions: Veterinarians can often treat ileal impactions medically; however, severe cases might require surgery, Munsterman said. In this event, refeeding practices are similar to those for small intestinal strangulations, she said. Most ileal impactions resolve within 12 hours, so parenteral nutrition isn't often required, she said. Feeding can resume once intestinal motility resumes.

Munsterman cautioned that because studies have implicated coastal Bermuda in ileal impaction development, avoid providing recovering horses with this type of forage. Instead, aim for high-quality, first-cutting hay, and ensure sufficient water intake, she said (if Bermuda is the only forage available, Munsterman recommended feeding good-quality, first-cutting). If good-quality hay is not available, owners can substitute pelleted complete feeds, chopped hay, or pasture.

Large Colon Impactions: Veterinarians treat the most common colic cause in horses, large colon impactions (a blockage forming in the large intestine), similarly to ileal impactions. Feed should be withheld during treatment, Munsterman said, but feeding should not be delayed once treatment has resolved.

"Good-quality forages, ideally alfalfa hay, should initially be provided in small amounts four to six times daily, with a gradual increase over 24 to 48 hours to normal rations," she said. Upon reintroducing feed, she recommended providing free-choice hay to reduce the risk of gastric ulcer development.

Green grass or alfalfa-based diets could provide a laxative effect, she said, and might help prevent recurrence in recovered horses. Additionally, she advised promoting water intake with salt or electrolyte supplementation to prevent impactions.

Sand Impactions: Veterinarians generally treat sand impactions medically, similar to feed impactions, Munsterman said, but severe cases might necessitate surgical correction. The key to feeding horses post-sand impaction colic is to remove the animal from the sandy area, if possible. Additional steps include: Avoid feeding the horse on the ground, if possible; Use large tubs and/or rubber mats to prevent feed from spilling on the ground; Avoid using overgrazed pastures; and Provide horses with a psyllium supplement for one week, monthly, as a preventive measure.

However, "the most effective method of clearing sand from the gastrointestinal system is to provide 2.5% of body weight per day of hay," said Munsterman. "The bulk alone is capable of removing almost 95% of ingested sand and was better in a controlled trial than psyllium, mineral oil, or wheat bran."

Enteroliths and Fecaliths: Enteroliths are intestinal stones are made up of minerals, such as magnesium ammonium phosphate salts, that build up around a foreign object a horse eats but does not digest. Similarly, fecaliths are compacted fecal material in the intestine. Munsterman noted that surgery is the most common treatment for both conditions. Owners should feed post-treatment horses similarly to horses recovering from impactions, she said. Munsterman noted owners can take preventive nutritional measures post-surgery to try to prevent future stones from forming, including: Feed less than 50% alfalfa hay to predisposed horses, as alfalfa's high protein content has been statistically linked to enterolith formation; Wheat bran is also suspected to encourage enterolith formation; however, it has never been linked definitively. Thus, consider limiting

wheat bran intake for affected horses; Avoid stall confinement for more than half the day, high-protein diets, low-fiber diets, and intermittent meals; and Consider monthly psyllium treatments or feeding 2 to 2.5% of the body weight in hay daily to help clear ingesta that could lead to an enterolith or a fecalith.

Ascending Colon Displacement: Munsterman explained that the ascending colon moves freely in the abdomen, so displacements aren't uncommon. Medical treatment is possible, however many horses are taken to surgery, she said. Post-treatment horses should be fed in a similar manner as large colon impactions, she said. Feed a good-quality forage with long fibers to "increase the bulk of ingesta in the colon." Avoid concentrates for 10 to 14 days after treatment. Munsterman recommended eliminating or reducing the amount of concentrates affected horses consume and instead basing the diet on good-quality fiber sources and ensuring adequate water intake.

Large Colon Torsion: Veterinarians always treat this severe and life-threatening form of colic surgically, Munsterman said. Post-surgical feeding depends on the severity of the torsion (twist) and what was done during surgery.

In horses treated early with minimal intestinal resection during surgery, feeding can begin as early as six to 12 hours after treatment, she said. If the torsion is serious in nature and the veterinarian performs extensive surgery and resection, feeding will need to wait at least 12 to 24 hours, she said. If some of the intestine has become ischemic (has a lack of blood flow), horses might not be able to eat for up to 48 hours post-surgery, she added.

When the horse does eat, provide good-quality forage for four to six hours, Munsterman relayed. Feed intake can be increased over the next few days, and the horse should be able to consume his full ration by the third day. Once the horse has been fully reintroduced to feed, he will require a highly digestible diet to maintain body condition, due to the colon resection, she noted. Special considerations for these horses include:

The horse likely needs to consume good hay with high protein content (alfalfa) at a higher quantity than maintenance horses to prevent weight loss; Affected horses need to consume more water than healthy horses (sometimes up to eight liters more) to account for excess water loss in the feces; As the digestive tract rebuilds itself, the need for a specialized diet will diminish; and If needed, provide oil or soybean meal to encourage weight gain post-surgery.

Cecal Impactions: Munsterman said cecal impactions are the most common cecum disorder resulting in colic, and depending on the case, veterinarians can treat them medically or surgically, she said. "Feeding after cecal impactions is complicated by a high rate of recurrence," Munsterman said. Thus, she recommended refeeding slowly and gradually. She suggested only providing water for the first 12 to 24 hours post-resolution, followed by hand-walking and grazing for up to 15 minutes to promote intestinal motility. Next, she suggested providing low residue feeds--such as complete or alfalfa pellets--and reintroducing hay to the diet very gradually. She suggested alfalfa because of its laxative effects.

Cecocecal Intussusception: This type of colic occurs when the cecum telescopes into itself and is always surgical, she said. The severity and procedures performed during surgery dictate how soon post-operatively the horse can begin eating.

Some horses can eat in as little as 12 hours, while others must wait 36 to 48 hours, she relayed. When refeeding begins, offer water before adopting a feeding schedule similar to the one outlined in the "large colon impactions" section. Specifically, grazing promotes cecal motility, so it's advisable to allow the horse access to grass.

Small Colon Obstructions: Veterinarians select either medical or surgical treatment based on the obstruction's severity. The two treatment methods have slightly different refeeding procedures, she noted.

Medically managed horses can begin drinking water in the first 12 to 24 hours post-resolution, she noted. After that, she recommended using a similar feeding schedule as one would for a horse with ascending colon impactions. She recommended a forage-only diet for the first few days after impaction resolution.

BREEDERS LISTINGS:

-Looking for a Shire-
Contact one of our Breeders

Midnight Star Breeders

Brit and Sharon McLin
P.O. Box 957 Silt, CO 81652
(970) 876-5979
msbshire@sopris.net
Breeding Quality Shires Since 1978

Northeast Shires

Standing 3 Stallions
Embryo & Semen
collect and preserve
ShireHorse.com
603-930-6975

Gentle Giant Shires

Blake and Fran Anderson
R. R. 2; Didsbury, AB T0M 0W0 Canada
Phone: (403) 335-9609
Email: shires@telus.net
<http://angelfire.com/ca/GentleGiantShires>

Jurisdiction of IRS Appeals **By John Alan Cohan, Attorney at Law**



Many taxpayers fear being audited, for good reasons. An extended period of deductions for horse activities, livestock ranching, or other farming ventures can easily trigger an audit. Even with the best of records, IRS auditors are inclined to deny these deductions if there are ongoing losses. Although these industries are crucial to the American economy, the IRS takes a skeptical view towards taxpayers who have a history of losses in these areas.

There are remedies available after an adverse audit decision. Most often, the remedy is to file an appeal with IRS Appeals. Information about this is set forth in IRS Publication 5, "Appeal Rights and Preparation of Protests for Unagreed Cases." Once the case is with IRS Appeals, your returns are re-evaluated by a different staff, and you will have the opportunity to present new evidence, oral clarification, witnesses, and negotiate a settlement with the appeals officer. If you have a good case and a formal business plan that makes economic sense, you even stand a chance of getting the entire matter dismissed in your favor. About 86% of the cases in IRS Appeals end up being settled.

According to the IRS Appeals mission statement, their mission is: "to resolve tax controversies, without litigation, on a basis which is fair and impartial to both the Government and the taxpayer in a manner that will enhance voluntary compliance and public confidence in the integrity and efficiency of the Service."

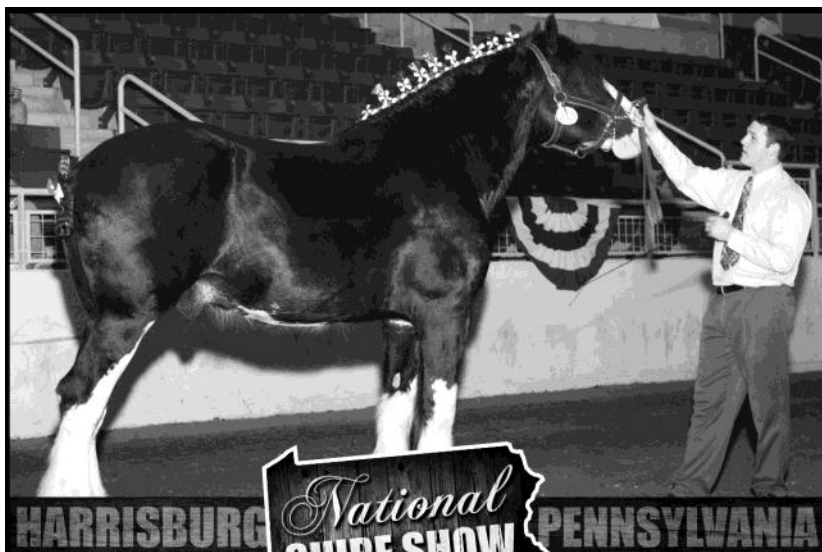
Section 6662 of the IRS Code imposes various penalties that almost always are assessed by the IRS auditor if the audit goes against you. These penalties include an accuracy-related penalty, a separate penalty for negligence, and other penalties. These can also be contested in IRS Appeals. The negligence penalty is based on the notion that your tax deductions were attributable to negligence or disregard for rules or regulations. As mentioned, these penalties are also at issue in IRS Appeals, so that you can provide evidence to show that you reasonably relied on advice given you by your accountant or attorney.

Filing an IRS Appeal keeps open the option of going to Tax Court if your case is not settled in Appeals. Filing an IRS Appeal is time sensitive. It must be done within 30 days of the date of the 30-day letter that informs you of the adverse audit decision.

Often the Appeals officer will ask for additional information. The Appeals officer will evaluate how credible you and other witnesses are, how likely you will be able to prove the legal points of your case, and how good your documentary evidence is. If, for example, you have a formal business plan that makes sense and sets forth how you expect to make a profit, this will be important evidence in your favor. If you have evidence of significant sales or evidence of efforts to reduce costs, this also will be helpful to your case.

Tax planning in advance is always the best approach in operating an activity in the horse, livestock or farming industries, but there is still always the risk of an audit especially if tax deductions are used to offset other sources of income. One of the worst things you can do is to try and get advice from one of the IRS "hot lines" in which you can pose questions to IRS agents. The problem is, first, the information given over the phone is not binding on the IRS. Second, you will likely get different answers to the same question, depending on whom you speak with. Third, IRS agents may not be able to answer complex questions, and how you frame a question will be a factor in what answer you get. And fourth, you will have no documentary evidence to prove what the IRS agent told you.

[John Alan Cohan is a lawyer who has worked in the horse, livestock and farming industries since 1981. He serves clients in all 50 states, and can be reached by telephone at (310) 278-0203 or via e-mail at johnalancohan@aol.com, or visit his web site at www.JohnAlanCohan.com.]



National SHIRE SHOW

HARRISBURG PENNSYLVANIA

KEYSTONE INTERNATIONAL LIVESTOCK EXPOSITION October 4, 5 & 6, 2012

- ▶ AA Level - All North American
- ▶ New Expanded Premiums
- ▶ New Hospitality Services For Exhibitors
- ▶ Double Premier Points
- ▶ New Show Schedule & Classes
- ▶ Judge - Mark Barie, East Bethany, NY
- ▶ Cart, Hitch & Saddle Classes

Show Coordinator: Karla Stoner | (301) 874-3250 | bloomforge@peoplepc.com
www.shirehorse.org/Shows | www.keystoneinternational.state.pa.us

American Shire Horse Association | Myrna Rhinehart - Secretary | PO Box 408, Lake Delton, WI 53940 | secretary@shirehorse.org | www.shirehorse.org

THE AMERICAN SHIRE HORSE ASSOCIATION



ASHA REGIONAL SHOWS

Ohio State Fair
COLUMBUS, OH | AUGUST 2 & 3, 2012

Colorado Draft Horse Classic
RIFLE, CO | AUGUST 5, 2012

Addison County Fair & Field Days
MIDDLEBURY, VT | AUGUST 10 & 11, 2012

Maine State Fair
SKOWHEGAN, ME | AUGUST 17, 2012

New York State Fair
SYRACUSE, NY | AUGUST 28 - SEPTEMBER 3, 2012

Colorado State Fair
PUEBLO, CO | AUGUST 30 & 31, 2012

Central Wisconsin State Fair
MARSHFIELD, WI | AUGUST 31 - SEPTEMBER 3, 2012

International Draft Horse, Mule & Pleasure Driving Show
POMONA, CA | SEPTEMBER 26 & 30, 2012

High Horse Design Solutions

\$\$ 2012 National Show Travel Funds \$\$

A member has contributed \$500 to help defray travel expenses for exhibitors traveling 500 miles or more to the National and is offering to match other contributions up to another \$500. If you would like to help support exhibitors going to this show, please consider contributing to this fund. Your contributions will be matched up to \$500. More details will be in the Summer Members' Bulletin.

If you would like to contribute, call the office to make a contribution by credit card, or send a check payable to ASHA with '2012 National Show travel fund' noted in the memo section.

Office phone: 888-302-6643, Address: ASHA, P.O. Box 408, Lake Delton, WI 53940

Our sincere appreciation to Janet Long for making this generous contribution and matching offer.

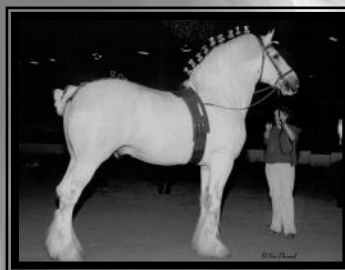
Thank You!!

The Show Committee



Ox Kill Farm Shires

Proudly Presents

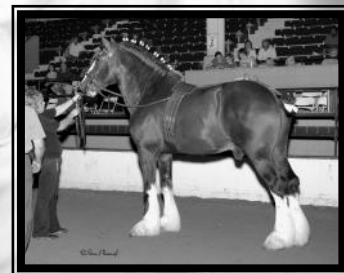


Metheringham Upton Isaac

~ Substance ~ Style ~ Size ~
~ Soundness ~ Sense ~
~ Multiple Champion ~
He stands 19.1 Hands
Produces Black, Grey & Bay

Leapley Deighton Cardinal

Winner of the coveted
King George Cup at the
Peterborough show in
England.



If you have any questions about Ox Kill Farm, our horses, or Shire horses in general please contact us...

Gene & Vicky McCaffrey

267 Sholtes Road * Schoharie, NY 12157
(518) 872-1295 * oxkill@capital.net * www.shirehorse.net

Quarterly Registrations: Dec. 31, 2011 to April 1, 2012

Remember to check your documents for errors upon receipt from the Secretary.

The information here is from the database at the office..

"BIG SKY TUFF'S APRIL FOOL - 24655-M"

"Mare; Bay. Wide blaze with hook over left eye, black spot on muzzle. White on lower lip and chin groove. Left and right forelegs white stockings to above knees. Left and right hind legs white stockings below hocks in hind to gaskins in front. Roan patch over withers. Roan hairs in flank, heart girth, and over body. Roan hairs in tail. Foaled April 1, 2012; Bred and owned by BRETT and LEANNE HOAGLAND, Glendive, MT; Sire ILLUSION FARMS TUFF HEDEMAN 23091-S; Dam LOVES BIG SKY HARMONY 23980-M."

"COPPER LEAF STARGAZER LILY - 24640-M"

"Mare; Black. Very small white swirl on forehead between eyes, small white spot on right upper lip, white on chin; Left foreleg white to above ankle, right foreleg white to above ankle, left hind leg white to above ankle, right hind leg white to above ankle. Foaled June 3, 2004; Bred and owned by VICTORIA and STEVEN MARSH, Ann Arbor, MI; Sire FORGE RUN'S CILANTRO 22588-S; Dam FERRY GOLDEN SUNSET 23155-M."

"COPPER LEAF STELLA D'ORA - 24641-M"

"Mare; Black. Blaze from star to snip, narrows at right eye, white lower lip with black dot on left side; Left foreleg white to above knee, right foreleg white to above knee outside to top of leg on inside. Left hind leg white to hock on back extending slightly higher in front. Right hind leg white to hock with white extending midway to stifle in thin white line; Thin white ragged line on lower barrel. Foaled May 27, 2006; Bred and owned by VICTORIA and STEVEN MARSH, Ann Arbor, MI; Sire FORGE RUN'S CILANTRO 22588-S; Dam STAR-KNIGHT PRISCILLA (146111) 23804-M."

"JENSON DEFENDER JACKIE - 24653-M"

"Mare; Black. Wide round star narrows to stripe which stops in a point above nostrils. Left and right forelegs white stockings to knees. Left hind leg white stocking below hock in back to a point above hock in front. Right hind leg white stocking below hock in back to a point above hock in front, shorter than left hind. Foaled June 16, 2011; Bred and owned by JENSON SHIRES LLC, Blair, NE; Sire BLACK PARK DEFENDER 23230-S; Dam JENSON'S DIPLOMAT JOY 23963-M."

"JENSON DIPLOMAT EMMA - 24645-M"

"Mare; Black. Blaze from top of forehead through muzzle, narrower snip; Left foreleg white stocking to knee; Right foreleg white stocking to knee; Left hind leg white stocking below hock in the back to a point in the front of the hock; Right hind leg white stocking below hock in the back to a point in the front of the hock. Foaled June 15, 2011; Bred and owned by JENSON SHIRES LLC, Blair, NE; Sire DEIGHTON ROYAL DIPLOMAT (46942) 22831-S; Dam JENSON'S MAGNUM EMILY 24518-M."

"JENSON DIPLOMAT SUGAR - 24652-M"

"Mare; Black. Irregular blaze starting with round star on right side of forehead, narrowing to stripe at and below eyes, widening mid face, continuing to white snip between nostrils. Left and right forelegs white stockings to below knees. Left hind leg white stocking below hock in back to a point in front. Right hind leg shorter white stocking to below hock. White marking on left lower mid-barrel continuing into gaskin. Foaled August 6, 2011; Bred and owned by JENSON SHIRES LLC, Blair, NE; Sire DEIGHTON ROYAL DIPLOMAT (46942) 22831-S; Dam FOX VALLEY SWEET SUE (144964)."

"MADISON ARTEMIS - 24650-M"

"Mare; Black. Wide star tapering to off-center left side narrow stripe. Diamond shaped snip right side between nostrils on muzzle and upper lip. Left foreleg white sock higher in back. Right foreleg white sock higher in back. Left hind leg white stocking to hock. Right hind leg white stocking to hock. Foaled May 11, 2011; Bred and owned by RICHARD HUNT BOBO, Okolona, MS; Sire MADISON THOR 23076-S; Dam FOX VALLEY LITTLE MISS (147373) 24424-M."

"MADISON LUNA - 24649-M"

"Mare; Bay. Wide blaze with notch near left eye. White between nostrils over upper lip. Right eye blue. Left foreleg white irregular stocking, over knee in hind to mid-knee in front, down to point on the inside and higher white on outside. Right foreleg white irregular jagged stocking to mid-knee in front and hind. Left hind leg white stocking white to top of hock in hind and lower hock in front. Right hind leg white stocking to top of hock in hind and above hock in front. White marking point of buttock and below. White marking left side rear abdomen. Foaled April 17, 2011; Bred and owned by RICHARD HUNT BOBO, Okolona, MS; Sire HAWKS' PRAIRIE PENNY'S GARRICK 22619-S; Dam FOX VALLEY INDIAN MAID (147371) 24425-M."

"MILES' SWEET DAISY - 24654-M"

"Mare; Bay. Wide blaze touching right nostril, covering left nostril, and continuing to upper lip and chin. Left foreleg short white sock. Right foreleg white stocking from just above hoof in back to up to knee in front. Left and right hind leg white stockings mid cannons in back to hock joints in front. Foaled June 6, 2006; Bred and owned by HEIDI LANNERS, Shevlin, MN; Sire LAUREL'S POWERFUL PAUL 22626-S; Dam FOX VALLEY ICED COFFEE (146668)."

"NONSUCH SARAH'S LIZZIE - 24648-M"

"Mare; Black. Star off center to the right side, stripe narrows to center of face on right side, snip to both nostrils. Left foreleg white stocking to knee with dip on the outside. Right foreleg white stocking to a point at the knee on the outside and coronet on the inside. Left hind leg white stocking under hock in hind to over hock in front. Right hind leg white stocking under hock in hind to over hock in front. Foaled May 10, 2010; Bred and owned by SANDY LERNER, Upperville, VA; Sire PASSAGE CREEK CHOPIN'S HEART 23176-S; Dam NONSUCH SARAH 23958-M-ET."

"RIC SHAR'S PRINCESS ASHLEY SOPHIA - 24651-M"

"Mare; Black. Wide blaze with pointed star, widens between eyes, narrows to over muzzle and upper lip. Lower lip white spot. Left foreleg white stocking to knee. Right foreleg black with narrow white stripe from hoof to knee in front on inside and outside. Left hind leg white sock with point on inside. Right hind leg white higher front of hock with gradual flaring to hoof. Foaled May 7, 2011; Bred and owned by J. RICHARD HURT, West Jefferson, OH; Sire JENSON'S MAGNUS MASTERMIND 22881-S; Dam SHIRE HALL'S LILY BELLE 24201-M."

"ROCKY HOLLOW MISTY'S MASTERMIND - 24642-M"

"Mare; Black. Irregular blaze widens near left eye and slightly on the left center of the blaze. White over center of muzzle, left nostril, and lower lip; Left foreleg white coronet coming to a point at ankle in front. Right foreleg white sock to ankle in front and bottom of knee in back; Left and right hind legs white to hocks in front and just below hocks in back. Foaled May 26, 2009; Bred and owned by JAMES and ANGELA STEWART, Richmond, MO; Sire JENSON'S MAGNUS MASTERMIND 22881-S; Dam DFF THUNDERHOOF MISTY 24079-M."

"TETON-VIEW JUNE - 24644-M"

"Mare; Black. Irregular round star, higher on right with cut-out on right. Point near right eye. Irregular stripe over left side of face in center, and centered over the muzzle. Snip on lower lip; Left and right forelegs white socks; Left and right hind legs white stockings higher in front. Foaled May 25, 2011; Bred and owned by KARI MOULTON, Tetonia, ID; Sire HILLMOOR DOUBLE DIAMOND (C.420) 22801-S; Dam MOULTON LADYBUG 24076-M."

"TETON-VIEW ROSE - 24643-M"

"Mare; Black. Smaller diamond-like star starting above eyes to below eyes. Snip on upper and lower lips; Left and right forelegs white socks; Left and right hind legs white angled stockings. Foaled August 4, 2006; Bred by BOYD MOULTON, Victor, ID Owned by KARI MOULTON, Tetonia, ID; Sire HILLMOOR DOUBLE DIAMOND (C.420) 22801-S; Dam MOULTON LADYBUG 24076-M."

"TRIPLE 'H' EVE'S ROSE BUD - 24646-M"

"Mare; Black. White diamond starting at the top of forehead, out to right eye, down with scoop to muzzle. Left side toward left eye, around, and down to muzzle including nostrils. Black on end of muzzle; Left foreleg black; Right foreleg white stocking to knee; Left hind leg white stocking below hock in back to a point above hock in front; Right hind leg white stocking below hock in back to a point above hock in front. Foaled April 22, 2011; Bred and owned by EVONNA HAMMON, Blackfoot, ID; Sire HILLMOOR DOUBLE DIAMOND (C.420) 22801-S; Dam EASTERLEY BLOSSOM (146317) 23927-M."

"TRIPLE 'H' LADY'S HIGH WATER LILY - 24647-M"

"Mare; Black. Irregular curved blaze near right eye and over left nostril; Left foreleg white to shoulder and elbow continuing across barrel with point on forearm; Right foreleg white to shoulder and elbow, continuing across barrel; Left hind leg white to above gaskin; Right hind leg white stocking below hock in front and back with narrow point on outside gaskin. Foaled May 26, 2011; Bred and owned by EVONNA HAMMON, Blackfoot, ID; Sire HOWELL BROTHERS JAG 23256-S; Dam HATHAM GREEN MIDNIGHT LADY (146468) 23926-M."

"BLACK FOREST IDEAL MOONSHADOW (47113) - 23384-S"

"Stallion; Black. White blaze extending to muzzle; Left foreleg white stocking to just above knee, black spot on medial side; Right foreleg white stocking to knee; Left hind leg white stocking to hock in rear, halfway up gaskin in front; Right hind leg white stocking to hock in rear, halfway up gaskin in front; Body white spot on right side extending under belly to left side. Foaled August 4, 2001; Bred by JEFF and CHRISTINE BARTKO, Platteville, CO Registered by ARDEN A. and PATRICIA FERRELL, Ocala, FL; Sire EARNSHAW IDEAL (46635) 22723-S; Dam FOX VALLEY GABRIELLE (144419) 23768-M."

"JENSON DIPLOMAT IMPRESSIVE - 23387-S"

"Stallion; Black. Blaze with points over both eyes to over nose and includes both nostrils. Left and right forelegs white stockings to below knees. Left hind leg white stocking from below hock in back to above hock in front. Right hind leg white stocking shorter than left hind, below hock in back to above hock in front. Foaled January 5, 2012; Bred and owned by JENSON SHIRES LLC, Blair, NE; Sire DEIGHTON ROYAL DIPLOMAT (46942) 22831-S; Dam JENSON'S RHYD-Y-GROES LOLA 23148-M."

"KOHLER'S MOONLIGHT ARGO - 23389-S"

"Stallion; Black. Narrow blaze starts with a point at the forehead and continues to just below chin. Left and right forelegs white stockings below knees in front, lower in back. Left and right hind legs white stockings below hocks in back to above hocks in front. Foaled March 28, 2012; Bred and owned by STEVEN and DAYLA KOHLER, Walnut Cove, NC; Sire MOONLIGHT SOLSTICE 23059-S; Dam BIREN'S MAGNUM ANNE 24183-M."

"KOHLER'S MOONLIGHT KOHL - 23388-S"

"Stallion; Black. Wide blaze narrows above the eyes, widens at eyes, narrows above nostrils, widens at nostrils, narrows below nostrils under chin. White chin. Left foreleg white stocking below knee in front to above knee in back. Right foreleg white stocking starting with fetlock in hind up to knee in front with a point on the outside. Left and right hind legs white stockings below the hocks in back to above the hocks in front. Foaled March 18, 2011; Bred and owned by DENAE ANN KOHLER, Walnut Cove, NC; Sire MOONLIGHT SOLSTICE 23059-S; Dam SUDDEN CREEK QUINCY 23724-M."

"NORTHEAST INTREPID - 23385-S"

"Stallion; Black. Wide blaze between the eyes, notch over right eye. Lower lip white; Left foreleg white stocking to just above knee; Right foreleg white stocking to just below knee; Left hind leg white stocking above hock in front and point of hock in back; Right hind leg white stocking to mid-gaskin in front and point of hock in back; Small white spot on right flank, small white spot on left side behind elbow. Foaled April 4, 2012; Bred and owned by JANET L. LONG, Epsom, NH; Sire HICKORY HILL NITRO OF THE NORTHEAST 23253-S; Dam SASSY SUPREME DAISEY MARIE 24278-M."

"SHERWOOD'S BRAVEHEART SAMSON - 23386-S"

"Stallion; Black. Wide round star, narrows to stripe below eyes, snip widens over nostrils to upper and lower lips. Left foreleg white stocking below knee in front and higher in back to joint bend. Right foreleg jagged white sock halfway up cannon. Left and right hind leg white stockings below hocks in back to above hocks in front. Foaled March 26, 2011; Bred and owned by BERNARD H. and SHARON L. SZEWS, Ozark, MO; Sire FATHER HILL CAPTAIN MIDNIGHT 22533-S; Dam STERLINGSHIRE BARNETTE 24239-M."

"HONEY'S NECTAR - 224"

"Gelding; Chestnut. Medium blaze extending to nostrils, over muzzle and upper lip with notch near left eye. Black spot on right side of muzzle. Left and right hind legs socks to mid cannons. No other markings. Foaled June 4, 2007; Bred by KATHLEEN HATHAWAY, Fryeburg, ME Owned by JO ANNE GAYLER, Freedom, NH; Sire COWERSLANE CONCORDE 22508-S; Dam HONEYS SLIPPIN 3,761,638 AQHA."

"JENSON DIPLOMAT MAVERICK - 20261-G"

"Gelding; Bay. Irregular blaze starting with star higher on left side of forehead, narrows above eyes and widens below eyes, touches both nostrils and continues over muzzle and upper lip. Left and right forelegs white stockings at knees. Left hind leg white stocking below the hock in back to a point in front of hock. Right hind leg white stocking from below hock in back to a point above hock in front. Foaled June 16, 2011; Bred and owned by JENSON SHIRES LLC, Blair, NE; Sire DEIGHTON ROYAL DIPLOMAT (46942) 22831-S; Dam STEEGE'S ATHENA (7/8-SHIRE) B-23780-M."

WELCOME NEW MEMBERS

Thank You for Supporting the Shire Horse!

We welcome all our new members to our Shire Family! Thank you! Please feel free to participate in our "Meet the Members" or "Member's News"

"MacKenzie Harrold"

"2 Kimberly Dr., Mogadore, OH 44260
(330) 628-3433"

"Christie Kraabel"

"3206 Keewaydin Place, Minneapolis,
MN 55417"

"Diane Charette"

"Charette Farms, 135 South Perley Brook
Rd., Fort Kent, ME 04743
(207) 834-5349"

"Terri Kipp"

"Kipp Farms Belgians-Shires-Shropshires,
W4005 State Highway 98, Loyal, WI
54446
(715) 255-8300"

"Philip Cromwell"

"9114 Edmonston Court #103, Greenbelt,
MD 20770
(805) 305-1904"

"Melissa Sharkey"

"8945 Gohr Rd., Krakow, WI
(920) 899-2250"

"Shaq Murchison"

"0185 CR 225, Rifle, CO 81650"

"Kate Foster"

"P.O. Box 1119, Basalt, CO 81621"

"David Humperts"

"215 Oak Barrel Ln., Zillah, WA 98953
(509) 833-1800"

NEW FALL DRAFT HORSE SALE

The Clydesdale Breeders of the U.S.A. will be hosting the 1st Annual Draft Horse Classic Sale at the Michiana Event Complex in Howe, IN on October 26 - 27, 2012.

This sale is open to all draft breeds and the breeds will be mixed throughout the sale order(not one breed after another). More details to follow via email and website.

This is another opportunity to consign Shires to a large public sale.



Ayrshire Farm is Proud to announce the release of **Achenbach** Hitching And Driving

A video Companion .

This instructional DVD delves into the highlights and key parts to the Achenbach driving methods and is an accompaniment to the book also available from Ayrshire farm.

Please visit our website
www.achenbachdriving.com
for more information and how to order

Do You have Address – Email changes?

*To make sure your service is uninterrupted,
Please be sure to inform the ASHA office
Of any changes in postal address, email address
Or phone number*

Office hours:
9am to 3pm CDT Tuesday, Wednesday, & Thursdays.

Myrna Rhinehart Secretary
American Shire Horse Association
P.O. Box 408 ~ Lake Delton, WI 53940
Phone: 888-302-6643
email: secretary@shirehorse.org
www.shirehorse.org

What is a Shire: Color~ By Arlin Wareing

Editors Note: The comments and opinions reflected in the discussion below are not necessarily those of the ASHA, the Board of Directors or the Editor. They are the opinion and points of the author. The hope of this column is to generate conversation and a place to discuss points of view in the Shire industry. We encourage responses to print in the next Bulletin.

As stated in the beginning we were going to outline each section of the Breed Standards. First on the list is color, which I question as to why, as it really means nothing, it is there however so we must deal with it. It would seem to be there for information only. Having said it doesn't mean anything it very likely could be the issue that can destroy the breed, and I don't say that lightly, it is a serious issue.

The ASHA Standards reads Color; Black, brown, bay, grey, chestnut/sorrel (rare) are the preferred colors. Excessive white markings and roaning are undesirable. These standards were adopted in 1977. I don't believe the word (rare) was included, it should be removed. There is no difference for mares and geldings.

The SHS Standards for stallions reads Colour; Black, brown, bay, or grey. No good stallion should be splashed with large white patches over the body. He must not be roan or chestnut. For mares and geldings it simply states black, brown, bay, grey, roan.

Just to provide a little background info, which is far from being 100% accurate, I found the following.

2003 ASHA registry; black 84%, brown 0%, bay 8%, grey 6%, chestnut 0%, roan 2%.

1911/14 ASHA registry; black 14%, brown 12%, bay 54%, grey 6%, chestnut 10%, roan 4%.

2003 SHS registry; black 34% brown 17%, bay 36%, grey 11%, chestnut 0%, roan 2%.

(There is a very fine line between brown and dark bay in England)

1913 SHS registry; black 8% brown 27%, bay 60%, grey 1%, chestnut 3%, roan 1%.

I don't know the year or the reason why the SHS took the stand against chestnut, roan, and extra white, because to their credit, otherwise they are very very much color blind in their breeding programs. Color is far down there list of priorities, as it should be. I think they pushed the extra white issue over the top. The ASHA approach has worked well by allowing breeders to determine for themselves where to draw the line. England on the other hand uses there stallion approval program with a line drawn in the sand which actually disqualifies stallion having too much white on their bodies. The problem being, the determination by the inspectors as how much is too much. One group of inspector on a given year may turn down horses that another group in a different year may accept. At some point it is very subjective for those making the decision. Even if we can all agree that a stallion has too much white, it is not always the case he will transmit that to his offspring. Thus some very good stallions are kept out of the stud book that otherwise could have improved the breed. This is surely an issue for debate. A year ago a stallion approval plan was proposed by the ASHA BoD, which used the SHS breed stand on color. I have not seen where that requirement has been removed. If let stand it would violate our standard.

I have heard it said many times by various people, when looking at a shire with a white spot or two on the body, that it is a sign of the Clyde blood in the pedigree. I can tell you as a fact that is not necessarily the case. I think it is pretty well accepted by the experts, that white on the body and legs tend to increase from generation to generation. This may be the reason England tried to curb it years ago and the Clydes didn't. Some big and prominent shire breeders from years back bred for more white as did the Clyde breeders, which has been past on.

There is no mention of white markings on the legs in either the ASHA or SHS Standards. This is the area, in my opinion, that has become the problem which could destroy the breed. We have breeders who lead their advertizing with the fact the horse in question has four white legs, and to make matters worse they are priced higher, all of which leads the public to think it is a top requirement to have white legs. Surely we can't tell would be buyers what color and markings to buy, however we can point out the many good qualities in our breed without making four white legs the main thrust of our promotion. There is an old saying that goes something like this, "no good horse has a bad color". I have never seen a judge put down a horse in a class because it didn't have four white stockings. Some team and hitch classes give credit to match, which could include color. I can't imagine that being used when it comes to markings, but even if it did, horses with three white legs would be as matched as if they had four.

As we go over the Standards in the upcoming bulletins I hope we can understand why it is more important to breed for performance, and ability to stay sound than for white markings.

2011 All-North American Contest Update

This Spring, the qualifying shows were reviewed by the All-North American Committee and the Nomination Form updated accordingly. The Nomination Form has been posted both on the Draft Horse Journal's website and ASHA's website.

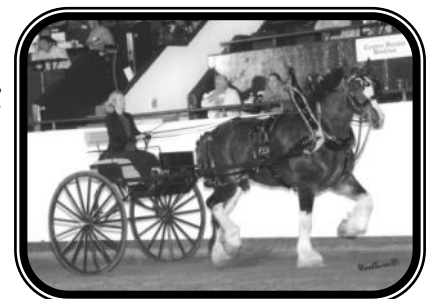
Thank you to those who have offered input into new shows for this year's consideration. Suggestions are continuously taken and will be considered for next year's Contest.

Best of luck to those exhibiting your beautiful Shires this show season!

Submitted by,

Danelle Kinney

All-North American Committee chair



Quarterly Transfers:

September 30th to December 31, 2011

Remember to check your documents for errors upon receipt from the Secretary. Contact us if you find any problems.

"171 - The Mare, VALENTINO'S GRAYINGHAM ADORA"
" from LAURIE A. RYDELL, Grants Pass, OR transferred to MARGO BARTOW, Merlin, OR 11/18/2011"

"172 - The Mare, VALENTINO'S GRAYINGHAM BREEZE"
" from LAURIE A. RYDELL, Grants Pass, OR transferred to MARGO BARTOW, Merlin, OR 11/1/2009"

"216 - The Mare, SUMMER RAIN'S PRINCESS LUNA"
"from MICHELLE SIMONO, Silt, CO transferred to COURTNEY BRIDGEMAN, Floresville, TX 9/19/2010"

"20233-G - The Gelding, PERIDOT'S SIMON"
from LINDA J. BRODZIK, New Hope, MN transferred to RUSSELL and CURTIS BRAND, Zimmerman, MN 1/31/2012"

"20259-G - The Gelding, STORYBOOK'S SIMON"
" from SARAH A. WILLIAMS, Boonville, MO transferred to AARON PAUL NORRIS, Boone, NC 2/13/2012"

"20261-G - The Gelding, JENSON DIPLOMAT MAVERICK"
"from JENSON SHIRES LLC, Blair, NE transferred to STEVEN and DAYLA KOHLER, Walnut Cove, NC 3/15/2012"

"22801-S - The Stallion, HILLMOOR DOUBLE DIAMOND (C.420)"
from TODD WAREING, Gig Harbor, WA transferred to ARLIN WAREING, Blackfoot, ID 1/1/2012"

"22866-S - The Gelding, HUSKA MILLENNIUM SHIRES BRAVEHEART"
from JUDITH A. HASTINGS, Paso Robles, CA transferred to PHILIP L. CROMWELL & JUDITH A. HASTINGS, Greenbelt, MD 5/16/2012"

"22908-S - The Stallion, MADISON MISTY'S COLE"
" from RICHARD HUNT BOBO, Okolona, MS transferred to BILL and BRANDIE WILCOX, Pearl River, LA 11/16/2011"

"23059-S - The Stallion, MOONLIGHT SOLSTICE"
" from DENAE ANN KOHLER, Walnut Cove, NC transferred to STEVEN and DAYLA KOHLER, Walnut Cove, NC 4/25/2012"

"23177-S - The Stallion, STORYBOOK'S SPARTACUS"
from KIMBERLY GRIGGS, Linn Creek, MO transferred to ANNETTE FIELDING, Hooper, UT 12/31/2011"

"23203-S - The Stallion, JENSON'S DIPLOMAT SERGEANT"
"from JENSON SHIRES LLC, Blair, NE transferred to ERICH McHONE, Waterloo, IA 9/1/2010"

"23254-S - The Stallion, HICKORY HILL DALTON"
" from ROBERT TAYLOR II, Owego, NY transferred to W. MICHAEL WIERE, Langton, ON CAN 4/28/2012"

"23285-S - The Stallion, JENSON'S MONTE LEGEND"
" from JENSON SHIRES LLC, Blair, NE transferred to WANDA F. JOHNSTON, Dayton, WY 3/11/2012"

"23319-S - The Stallion, ECHO VALLEY LOMAXX"
" from NANCY P. and BRADLEY N. FRY, Steamboat Springs, CO transferred to JULIA TILLER, Macon, GA 3/27/2012"

"23321-S - The Stallion, HICKORY HILL DIE HARD OF THE NORTH-EAST"
"from ROBERT TAYLOR II, Owego, NY transferred to STEPHEN LEWIS, Cannington, ON CAN 4/28/2012"

"23344-S - The Stallion, JENSON'S DIPLOMAT GARRET"
" from JENSON SHIRES LLC, Blair, NE transferred to VERN E. STEEGE, Fredericksburg, IA 3/30/2012"

"23347-S - The Stallion, NORTHEAST HOTSHOT"
" from JANET L. LONG, Epsom, NH transferred to DAVID AND SUSAN KARGES, Edinboro, PA 4/28/2012"

"23350-S - The Stallion, JENSON'S MONTE RICK"
" from JENSON SHIRES LLC, Blair, NE transferred to WARREN AND LISBETH GRABER, Sioux Falls, SD 5/11/2012"

"23351-S - The Stallion, JENSON'S DIPLOMAT DOC"
" from JENSON SHIRES LLC, Blair, NE transferred to JAMES P. EDMISTON, Edgewood, NM 3/1/2012"

"23354-S - The Stallion, JENSON'S DIPLOMAT SIMON"
" from JENSON SHIRES LLC, Blair, NE transferred to JAMES P. EDMISTON, Edgewood, NM 3/4/2012"

"23366-S - The Stallion, TALLY HO BK'S DALIN"
" from KIMBERLY N. PARRINGTON-MURCHISON, Rifle, CO transferred to JUDITH A. HASTINGS, Paso Robles, CA 5/8/2012"

"23388-S - The Stallion, KOHLER'S MOONLIGHT KOHL"
" from DENAE ANN KOHLER, Walnut Cove, NC transferred to STEVEN and DAYLA KOHLER, Walnut Cove, NC 3/18/2011"

"23705-M - The Mare, STERLINGSHIRE MISTY MAGNOLIA"
" from ERIC and TRACY BATSTONE, Ocala, FL transferred to TRACY FERRELL, Ocala, FL 10/19/2011"

"23720-M - The Mare, JENSON MURPHY RUBY"
" from JERRID GEVING, Baker, MT transferred to JEROLD SANDERS, Fairwater, WI 12/30/2011"

"23724-M - The Mare, SUDDEN CREEK QUINCY"
" from DENAE ANN KOHLER, Walnut Cove, NC transferred to STEVEN and DAYLA KOHLER, Walnut Cove, NC 4/25/2012"

"B-23780-M - The Mare, STEEGE'S ATHENA (7/8-SHIRE)"
" from JENSON SHIRES LLC, Blair, NE transferred to CHRIS HOFPAR, Dwight, NE 4/1/2012"

"B-23871-M - The Mare, CORNERSTONE'S AMAZIN GRACE (7/8 SHIRE)"
" from VICKI SCHMIDT, Hebron, ME transferred to DIANE M. CHARETTE, Fort Kent, ME 4/11/2012"

"23898-M - The Mare, DAYSRING MISS GEORGIA"
" from JENSON SHIRES LLC, Blair, NE transferred to WARREN AND LISBETH GRABER, Sioux Falls, SD 5/11/2012"

"23926-M - The Mare, HATHAM GREEN MIDNIGHT LADY (146468)"
" from EVONNA HAMMON, Blackfoot, ID transferred to ARLIN and WAYNE WAREING, Blackfoot, ID 4/1/2012"

"23927-M - The Mare, EASTERLEY BLOSSOM (146317)" from EVONNA HAMMON, Blackfoot, ID transferred to ARLIN and WAYNE WAREING, Blackfoot, ID 4/1/2012"

"23952-M - The Mare, SUMMER RAIN & BK'S LIL CHARMER"

" from MICHELLE SIMONO, Silt, CO transferred to JEFF BARTKO, Colorado Springs, CO 10/27/2010"

"23968-M - The Mare, RIVER FORKS LUCINDA [1882-M]"

" from LAUREL EATON, Austin, TX transferred to JAE BRIMHALL, Belleview, FL 12/8/2010"

" transferred to TRACY FERRELL, Ocala, FL 3/9/2012"

"23984-M - The Mare, GLENMARY RAVEN"

" from ROBERT TAYLOR II, Owego, NY transferred to MACKENZIE SHIRES, LLC, Longmont, CO 4/28/2012"

"23995-M - The Mare, SWEETWATER'S REIGN"

" from CHRISTINA WHELAN, San Jose, CA transferred to GABRIELE FALDER, Box Elder, SD 4/1/2012"

"24071-M - The Mare, JENSON'S IRIS"

" from NATHAN and GRETCHEN MILLWOOD, Conway, SC transferred to STEVEN and DAYLA KOHLER, Walnut Cove, NC 9/30/2011"

"24075-M - The Mare, STERLINGSHIRE LADY ALISON"

" from ERIC and TRACY BATSTONE, Ocala, FL transferred to ARDEN A. and PATRICIA FERRELL, Ocala, FL 10/19/2011"

"24076-M - The Mare, MOULTON LADYBUG"

" from BOYD MOULTON, Victor, ID transferred to KARI MOULTON, Tetonia, ID 7/15/2006"

"24112-M - The Mare, FOGGY MEADOWS ABIGAIL"

" from CHRISTY SURPRENANT-RILEY, Brewster, MN transferred to CHRISTIE KRAABEL, Minneapolis, MN 1/30/2012"

"24376-M - The Mare, TAYLORS AMELIA"

" from ROBERT TAYLOR II, Owego, NY transferred to JANET L. LONG, Epsom, NH 4/28/2012"

"24380-M - The Mare, STORYBOOK'S CHELSEA"

" from KIMBERLY GRIGGS, Linn Creek, MO transferred to ANNETTE FIELDING, Hooper, UT 12/30/2011"

"24407-M - The Mare, JENSON'S DIPLOMAT ELLIE"

" from JENSON SHIRES LLC, Blair, NE transferred to KEN and MARLYS KNUTH, Slayton, MN 8/15/2011"

"24416-M - The Mare, HICKORY HILL REVA"

" from ROBERT TAYLOR II, Owego, NY transferred to JANET L. LONG, Epsom, NH 4/28/2012"

"24428-M - The Mare, HICKORY HILL JAMIE"

" from ROBERT TAYLOR II, Owego, NY transferred to SHANNON COBBS, Huntington, IN 4/28/2012"

"24429-M - The Mare, HICKORY HILL LEAH"

" from ROBERT TAYLOR II, Owego, NY transferred to JEANETTE ROCHLITZ, Kiowa, CO 4/28/2012"

"24439-M - The Mare, LADY SARA'S DOTTIE"

" from CARL L. and CHERYL HEITKAMP, Adrian, MN transferred to WENDY RAGER, Beaver Springs, PA 1/20/2012"

"24472-M - The Mare, AXEHOLME REMINISCE"

" from NANETTE OSTERHOUDT, Colfax, WI transferred to MELISSA SHARKEY, Krakow, WI 10/9/2011"

"24484-M - The Mare, JENSON'S MONTE BREE"

" from JENSON SHIRES LLC, Blair, NE transferred to ANN R. WHEELAND, Elkhorn, NE 4/17/2012"

"24515-M - The Mare, SUMMER RAIN'S EASTER LILY" from MICHELLE SIMONO, Silt, CO transferred to MACKENZIE SHIRES, LLC, Longmont, CO 4/7/2012"

"24554-M - The Mare, SUDDEN CREEK JENNY"

" from KEN KNUTH, Slayton, MN transferred to JENSON SHIRES LLC, Blair, NE 4/1/2012"

"24558-M - The Mare, JENSON'S DIPLOMAT POLLY"

" from JENSON SHIRES LLC, Blair, NE transferred to WARREN AND LISBETH GRABER, Sioux Falls, SD 5/11/2012"

"24598-M - The Mare, STORYBOOK'S CRICKET"

" from SARAH A. WILLIAMS, Boonville, MO transferred to AARON PAUL NORRIS, Boone, NC 2/13/2012"

"24636-M - The Mare, BK'S AMAZING GRACE OF SHADY GROVE"

" from CYNTHIA L. TEMAAT, Spearville, KS transferred to BRIAN MC INTOSH, Inkerman, ON CAN 4/28/2012"

"24645-M - The Mare, JENSON DIPLOMAT EMMA"

" from JENSON SHIRES LLC, Blair, NE transferred to SHARON and GLENN GARREN, Molalla, OR 4/1/2012"

"24646-M - The Mare, TRIPLE 'H' EVE'S ROSE BUD"

" from EVONNA HAMMON, Blackfoot, ID transferred to ARLIN and WAYNE WAREING, Blackfoot, ID 4/1/2012"

"24647-M - The Mare, TRIPLE 'H' LADY'S HIGH WATER LILY"

" from EVONNA HAMMON, Blackfoot, ID transferred to ARLIN and WAYNE WAREING, Blackfoot, ID 4/1/2012"

"24654-M - The Mare, MILES' SWEET DAISY"

" from HEIDI LANNERS, Shevlin, MN transferred to NATALIE STEVENSON-MILES, Watsonville, CA 10/30/2011"

Missing the Meeting Minutes

www.shirehorse.org

In the 'Members Only' section choose
'Meeting Minutes'

Select the minutes you are interested in
from the menu

As I See It:

Have a concern or problem and would like to share it with the membership? Here is the column for you. The following criteria, adopted at the 2005 Annual ASHA Meeting, must be followed.

- 1) All copy must be camera ready.
- 2) No profanity.
- 3) All copy must be 1/2 page or less inclusive of signature. 1/2 page is defined as 5" X 6".
- 4) Original Signature from the person submitting it must be included.
- 5) If anyone person or position is mentioned— written permission from that person must accompany the submission.
- 6) A member may submit one article per newsletter. This includes articles signed by multiple members.
- 7) The editor may decide not to print a submission.

TROYER CARRIAGE COMPANY



~Parts~
~Accessories~
~Craftsmanship~

*Proud Sponsor of
ASHA Cart Raffle*

Handcrafted in the USA

www.troyercarriage.com



TROYER CARRIAGE COMPANY, INC.

280-A North Village Dr., Shipshewana, In 46565

(260) 768-7135 Fax: (260)768-7137

The American Shire Horse Association est. 1955



Myrna Rhinehart Secretary

P.O. Box 408 ~ Lake Delton, WI 53940

Phone: 888-302-6643

email: secretary@shirehorse.org

www.shirehorse.org