

The American Shire Horse Association

est. 1885



SPRING 2012 BULLETIN

A Message From Your President:

Greetings to all,

As the seasons change so have a few things at ASHA. The biggest change for me has been stepping into the President's position of ASHA's Board of Directors. A new role for me to serve this great breed.

Here in Ohio, spring is early and horses are shedding nice. Foaling season is upon us. Fields are being plowed by local teams, maple syrup is boiling down and a few daffodils are blooming. Reports from draft horse sales are strong. It sounds like a good year lying ahead.

Don't miss ASHA and local events. Please support and be part of the opportunities you can with your Shires. It is great to meet new friends and catch up with the old at expo's, sales, shows, field events and the many other activities you may be involved in.

A special thank you to Dan Hubbell for his time as President. As Dan has stayed on the Board of Directors to finish his term, his insight will be appreciated as we grow this organization.

The Education Day and the Annual Meeting were amazing. For the efforts of those that worked so hard to pull this together, wow! Fellowship, food and opportunities to expand our knowledge in the equine world. A special 'Thank You' to Nanette Osterhoudt for being lead in this great event.

Election year is here, for ASHA too! If you want to be part of the Board of Director's, here is your chance. Information in this bulletin will give contacts to start the process to be on ASHA's ballot this fall. Don't delay and miss your opportunity to make a difference. See Page 40 for details.

The best way for ASHA to grow is for the Board of Directors to know what is happening with the membership. Your concerns and joys are important to us, so let us know. We will only improve knowing where members and friends struggle and triumph.

To an exciting future ahead for the Shire!

Todd Riedel

President, American Shire Horse Association
traillightfarms@aol.com

Board of Directors

Todd Riedel ~ President

6168 Greenwich Rd., Seville, OH 44273
(330) 419-0346 traillightfarms@aol.com

Karla Stoner ~ Vice President

8401 Peters Rd., Frederick, MD 21704
(301) 874-3250 bloomforge@peoplepc.com

Kim Parrington- Murchison ~ Treasurer

0185 CR 225, Rifle, CO 81650
(970) 625-1142 thshire@sopris.net

Leanne Hoagland ~ Editor

PO Box 95, Glendive, MT 59330
(406) 687-3004 bsshires@midrivers.com

Dan Hubbell

400 8th St., Traverse City, MI 49686
(231) 947-5600 dan@hubbelllawoffice.com

Danelle Kinney

21847 310th St., Red Wing, MN 55066
(651) 380-9600 haugenhill@hotmail.com

Janet Long

34 Howards Lane, Epsom, NH 03234
(603) 930-6975 janet@northeastshires.com

Gene McCaffrey

267 Sholtes Rd., Schoharie, NY 12157
(518) 872-1295 oxkill@capital.net

Paul Tyrell

PO Box 320, Upperville, VA 20185
fourinhand@gmail.com

Secretary

Myrna Rhinehart ~ Secretary

P.O. Box 408 ~ Lake Delton, WI 53940
Phone: 888-302-6643
email: secretary@shirehorse.org

The Editor's Note:

Hello Members:

I want to start by apologizing for the delay in this edition. The computer had a hex on me this month as I lost a thumb drive and also a couple of final exams that were written and ready for my students.

What a spring it has been. Many of us have seen the ups and downs of owning horses this past few months. But with that we are seeing many fine foals hit the ground around the country.

I would like to thank all of you who came to the Annual Meeting and were able to share in one of the best education days that ASHA has had the privilege to participate in. Many thanks goes out to the U of Minnesota for the opportunity to work with them and their education programs. Also thank you to Nannette Osterhoudt for her contacts and work to make it all possible.

The bulletin continues to grow and develop, and yes there are some growing pains as we start to work to a larger publication! I do thank all of you who have contributed in the past year! Your help and information is what keeps this publication fresh and inviting. I encourage everyone to send your information in! It is great to hear about your Shire news and activities.

Please keep sending your Shire photos in. We are getting a nice selection! All are welcome. Several have submitted professional work from their local photographers. Due to the late mailing of this bulletin we have extended to deadline to June 15, 2012.

Remember to send in your ads for the reprinting of the Breeder's Brochure. Kim is taking orders and we are willing to help you with putting ads together. Deadline is July!

Leanne
(406) 687-3004
bsshires@midrivers.com



ASHA Rate Schedule
To Change June 1, 2012

At the 2012 ASHA Annual Meeting, the board voted to adjust some of the ASHA Membership and Registration fees for the first time in a number of years. While domestic Annual Memberships remain the same, foreign address Annual Memberships will be \$65, \$120 for two years, and \$160 for three years. Foreign address Friends of the Shire are \$40. These increases in foreign fees are to cover additional mailing costs.

Corporate Memberships are available to Corporate Farms and LLCs at \$275 for five years. The LLC EIN number must be furnished to ASHA to complete the Corp. Membership. Horses can then be owned by the LLC.

Life Memberships are \$800 or \$175 per year for five years. Foreign address Life Memberships are \$1000 or \$215 per year for five years. Prefix registrations are \$50 and are available to current ASHA members only. Leases are \$40 each time the ASHA office processes a lease.

Duplicate (replacement) registration certificates are \$40. A notarized statement must accompany the request and fee for duplicate papers. Blood Typing to DNA Conversion is \$40. Five generation pedigrees are \$10 when ordered in conjunction with registration, \$20 when ordered separately.

Registrations are \$100 up to 6/1 of the yearling year, \$200 after 6/1 of the yearling year, but before 6/1 of the two-year-old year, and \$400 after that. (Geldings any age are \$100, and all Registration Fees are double for non-members.)

Transfers are \$40 for members and \$80 for non-members.

All items post marked May 31, 2012 will receive old rate and fee schedule- all items post marked June 1, 2012 and after will follow the new fee schedule.

A complete fee schedule will be uploaded to the ASHA website at www.shirehorse.org

**** Next Bulletin will list these in table format.**

Need More Information or Assistance?

Contact The Secretary

Office hours are 9am to 3pm CDT Tuesday, Wednesday, & Thursdays.

Myrna Rhinehart Secretary

American Shire Horse Association
P.O. Box 408 ~ Lake Delton, WI 53940

Phone: 888-302-6643

email: secretary@shirehorse.org

www.shirehorse.org

WORKING HORSES: CHOOSING A HARNESS

Leather or Synthetics?

By Vicki Schmidt

If harness makers of centuries ago could see the styles and materials available today, they would be amazed at the choices. Not only have advances in technology made the life of harnessed horses more comfortable and productive, these same advances have made owning and caring for harnesses much easier. The challenge now is deciding which harness type and material is right for you and your horse.



Lighter weight combined with the fact they are much easier to care for have allowed bio-style harness to grow in popularity.

Photos by Vicki Schmidt.

Traditionally, draft and driving harnesses were made of leather, and one thing most horse people can agree on is that nothing lasts as long, looks as good or smells as nice as quality leather. However, maintaining a leather harness can be time consuming, especially if it's used daily or has lots of chrome, silver or brass hardware.

Leather is also often heavy, and if lacking in quality or care it can weaken and break. Modern-day synthetic materials, often termed webbing or belting, can overcome some of these disadvantages. Webbing materials are usually made of nylon or polyester and help determine the strength of the harness. Plastic coatings also increase durability, as the materials are more resistive to factors such as sweat, dirt, heat, cold and moisture. In addition, sunlight, cleaning materials and improper storage don't have the same damaging effects on synthetics as they do on leather.

The family of biotype synthetic harnesses (often referred to as bio-plastics) are coated with polyurethane and are the most popular type of synthetic harness material. These products are also available in a form called Beta Series. This is used mostly in driving lines and is coated with vinyl instead of polyurethane. Increasingly popular BetaLines are sold as having the "look, feel and grip of leather." One primary advantage to drivers who show or work in wet weather, is that lines made from beta materials do not freeze stiff or get slippery when wet.

Other reasons why synthetic harnesses are popular:

- They're lightweight, easy to handle, and easy to adjust.
- Laboratory testing has determined the "breaking" point for different types of synthetics.
- They're easy to clean with a sponge, mild soaps and water.
- They're highly flexible, even in cold weather
- They're cheaper than leather and easier to pack and store.

In spite of all the advantages of synthetic materials, a well-cared for high-quality leather harness will outlast them all, and leather is still the favorite for top show harnesses. For daily use, working and conditioning horses, or if you have different sized horses, a more logical choice is probably a combination nylon or a biotype material harness.

Brass and silver hardware look great in the show ring, but can be labor intensive to maintain. The chemicals used to keep brass and silver looking nice must be used with caution. These chemicals can damage leather and weaken stitching. Though the strength of the leather or synthetic material may be maintained, breakage will occur due to weakened stitching.

A final tip when choosing your harness: a harness is only as strong as the materials it's made from. Precise laboratory testing of leather and synthetics does not include the variety of stitching material or quality of hardware. Careful inspection is required when purchasing a harness. Be cautious of stitching that is crooked, frayed or otherwise insecure. Cheaper hardware will have snap closings that do not line up and often have coatings that are pitted or peeling.



While requiring more care and often more expensive leather harness is still a favorite for the show ring.

Vicki Schmidt owns and operates Troika Drafts in Hebron, Maine. The 100- acre working farm specializes in drafts and crosses for work, sport and show.



Advertising Rates:

Support the Shire and Advertise at the Same Time!

We invite you to advertise with us each quarter. There will be two ad sizes available with the option of a text ad in the Breeder's Directory or in the classified section. We will require that all ads be sent in Jpeg or picture format and be camera ready. If you need design help contact one of the editors and we will get you in touch with someone who can help you. At this time all ads are black and white.

***** Your best deal is the Four Issues. You pay for three and get one free!**

****At this time we are not taking cover ads- if the Bulletin expands to that point we will put the inside of both the back and front covers up for purchase.**

*** Classified Ads must be submitted in writing and renewed each issue.**

Contact: *Leanne Hoagland* bsshires@middrivers.com
406-687-3004 (H)/ 406-939-1263(C)

<u>Ad</u>	<u>One Issue</u>	<u>Four Issues</u>
5 X 7 Inch Landscape	\$100	\$300
3 3/4 X 5 Inch Portrait	\$75	\$200
Breeder's Directory Text Only <i>30 Characters per line including spaces. Six Lines of text total</i>	\$35	\$110
Text Only Classified Ad <i>30 Characters per line including spaces. Six Lines of text total</i>	\$10.00 Per Ad Per Issue	N/A

<u>Newsletter</u>	<u>Estimated Mail Date</u>	<u>Ad Copy Due</u>
Winter	January 15	December 1
Spring	April 15	March 1
Summer	July 15	June 1
Fall	October 15	September 1



We Want to Hear from You- THE MEMBERSHIP:

In the 2011 Bulletin we have a new section called "Meet the Membership". In order to make this section the best it can be, we need your input as a member. There are two parts to this section of the bulletin. Details for each section are listed below. The third and final way you can take part in the Bulletin is by advertising with us:

Individual Member Highlight

We will highlight a few members in each bulletin. Below are several questions we would like to have you answer and return to us with a picture to print with your answers to the questions.

Questions to answer: (About 300 Words)

- 1) Name and business name if any
City and State
Email address/ Phone if you want
Family
Prefix
- 2) What is your background in horses and how did you get into Shires
- 3) Shires Owned:
- 4) What do you do with your horses?
- 5) What are your future goals with your horses?
- 6) What would you like to see in the future for / from ASHA?

Member News

Send us pictures or small write ups (paragraph to a few sentences) of what you are doing or is interesting with you and your Shire horses.

- Promotional
- Just for fun
- Shows
- Pulls
- Trade shows
- Awards and honors

Contact YOUR Editors for More Info!!

Leanne Hoagland
(406) 687-3004
bsshires@middrivers.com

Kim Mutchison
(970) 625-1142
thshire@sopris.net

*** These sections will vary in size due to submissions and space available.*



(Interim) Secretary's Report

American Shire Horse Association

2012 Annual Meeting

Sunday, February 19, 2012

First, the basic statistics from the registry from 2011:

Total registrations 129 (46 stallions, including 1 amnesty; 76 mares, including 12 amnesty; 7 geldings)

Total transfers 164 (44 stallions, 105 mares, 15 geldings)

Sporhorses: 5 registrations, 9 transfers

First six weeks of 2012: 16 registrations (3 stallions, inc. 2 amnesty; 13 mares, inc. 2 amnesty + 1 from 2009)

28 transfers (5 stallions, 15 mares, 8 geldings)

28 pending registrations (2 with hair @ VGL, 5 amnesty, a few quite old [more than a year ago])

Sporhorses: 2 transfers, 3 pending registrations

Current membership as of 2/15/2012 : 258, of which over 100 are life members. Almost 90 members whose member-ships expired 12/31/2011 have not rejoined (I know a few are planning to rejoin at the meeting).

Kim will be presenting the financial reports but the short version is that cash is up over 40% from a year ago. We have over \$35,000 (\$7,000+ in checking, \$12,000+ in a Life Member money market not for operating funds, and \$15,200+ in a CD as our operating fund reserve). All board members can review the association's financial activity online at any time. With annual expenses running around \$40,000, we are getting closer to our goal of having 6-months' operating funds on hand, not counting the life member funds.

So what's the reality behind the numbers? First, registry activity was up significantly from 2010 – 37% more horses registered, 71% more horses transferred. Some of this activity obviously resulted from the amnesty program, and the increase *may* not be entirely good news. If people are selling horses either because they cannot afford to keep them, or because they have lost interest in Shires, that is not good except as it may bring new owners into the breed.

I am most concerned over the drop in annual members. I ran across some membership statistics from over 10 years ago. In 2000, 2001, and 2002 we lost 50, 65, and 79 annual members respectively – but at that time we had between 450 and 500 annual members at year-end, not 240 as was the case this year. Members are the life-blood of the organization; we can't afford to fall below a critical mass. I encourage each of you to reach out to members who have not renewed, consider whether your spouse or significant other should be a member as well, and consider giving the first year's membership to the buyer when you sell a horse, or say that you'll pay for the transfer (if you weren't going to – it seems that about half of sellers do) if the buyer will join the association. That step alone might well bring in 40 or 50 new members each year.

So what else has happened this year? We installed a major upgrade to the software program we use, with some specific tweaks I asked of the programmer. For example, our rules state that a horse may only be registered as gray if it has a gray parent (because gray is caused by a simple dominant gene, which a horse *must* receive from one of its parents). Back in the olden days when I was secretary previously I pretty much knew who had gray horses since

at here aren't that many. But having been "off the bike" for a while I managed to register a filly as gray when both her parents are black. A little embarrassing when a board member brought it to my attention, but with the cooperation of all involved we corrected that and I had the programmer add a pop-up that now specifically asks that question.

The office runs much more "electronically" than when I handed off to Sheila, including banking, DNA kits, scanned-and-emailed applications (really handy for things like missing signatures). I think you will see us move even further in that direction in the next few years.

We received a donation from the Draft Horse Journal in memory of Maury Telleen, who was among ASHA's first life members when the association reorganized in 1967. They asked that it be used to help with the costs of this meeting.

Most important to all of us, of course, is that through a deliberate search process the board has hired Myrna as ASHA's new secretary. You may have noticed that we shared the secretary@shirehorse.org email since January. She's made two trips to Colorado for training and has pretty well mastered our core processes: money, memberships, checking out incoming applications and ordering DNA kits, registering horses when the parentage verification comes in, and transfers. It happens that we've done very little with sport-horses and even less with foreign registered horses, but we had already planned that there would be additional training during the spring. The budget includes Myrna's travel to the Clyde sale, the national show, and the two inter-registry meetings I have always found invaluable.

Thanks again to the board for the privilege of running the office (there *were* days, though...). I am happy to hand off to someone as competent, enthusiastic and grounded as Myrna. If you wind up with some particularly weird registry situation, I am happy to help *if* Myrna wants me to, but I'm really glad to be getting back to visiting grandkids without feeling guilty about abandoning the ASHA phone line, and looking forward to sleeping in the barn waiting for foals come spring.

Sharon McLin

NEW!! The office now can take credit cards!
No need to log into PAYPAL-
Just contact our office and pay with a real live person!

How do I know what size trailer will best fit my horse?

By Tom and Neva Scheve

An inside width of 6' (a trailer quoted as having a 6' width may vary by a few inches) with a height of 7' (square sided roof rather than rounded), and a total stall length of 10', will fit a horse from about 14 hands up to about 16 hands. Add 2" to the roof (7'6"), and the horse can be up to 16-3 hands. From 16-3 hands up to 17 hands, you should add another 2" (7'8") to the height, and 6" to the length from butt to breast and 6" to head area (11' total stall), or just add 1' to the head area depending on the "butt to breast" size of your horse.

If you're roads are not too narrow, you can also go to a wider axle, and have an inside width of approximately 6'8" (102" axles) with no wheel wells inside the trailer. For horses up to 18 plus hands, the trailer should have the 6'8" width, 7'8" height, and 11' total stall length. For horses, such as draft horses, that are approaching 19 hands with weights approaching 2000 lbs., the trailer should be close to 8' tall with 12' total stall length, with extra floor supports, upgraded axles and tires. At EquiSpirit, we have three size options available on all are models (straight loads):

Standard	10' stalls, 7'6" height, 6' width	14 to 16-3 hands
XL (Extra Large)	11' stalls, 7'8" height, 6' width (96" width axles)	16-3 to 17-2 hands
XXL (Double Extra Large)	11' stalls, 7'8" height, 6' 8" width (102" width axles)	18 hands plus
Custom Built Size	Built to size of horse	19 hands plus

Be careful if a trailer company does not have various model sizes in their lineup, but is just adding footage and width without upgrading tires, floor structure, axle rating, and re-engineering the balance of the trailer.

Regarding slant loads:

Most slant loads will not fit horses over 15-3 hands comfortably. Most slant loads that quote 10 to 11 feet on the diagonal (far corner to far corner) will, in reality, will have stall lengths that are only be 8 to 8 ½ feet long (measure down the center). Some slant loads purport that they have warm blood size stalls, but the only way a slant load can fit larger horses (since there are legal limits to how wide a trailer can be, and there are wheel wells in all stalls up to 4 horses) is to widen the stall, or take out a divider. When this is done, a horse can stand more front to back. The smaller the horse, the better it will fit in a slant load trailer. It's our opinion that the only positive trait to a slant load is that you can stack more horses in a shorter trailer.

Is a ramp better? Or a step-up?

A well designed, easy to lift, low angled ramp with springs across the bottom of the ramp (not on the sides) is better than a step up, especially on all two horse straight load trailers. Without a ramp, there is always the danger of a horse backing out, stepping down, and sliding under the back of the trailer. A hot day, a bee in the trailer, etc., can cause even the best trained horse to want to scramble out quickly. A ramp eliminates the possibility of a horse sliding under the trailer from ever happening. (Note: don't let some dealer tell you that a horse can slide under the side of a ramp or step off the side and get seriously hurt).

NEW!

Scotch Bottom Shoe Pin

\$60.00 Each / \$5.00 Shipping

~ ASHA Exclusive ~

Made from 925 Silver

They were custom designed by a jeweler in Houston of a Scotch Bottom, similar to the one Vicky wears as her good luck pin.

First 20 Pins Donated by: Hillary LaManna

ALL PROFITS TO ASHA

For Ordering Please Contact:

**Karla Stoner (301)874-3250 Email: bloomforge@peoplepc.com
Payment Must be Made Before Shipping**



Should I tie my horse's head or leave him loose?

We feel that the best stall situation is one in which the horses are traveling straight, head forward, no lower center divider, no back post, and the horse's head is tied with enough rope to let him stretch his neck, especially if he is eating hay in the trailer. He will need to be able to cough out any hay that might get into his respiratory system. A quick release snap is important, but not one that will release on its own. We have designed and developed a special lead rope that is adjustable in a way that a horse can't get caught in it, and will quick release on both ends.

Is the slant-load style the best? Why or why not?

It's our opinion that the only advantage to a slant load is exactly the same reason why they were first developed. One can stack more horses in a shorter trailer. Although many articles have been written since then that have tried to support that slant loads provide a better ride for horses, none that we have found, have been accurate. The negatives to slant loads are numerous. If a front horse has a problem, you can't reach it without unloading the other horses (unless you have a front unload ramp). Tow vehicles are always moving forward even when they make turns. During all that stopping and starting, a horse needs to plant its front and back feet for balance, rather than standing on an angle where its constantly falling on its front forward leg, and rear hind leg. The stall length is rarely big enough unless your horses are very small. Most horses that are 16 hands plus will have their noses pushed up against the road side wall, and their butts squeezed against the ditch side wall. The size problem comes from the limitation of what the legal width of a trailer can be. It can go up to 8'6" but the wheel wells are then inside the trailer and are still restricting the horse's space.

How much ventilation does a horse really need? Summer? Winter?

In the summer, horses need as much ventilation as you can give them. This can be provided by having large windows on the sides of the trailer, in the rear doors, and near the horse's heads. Also, there should be at least one roof vent for each horse. On tag-alongs, a bulkhead window with front opening windows in the nose of the trailer can provide additional ventilation. Oscillation fans that run off your tow vehicle battery (the same as your interior lights) can provide additional ventilation if you get stopped in traffic. Screens are important because they allow the air in without letting in insects, wasps, cigarettes, and road debris.

In the cooler months, it's nice to have an dual wall, insulated trailer that will hold in the horse's body heat. But it is still wise to crack windows, and adjust vents (dual scoop vent) to allow the air to flow freely through the trailer.

Where do the vents do the most good?

Above their heads.

Should I bed my horse when hauling? If so, with what? Straw? Wood shavings? What is best?

Using or not using bedding, depends on your horse. Some geldings don't like to "splash" themselves in the trailer. A coating of shavings, or hay, can solve this. Otherwise, it is not necessary. However, we have found that shavings left in a trailer can draw moisture and cause the inside of the trailer to "sweat".

Northeast Shires

is standing three outstanding Shire stallions:

We provide the same live foal guarantee for frozen semen as we do on shipped chilled for these three stallions. Please visit our website for breeding contracts and pictures of our stallions.

Epsom, NH
603-930-6975

Janet@ShireHorse.com
<http://www.ShireHorse.com>

Sladbrook Jubilee Spirit - \$1000/LFG

Rushall Isaac - \$1000/LFG

Hickory Hill Nitro of the Northeast -\$600/LFG

Northeast Shires is actively preserving the genetics of the Shire.

We collect and freeze embryos and semen from our client's quality Shire stock. Once preserved in liquid nitrogen, semen and embryos remain viable indefinitely.

Contact us for more information.

“Dad, can I have a pony?”

It was a routine visit to see my dad. The bright sun was streaming in his window and the vibrant pink blossoms of the rhododendrons were swaying in the brisk breeze. I chatted about what a perfect hay drying day it was. How the crew would be happy with the 500 bales coming in that afternoon, and if the weather held we'd have another thousand in by the end of the week. Dad was known for his working-man's handshake, so it was no surprise when he squeezed my hand really hard. It was a surprise when he didn't let go for a few minutes. And when he did let go it was forever.

I thought about not going to work the next day, but there was one project depending on my being there. I remembered Dad always said “If you say you're going to do something, do it: and “there's no excuse for not getting a job done unless you're dead or in the hospital”. So I went to work, promising myself after that one task, I would take a week off. My co-workers arrived as usual; all saying hi, how's the coffee this morning, and a variety of other chatter as they walked past. My friend Mark stopped to chat that morning, “Vicki, I want you to know you were right. We bought our daughter a horse and it's the best thing we ever did”. Someday, when I can compose myself properly, he will know how much those words meant to me.

As a kid I never remember not wanting a horse. We had cattle but to me they were just odd shaped horses. I'd sit on the backs of the tamer cows and steers when they were tied in their stalls and I remember trying to weave their short manes into braids like fancy show horses. One morning my dad was rototilling the garden and I

was walking behind him picking worms into a can of dirt so we could go fishing later on. When he shut off the rototiller I asked if I could have a pony. He said “may someday”. I ran into the house all excited and told Mom, “Dad's getting me a pony on Sunday”. Needless to say, the next few minutes were mass confusion and by the end of the day I had learned my first lesson in disappointment: There is a big difference between “someday” and “Sunday”. That afternoon I lead a weanling calf into the barn, saddled it with a rug and a piece of rope, swearing I was going to ride. A neighbor, standing beside my dad and talking cattle commented. “You really need to buy her a pony”.

That week Dad traded some work towards an old saddle he'd found in a friend's barn and brought it home to me. I cleaned it up and though I'd struck gold. The calves weren't impressed and the girth wasn't long enough to go around the cows. But it was a saddle and for some reason it didn't bother me that I didn't have a real horse to put it on. Sunday morning came and I woke to the cattle dealer's truck grinding gears as it came into the barnyard to pick up calves. A horse's whinny bolted me out of bed and crashing down the stairs. And there, standing in the pasture was not one, but two, of the most beautiful ponies in the world.

For next few days I brushed and braided. Cleaned water buckets and stalls, saddled ponies, and struggled to bridle as I was too short, but eventually got the job done. Within a couple of weeks I could actually climb up onto the smaller pony, named Dynamite, all by myself. Suffice to say, he lived up to his name. Not only did I learn to ride on that pony, I also learned how to fall off, land on my feet, and get back on. I learned that scrapes, bumps and bruises all hurt, but all eventually heal. Some leave scars but even those fade with time. I also learned that just because you are nice to something doesn't always mean its going to be nice back to you.

Between that pony, my mom and dad and the land I learned a few other valuable lessons as well:

Other beings will often help you find your way. The few times I explored trails and didn't know where I was my pony found the way back to a place I knew. He also taught me sometimes its better to listen and cross the brook further downstream. The waters may look calm, but sometimes others know what lies beneath is not safe.

Make sure every being that touches your life has a warm and safe place to rest. Whether a high spot of dry ground, the shade under a big tree, a softly bedded stall for your livestock, or sharing your home with a friend you haven't met yet. Humans and horses both do best with a good night's sleep and an occasional nap.

Share drinks with friends whenever you can. Morning coffee, afternoon iced tea, or a cold beer after a days work -all go better with friends. And never ask your horse to drink out of a bucket or trough you wouldn't drink out of as well.

It' OK to not forget, but forgive, and pay attention next time. Sometimes it years before a lesson learned is realized. Life's bumpy rides, broken bones, bruises and bucks are often caused by things out of our control at the time. The way horses and people are raised sometimes makes them want to kick you. Don't take it personally. Learn to read the signs and dodge the kick, and above all else, never kick back.

A fifty dollar pony is the best therapy for a kid. If your kid wants a pony and it's not an option as this time, find one they can visit, brush, and help care for. There is nothing like the nuzzle of a pony to compliment the love of a parent.

Written in honor of my Mom and Dad, and all the great horses who have touched my life. .

Vicki Schmidt, July 2010 <http://www.troikadrafts.com>

Tally Ho Shires
 Kim, Shaq and Alex Murchison
 970-625-1142
 www.tallyhoshires.com

Four Decades of Quality & Champions

COMING IN JUNE!!

3-day Driving Clinic ~ June 8-10, 2012
 Here at our ranch in Colorado.
 Harnessing, hooking and driving singles, pairs and the 4-up.
 We stress safety for both horses and handlers.

Standard of Excellence

Meet Your New Instructor: Shires Help in Local College Course

Bar Harbor, Maine – Sandi Read & Marc Jaffrey of **Wild Iris Farm** are teaching an introductory college course this spring to students from *College of Atlantic*, located in Bar Harbor, Maine. The course, “The Draft Horse and Its Use on Our Farms and In Our Society” features the Farm’s Shires in the role of teaching assistants, helping the students learn about draft horses, their history, how to care for and handle them, and how they have an important place in a post-petroleum economy. The course is part of the college’s Sustainable Food Systems program.

Over the ten week semester, students will be taught how to take a horse’s vitals signs; grooming & hoof care 101; the parts of a harness and how it is correctly placed on the horse; ground driving; hooking and driving a single horse in forecart; farming applications such as harrowing and log hauling; hooking and driving a team in a wagon for people and/or hay transport. Wild Iris Farm currently has two mares in foal and the students will actively participate in the prenatal care & post natal care of the mares and their foals.

Wild Iris Farm is a 35 acre family owned farm located in Bar Harbor, Maine. Sandi is the principal owner and Marc is the Manager. Together they own 8 Shires. In addition to teaching this course, they also operate a 10 stall horse boarding facility as well as offer horse-drawn carriage rides in town and for weddings and special events. For more info visit www.WildIrisHorseFarm.com

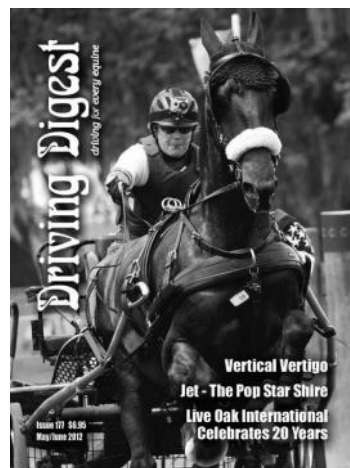


MEMBER'S NEWS:

We (myself & The Kent Wilson Jones Company) just spent the weekend (April 27-29) promoting the Shire breed at the Minnesota Horse Expo. Davies - 9 yr old Shire Gelding - Minnesota Horse Expo; April 28, 2012. Driving to the Lee & Rose Warner Coliseum to demonstrate the shire breed during the Breed Demo. Driven By John Nelson, Madelia MN - Horse owned by The Kent Wilson Jones Company - Lake Crystal MN



J Ann Brodland is happy to share that a dear friend is the subject of a recent feature in *Driving Digest* Magazine. Susanna Thompson, - this one's for you and Jet. Keep watching for articles and great photographs from Judy as she works to promote the Shire.



Big Sky Shires & Equine Services

www.bigskyshires.com

~Raising Quality Shire Horses ~
Mind, Movement & Conformation

Brett, Leanne & Connley Hoagland
Glendive, Montana
Phone: 406-687-3004
Email: bsshires@midrivers.com

2012 Foals Arriving

Currently 3 Fillies For Sale
Reasonable Prices, Professional Services



The Foundation Starts Here

HOW TO: Find Information on ASHA Shows on the Website

Go to ASHA's website - www.shirehorse.org

When the home page appears, there is a line of menu items just under the masthead at the top of the page.

'Shows' is in the center of that string. If you place your cursor over 'Shows', a menu pops up with the topics listed below. Clicking on a topic will take you into that area. A description of what is included under each topic appears under it.

Upcoming Shows

Scroll down the page until you get to the show you are looking for. Each show is listed as a Regional, Local or National. Coordinator contact information, website for the show, dates, premium book information, judges, closing dates for entries, lodging information and other details may be provided. If it is early in the year, some information may not yet be available. Check back for additional details.

Show Results

Results of ASHA shows from 1996 to the present

Click on the small arrow to the left of 'Select Show' to drop the list of shows. Scroll down the list to the show you want results for and click on it to highlight. Then click on 'Select Show' for those results. You can also export the results to a word document by clicking on '[Click Here](#)' just under the 'Select Show' button.

Point Results

Premier points standings for 2008 to the present

The topic opens on current year standings. Previous years may also be selected Show and class details for each horse may also be viewed by selecting those options

All North American Entry Form

Entry form and rules for the Draft Horse Journal program

SAC

(Shire Alternative Competition Program started in 2010)

Rewards Shire and Shire sport horse owners for participation in non ASHA Shows or competitions and activities other than shows (competitive trail rides, Pulls, etc.)

Explanation of the program, entry form and rules and list of awards and pictures

USDF (United States Dressage Federation)

Adequan™ All Breeds Awards

Explanation of awards and link to USDF website for more information Copy of June 2012 USDF Connection magazine breed of the month article on Shires

Show Eligibility Rules

Shires must meet these rules in order to show in ASHA sponsored shows

Hints for Showmanship

(Small arrow to the right drops a sub menu for **Etiquette** and **Youth Guidelines**)

Etiquette - how to properly prepare and show your Shire at halter

Youth Guidelines - to assist youth in properly preparing and showing Shires

ASHA Show Guidelines

Outline for the American Shire Horse Association Board of Directors, Show Committee (and sub-committees) and the general membership. Set up to help promote the Shire horse through shows and consistent showing practices. It establishes national and regional shows and procedures to be followed at these shows. It creates a method of coordinating Shire exhibitor and management interests at shows and provides recommended responsibilities of the show exhibitor.

ASHA Points System

Explanation of the Premier Points and Horse of the year Program

Foal Heat Scours

By Christina Cable, DVM, DACVS

Can you please tell me what foal heat diarrhea is, and what causes it? Some people say it's because of the mare's hormones being transferred in her milk during foal heat, but other people have said that is an old wives' tale.

Foal heat scours (diarrhea) is a term used to describe the diarrhea that occurs in foals between seven and 10 days of age. It is called foal heat diarrhea because the foal's dam usually is experiencing her first heat or estrous cycle (called the foal heat) since foaling during this time. It originally was thought that the heat cycle in the mare resulted in the foal's having diarrhea due to changes in the mare's milk composition. However, orphaned foals or foals raised separated from the mare also have developed diarrhea during this time.

The main distinguishing factor between foal heat diarrhea and other infectious causes of diarrhea--such as rotavirus or a bacterium such as *Salmonella*--is systemic illness. Foals experiencing foal heat diarrhea are not systemically ill, meaning they do not have a fever, they remain bright and alert, and they continue to nurse well and remain active. Foals with infectious causes of diarrhea usually will be depressed and quiet, they do not nurse well, and they usually have a fever. Furthermore, foals with foal heat diarrhea have a mild, self-limiting diarrhea, whereas foals with infectious causes often have profuse, watery diarrhea.

Veterinarians believe that foal heat diarrhea does not result in the foal's becoming systemically ill because the diarrhea is caused by the changing bacterial flora within the foal's gastrointestinal (GI) tract, rather than an infection of the GI tract from pathogenic (disease causing) bacteria or viruses. As the foal's normal resident bacterial flora change, it causes a transitory diarrhea, which resolves in a few days without treatment.

You often will see young foals eating feces (coprophagia) during this time. Although this behavior is not particularly pleasing to watch, it is normal for young foals, as we believe this is the way young foals populate their GI tract with the bacteria that are in their environment.

Foals at this age also can succumb to other, more serious forms of diarrhea. There are several ways to tell the difference. First, determine if your foal has a fever. A foal's normal rectal temperature is between 99° and 101.5° F. Second, monitor your foal to make sure he/she is nursing adequately. If the foal is not nursing several times an hour, or if the mare's udder is very full and possibly dripping milk, then most likely the foal is not nursing adequately and is sick. Third, monitor your foal for diarrhea. Foals which are nursing will produce a yellowish, pasty manure (milk feces), which is totally normal. Foals with diarrhea will have more watery, yellow-brown feces that often stains their hindquarters.

Foal heat diarrhea usually results in only mildly loose or slightly watery diarrhea. Foals with other causes of diarrhea often will have profusely watery diarrhea. Foals with foal heat diarrhea rarely need treatment. However, sometimes they require oral or intravenous fluids to replace the fluids they have lost through the diarrhea. Treatment with probiotics or even yogurt can aid in populating the GI tract with normal bacteria in an attempt to help reduce the diarrhea; however, antibiotics are not necessary for true foal heat diarrhea.

If your foal has any of these signs, or if you are unsure about your foal's diarrhea, your veterinarian should be called to examine the foal immediately, as foals with infectious forms of diarrhea will need prompt treatment with antibiotics, intravenous fluids, and anti-ulcer medications.

As a sidenote--one of the tell-tale signs of foals which have had diarrhea is the loss of hair on the foal's backside. This is called skin scald and is a result of skin irritation from the diarrhea. Skin scald can be prevented by using petroleum jelly applied on both sides of the foal's backside two to three times a day. This treatment prevents the diarrhea from contacting the foal's skin and causing scalding. If the foal is already covered with feces, wash the foal's backside and tail with a mild soap, dry with a soft towel, then apply the petroleum jelly or Preparation H. The Preparation H will help soothe the scalded skin. Even with the use of the petroleum jelly, washing usually is necessary at least once a day.

Christina Cable, DVM, DACVS, is a 1994 graduate of the University of Georgia's College of Veterinary Medicine. She and her husband, Mike Ball, DVM, currently operate a private practice named Early Winter Equine Medicine & Surgery in Ithaca, N.Y., doing primary care, consultation, performance horse problems, and clinical pharmacology. http://www.aaep.org/health_articles_view.php?id=62



2011 All-North American Contest Update

Thank you to all the participants in 2011. Your support is greatly appreciated!!

The All-North American Committee is working hard and looking forward to another successful year.

Submitted by,
Danelle Kinney

All-North American Committee chair



2012 Show Schedule - Through Mid-August:

Page 11

Note: Qualifying shows for *the All North American Contest* are coded as follows:

AA show (1st - 4th), **A** show (1st - 3rd), **B** show (1st or 2nd), **C** show (1st only)

The 2012 NATIONAL SHIRE SHOW

To be held at the **Keystone International Livestock Exposition (AA)** at the Farm Show Complex, Harrisburg, PA, October 4-6. (www.keystoneinternational.state.pa.us) Halter classes tentatively scheduled for Friday, Oct. 5th. Premium books will be available on line later this spring. Show office (717-787-2905). Coordinator: Karla Stoner, phone: 301-874-3250, email: bloomforge@peoplepc.com

Saratoga County Fair, Balston Spa, NY - (Local show) - July 19 & 20, 2012. Contact Tom Armer: 518-885-5696 or email: tarmer@nyscap.rr.com

Ohio State Fair, (B), Fairgrounds, Columbus, OH (**Regional**), Draft horse show August 2-3. (<http://www.ohiostatefair.com/osf/osf3.htm#OpenHorse>), Halter and hitch classes. Premium lists available late April or early May. Coordinator: Todd Riedel, phone: 330-419-0346, email: TrailLightFarms@yahoo.com

Colorado Draft Horse Classic, (B), Garfield County Fair Grounds, Rifle, CO (**Regional**). August 5th. Website: www.codrafthorseclassic.com. Halter classes in AM and hitch in PM. Premium book available on line in June 2012. Coordinator: Kim Murchison, Phone: 970-625-1142. Email: thshire@sopris.net

Addison County Fair, (B), Middlebury, VT (**Regional**) - August 10-11. Halter and hitch classes. Premium books: Kathy Kennett 1716 VT Route 22A, Panton, VT 05491 or email: kkennett@together.net Coordinator: Turie Sorrell, phone: 802-695-2980, email: tsorrell@myfairpoint.net

Skowhegan Draft Horse Show (B), Maine State Fair, Skowhegan, ME (**Regional**) (<http://www.skowheganstatefair.com>), Mid-August. Halter classes - 9:00 AM. - Hitch classes 5:00 PM. Co-coordinators: Vicki Schmidt, troika@megalink.net and Jenny Cournoyer, squantumshires@yahoo.com.

Colorado State Fair, Pueblo, CO (**Regional**). August 30-31. Website: www.coloradostatefair.com Halter and hitch classes. Coordinator: Kim Murchison, Phone: 970-625-1142. Email: thshire@sopris.net

New York State Fair, State Fairgrounds, Syracuse, NY (**Regional**) Aug28 -Sept 3, 2012 Show Coordinator: Vicky McCaffrey Phone: 518-872-1295 Email: oxkill@capital.net

Updates and balance of ASHA shows will be printed in the Summer Bulletin - For additional information, visit www.shirehorse.org and click on 'Shows' and then 'Upcoming Shows' on the menu, or contact the show coordinator.

Other qualifying shows of the 2012 All North American Contest through late-August:

Canadian:

CSHA National Show, (AA) Calgary, Alberta, Canada Calgary Stampede, Draft horse show July 6 -9, website: <http://aq.calgarystampede.com>

Central Alberta Draft Horse Classic, Olds, Alberta, Draft horse show June 30 - July 2. website: www.albertadrafthorseclassic.com

Vermillion Fair, Vermillion, Alberta, late July. Website: www.vermillionfair.ca/

U.S.A.:

Nebraska State Fair, Lincoln, NE (C), Aug. 24 - 26, website: www.statefair.org

MN State Fair, St. Paul, MN (C), Aug. 22 - 28, website: www.mnstatefair.org

Champlain Valley Fair, Addison, VT (C), late Aug. - early Sept., info: 802/878-5545, www.cvexpo.org

BREED PROMOTION

MANY THANKS to all these members for their effort and dedication to promote **SHIRES!!** If you have an upcoming promotional event for Shires or recently participated in an event, we would like to publicize it in the Members' Bulletin. We can also help with Shire and ASHA information for display and handout. Contact Karla Stoner (bloomforge@peoplepc.com).

Recently Completed Events:

Illinois Horse Fair, Springfield, IL – March 2 - 4, 2012. Jane Hoffman braved tornados and cold weather to represent Shires at this event again. Her horse Gus was especially awesome. Jane would love to have other Shire owners and Shires there as well, so if you are interested in participating next year, contact Jane at jane_hoffmann@yahoo.com

Nebraska Horse Expo, Lincoln, NE, Lancaster Event Center – March 7 - 9, 2012. Brochures for ASHA and Shire Breeders were available through the courtesy of O'Bannon's DunRovin' Ranch, Chilhowee, MO and to Tara Stuart, an organizers for the Kid's Corral youth area. Many thanks to the O'Bannons and Tara!

Iowa Horse Fair, Des Moines, IA, State Fair Grounds – March 30 – April 1, 2012. Clark Jenson and family represented Shires and ASHA at this event again this year with breed stalls, demos and an information table. They reported large crowds with good contact for Shires and handed out a number of the ASHA and breeder's brochures.

Equine Affaire, Columbus, OH – Ohio State Fair grounds (Expo Center), April 12 - 15, 2012. Once again there will be breed demos, a breed stall and an ASHA information/merchandise table. Several members will be bringing Shires to the event. There will be pictures and more detail in the Summer Bulletin – Organizers: Todd Riedel and Emily Cullison; TrailLightfarms@aol.com

2012 Annual Clydesdale Sale will include Shires this year, Michiana Event Center, Howe, Indiana – April 26 – 28. Thirteen Shires have been entered in the catalogue. AHSa will have a booth at the event as well. We hope to see a lot of ASHA members at this sale. Contact any ASHA board member for more details.

Rare Breeds Show, Garfield Farm, La Fox, IL – May 20. This event is sponsored the American Livestock Breed Conservancy. Breeders from around the Midwest display rare and historic types of livestock. Jane Hoffman has been taking Shires to this event for many years and they are always a BIG hit. Thank you Jane!

Upcoming Events:

2012 Horse Progress Days, Clare, MI – June 29 & 30, 2012 – ASHA will be sharing a booth with the Northern Michigan Draft Horse and Mule Association at this event. Dan Hubbell and Butch and Katie Ruppert are coordinating this event for ASHA. Contact them if you can help out or bring horses. Dan: dan@hubbellawoffice.com , Butch and Katie: fruppert@netonecom.net , Michigan members don't miss this event. It is only in MI once every 5 years!!

Equine Affaire, West Springfield, MA – Eastern States Exposition Grounds - November 8 – 11, 2012. Shire breed stall and demos, ASHA booth. More details to follow. Contact Vicky McCaffrey oxkill@capital.net or Karla Stoner bloomforge@peoplepc.com

ASHA Mission and Purpose Statements

Mission Statement

The Mission Statement of the American Shire Horse Association is to maintain the integrity of an accurate registry and promote the Shire breed through excellence.

(Developed at the 2002 Annual meetings)

Purposes: (summarized from the ASHA by laws and articles of incorporation)

- To form, conduct and operate a non-profit organization composed in whole or in part of persons, firms and/or corporations having interest in the breeding and improvement of Shire horses;
- To foster and preserve the traditions pertaining to the Shire horse;
- To encourage original investigations in determination and development of the best types of horses and the breeding to only purebred sires;
- To assist in procuring and making available for breeding suitable stallions and mares;
- To collect, revise, preserve and publish the history and pedigrees of purebred horses, particularly Shire stallions and mares, under such regulations as may be prescribed by said organization;
- To do all and every other act or thing necessary, suitable and/or proper for the accomplishment of all or any of the purposes or in the furtherance of any of the powers herein set forth and to do every other act or thing incidental to or appurtenant to or connected with said powers.



Are you taking your Shires to a Horse Expo or event to “promote” the breed?

ASHA offers a few \$150 stipends to the first members that apply (and qualify) for them.

Please Contact **Karla Stoner**

(301)874-3250 or Email: bloomforge@peoplepc.com

ATTENTION MEMBERS: Your help is needed— We NEED PICTURES!

In the past few months the office and editor have been slammed with picture and information requests from other publications. This is a great opportunity for the SHIRE! However, in the process we have found that we do not have a good means to supply this information in a fair and equitable manner. With that said, your Editors are putting together a “Press Packet”. This will be a CD that will include multiple pictures and information on the Shire and ASHA.

What we need your help with is the pictures. Each member will be able to submit up to **four** photos to the committee **by June 15th, 2012**. Once we have all the photos and releases signed, the committee will pick which photos will be included in the Press Packet (about 20-30 photos total will be chosen— with a annual review and chance to resubmit pictures). The photos will be printed throughout the year in bulletins We are asking that any member who is interested in submitting pictures, email them to **Leanne Hoagland Editor at bsshires@midrivers.com**. Include descriptions of the photos in your email. Some categories we are looking to fill are:: 1) Working Shire, 2) Shires at Show, 3) Riding Shires, 4) Foals and young stock, 5) Shires in History, 6) Pleasure Shires, 7) Pulling Shires, 8) Shires at Play, 9) Just Shires and 10) others.

Here are a few of things that we need in order to use your picture:

- 1) High Resolution— 300 dpi or higher. At least 2 MB or higher in digital form.
- 2) You must own your picture and sign a photo release so that ASHA is free to print the photo. (the release is on page 22 of the bulletin) You must sign and can either mail or email the release to the secretary. If the photos were taken by a professional photographer and are signed—the release needs to be completed by the photographer of the image. NO PROOFS or Photos with signatures removed will be accepted.

* The committee will be set up at the 2012 Annual meeting. If any members are interested please join.

The Shire Sport Horse: One Owner and Her Experiences

By: Alison Graves Knickerbocker



Windsor, 1997 Shire/TB cross

I began horse shopping in June of 2002, when I was forced to retire two of my geldings prematurely due to arthritic issues. I was looking for something with dressage potential, preferably a youngster with not a lot of training on him, so I wouldn't have a lot to "undo." This was in the days of a large classified ad section in our paper (way back then!), and

after looking at a couple of young horses in my area without any luck, I came upon an ad for a Shire/TB cross gelding, 5 years old, unstarted.

5 years old and unstarted? You don't see that too often... I called the seller. She emailed me a couple of unflattering photos of "Windsor." He was standing in a small paddock, ungroomed and sun-bleached. She didn't have any video, and couldn't get any for me. He was stabled 2 hours from me, so after a few days of deliberating about him and whether he was worth the drive, I decided to give him a chance.

I arrived at the stable before the seller did, and found someone to direct me to his paddock. When I walked up to him, he walked over immediately to introduce himself (and to see if I had treats, I'm sure). His feet were a mess, he was not in any sort of condition at all, but he was well-fed and had a bright attitude. Still waiting for the seller, a couple of boarders came by and asked if I was going to buy him. They also told me he'd been there for 7 months and the seller never came out. Which meant this horse hadn't been out of his small paddock for 7 months! By this time, the seller arrived and she put a halter on him and we walked him to a round pen to turn him out. He was a little nervous walking from his paddock through the ranch to the round pen, but not overly so. When she set him loose in the round pen, he stood there for a few seconds while she walked out, and then exploded. His hind foot reached through his front feet, practically hitting his muzzle! That was it for me! This horse was an athlete, no ifs, ands, or buts. I told her right then I'd take him if he passed vet. She got kind of tearful at that point, explaining she'd been through an acrimonious divorce, that she and her ex used to breed Shires and other drafts, and that Windsor was the last of those horses, of those happier days. Those circumstances were also why he hadn't been started, and why she couldn't bear to be around him.

He passed his vet check easily, and I brought him home. He took to his training incredibly easily, and quickly earned the nickname "Windsor the Wonder Horse." I was on his back within a week or two, and he continued his stellar progress. I don't think I've ever met a horse as willing and eager to work and learn as Windsor was. And is. I can't even explain to you how comfortable he is to ride: light in the bridle, smooth gaits, incredibly flexible. Actually, flexible to a fault! He's like riding a wet noodle - he sure taught me to be more aware of my balance and lightness and effectiveness of my aids!

I started showing him the following spring at Training level, and qualified for the state championships (also for the regional USDF, but I had the wrong type of membership, so wasn't able to show him in that division - I was new to this "successful" showing thing, and was learning as we went along). Each year he advanced a level and we qualified every year through Third Level, even winning the state championship Second Level Freestyle (reserve for the region) in 2006. He has a huge fan base, even when we didn't show well, people just love him and his attitude. I can only explain it this way: Windsor loves people. And he really looks at them... not just in their general direction, but he makes eye contact. He wants to know each and every one he sees. It's the strangest thing to observe, but after almost 10 years with him, I know for a fact that's what he's thinking. That and he's wondering if they have treats for him.

Unfortunately, Windsor got badly injured after his Third Level year, just as we were ready to move him up to Fourth Level. He severely pulled his right hind suspensory ligament to the point where there were bone fragments visible on the ultrasound. I was heartbroken to say the very least. He underwent surgery and stem cell injections and was kept in a stall for about 2 months, then small paddocks for another 8 months, with gradual increases in exercise under saddle. I guess the 7 months he spent in that paddock before I bought him did him some good, because he was a model patient. He stayed quiet and pleasant throughout the entire ordeal. When I was given the okay to walk him under saddle, I could tell he was bored with the routine of straight lines in the arena, so I taught him the Spanish Walk. He learned quickly, and still remembers it even though I don't ask for it often because I know he'll use it against me sometime in the show ring! 10 months after the injury, we got the okay to return to real work. It was a slow trip back to soundness, and he's probably not 100%, but he's at least 99.9% healed. That was 3 years ago, and we're back to Fourth Level now, hoping to do as well as we can this show year.



Laurel's Joy E.F.F., 2004 Shire/Arab cross

I purchased "Laurelai" in the fall of 2007 as an unstarted 3 year old from a breeder in Oregon. My husband and I made the 11 hour drive to pick her up one September morning, staying the night in a campground nearby, then driving to the breeder's friend's ranch to meet them for the first time. The breeder trailered her in, and turned her out in a large arena to let her run around a bit so I could see her in action before we loaded her up and took her home. While the breeder was pleased with her "Arabian" behavior, I was less so... but I could see potential when she lowered her tail and neck and looked more like her Shire half. She was sun burnt and barely groomed, but was a well-balanced, athletic mare.

So, we loaded her up and made the 1 hour drive home. I don't think she moved a foot the entire time.

The first year with Laurelai was spent doing groundwork - teaching her manners, grooming (I don't think she'd ever seen a set of clippers), lunging, long-lining, saddling, blanketing, etc... she had a lot to learn, and though she tended (and still does) to be untrusting, she was nearly always respectful. I put her under saddle at about 4 1/2 years. She was a quick learner, and I took her to her first schooling show after just a few months, where she scored 70% on her intro tests. I was pleased to say the least!

I also put her over some small fences in her early training, and I think she has a talent for jumping, but I am a dressage rider, so instead of messing up a raw talent, I left her jumping training alone. I'm hoping she'll prove her potential in that arena some day, but I won't be the one to take her there.

Laurelai has been the Region 3 Half/Anglo Arab First Level Dressage reserve champion for 2 years in a row, and has won numerous ribbons in her short show career (less than 3 years). She also has been a reliable trail horse, and I've begun working on Western Dressage with her. She really is multi-talented and athletic and I've learned more from her than just about any horse I've ever owned



Oxford Karma, 2010 Shire/Hanoverian-TB-Appy cross (with 2sday, his dam)

In 2008, I decided to breed my mare, 2sday (pronounced "Tuesday." she's a twin, thus the number "2" in her barn name). Because of the success I'd had so far with the Shire cross, I began searching for an appropriate Shire stud. Unfortunately, the stud I'd chosen was not particularly potent, and she was not a spring chicken (she was 12), she did not settle that year. But I just didn't want to give up, so the following spring we gave it one more shot with the same stud, this time shipping the semen to her rather than sending her to the breeding farm. Again, no success. It was getting later in the season, and I was getting worried about her age and her ability to settle at all. The breeder ended up gelding that stallion (no wonder), so my search for another stallion began again.

An internet search brought me to a list of Shire breeders, and going down that list I looked at each and every breeders' website that I could find. There weren't many at that time (not on the internet, anyway), so imagine my surprise when I came across Baroque Legacies Farm's photo albums, and happened across a photograph I had seen before. It was a picture of Windsor's sire, a photo I had received from Windsor's seller 7 years earlier. I was practically in tears when I saw that photo. Prince Zeatar had passed away by then, but the picture was on their website because he was also the sire of their stallion, Mainwaring's Tribute to Rufus. I'd found Windsor's half-brother, and he was a breeding stallion. I emailed them immediately, and within a few weeks, my mare was being a.i.'d by my vet. Unfortunately, she didn't take the first time, but short-cycling did the trick and she finally took. Actually, she took too well, and we had to pinch off a twin a month later, but that's okay. Her pregnancy was unremarkable, and her very first birth went smoothly and almost unnoticed. Oxford Karma, "Xeke," was born on July 17, 2010.

Shortly after weaning, Xeke was hanging out with Windsor in a paddock and when I went out to check on them, I noticed he was covered in mud (rainy season) and pawing at the gate. I knew immediately I had to get him to the vet. I loaded him and Windsor in the trailer, calling my vet from the road to alert them I was on my way. The hour drive seemed like an eternity. They tubed him but he was too small to do a rectal, and the sonogram was not remarkable - a slight distension, but when the dose of banamine they'd given him wasn't giving him much relief, they told me he'd need surgery. I barely hesitated when they told me the estimated cost (he wasn't insured yet), signed all the paperwork, and they took him to the operating room. I loaded Windsor, who was distraught that his baby was not coming home with him, and made the tearful drive home.

The wait for the call from the vet was excruciating, to say the least. But when it came, it was the best news you could expect in this situation. His small intestine had just folded over, causing the blockage. The best part was there was no necrotic tissue so they just had to unfold it, get the feed moving through again, and staple him back together. His days of recovery there were difficult because he was stressed from being in the hospital which caused gastric upset, but they upped his ulcer meds and that improved things just enough for him to come home. It was a long recovery process... 90 days in a stall for a growthy colt was NO fun. But he did recover fully. He had one more surgery about 6 months later, but this time it was brain surgery. That's a joke, of course... he was gelded.

Xeke has been such a joy these last 20 months, and is growing like a weed. He's already at least 16.1, so I'll be teaching him to stand quietly at the mounting block any day now! I won't start him until he's at least 4, but we're doing all sorts of ground work now. His favorite new thing is trotting over ground poles - he's up to 5 in a row and rarely even touches one! He's learning manners and patience, and LOVES to learn. I can tell he's going to be very much like his Uncle Windsor - flexible, athletic, friendly, and loving. I can't wait!

Our barncam / foalcam on the cheap!



We have our mares online with streaming video. This allows us to watch the mares from the house or work, allows the public to enjoy them, and also provides us with a wonderful group of people to help us out (extra eyes!).

I put together a system that works for us, and didn't cost an arm and a leg. We shoot wireless out to our barn, then run wired cameras from a computer out there. We only run video, no audio.

– Nanette Osterhoudt

Materials

- DSL [or other relatively fast] internet connection
- Modem
- Minimum of 9dBi Directional Antenna
- PC with at least a 40 GB hard drive, Pentium 4 processor and USB 2.0 - I'm using a Microsoft OS
- DVR card for computer, and software
- Dazzle DVR Recorder, and software
- Coax cable - I use RG-6
- CCTV cameras (I prefer having IR - infra-red- to see the horse in low-light conditions)
- Appropriate cable connectors (I need BNC and RCA - I prefer the solderless ones from RadioShack)
- Webcam hosting service (we use Mare Stare, LLC)

Note: There are many other, better ways this can be configured (such as wireless cameras or using a free hosting service such as Ustream). For around \$250 for everything above, except the monthly fee for webcam hosting, I'm very happy with our setup.

Replace the usual antenna on the modem with the directional antenna.



Place the antenna in a location facing the 'barn computer'.

I will eventually move my antenna to a shelf - but for now, this works.



At the other end, in the barn or near where your cams will be, hook up your computer. Here, I am using an old IBM NetVista (it has USB 2.0 - important). I got it for \$55 including shipping on eBay and it works just fine.

I don't do much on the barn computer other than check the cam, so I used whatever accessories I could find.

I did a clean install of XP Pro and Anti-virus software.



I use a USB wireless adapter so I can place it right in the window facing the house (and the directional antenna in there). It is about 250' and I get excellent signal strength in the barn.



Install the DVR card (again, off eBay) in one of the PC slots. This one has 4 connectors for camera cables, and 1 where I plug in the Dazzle (the red plug is for that cable). Take note of what style connectors you will need for the cables.

Install the software for the DVR card.



Install the Dazzle device. It plugs in to the computer via USB. Run a cable from the Dazzle to the DVR card. This uses 2 RCA connectors.

Install the software for the Dazzle.

Now, get your computer and software all running and your wireless connection working. Be sure you have all the Microsoft updates installed.



Run your cable from the computer to the approximate location for the first camera.

I purchased 500' of cable in order to eventually set up several cameras (eBay again), so I hooked the camera up and ran the cable with plenty extra at first. I installed the connector on the other end and hooked it up to the computer's DVR card.

For my cameras, I need RCA connectors for the camera end. I also need to plug the camera in to an electrical outlet. That's it.

Once you find the best location for the camera, secure the camera, and run the cable. Cut the computer end to length and redo the connector.

You will likely find an easier way to do this!



Now work with your webcam hosting service to go online. Mare Stare has excellent customer service. That is very important to me, because I needed it!

This is the view of our foaling stall from our house computer and everyone else's worldwide.



**We are proud of our
Shire All American Winners:**



Legacy's Image
Res. All-North American
Two Year Old Stallion



Hickory Hill Hannah
All-North American
Two Year Old Mare



Taylor's Agatha
Res. All-North American
Yield Mare

*Rising
Moose
Stables*

**Michael & Turie
Sorrell**

147 Fournier Road/ P.O. Box 107
Concord, VT 05824
(802) 695-2980
tsorrell@myfairpoint.net
www.risingmoosestables.net

**STRIVING TO
PRODUCE THE BEST**

IT'S SHOWTIME:
2011 SHOW RESULTS
ALL NORTH AMERICAN

STALLION - 3 YRS & OVER



All-North American: Gentle Giant Lincoln, Margaret Dube, Wimborne, AB



Res. All-North American: Huska Millennium Shire Commodore, Heinz & Ursina Naef, Rolling Hills Estates, CA
 3rd:Sladbrook Jubilee Spirit, Janet Long, Epsom, NH
 4th:Black Park Chancellor, Jenny Cournoyer, Jefferson, MA
 5th:Jenson's Poppi Knight, Al & Karen Myers, Ferrisburgh, VT
 6th:Illusion Farms Tuff Hedeman, Brett & Leanne Hoaglund, Glendive, MT
 7th:Loud Bridge Louis, Kent Wilson Jones, Lake Crystal, MN

TWO-YEAR-OLD STALLIONS



All-North American: Hickory Hill Nitro of the Northeast, Janet Long, Epsom, NH



Res. All-North American Legacy's Image, Turie Sorrell, Concord, VT
 3rd:Illusion Farms Last Tango, Bernard & Colene Stuttgart, Thorp, WI



All-North American:Howell Brothers Miller, Jeremy, Casey & Travis Howell, Blackfoot, ID



Res. All-North American: Echo Valley Lomaxx, Nancy & Brandley Fry, Steamboat Springs, CO
 3rd:Ox Kill Jose Alerico, Eugene & Vicky McCaffrey , Schoharie, NY
 4th:Illusion Farms Remember the Scots, Daniel & Kathleen Hathaway, Fryeburg, ME

STALLION FOALS



All-North American: Midnight Star's Golden Boy, Brit & Sharon McLin, New Castle, CO



Res. All-North American:Haugen-Hill Supreme Royalty , Danelle Kinney, Red Wing, MN
 3rd:Illusion Farms Remember the Fire, Daniel & Kathleen Hathaway, Fryeburg, ME
 4th:Northeast Hotshot, Sarah Cournoyer, Jefferson, MA
 5th:Tally Ho Duke's Cadence, Kimberly Parrington-Murchison, Rifle, CO

REGISTERED GELDINGS-ANY AGE



All-North American: Landcliffe Master, Arlin Wareing, Blackfoot, ID

REGISTERED GELDINGS-ANY AGE—Continued



Res. All-North American:Pace Farm Pat, Way ne Wareing, Blackfoot, ID
 3rd:Tally Ho Black Knight's Jester, Al & Karen Myers, Ferrisburgh, VT
 4th:Tally Ho BK's Tristan, Kim Parrington-Murchison, Rifle, CO
 5th:(tie)Lazy S Midnight Bob, Bernard Stuttgart, Thorp, WI
 5th:(tie)Tally Ho Titan, Kim Parrington-Murchison, Rifle, CO
 7th:Tally Ho BK's Triple Platinum, Kim Parrington-Murchison, Rifle, CO

BROOD MARES - 4 & OVER



All-North American:Gladwin Jubilee Reign, Kim Smith, Burlington, ON



Res. All-North American: Huska Millennium Shires Dawn Princess, Heinz Naef, Rolling Hills Estates, CA
 3rd:Jenson's Blackjack Jane, Danelle Kinney, Red Wing, MN
 4th:Cubley Zoe, Daniel & Kathleen Hathaway, Fryeburg, ME

YELD MARES - 4 & OVER



All-North American:Dua He Chi's Mercedes, Jeremy, Casey & Travis Howell, Blackfoot, ID

YELD MARES - 4 & OVER
Continued



Res. All-North American: Taylor's Agatha, Turie & Michael Sorrell, Concord, VT
 3rd:(tie)Shirley's Pride of the Scots, Daniel & Kathleen Hathaway, Fryeburg, ME
 3rd:(tie):Tayson Juliette, Michael & Turie Sorrell, Concord, VT
 5th:Skelton Sophie, Danelle Kinney, Red Wing, MN
 6th:Ox Kill Spectacular Dawn, Rosemary Mordasky, Stafford Springs, CT
 7th:Gladwin Glad, Gregg Trembath, Innisfail, AB

THREE-YEAR-OLD MARES



All-North American: Dua He Chi's Kia, Jeremy, Casey & Travis Howell, Blackfoot, ID



Res. All-North American: Illusion Farms Miss Congeniality, Daniel & Kathleen Hathaway, Fryeburg, ME
 3rd:Illusion Farms American Idol, Daniel & Kathleen Hathaway, Fryeburg, ME
 4th:Big Sky All That Jazz, Brett & Leanne Hoagland, Glendive, MT
 5th:Gentle Giant Mercedes, Blake & Fran Anderson, Didsbury , AB

TWO-YEAR-OLD MARES



All-North American: Hickory Hill Hannah, Turie & Michael Sorrell, Concord, VT

TWO-YEAR-OLD MARES

Continued



Res. All-North American: Squantum Samantha, Jenny Cournoyer, Jefferson, MA
 3rd: Illusion Farms Bittersweet, Daniel & Kathleen Hathaway, Fryeburg, ME
 4th: Haugen-Hill Courage Shiraz, Danelle Kinney, Red Wing, MN
 5th: Axeholme Corvallis, Chris & Nanette Osterhoudt, Colfax, WI
 6th: Jenson's Diplomat Destiny, Jenson Shires, Blair, NE
 7th: Cedar Hill Lady Sedaris, Stacey Golub, East Hampton, CT

YEARLING MARES



All-North American: Gentle Giant Moxie, Blake & Fran Anderson, Didsbury, AB



Res. All-North American: Squantum Stella, Jenny Cournoyer, Jefferson, MA
 3rd: RM's Holly Goes Lightly, Jeffrey & Charity O'Dell, Lowville, NY
 4th: Summer Rain's Easter Lily, Michelle Simona, Silt, CO
 5th: Jenson's Diplomat Special, Jenson Shires, Blair, NE

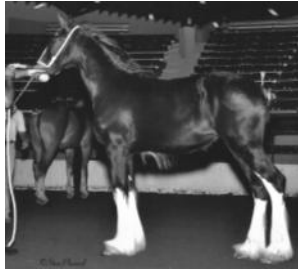
FILLY FOALS



All-North American: Illusion Farms Remember the Lyrics, Daniel & Kathleen Hathaway, Fryeburg, ME

FILLY FOALS

Continued



Res. All-North American: Westwind Grand Emily, Kim Smith, Burlington, ON
 3rd: (tie) Tally Ho Duke's Corrie, Kim Parrington-Murchison, Rifle, CO
 3rd: (tie) Ox Kill Queen of the May, Eugene & Vicky McCaffre, Schoharie, NY

Statement of Position on Animal Care*

The American Shire Horse Association encourages Shire owners to:

- Provide a high standard of livestock health;
- Manage livestock in a humane manner;
- Use and maintain transportation and handling facilities that provide livestock health and safety;
- Provide feed and water to maintain livestock health and productivity;
- Consult with a licensed veterinarian concerning animal health care practices;
- Use approved livestock health products according to label directions;
- Sustain and conserve natural resources by proper management of land, air, water and wildlife;
- Support and maintain rural and family traditions important to our society.

*Resource: National Pedigreed Livestock Council (text provided by member Sharon McLin)



2012 Stallion Reports

It is that time of year again when we plan for our 2013 foal crop.

Please submit your stallion reports by November 30th!!

All stallions and owners will receive a free breeder's listing in the Winter Bulletin for participating!



SAC Program Rate Change for 2012

Shire and Shire Sport Horse Nomination
NOW \$ 15 Per Horse

Information can be found at:
www.shirehorse.org—under the shows tab

~ All ASHA Regional/ National Performance Classes to count for points.

INTERNAL PARASITES: STRATEGIES FOR EFFECTIVE PARASITE CONTROL -

A Bayer Animal Health Brochure (updated January 2010)

Internal parasites, or worms, are silent thieves and killers. They can cause extensive internal damage without you even realizing your animals are heavily infected. The effects of internal parasites on a horse range from a dull haircoat and unthriftiness to colic and death. Internal parasites lower the horse's resistance to infection, rob the horse of valuable nutrients, and in some cases, cause permanent damage to the internal organs.

In terms of management priorities, establishing an effective parasite control program is probably second only to supplying the horse with clean, plentiful water and high-quality feed. It's that important!

TYPES OF INTERNAL PARASITES

There are more than 150 species of internal parasites that can infect horses. The most common and troublesome are the following:

Large strongyles (bloodworms or redworms)

Small strongyles

Roundworms (ascarids)

Tapeworms

Lungworms

Pinworms

Bots

Threadworms

Probably the most important, in terms of health risk, are the first four: large and small strongyles, roundworms and tapeworms.

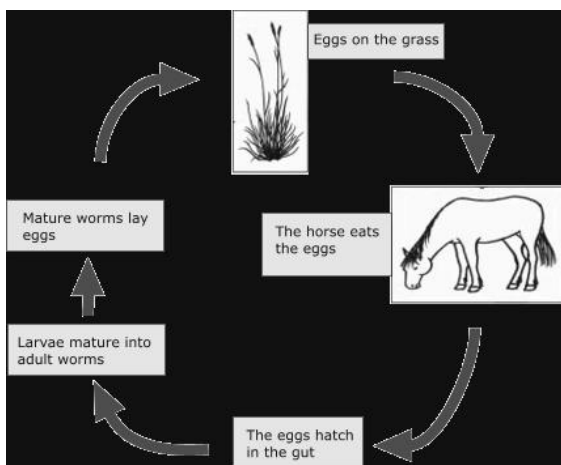
The lifecycle of most internal parasites involves eggs, larvae (immature worms), and adults (mature worms). Eggs or larvae are deposited onto the ground in the manure of an infected horse. They are swallowed while the horse is grazing, and the larvae mature into adults within the horse's digestive tract (stomach or intestines). With some species of parasite, the larvae migrate out of the intestine, into other tissues or organs, before returning to the intestine and maturing into egg-laying adults.

Large strongyles, as larvae, penetrate the lining of the bowel and migrate along the blood vessels that supply the intestines. Even small numbers of these larvae can cause extensive damage and possibly death. Infection with large strongyles can cause unthriftiness, weight loss, poor growth in young horses, anemia (low numbers of red blood cells) and colic. In most cases, colic caused by these parasites is relatively mild, but severe infections can result in loss of blood supply to a portion of the intestine, leading to severe and potentially fatal colic. Fortunately, large strongyles can be effectively controlled by most available dewormers for horses.

Small strongyles have become a group of major importance. Unlike the large strongyles, small strongyle larvae do not penetrate the intestinal wall or migrate through the tissues. Instead, they burrow into the lining of the intestine and remain dormant, or "encysted" (enclosed in a cyst-like structure), for several months before completing their life cycle. During this time, the larvae are resistant to most dewormers.

Small strongyle larvae can cause severe damage to the lining of

the intestine, especially when large numbers of larvae emerge from the encysted stage all at once. Adult small strongyle females are very prolific and their eggs comprise over 95 percent of those found in



fecal egg counts of horses. Colic and diarrhea are common in heavily infected horses. These parasites also cause weight loss, slowed growth in young horses, poor coat condition and lethargy or lack of energy. While lighter infections are not obvious, it is common for a horse's general health and performance to improve after treatment for these parasites.

The early and late larval stages (before and after they burrow into the lining of the intestine) and the adult parasites are susceptible to several dewormers. But currently there are only two types of dewormer that are effective against the encysted larval stage—the stage that causes the most damage. Strategic use of these products is called larvicidal therapy, as it is targeted at the encysted larvae. Ask your veterinarian which products are currently most effective.

Roundworms

Roundworms, or ascarids, are most often a problem in young horses (especially foals, weanlings and yearlings). Adult roundworms are several inches long and almost the width of a pencil; in large numbers they can cause blockage (or impaction) of the intestine. In addition, roundworm larvae migrate through the internal organs until they reach the lungs. They are then coughed up and swallowed back into the digestive tract to complete their life cycle. Large infections can lead to damage to the liver or lungs due to migration of these larval forms. Expectant mares should be dewormed 30 days before foaling and/or at foaling to reduce the new foal's exposure to these parasites.

Roundworm infection in young horses can cause coughing, poor body condition and growth, rough coat, pot belly and colic. Colic is most likely in older foals (over 3 months of age) that are heavily parasitized with roundworms when dewormed for the first time. By this stage, the roundworms can have matured into adults that could cause an impaction. In this situation, it is a good idea to have your veterinarian deworm the foal or recommend a deworming plan for the foal. Resistance to many of the dewormers has become a big problem in controlling ascarid infections in foals over the past 8 years.

Tapeworms

Until recently, tapeworms weren't considered to be a significant problem in horses. We now know that tapeworms can cause colic, ranging from mild cramping to severe colic that requires surgical treatment. The tapeworm life cycle involves a tiny pasture mite as an intermediate host, and horses are at a risk of developing tapeworm infection when they eat this mite in the grass, hay or grain.

Until recently, no equine dewormer was approved for use against tapeworms. Praziquantel has been demonstrated to be highly effective against tapeworms. Several pharmaceutical companies have developed combination products that offer a complete antiparasitic spectrum of activity. Horses should be dewormed for tapeworms annually. Consult your veterinarian for advice on the best product to use for your situation.

Lungworms cause chronic coughing in horses, ponies, and mules. Donkeys are the natural host of this parasite, so typically they don't show any obvious signs of infection.

Pinworms lay their eggs on the skin around the horse's anus. The irritation they cause makes the horse repeatedly rub his tail.

Threadworms are mostly a problem in young foals, in which they can cause diarrhea.

Bots don't usually cause major health problems, although they can damage the lining of the stomach where they attach. Since ivermectin has become such an easy deworming medication to obtain, bots are rarely found in properly dewormed horses. They may also cause small areas of ulceration in the mouth, where the larvae burrow into the tissues for a time after the eggs are taken into the mouth.

SIGNS OF PARASITISM

Contrary to popular belief, horses can have potentially dangerous numbers of internal parasites while still appearing to be relatively healthy. But in some individuals, especially young horses, parasites can take a visible toll. Common signs of parasitism include the following:

- Dull, rough haircoat
- Lethargy (decreased energy) or depression
- Decreased stamina
- Unthriftiness or loss of condition
- Slowed growth in young horses
- Pot belly (especially in young horses)
- Colic
- Diarrhea



FECAL EGG COUNTS

One of the most useful tools in a parasite control program is the fecal egg count—microscopic examination of fresh manure for parasite eggs. This simple test allows the veterinarian to determine which parasites are present and whether the infection is light, moderate, or heavy. This information is important in developing a deworming program for your horse or farm, and in monitoring the effectiveness of the program.

Fecal egg count involves collecting two or three fresh manure balls from the horse to be tested and sending the manure sample to a veterinary laboratory. Results are expressed as eggs per gram (epg) of manure. A fecal egg count of less than 200 epg suggests a light parasite load. Horses with high fecal egg counts of 500-1000 epg suggest the interval between deworming is too long.

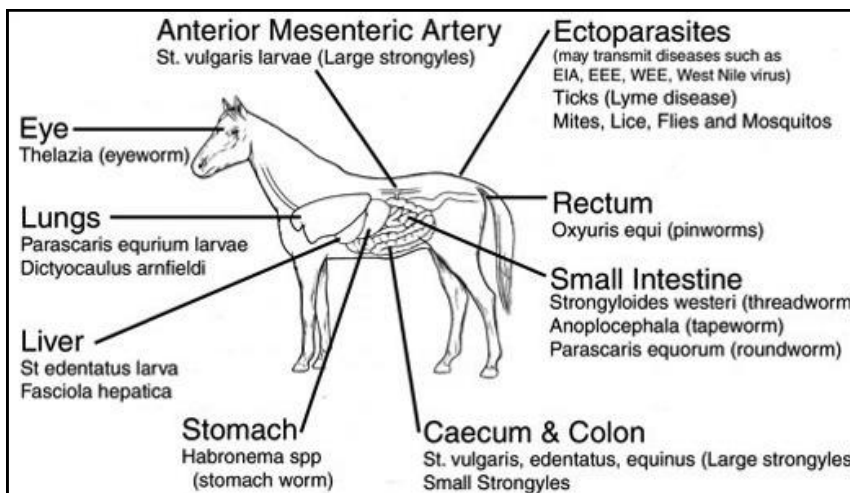
It is important to note that a negative fecal examination does not mean the horse is free of internal parasites. Some types of parasites produce eggs only intermittently. Larvae do not produce eggs at all, and may be present in large numbers in a horse with a fecal egg count of zero. And tapeworm eggs may be missed with routine fecal egg count techniques. The results are most useful when several horses on a farm are tested on the same day. This information gives the veterinarian and farm manager a good idea of the level of parasitism on the property.

DEWORMERS

There are several different dewormers, or anthelmintics, currently available. Most are broad-spectrum, meaning that they are effective against several different types of parasites. It is generally best to use a broad-spectrum dewormer as the basis of your deworming program. If a specific problem is identified, such as tapeworms or encysted small strongyles, a more specific dewormer can be used.

No deworming product is 100 percent effective in ridding every horse of all internal parasites. However, it is not necessary for a product to kill every worm in order to improve the horse's health, minimize the risk of serious disease, improve feed efficiency, and reduce pasture contamination with parasite eggs and larvae.

Daily dewormers can be worthwhile in grazing horses. With these products, a small quantity of dewormer is fed to the horse each day, usually in a small amount of feed. They effectively prevent new infections by larvae picked up during grazing. But they may not resolve existing infections and they do not kill bots, so they should not be relied upon as the sole method of parasite control. Since the use of the level of drug given each day only prevents infection, it is important to remove existing infections with an effective purge dewormer prior to beginning daily treatment.



Pictured left is Bot Fly Larva.

The various deworming compounds each have benefits against different parasites as well as a defined period of time for which they are effective. It is a good idea to have your veterinarian help you determine the best deworming interval for your horse. Fecal egg counts can be very useful in this regard, as well as in evaluating the effectiveness of the product you are using.

Methods of Administration

There are three main ways of administering dewormers:

Oral paste syringe

Feed additive (powder, liquid, or pellets)

Nasogastric (stomach) tube

All three methods are effective, provided the proper dose is given at the right time, and the horse receives the full dose. The dose must be calculated based on the horse's body weight. Weight tapes are an accurate enough way of estimating a horse's body weight for this purpose. Deworming pastes and feed additives are convenient and easy to administer. However, some horses find them unpalatable and spit them out or refuse to eat them. So be sure that all of the dose you've given is actually consumed by the horse.

Tube deworming is a highly effective means of ensuring that the horse receives the proper dose because the dewormer is delivered directly into the horse's stomach. However, with the range of dewormers now available, it is seldom necessary for a veterinarian to deworm a horse by this method.

DESIGNING A DEWORMING PROGRAM

There are two basic types of deworming programs:

Continuous— feeding a daily dewormer year-round or throughout the grazing season

Strategic— deworming only at certain times of the year or when fecal egg counts rise

Combination programs can also be used. For example, continuous deworming can be supplemented with strategic deworming for bots.

There is no single deworming program that suits all horses and all situations. The ideal program for your horse(s) depends on the type, number and ages of the horses on your farm, pasture management and your geographic location. It is best to have your regular veterinarian help you devise an appropriate deworming program for your horse or farm.

Monitoring
Having your veterinarian perform fecal egg counts to determine the amount of egg shedding that your horse has is important. This information will help ensure that the dewormers that are being used are effective and also help determine the frequency of deworming necessary to keep your horse healthy. The outlay of time and money will be well worth it.

A COMPLETE MANAGEMENT PROGRAM

Chemical control using dewormers is just one part of a complete parasite control plan. As parasites are primarily transferred through manure, good management is essential:

Keep the number of horses per acre to a minimum to prevent overgrazing and reduce pasture contamination with parasite eggs and larvae.

Pick up and dispose of manure regularly (at least twice a week, even in dirt or sand yards)

Do not spread manure on fields to be grazed by horses; instead, compost it in a pile away from the pasture.

Mow and harrow pastures periodically to break up manure piles and expose parasite larvae to the elements (larvae can survive freezing, but they cannot tolerate extreme heat and drying for very long).

Consider rotating pastures by allowing sheep or cattle to graze them, thereby interrupting the life cycles of equine parasites. Keep foals and weanlings separate from yearlings and older horses to minimize the foals' exposure to ascarids and other parasites. Use a feeder for hay and grain rather than feeding on the ground. Remove bot eggs regularly from the horse's haircoat (flea combs work well in some instances).

Consult your veterinarian to set up an effective deworming program for your horse(s) and monitor its effectiveness.

For more information, contact your veterinarian.

American Association of Equine Practitioners
4075 Iron Works Parkway, Lexington, KY 40511
(859) 233-0147



American Shire Horse Association

Myrna Rhinehart Secretary

American Shire Horse Association

P.O. Box 408 ~ Lake Delton, WI 53940

Phone: 888-302-6643

email: secretary@shirehorse.org

www.shirehorse.org

Photo Release Form For Photos Submitted to ASHA By Member

All images © _____ (member name), All Rights Reserved. This Use License shall be governed by the laws of the State of _____. I _____ (member name), as copyright owner of these images, grant a lifetime, personal, non-commercial use license to **American Shire Horse Association**, its Secretary, and Board of Directors, to print or have printed reproductions of these images for the use of press releases, bulletin publications, newsletter or used by other publications who request photos for their use. I understand that these images may or may not be altered in order to be published. Under no circumstances will professional water marks or signatures be removed. NO PROOF or Professional Images allowed without signature of the photographer who took the image (See additional release below for these photos).

Online Use: I _____ (member name) have provided web sized and watermarked images for exclusive use on social networking web sites that are not owned by **American Shire Horse Association**, its Secretary, and Board of Directors. As well as use on the ASHA web site. No other online use is granted.

Member Signature: _____ Date: _____

Copyright Information For Professional Photos

If you are submitting Professional Photos—Please have the Photographer or Studio fill out the section below.

Commercial use of the images is prohibited.

The Photographer hereby warrants that he (or she) is the sole creator of these images and owns all rights granted by law. All images © _____ (Photographer or Studio), All Rights Reserved. This Use License shall be governed by the laws of the State of _____. I _____ (Photographer or Studio), as copyright owner of these images, grant a lifetime, personal, non-commercial use license to **American Shire Horse Association**, its Secretary, and Board of Directors, to print or have printed reproductions of these images for the use of press releases, bulletin publications, newsletter or used by other publications who request photos for their use. I understand that these images may or may not be altered in order to be published. Under no circumstances will professional water marks or signatures be removed. NO PROOF or Professional Images allowed without signature of the photographer who took the image.

Online Use : I _____ (Photographer or Studio) have provided web sized and watermarked images for exclusive use on social networking web sites that are not owned by **American Shire Horse Association**, its Secretary, and Board of Directors. As well as use on the ASHA web site. No other online use is granted.

Professional Photographer Signature: _____ Date: _____

Address: _____ Phone: _____

Member Name: _____ Member # _____

Address _____

City, State _____

Phone: _____

Email: _____

Pictures Submitted: _____

Thank You to All Who Attended 2012 Annual Meeting and Education Day

Your input was appreciated and needed!

Draft Minutes with Appendices Are Done
Hardcopies of minutes are printed at the end of this Bulletin
Appendices, Motion Summaries, and Action Points may be viewed online.

Currently Available Online:

ASHA website

www.shirehorse.org

Members Only: Meeting Minutes
2012 Annual Members' and Board Meetings



Looking forward to 2013 and the November Election!! Great things to come.

BREEDERS LISTINGS:

-Looking for a Shire-

Contact one of our Breeders

Midnight Star Breeders**Brit and Sharon McLin**

P.O. Box 957 Silt, CO 81652

(970) 876-5979

msbshire@sopris.net

Breeding Quality Shires Since 1978

Northeast Shires**Standing 3 Stallions**

Embryo & Semen

collect and preserve

ShireHorse.com

603-930-6975

Gentle Giant Shires**Blake and Fran Amderson**

R. R. 2; Didsbury, AB T0M 0W0 Canada

Phone: (403) 335-9609 Fax: (403) 335-8773

Email: shires@telus.net*Shires with size, substance & style.***Retired Taxpayers Lose Tax Court Case
By John Alan Cohan, Attorney at Law**

The Tax Court held that a married couple who engaged in a cattle and horse breeding activity were not engaged in a business, despite the full-time nature of the venture.

The case was *Garbini v. Commissioner IRS* [T.C. Summary Opinion 2004-7]. Mr. Garbini, of Myrtle Creek, Oregon, listed his occupation as a rancher, and his wife indicated she was a housewife. Both taxpayers were retired during the two taxable years in issue, and for Mr. Garbini this was a full time venture. They had a net loss of \$127,341 in one year, and \$124,584 for a second year at issue. The court examined whether the taxpayers carried on the activity with the actual and honest objective of making a profit. Although a reasonable expectation of profit is not required, the facts and circumstances must indicate that the taxpayer entered into the activity, or continued the activity, with the actual and honest objective of making a profit.

The court said that the taxpayers did not seek expert advice before entering the activity, and that was viewed with disfavor. They had no business plan to prove that their activity originated with the honest objective of making a profit. No single factor is controlling in deciding whether a horse or cattle venture is engaged in for profit. In applying the factors to determine profit objective, the court focused on the manner in which Mr. Garbini carried on the activity. The fact that the taxpayer carries on the activity in a business-like manner and maintains complete and accurate books and records indicates that the activity is engaged in for profit. In this case, the court said that there was little by way of books and records. Rather, Mr. Garbini made a monthly list of expense categories and, based on his canceled checks, recorded the amounts expended for each category.

At trial, Mr. Garbini submitted various invoices, canceled checks, and the monthly lists for the taxable years in issue. The court said that he did not keep the type of records which could be used to increase the profitability of a business. He never prepared budgets or market projections which would outline strategies for ensuring a profitable business venture. The court said that his recordkeeping practice of creating monthly lists from canceled checks simply was inadequate and not indicative of a prudent and reasonable person in business. Mr. Garbini said that he made efforts to reduce expenses in order to operate the ranch in a profitable manner. Nothing in the record indicated what efforts he actually made to reduce expenses. Mr. Garbini never ascertained how or when he would make a profit or how he could change his operating methods to improve his profitability. Mr. Garbini worked on the ranch almost every day and employed one full-time ranch hand, who performed general maintenance of the property and barns. Mr. Garbini occasionally hired outside temporary labor.

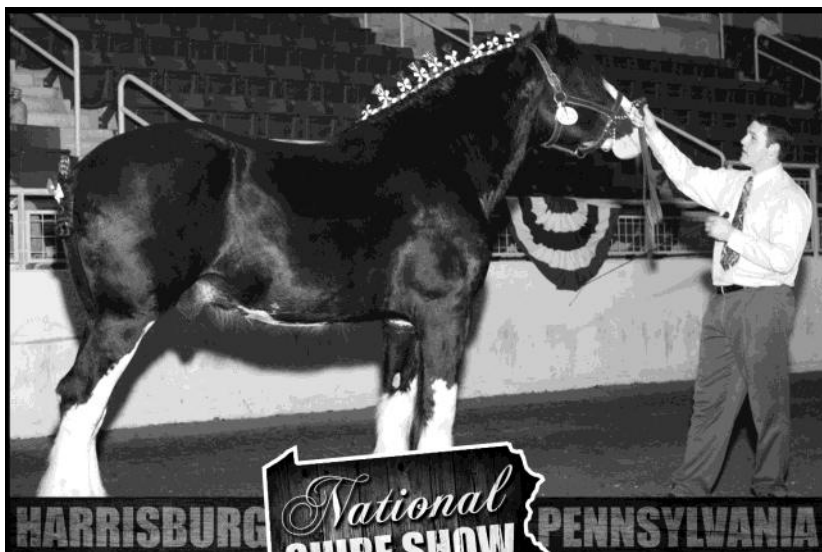
There were no sales during the years at issue. One strength in this case that unfortunately was not set forth adequately in the evidence was that according to Mr. Garbini the ranch had increased in value as a result of improvements he had made. Mr. Garbini testified that he bought the property for \$566,000 in its undeveloped condition, and its value at the time of trial was \$15 million. However, he did not provide any evidence other than his verbal testimony. In order to prove this, there must be introduced into evidence an expert's report showing the appreciation in value, but in all the court had was the taxpayer's testimony.

Mr. Garbini also argued that part of the ranch activity involved planting and harvesting trees. He stated that he had planted 3,000 to 5,000 trees per year, and that they are suitable for harvesting after 7 years. The court noted that no trees were harvested during the taxable years in issue. The court also considered the history of income or losses with respect to the activity. Mr. Garbini did not provide a history of income or losses for the activity. During the taxable years in issue, losses exceeded \$250,000, an average of \$125,000 for each year. Mr. Garbini claimed that the losses have gradually declined, but this was not adequately presented. Over a period of about 12 years, the losses were losses over \$1,500,000. There was no evidence of any profit year. The court considered the financial status of the taxpayers. The court noted that as a result of their other income, the taxpayers realized substantial tax benefits from the approximate \$125,000 loss deduction for each taxable year in issue.

The court also said that there were elements of personal pleasure or recreation even though they did not ride the horses. The court simply said that the taxpayers probably had personal pleasure from residing on a large ranch. Taking the record as a whole, the court concluded that the taxpayers did not possess the actual and honest objective of making a profit from their operations. Because they had no gross income for the taxable years in issue, none of their claimed expenses were deductible.



[John Alan Cohan is a lawyer who has worked in the horse, livestock and farming industries since 1981. He serves clients in all 50 states, and can be reached by telephone at (310) 278-0203 or via e-mail at johnalancohan@aol.com, or visit his web site at www.JohnAlanCohan.com.]



National SHIRE SHOW

HARRISBURG PENNSYLVANIA

KEYSTONE INTERNATIONAL LIVESTOCK EXPOSITION October 4, 5 & 6, 2012

- ▶ AA Level - All North American
- ▶ New Expanded Premiums
- ▶ New Hospitality Services For Exhibitors
- ▶ Double Premier Points
- ▶ New Show Schedule & Classes
- ▶ Judge - Mark Barie, East Bethany, NY
- ▶ Cart, Hitch & Saddle Classes

Show Coordinator: Karla Stoner | (301) 874-3250 | bloomforge@peoplepc.com
www.shirehorse.org/Shows | www.keystoneinternational.state.pa.us

American Shire Horse Association | Myrna Rhinehart - Secretary | PO Box 408, Lake Delton, WI 53940 | secretary@shirehorse.org | www.shirehorse.org

THE AMERICAN SHIRE HORSE ASSOCIATION



ASHA REGIONAL SHOWS

Ohio State Fair
COLUMBUS, OH | AUGUST 2 & 3, 2012

Colorado Draft Horse Classic
RIFLE, CO | AUGUST 5, 2012

Addison County Fair & Field Days
MIDDLEBURY, VT | AUGUST 10 & 11, 2012

Maine State Fair
SKOWHEGAN, ME | AUGUST 17, 2012

New York State Fair
SYRACUSE, NY | AUGUST 28 - SEPTEMBER 3, 2012

Colorado State Fair
PUEBLO, CO | AUGUST 30 & 31, 2012

Central Wisconsin State Fair
MARSHFIELD, WI | AUGUST 31 - SEPTEMBER 3, 2012

International Draft Horse, Mule & Pleasure Driving Show
POMONA, CA | SEPTEMBER 26 & 30, 2012

High Horse Design Solutions

\$\$ 2012 National Show Travel Funds \$\$

A member has contributed \$500 to help defray travel expenses for exhibitors traveling 500 miles or more to the National and is offering to match other contributions up to another \$500. If you would like to help support exhibitors going to this show, please consider contributing to this fund. Your contributions will be matched up to \$500. More details will be in the Summer Members' Bulletin.

If you would like to contribute, call the office to make a contribution by credit card, or send a check payable to ASHA with '2012 National Show travel fund' noted in the memo section.
Office phone: 888-302-6643, Address: ASHA, P.O. Box 408, Lake Delton, WI 53940

Our sincere appreciation to Janet Long for making this generous contribution and matching offer.

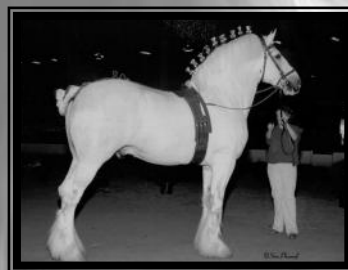
Thank You!!

The Show Committee



Ox Kill Farm Shires

Proudly Presents

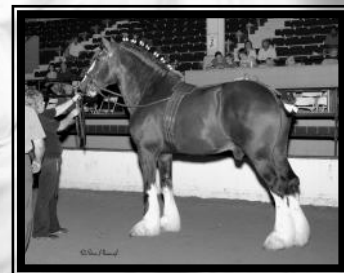


Metheringham Upton Isaac

~ Substance ~ Style ~ Size ~
~ Soundness ~ Sense ~
~ Multiple Champion ~
He stands 19.1 Hands
Produces Black, Grey & Bay

Leapley Deighton Cardinal

Winner of the coveted
King George Cup at the
Peterborough show in
England.



If you have any questions about Ox Kill Farm, our horses, or Shire horses in general please contact us...

Gene & Vicky McCaffrey

267 Sholtes Road * Schoharie, NY 12157
(518) 872-1295 * oxkill@capital.net * www.shirehorse.net

Quarterly Registrations: Dec. 31, 2011 to April 1, 2012

Remember to check your documents for errors upon receipt from the Secretary.

The information here is from the database at the office..

"BK'S AMAZING GRACE OF SHADY GROVE - 24636-M"

"Mare; Black. White blaze from mid-forehead, narrows and runs to right side; ends near right nostril. Left foreleg white stocking from above knee in front, to mid-forearm behind, point up medially, slopes down to knee in front. Right foreleg white stocking from above knee in front, downward point of black laterally, to above knee in back. Left and right hind legs white stockings just above hock joints, sloping to below point of hocks in back. White finger-size spots mid-belly on right side and midline of belly. Foaled April 2, 2011; Bred and owned by CYNTHIA L. TEMAAT, Spearville, KS; Sire DEIGHTON BLACK KNIGHT 22703-S; Dam JENSON'S EQUALIZER JILL 23225-M."

"BRIGHTENRIDGE CINCO'S PROMISE - 24635-M"

"Mare; Black. Narrow white stripe from center of forehead, narrowing to point three-quarters down face; white snip from point between nostrils over lips and chin; whorl between eyes. Left foreleg white stocking from just below knee; white hoof. Right foreleg white stocking from mid-cannon; white hoof. Left hind leg black. Right hind leg white stocking from just below hock; white hoof. Foaled May 19, 2011; Bred and owned by TONY L. BOWERS, Sparta, WI; Sire FOREST HILLS BREMER 22759-S; Dam BRIGHTENRIDGE TATTONS CINCO 23458-M."

"CLAY COUNTRY'S COURAGE ADDISON - 24631-M"

"Mare; Black. White blaze from mid-forehead extending between eyes to inside edge of both nostrils, extending over upper and lower lips and chin. Left and right forelegs white stockings to knees. Left hind leg white stocking to below hock behind, to above hock joint in front. Right hind leg white stocking to hock. Small white patch on center of belly just in front of navel. Foaled April 18, 2009; Bred and owned by AL and KAREN MYERS, Ferrisburgh, VT; Sire TREMOELGOCH COURAGE (46903) 23234-S; Dam DEER FLAT ADA LAMB 23547-M."

"DANIHER TITANIC LOVELY LACE (3/4-SHIRE) - A-24629-M"

"Mare; Gray. Irregular star, race and connected snip, small amount of white on lower lip. Left and right forelegs no white markings. Left and right hind legs full white stockings with white extending above hocks in front.. Small white patch on belly at girth; two white spots near udder. Foaled April 23, 2011; Bred and owned by BRENDA J. DANIHER, La Junta, CO; Sire FOX VALLEY TITAN 22439-S; Dam LIL LIZA (1/2 - SHIRE) GR-197."

"GLORY TO GOD'S AMAZING GRACE - 24639-M"

"Mare; Black. Wide blaze starting in center of forehead, near eyes, extending down over muzzle, nostrils, lips and chin. Left foreleg white stocking above knee. Right foreleg white stocking above knee, higher than left front. Left hind leg white stocking above hock to gaskin on outside. Right hind leg white stocking extending over hip and point of hip. Two white spots on left barrel, and two larger spots on right barrel. Foaled April 11, 2010; Bred and owned by AARON WEIZENEGGER, Coon Rapids, MN; Sire DEIGHTON ROYAL DIPLOMAT (46942) 22831-S; Dam JENSON'S JACOB TIPPER 24204-M."

"GYPSY LANE IDA BELLA - 24634-M"

"Mare; Black. Wide white blaze from upper forehead, tapers below eye level and veers left of center, stays between nostrils over muzzle to lips and chin; whorl between eyes. Left and right forelegs white stockings to below knees in front, to above knees in back. Left and right hind legs white stockings to below hocks in rear, tapering up in front to gaskins. Small white belly spot to rear of abdomen on left side. Foaled May 10, 2011; Bred and owned by AL-LAN J. and SHARON JUSTIN, St. Charles, MN; Sire FOREST HILLS BREMER 22759-S; Dam BRIGHTENRIDGE BAILEY'S GYPSY 23812-M."

"HICKORY HILL ADELLE - 24627-M"

"Mare; Black. White star conjoined with narrow stripe and snip over nose and upper lip, wider between eyes. Left foreleg white sock to mid-cannon. Right foreleg white sock on outside of leg reducing to short sock on inside. Left hind leg white stocking from hock. Right hind leg no markings. Foaled April 18, 2011; Bred and owned by ROBERT TAYLOR II, Owego, NY; Sire ISLES FIELD DANNY BOY (46916) 23001-S; Dam NORTHEAST ARISTOCRAT'S ABBIGAIL 23938-M."

"HICKORY HILL SYBIL - 24626-M"

"Mare; Black. Broad blaze touches both eyes, extends down nasal ridge over both nostrils and muzzle, back up under jaw halfway to throat latch; small dot on forehead near left ear. Left and right forelegs full white stockings from above knees. Left and right hind legs white stockings from just above hocks behind to upper gaskins. White oval near right flank; two white spots with points up in girth area on right side; large white spot with two points upward on left belly area. Foaled June 10, 2011; Bred and owned by ROBERT TAYLOR II, Owego, NY; Sire ISLES FIELD DANNY BOY (46916) 23001-S; Dam MONTAGUES LONG TALL SALLY (147157) 24055-M."

"HIGH MEADOW HADDIE - 24628-M"

"Mare; Black. Full white blaze covers both nostrils and lower lip; black spot on muzzle. Left and right forelegs white stockings to above knees. Left and right hind legs white stockings from stifles in front to below hocks in rear. White spot near point of left hip; larger white marking on right hip; sabino white spots right girth area; white belly splash extends higher on left belly side. Foaled April 2, 2008; Bred and owned by W. E. JULIEN, Omaha, NE; Sire BURNHAM GREEN ALFIE (46926); Dam JENSON'S LAD QUEEN 23906-M."

"NORTH COUNTRY'S KATRINA'S APRIL STORM - 24638-M"

"Mare; Black. White blaze starts above eyes, extends down to right nostril. White on front of lower lip. Left foreleg white sock to just below knee, higher in front and back. Right foreleg black. Left hind leg white sock to just below hock, lower in back. Right hind leg white sock to just below hock, lower in back. No other markings. Foaled April 4, 2011; Bred and owned by TERRY MICKOLS and ROBERT NUNES, Stoneham, ME; Sire ILLUSION FARMS REMEMBER THE TITAN 23167-S; Dam BRIGADOON SILVER LACE 23559-M."

"REDBUD'S RUNAWAY MAATRIX - 24632-M"

"Mare; Gray. White blaze pointed at top with points above eyes, touching nostrils, extending over upper lip; narrower mid-face. Left and right forelegs white stockings to knees. Left and right hind legs white stockings from front of hocks to below hocks in back. Foaled May 5, 2011; Bred by ERIC and MARIBETH SCOTT, Merced, CA Owned by HEATHER & T. J. STEED, Stephenville, TX; Sire ILLUSION CRYSTAL CLEAR OF OX KILL 22681-S; Dam TALLY HO BK'S LADY APRIL 23889-M." **Page 27**

"RICE CREEK SCARLETT - 24637-M"

"Mare; Black. White blaze narrow at the forehead, widening to over entire lower face including nostrils, upper and lower lips, and chin. Left foreleg white to above knee, lower in front. Right foreleg white to above knee. Left hind leg white to above hock. Right hind leg white to above hock. Two white splotches on barrel. Foaled May 9, 2011; Bred and owned by DANIEL A. HUBBELL, Traverse City, MI; Sire HUSKA MILLENNIUM SHIRES CRESCENT MOON 22869-S; Dam STAR-KNIGHT CYBILL 23195-M."

"RIVER VALLEY'S MADAM SOPHIA - 24633-M"

"Mare; Black. White spot above left eye; white blaze wide at muzzle tapers to point between left eye and center of forehead. Left foreleg white stocking to below knee. Right foreleg white stocking to middle of knee. Left hind leg white stocking to above hock. Right hind leg white stocking to point of hock in rear, in front white hock joint and extending 12 inches above hock. White belly spot 3 inches wide by 6 inches long in front of udder. Whorls center of forehead, left side of neck. Foaled April 9, 2010; Bred and owned by HOBERT O. SKAGGS, Franklin, IN; Sire BLACK WALNUT PRINCE WILLIAM 23114-S; Dam BLACK WALNUT PRINCESS NICOLE 24294-M."

"ROYAL KNIGHT'S SENSATIONAL KATE - 24624-M"

"Mare; Black. Wide blaze upper forehead, wider over top of right eye and into left eye, then tapering inward below eyes, down center of face, widening to include left nostril and inside of right nostril, down to lower lip; black spot upper lip between nostrils. Left foreleg white spot at fetlock into feather. Right foreleg white to knee in front, higher behind. Left and right hind legs white to below hocks behind, to above in front. White spot center of under-belly. Foaled May 4, 2011; Bred and owned by GERYL and MELISSA WADE, Bedford, VA; Sire ROYAL VIEW SENSATIONAL THOMAS 23175-S; Dam DUKE'S LADY ELIZABETH 23986-M."

"ROYAL KNIGHT'S SENSATIONAL MELODY - 24625-M"

"Mare; Black. Medium irregular blaze upper forehead extending wide out over left eye, tapering sharply to center of face just below eyes, extending down just touching inside of left nostril and extending to lower lip. Left foreleg white to fetlock behind, to knee in front. Right foreleg white to knee in front, higher in back. Left and right hind legs white to hocks behind, slightly higher in front. Foaled May 7, 2011; Bred and owned by MELISSA WADE, Bedford, VA; Sire ROYAL VIEW SENSATIONAL THOMAS 23175-S; Dam EATON ACRES MASTERMIND'S APRIL MAGIC 24176-M."

"SPENCE FARMS VELVET IMPRESSION - 24630-M"

"Mare; Black. Full white blaze between eyes, narrower near left eye, extends from forehead over nose and upper lip between nostrils; black spot center-left upper lip. Left foreleg white stocking to just below knee, shorter on inside; white hoof. Right foreleg white pastern in front, no marking in back; white hoof. Left hind leg white stocking angled from front of hock to mid-cannon in back. Right hind leg white stocking angled from gaskin front to just below hock in back. Slight roaning on body, Foaled May 16, 2011; Bred and owned by JEAN SPENCE, Moundville, AL; Sire FOX VALLEY KING MAGNUS (C.608) 23038-S; Dam RM'S LASTING IMPRESSION 24333-M."

"DUA HE CHI'S KING EDWARD - 23380-S"

"Stallion; Black. White star with narrow stripe to muzzle, veering toward left nostril. Left foreleg white stocking to knee. Right foreleg white around pastern. Left and right hind legs white stockings to hocks. Foaled April 18, 2011; Bred and owned by ARLIN WAREING, Blackfoot, ID; Sire HILL-MOOR DOUBLE DIAMOND (C.420) 22801-S; Dam RED BRAE LADY DIANE (147142) 23726-M."

"DUKE'S WILLIAM OF SHADY GROVE - 23383-S"

"Stallion; Black. Large irregular white diamond, widening between eyes, finishing to a point on the right side of the face. Snip on right side of nose. Lower lip partially white. Left foreleg white stocking above knee, higher in back. Right foreleg white sock below knee with point on outside and lower on inside. Left hind leg white stocking below hock in back and higher in front above hock. Right hind leg white stocking below hock in back and high in front to point in gaskin. Foaled April 12, 2011; Bred and owned by CYNTHIA L. TEMAAT, Spearville, KS; Sire RED BRAE DUKE (46746) 23069-S; Dam KALLISTO SHIRES LADY KATHRYN 24069-M."

"RICE CREEK RAMBO - 23382-S"

"Stallion; Black. Narrow white blaze extending over nose between nostrils. Narrows slightly between eyes. Left foreleg white stocking to above knee. Right foreleg white stocking to above knee. Left hind leg white stocking to above hock. Right hind leg white stocking to above hock. White marking on belly over sheath. Foaled October 25, 2011; Bred and owned by DANIEL A. HUBBELL, Traverse City, MI; Sire HUSKA MILLENNIUM SHIRES CRESCENT MOON 22869-S; Dam STAR-KNIGHT JOSIE (146451) 23735-M."

"RIVER VALLEY'S SIR BUBBA - 23381-S"

"Stallion; Black. Broad white blaze from between ears, between eyes, touching both nostrils over muzzle; lower lip and chin white. Left foreleg white stocking to middle of knee; white hoof. Right foreleg white sock from fetlock to hoof with narrow strip up front to middle of knee. Left hind leg white stocking to below hock in back, to four inches above hock joint in front. Right hind leg white stocking to below hock in back, mid-cannon laterally, to two inches below hock joint in front. Two-inch by 4-inch white belly spot in front of sheath. Whorls mid-forehead and right flank. Foaled May 9, 2010; Bred and owned by HOBERT O. SKAGGS, Franklin, IN; Sire BLACK WALNUT PRINCE WILLIAM 23114-S; Dam HEART MOUNTAIN ROSIE'S RUBY 23655-M."

"RIVER VALLEY'S SIR NIGEL - 23379-S"

"Stallion; Black. Connected narrow star, strip and snip; white chin. Left foreleg white band on outside of knee; white strip on outside of coronet band. Right foreleg white stocking starting at upper knee in front, to lower knee in back. Left and right hind legs white stockings from upper hocks in front to just below hocks in back. White spot behind left elbow on girth; white spot on abdomen. Foaled May 20, 2008; Bred and owned by HOBERT O. SKAGGS, Franklin, IN; Sire RIVER VALLEY'S SIR WADE 22854-S; Dam HEART MOUNTAIN ROSIE'S RUBY 23655-M."

WELCOME NEW MEMBERS

Thank You for Supporting the Shire Horse!

Lynda Fox
Canterbrook Stables,
729 Green Street,
Greensburg, PA 15601

Linda Young
1906 Man O War Court,
Richmond, TX 77406

Lori Ferrell
Red Feather Farm,
9 Hill Prince Drive,
Ocala, FL 34482

T. J. Steed
Redbud Shires *,
919 County Road 204,
Stephenville, TX 76401

Breynn Bailey
2110 Cokey Road,
Rocky Mount, NC 27801

Ava Dillman
P.O. Box 586, Choctaw,
OK 73020

Travis Howell
Howell Brothers Stables,
2365 Clinger Drive,
American Falls, ID 83211

Debbie Jeppesen
Wind in the Willows Walkers,
170 Sun Prairie Rd.,
Great Falls, MT 59404

Carey Monaghan
8996 -- 22nd Street,
Perry, KS 66073

Kimberly S. Julius
GreyBell Ranch,
13419 Valley Township Road,
Vale, SD 57788

Christopher J. Ferguson
Ferguson * Family Acres,
38210 County Route 25, Ant-
werp, NY 13608

Angela Norton
Mill Creek Farm
610 Pond Avenue,
Southold, NY 11971

Heather Rioux
R. R. #1,
Onoway, AB CAN T0E 1V0

Leslie Donnelly
Shamrock Shires,
130 McKeown Lane,
Cardwell, MT 59721

Sarka Velka-Bozeman
14010 Ewing Road,
Moores Hill, IN 47032

Rhonda Zeigler
P.O. Box 246, 275 Old Mill Rd.,
Chalk Hill, PA 15421

Jackie Johnston
P.O. Box 664,
Susanville, CA 96130

Tammy Anderson
Peppertree Farms,
28375 Mary Place,
Murrieta, CA 92563

Myrna Rhinehart
P.O. Box 408,
Lake Delton, WI 53940

Jenson Shires LLC
Jenson Shires LLC - Clark Jenson,
9110 P 35,
Blair, NE 68008

Debra C. Kelly
Farraway Farm,
2337 Box Elder Rd.,
Suffolk, VA 23437

Heidi Stewart
17252 30th Lane North,
Loxahatchee, FL 33470

Annette Fielding
Western Skies Ventures,
4909 W. 5500 S.,
Hooper, UT 84315

Aaron Norris
269 Triple E Dr.,
Boone, NC 28607

MacKenzie Shires LLC
MacKenzie Shires - Casey MacKen-
zie,
5600 Nelson Rd.,
Longmont, CO 80503

Paul Simmons
Mordearg Shires,
Parklands House Farm,
Lapley Lane Stretton,
Staffordshire UK ST199LE

James Edmiston
Iron Horse Ranch,
311 Horton Rd.,
Edgewood, NM 87015

We welcome all our new mem-
bers to our Shire Family! Thank
you! Please feel free to partici-
pate in our "Meet the Members"
or "Member's News"



Fig. 5: Field-Marshal 5th was bred by King George V and twice won the London Championship.

Fig. 6: Liver-pool Dock Horses. Two horses often pulled 12-ton loads on the level dock sides.



Fig. 7: Shire at work for British Rail at Paddington, London 1925. A hospital has now replaced the buildings in the background.



Fig. 8: Plastered in Mud. Hauling timber in 1931, near Hildenborough, Kent. This was one of the worst jobs Shires were called to do, and the working life of these horses was very short.

What is a Shire Part 2~ By Arlin Wareing

Editors Note: The comments and opinions reflected in the discussion below are not necessarily those of the ASHA, the Board of Directors or the Editor. They are the opinion and points of the author. The hope of this column is to generate conversation and a place to discuss points of view in the Shire industry. We encourage responses to print in the next Bulletin.

I ask the readers to let me know if they disagreed or failed to understand some of what I said, thus providing for various views that we could debate and come to a united understanding about. I did not get any complaints, but I hear of some behind the scenes criticism. They seemed to believe the Shire began as a riding horse, not the time frame I outlined. The Shire Horse Society commissioned Keith Chivers, who held a degree from Oxford University in Journalism and was a Schoolmaster, to research and write a history of the Shire. Keith spent three years full time in this work and in 1976 published the book, *The Shire Horse*. I knew Mr. Chivers personally having had many conversations with him, both before and after the book was printed. He was a very knowledgeable and interesting man. He was very dedicated to his work. The forward to the book was written by His Royal Highness, Prince Philip. Much of the history I wrote about came from this book, and I have every reason in the world to believe it is correct. I also have a friend that has studied the Renaissance time period extensively. He too confirms the fact the horses used at the time were not Shires as we know them.

In England it was a well known practice that a teamster after working in the fields during the day was not allowed to ride the horse back to the stable at night. John Peacock, teamster and presenter at the 1996 World Shire Congress in Peterborough, who worked as a young man along with his father for one of London's major breweries said, "if a teamster was ever caught trotting a Shire they were fired on the spot". Even today farm classes at shows are all done at a walk. Even the Show Hitches, up to a few years ago, were only trotted for a couple of 100 yard passes past the judge.

In the last issue I failed to identify the pictures by number so we could easily refer back to them as we move along. Please note the 1791 painting as Fig. 1, the modern Shire as Fig. 2, the English stallion as Fig. 3, and Boro Blusterer as Fig. 4. We will be coming back to them on a regular basis, so keep your past Bulletins handy.

As noted in the last Bulletin these articles are to be a study in conformation, but it is important to fully understand the history of how it was developed and what happened when it wasn't followed. We pretty well covered the early days of development, but the path of progression during various periods of time sheds light on the Shire horse of today. Due to the good quality of the breed and the advancements made in Britain, a demand for Shires exceeded the supply during the mid to late 1800s. Great Britain was a leading world power with the need for movement of commerce throughout the country and there was an ever increasing need for good horses in the US. Breeders soon realized they could sell whatever they raised and quantity took over from quality. The Shire Horse Society helped fund the organizing of the ASHA in an effort to promote better breeders in this country. This would reduce imports but it was too late, the Americans had already turned to the Percheron and Belgian breeds. Imports continued but mainly stallions, which were used on the native grade mares. A lot of good breeders came into being and did advance the quality in this country, but the breed failed to regain standing with the other breeds.

Imports continued until after World War I. Boro Blusterer imported by Truman's Pioneer Stud Farm was one example. See Fig. 4.

It is hard to comprehend the number of horses needed during those days. Here is an example of the need which also gives light to the fact the horses may have lacked in quality. About 30 years ago I met an elderly fellow in England that was a vet that spent his productive years working for British Rail. Britain has a massive railroad system through-out the country which goes to all the major cities. Goods were transported from area to area as trucks do in this country today. Lots of goods came into and out of the seaports of London, Liverpool, Southampton, and others. Many stories have been told about the Shires used on the docks, but horses were also part of the overall distribution. This fellow told me that British Rail put 3500 horses to work every day. For various reasons they had to maintain 5000 in their stables to meet that need. This means nearly a third of them were unable to work on any given day. The average working life of the 5000 horses was 18 months. If you do the math on this, it figures out to be less than 400 days. This would indicate over 3500 Shires were needed each year for British Rail alone. British Rail was only one of the many needing horses. The conditions these horses were forced to work under were terrible, especially on the docks. These horses worked hard for many hours and put in damp cold stables with less than ideal food. Shift work was common with the teamster being responsible to harness his team at the beginning of his shift and remove it at the end. All too often these men were too lazy to follow the rules and rather than harness a fresh horse they would use the same one for the next shift. Poor conformation was also a major factor.

Raising shires was the lively hood for many breeders both large and small. Tom Forshaw was one such person. He maintained a stable of 700 stallions, all of top quality. These stallions were leased out for the season to all parts of the country. In many cases he had stallion walkers (handlers), and provided a complete service. Fig. 3 was a Forshaw horse and represents the type he maintained. King George V was a big supporter of the breed and also had a stable of great horses; see Fig. 5, which is one of his champion stallions. I show this picture to point out another popular type during the same time period. Not all the horses bred were bad, but the breed in general had moved far from the proven standards of earlier years.

During the time I was importing I heard it said often, "I want an old type Shire". I still hear that term today and I really don't know what they mean. Regardless of what meaning you apply to this, those horses are gone. The American breeders nearly stopped breeding during the 1930s and even the ASHA failed twenty years later. English breeders would say, "thank God", the old type is gone. The pictures we see are of the champions from various breeders, but the breed as a whole was much different, see Fig. 6, 7, and 8. These pictures show the true working horse of that time. Complete books have been written about what I have tried to say in a few lines.

The use of Shires for work continued in England long past the time America had switched to modern equipment. I had a friend still delivering milk door to door with a horse and wagon well into the 1980s. The last horse delivery of Beer in London was in 2008. However the many uses for horses started to end following World War II in the 1940's. A few very dedicated Shire breeders seen the writing on the wall, but still had a love for the breed and a desire to improve their horses to its once noble standing. The SHS opened the Stud Book in a grading up procedure, which brought in mares with a Clyde background. This was not a move to increase numbers, but rather a move to improve. There were also a number of one night stands behind the barn with Clyde Stallions. While considered less than honest by some, it was a move to improve the breed in a short time. There was no intent to degrade the Stud Book, as it was believed it too would fail. These were the true saviors of the breed. This period provided a perfect time for selective breeding and major culling. I don't have the exact numbers, but I'm sure I'm safe in saying 90% of the male foals born at that time ended up on some Frenchmen's dinner table and many fillies as well. Over a thirty year period the breed came back to its glory roots. I'm convinced they developed one of the finest draft breeds ever. Beginning in about 1970 we Americans were on course to follow those improvements, but with demand exceeding supply we have lost ground over the past 20 years. Our breeders have produced some of the best horses ever, but nearly everyone would agree, the average quality has dropped. Like all of you I'm not happy with this down turn in our economy, but it does give us an opportunity to improve our breed. We need to evaluate our breeding practices and be prepared to cull more. Thus when the economy improves we can again provide quality stock for future buyers. Above all we need to be united in our efforts.

In the next issue we will start by going over the Breed Standards.

Missing the Meeting Minutes

www.shirehorse.org

In the 'Members Only' section choose
'Meeting Minutes'

Select the minutes you are interested in
from the menu

~ Coming Summer 2012 ~

Reprinting of:

ASHA Breeders Brochure

Rates:

~NEW ~ \$200 Full Page 5 1/4' X 8 1/2" Full Color Ad

* Includes 10 Free Copies for your use and distribution.

** Includes Breeders Listing in Bulletin

\$150 Full Page 5 1/4' X 8 1/2" Full Color Ad

* Includes 10 Free Copies for your use and distribution.

\$50 Breeders Listing in Back of Brochure

** *Includes 1 Free Copy for your use and distribution.

AD COPY DUE JULY 15, 2012

Jpeg or PDF Files Preferred

The second print, in 2010, of this publication included 25 ASHA members/ breeders. Some of the best advertising you will get in the industry. First come first serve for ad space.

This publication is sent out to all new members and distributed by ASHA and its members at trade shows and sponsored events.

Includes many informational articles on Shire horses as well as contact information for ASHA and its members.

DEADLINE CHANGED- due to time and response we have changed our timeline to make the most of the publication.

For More Information and To Reserve Your Spot:

Kim Parrington- Murchison
Treasurer

0185 CR 225, Rifle, CO 81650
(970) 625-1142 thshire@sopris.net

** Need help with your ad - contact your Editors



Quarterly Transfers:

September 30th to December 31, 2011

Remember to check your documents for errors upon receipt from the Secretary. Contact us if you find any problems.

"C-20172-G - The Gelding, PRAIRIE CREEK DICKENS (15/16 SHIRE)

from CAROLINE and DUANE RUD, Dexter, MN transferred to LORI FERRELL, Ocala, FL 12/31/2011

"22683-S - The Stallion, EATON ACRES SAMSON"

from MARY JO BRANNON, Nova, OH transferred to GENE LaMOTHE, Antwerp, NY 12/17/2005 transferred to CHRISTOPHER FERGUSON, Antwerp, NY 11/1/2011

"22824-M - The Mare, MOONLIGHT LADY FLASH"

from ROBYN MILLER, Jonesboro, IL transferred to DEBRA C. KELLY, Suffolk, VA 8/25/2011

"22978-S - The Gelding, FORTHOFFER'S SOLOMAN"

from CHERI TODD and STACEY LACKEY, Simonton, TX transferred to LINDA YOUNG, Richmond, TX 12/30/2011

"23035-S - The Gelding, TALLY HO BK'S SIR CAMELOT"

from DAN TOWBIN, Las Vegas, NV transferred to RENATA MALO-JUVERA ABARCA, Distrito Federal MEX 10/28/2009

"23154-S - The Gelding, OX KILL SILVER FOX"

from EDWARD ERNST, Southold, NY transferred to ANGELA NORTON, Southold, NY 2/2/2012

"23199-S - The Gelding, OX KILL BLUE JIM"

from EDWARD ERNST, Southold, NY transferred to ANGELA NORTON, Southold, NY 2/2/2012

"23201-S - The Gelding, OX KILL MERLIN"

from EDWARD ERNST, Southold, NY transferred to ANGELA NORTON, Southold, NY 2/2/2012

"23249-S - The Stallion, OX KILL HEY JUDE"

from EDWARD ERNST, Southold, NY transferred to ANGELA NORTON, Southold, NY 2/2/2012

"23250-S - The Gelding, OX KILL PINBALL WIZARD"

from EDWARD ERNST, Southold, NY transferred to ANGELA NORTON, Southold, NY 2/2/2012

"23251-S - The Gelding, OX KILL BIG BEN"

from EDWARD ERNST, Southold, NY transferred to ANGELA NORTON, Southold, NY 2/2/2012

"23357-S - The Stallion, TALLY HO DUKE'S CADENCE"

from KIMBERLY N. PARRINGTON-MURCHISON, Rifle, CO transferred to COLLEEN FOGLE, Welch, MN 11/15/2011

"23367-S - The Stallion, TALLY HO BK'S DILLENGER"

from KIMBERLY N. PARRINGTON-MURCHISON, Rifle, CO transferred to ROBERT STUTTS, Rye, TX 12/8/2011

"23373-S - The Stallion, TALLY HO DEXTER"

from SHAD and KIM MURCHISON, Rifle, CO transferred to CASEY MACKENZIE, Longmont, CO 10/14/2011

"23379-S - The Stallion, RIVER VALLEY'S SIR NIGEL"

from HOBERT O. SKAGGS, Franklin, IN transferred to THOMAS K. CANINE, Spring Hope, NC 3/27/2011

"23380-S - The Stallion, DUA HE CHI'S KING EDWARD"
 from ARLIN WAREING, Blackfoot, ID transferred to JAMES JEFFREY VAN-
 NURDEN, Litchfield, MN 11/1/2011

"23411-M - The Mare, BRIGHTENRIDGE TATTONS BAILEY"
 from CARL L. and CHERYL HEITKAMP, Adrian, MN transferred to CHARI GIL-
 BERT, Watervliet, MI 12/17/2011

"23685-M - The Mare, MAINWARING'S ROSE OF SHARON"
 from CHRISJENNA MARQUARDT, Kneeland, CA transferred to TAMMY AN-
 DERSON, Murrieta, CA 9/1/2011

"23716-M - The Mare, JAMES VALLEY CLAIRE DE LUNE"
 from LARISSA HUNSBERGER, Wakarusa, IN transferred to JACK HICKS, Perry,
 OK 9/15/2010

"23722-M - The Mare, STEEGE'S ZAIDE"
 from ROY and CINDY SWANBY, Helena, MT transferred to DEBBIE JEPPESEN,
 Great Falls, MT 10/1/2011

"23938-M - The Mare, NORTHEAST ARISTOCRAT'S ABBIGAIL"
 from ROBERT TAYLOR II, Owego, NY transferred to JANET L. LONG, Epsom,
 NH 1/2/2012

"23942-M - The Mare, TALLY HO BK'S LADY SABRINA"
 from DAN TOWBIN, Las Vegas, NV transferred to RENATA MALO-JUVERA
 ABARCA, Distrito Federal MEX 10/28/2009

"24152-M - The Mare, DUKE'S ENGLISH ROSE"
 from TAMMY HANNAH, Canton, NC transferred to LYNDA FOX, Greensburg, PA
 8/7/2011

"24162-M - The Mare, DOOR T BLOSSOM"
 from LARRY DAUGHERTY, Seiling, OK transferred to AVA DILLMAN, Choctaw,
 OK 11/15/2011

"24231-M - The Mare, JENSON'S MAJOR EVE"
 from CHRIS MEGGS, Riegelwood, NC transferred to ERIKA KELLAR, Bon Aqua,
 TN 1/12/8201"

"24259-M - The Mare, MCM PIPPI LONGSTOCKINGS"
 from JACK and NATALIE JOHNSON, Nisland, SD transferred to KIMBERLY S.
 JULIUS, Vale, SD 12/28/2011

"24260-M - The Mare, MCM HEARTS A POPPIN"
 from JACK and NATALIE JOHNSON, Nisland, SD transferred to KIMBERLY S.
 JULIUS, Vale, SD 12/28/2011

"24315-M - The Mare, BREMERS BLACK DAHLIA"
 from SHANE and CINDY OKANO, Armstrong, BC CAN transferred to HEATHER
 RIOUX, Onoway, AB CAN 1/8/2012

"24343-M - The Mare, SUDDEN CREEK ALVA"
 from KEN KNUTH, Slayton, MN transferred to CHRISTY SUR-
 PRENANT-RILEY, Brewster, MN 2/1/2012

"24423-M - The Mare, SUDDEN CREEK TESS"
 from KEN KNUTH, Slayton, MN transferred to CHRISTY SUR-
 PRENANT-RILEY, Brewster, MN 2/1/2012

"24456-M - The Mare, BAILEY'S TATTON PRINCESS"
 from CARL L. and CHERYL HEITKAMP, Adrian, MN trans-
 ferred to RHONDA ZEIGLER, Chalk Hill, PA 2/23/2012

"24500-M - The Mare, NORTHEAST ANGELINA"
 from JENSON SHIRES, Blair, NE transferred to JANET L.
 LONG, Epsom, NH 1/1/2012

"24627-M - The Mare, HICKORY HILL ADELLE"
 from ROBERT TAYLOR II, Owego, NY transferred to JANET L.
 LONG, Epsom, NH 1/2/2012

"24628-M - The Mare, HIGH MEADOW HADDIE"
 from W. E. JULIEN, Omaha, NE transferred to ROB RICH, Bara-
 boo, WI 9/1/2011" transferred to JENNIFER CWAGENBERG,
 Honey Grove, TX 2/1/2012

**"24639-M - The Mare, GLORY TO GOD'S AMAZING
 GRACE"**
 from AARON WEIZENEGGER, Coon Rapids, MN transferred to
 MELISSA NEVILLE, Sharon Springs, NY 10/14/2010

Do You have Address – Email changes?

*To make sure your service is uninterrupted,
 Please be sure to inform the ASHA office
 Of any changes in postal address, email address
 Or phone number*

Office hours:

9am to 3pm CDT Tuesday, Wednesday, & Thursdays.

Myrna Rhinehart Secretary

American Shire Horse Association

P.O. Box 408 ~ Lake Delton, WI 53940

Phone: 888-302-6643

email: secretary@shirehorse.org

As I See It:

Have a concern or problem and would like to share it with the membership? Here is the column for you. The following criteria, adopted at the 2005 Annual ASHA Meeting, must be followed.

- 1) All copy must be camera ready.
- 2) No profanity.
- 3) All copy must be 1/2 page or less inclusive of signature. 1/2 page is defined as 5" X 6".
- 4) Original Signature from the person submitting it must be included.
- 5) If anyone person or position is mentioned– written permission from that person must accompany the submission.
- 6) A member may submit one article per newsletter. This includes articles signed by multiple members.
- 7) The editor may decide not to print a submission.



Ayrshire Farm is Proud to announce the release of

Achenbach

Hitching And Driving

A video Companion .

This instructional DVD delves into the highlights and key parts to the Achenbach driving methods and is an accompaniment to the book also available from Ayrshire farm.

Please visit our website
www.achenbachdriving.com
 for more information and how to order



Note: *Motions are italicized. MC = Motion Carried*

1. **Call to Order** - President Dan Hubbell called the meeting to order at 10:54 a.m.
2. **Roll Call** - Interim Secretary Sharon McLin took roll. Present: Dan Hubbell, Karla Stoner, Kim Murchison, Leanne Hoagland, Danelle Kinney, Janet Long, Gene McCaffrey, Todd Riedel, Paul Tyrrell, Sharon McLin, and incoming Secretary Myrna Rhinehart.
3. **Additions or deletions to the agenda** - no changes made. Dan stated that he will leave the agenda fairly broad and flexible. He asked how the board wanted to handle the President transition. The board requested he continue with the meeting and make the change at the end. Dan also asked what the board wanted him to do with the packet of registrations and transfers mailed to him, but not received before he left for MN. The board authorized him to sign the documents and mail them out.
4. **President's Report** – See Member's Meeting Minutes.
5. **Interim Secretary's Report** - Sharon McLin presented the Interim Secretary's Report (Appendix A). *Karla Stoner moved to accept the Interim Secretary's report. Danelle Kinney 2nd, MC.*
6. **Appointment of the ASHA Secretary** - *Karla Stoner moved to appoint Myrna Rhinehart for the ASHA Secretary position for the 2012 – 2013 year. Danelle Kinney 2nd. Motion carried.*
7. **Treasurer's Report** - Kim Murchison gave the Treasurer's Report for 2011 (Appendix B). She stated that the office now has the ability to take credit cards over the phone, so we are trying not to use PayPal as the fees are very expensive. *Karla Stoner moved to approve the Treasurer's Report. Leanne Hoagland 2nd. MC.*
8. **Reading and approval of minutes not already approved.** No minutes ready for approval.
9. **Committee Reports** (active committees only):
 - a. **Breed Promotion** (advertising, expos & other) – Karla Stoner reported (Appendix C).
 - Advertising – proposal from Judy Brodland (Appendix D) – to be blended with new Marketing Committee when it is set up (see below). Karla will update Judy.
 - Proposal for new Marketing Committee – Discussion surrounded how to establish new committees and reorganize the committee system. *Dan Hubbell appointed Co-chairs Leanne Hoagland, Karla Stoner, Janet Long, and Myrna Rhinehart to set up a new Marketing Committee, merging Website, Newsletter, Merchandise, Advertising and Trade Show committees.* Potential Marketing Committee members mentioned were Judy Brodland, Jenny Cournoyer, and Rob Rich. Marketing Co-chairs need to report back to the board with a plan framework by April 1st and have contacted members who are interested in the Marketing Committee.
 - Breed partnership agreements – American Driving Society example – Paul Tyrrell has a copy of their agreement form. Referred to the new Marketing Committee for further discussion.
 - Stipend application forms – suggested revisions – Karla Stoner referred this to the new Marketing Committee

- b. **Breed Shows** – Vicky McCaffrey gave report for 2011 (Appendix E). She stated that we need to have an article in the bulletin on how to find show information on the website. The 2012 ASHA National Show will be at the Keystone International Livestock Exposition. Vicky announced the proposed schedule for 2012 Regional shows (pg 3 of Appendix E) and requested Board approval.

Show committee would like a fund in the budget for shows that carries over year to year in order to build finances for expenses, such as bulk pricing for awards. Alternatives to ASHA brasses for regional trophies are under consideration, due to significantly increased expenses. *Kim Murchison moved to establish a fund for the Breed Show Committee. Karla Stoner 2nd. MC.*

Kim Murchison stated that she has received lots of concerns about the number of shows and locations as they relate to the Premier Points and All-American Awards. Fewer shows and greater travel distances in central and western US give unfair advantage to east. Vicky McCaffrey recommended that this subject go back to the Show Committee.

Janet Long moved to approve the 2012 show rotation schedule, Todd Riedel 2nd. MC.

Sharon McLin reported on a situation at the L.A. National show. A yearling gelding was entered in the colt class, placed 2nd and was then chosen as Reserve Champion Stallion. After some discussion, the Board asked Myrna Rhinehart to send a letter to the exhibitor who entered the gelding in the stallion class and to contact the former owner for documentation of when the colt was gelded. If the colt was gelded prior to the show, ASHA show rules state that any horse found to be ineligible to show after the judging will forfeit awards (and points). LA show results cannot be changed, but ASHA records will be revised and 2011 Junior Champion Stallion will be open. Myrna will report back of the progress of the situation by the next quarterly meeting. It was also recommended that the LA show coordinator suggest to the show office that they change the class titles from 'Colt' classes to 'Stallion' classes (e.g., Stallion foals, Yearling Stallions, 2 year old Stallions, etc.) to avoid future confusion.

- c. **Education** – Kim Murchison stated that education articles were in the Bulletin, but they are always looking for more topics/submissions. Nan Osterhoudt, organizer for 2012 Education Day, reported that she will put together a "lessons learned" from this type of event. She felt Education Day needs outside funding to be able to draw good speakers and venues. Planning was a year and a half in advance, partly because feedback took so long. She suggested planning for a big draw event every other year, with a smaller event for years in between and to consider other ideas for Members' Day. Member Katie Ruppert commented she liked that this year's event was open to the whole draft horse community.
- d. **Shire All North American Program** – Danelle Kinney reported (Appendix F). The committee works year round. There were sixty entries in 2011, including CSHA horses. The committee is looking at more electronic options for submitting paperwork and working on 2012 qualifying shows. Only specific action for the Board is the 2012 budget, which will be handled during that discussion.

e. The American Shire Horse Educational Foundation - Karla reported

Appointment of new foundation officers – Proposed slate: Marsha Mayeda, Pres., Paul Tyrrell, VP, Dawn Wikel, Sec. (tentative), Ken Knuth, Treas. Danelle Kinney was proposed as the fourth ASHA board member to the ASHEF to fill the vacancy from Heinz Naef's resignation. *Karla Stoner moved that the proposed slate of officers for ASHEF be approved. Paul Tyrrell 2nd. MC*

Status of Pedigree Analysis Program – Paul Tyrrell reported on the status of the study that Dr. Rebecca Splan of Virginia Tech MARE Center is working on. All provided studbook data has been reviewed and Dr. Splan's group is starting on the inbreeding calculations for American bred Shires. They will then identify founding sires and dams and their contributions to the breed. The analysis will expand to SHS horse when the data is available. It will be about six months before the information is out. This analysis will help define the gene pool for the American Shire Horse. Leanne Hoagland suggested that the finished product be a topic for a future Education Day.

f. Members' Bulletin –Leanne Hoagland (Appendix G). Dan Hubbell asked if there can be a database on the website for a collection of the articles from the Bulletin. Leanne stated that PDF's can be on the Members Only

part of the website. Leanne will send a table of articles to Janet Long to be included on the website. The 2011 Bulletin had 36 different articles, came in under budget and had \$1390 of advertising income. More Member News is desired and we need to consider other electronic delivery methods besides emailing. The file is too big for email to many of the members (average is 22-28 pages).

Leanne stated that ASHA needs a formal Press Packet, so she did a request for photos in the winter Bulletin. All submitted photos for a Press Packet need to be 300 dpi or 2-3 MBs and have a release from the photographer who took the photo. So far there has been no response to this request.

There was a submission for regional news, but it needs to be in a format that can be edited so it can be fit into the Bulletin. Leanne will ask the author to re-submit the article in a format she can work with.

g. Membership Services –Nan Osterhoudt reported on what she sends to new members, but feels it needs to be "prettier" and more consistent. It will be looked at by the Marketing Committee. Todd Riedel asked about what we send to people who inquire about the Shire horse. The Breeders Brochure and the tri-fold ASHA brochure are sent.

h. Merchandise – Karla Stoner reported (Appendix H). This committee will be merged into the new Marketing Committee.

i. Printed Studbook – Paul Tyrrell reported on the online company (Blurb) that puts the studbook on a website where people can order copies. It then prints and sends a studbook on a per order basis for \$13.95 each our cost. ASHA can set a profit price. Paul has an employee working on the next volume of the studbook.

j. Regional Chapters – Janet Long reported on the New England Shire Friends chapter that grew from Heinz Naef's suggestion for regional chapters through the country. NESF has been having educational and social events that have really been bringing these members together. She highly recommends that other regions do the same thing. Karla Stoner asked about any insurance issues. Janet said it is on a facility by facility basis and ASHA is not mentioned as a sponsor.

k. Rules and Editing

Registry - hardship cases Sharon McLin reported on Debbie Kelly, VA, owns Moonlight Lady Flash, 22 yr. old mare donated to a police department by an owner who did not sign the transfer papers. The mare has been retired from the police department, and Debbie would like approval to get the mare transferred to her. *Karla Stoner moved to approve the transfer of Moonlight Lady Flash to Debbie Kelly, Todd Riedel 2nd. Discussion followed. Question called. MC.*

Update on Renata Malo-Juvera's horses in Mexico: The previous owner died and his wife sold the horses without required documentation of her authority to do this. She has been contacted and the documentation provided. Problem resolved.

Shire Sport Horse gelding: Count's Darby Grande – registration application has the wrong signature for the Stallion owner (stallion is dead, and owner is in a nursing home and not competent). Everything else is ready to go. *Leanne Hoagland moved to approve the registration on Count's Darby Grande. Janet Long 2nd. MC.*

Melissa Neville: Has three horses whose date of sale was entered incorrectly in database. *Danelle Kinney moved to correct date of sale of Melissa Neville's horses in the ASHA database. Karla Stoner 2nd. MC.*

Glory to God's Amazing Grace: seller did not sign the transfer but signed the registration application. Secretary is unable to reach the seller. *Todd Riedel moved to waive the requirement of the signature for the transfer of Glory to God's Amazing Grace, Karla Stoner 2nd. MC.*

Creekside's Xena: Never transferred to previous owner and Secretary has not been able to contact that person. *Todd Riedel moved to accept the transfer of Creekside's Xena, Karla Stoner 2nd. MC.*

Jennifer Gilson: Not a hardship case yet. How should we handle that Fox Valley Iced Coffee was not transferred in SHS during the time period when her 2006 mare offspring (My Old Sweet Daisy) was born, so

the owner of record of Daisy's dam did not sign the Daisy's registration application? *Karla Stoner moved to proceed as follows with My Old Sweet Daisy's application: Get parentage verification for the mare [Daisy], and pending the result of the parentage verification, we accept the mare for registration and that the owner pays registration, parentage verification, and transfer fees. Todd Riedel 2nd. MC.*

Frozen DNA – Karla Stoner reported.

- Approval of forms for office notification and sales – tabled. Karla will send information out if needed.
- Extension of grandfathering period for registering frozen DNA was set for 2011 through 2013, but it hasn't been started yet. Rules would like the board to extend the grandfathering period another year to allow a full two years. *Karla Stoner moved that the grandfathering period be extended to Dec. 31, 2014. Todd Riedel 2nd. MC.*

Ownership of registered horses by an entity – review of policies and earlier board decision – Jenson's horses are not being named under the legal entity of Jenson Shires LLC, but the farm name Jenson Shires. *Karla Stoner moved to reverse the decision to allow registration of horses under the ownership of a farm name at the 2008 Annual Meeting. Leanne Hoagland 2nd.* Discussion ensued regarding what the current bylaws and registration rules state in relation to this issue. Question called. *Motion failed. Janet Long moved that we fix the Bylaws and Registration Rules so that a "person" is fully defined. Paul Tyrrell 2nd. MC.* The Rules committee headed by Gene McCaffrey will come back with the exact wording recommendation for the definition of a "person" in the by laws and registration rules for board approval by the Q2 teleconference meeting. Following further discussion, *Janet Long moved that Jenson Shires LLC is given a free corporate membership for 2012. Paul Tyrrell 2nd. MC.* Karla again raised the question of what to do about the earlier board decision. It was decided to wait for the recommendation from the Rules Committee to make that decision.

Revision to corporate member dues - Karla Stoner stated that the corporate dues was set at \$275/yr. at the 2007 annual meeting in Denver, but has been misprinted as \$275/5 years in the Bulletin. Topic moved to budget discussions.

Requests for bylaw changes

- Ease restrictions on electronic communications – referred to the Rules Committee.
- Revise board meeting attendance requirements – referred to the Rules Committee.
- Change of dates for annual meeting – Todd Riedel said a member asked him to bring this forward, but had no suggestions. It was discussed that there really is no perfect meeting date. No change was recommended.

BOD teleconference meetings - notice to membership. Karla Stoner reported that the by laws do not require notice to the membership for special or teleconference board meetings (Article V, Section 13.). In the past, notices of board teleconferences and agendas have been posted on the website or email blasted as a courtesy to members to allow their input, but this has not always been consistent. Setting up an annual schedule of board meeting dates was discussed. *Todd Riedel moved that the board set up a quarterly meeting calendar of the February Annual Meeting, 2nd quarter teleconference in May, 3rd quarter teleconference in August, and 4th quarter teleconference in December for the purposes of notifying the membership of board meetings. Karla Stoner 2nd. MC.*

1. Voluntary Stallion Inspection Program (Appendix I). – Paul Tyrrell reported on the work the committee has been doing and distributed a revised veterinary inspection form, explaining the committee's recommendations. Dan Hubbell asked what the differences are between the CSHA and SH programs, and the ASHA proposal. Paul said that ASHA does not include the exclusion of wall eyes and alternate colors. Paul Tyrrell will correct typos and add a second check off column to the De-tailed Examination section of the veterinary inspection form to indicate severity. *Paul Tyrrell moved that we accept the Stallion Inspection committee's revised veterinary inspection form. Karla Stoner 2nd. MC.*

Member requests to drop the program – This was mentioned during the meeting, but the program is a 3 year voluntary trial. The board can decide what to do with the program at the conclusion of the trial period

- Inclusion of a performance section. This will be reviewed in the future.

m. Website / online studbook – Janet Long asked to defer this item to a future teleconference.

n. Youth – (Appendix J) Danelle Kinney reported. Webpage was down for some time, but Janet Long has recently restored it.
- Scholarship possibilities – Todd Riedel asked if the scholarship for youth can be larger to be more competitive with other draft organizations (current scholarship is \$200.00). Paul Tyrrell stated that ASHEF is not currently set up to contribute to any one individual, but revisions to allow scholarships will be looked into. The Shire Foundation (McLin's) is another alternative and Todd Riedel will help the Youth Committee investigate how to set up a fund within ASHA so people can make tax deductible contributions to a 501C3 youth scholarship fund. Status reports will be made at quarterly board teleconferences.

- Paul Tyrrell recommended establishing a perpetual trophy in memory of youth member Annamay Naef. This was referred to the Show Committee.

10.) **Old Business:**

- a. Registration amnesty program – final report – Kim Murchison reported that ASHA registered close to 30 horses that might have not gotten registered, 5 stallions, 23 mares. Kim recommended the board revisit this type of program in 5 – 7 years,
- b. Voluntary Stallion Reports – Leanne Hoagland reported that 17 stallion reports were turned in from 15 owners, with 55 possible foals for 2012. Each owner got a free breeders listing in the Bulletin and Janet Long is going to put the list on the website. There are a number of opportunities for statistical information from these reports, as well as paper trail for breedings.
- c. Outsourcing registry/membership services – status report (Appendix K). Karla Stoner summarized the 2011 research into outsourcing possibilities as a back up for office duties, including registry and membership database management. Several options were identified, but with the office transition do not appear to be cost effective at this time. However, the need for a good written in-house back up plan for critical office tasks was emphasized.

Recess for the day.

02/20/12 - Call to order 8:00 AM by President Dan Hubbell

Before starting new business topics, Dan clarified the Jenson Shires registry situation. Myrna Rhinehart is to change all '... DBA Jenson Shires' ownerships back to 'Jenson Shires' ownerships in the studbook until all information is in and a decision has been made on how to handle the ownership by an entity situation.

11.) New Business:

- a. 2012 budget discussion – (Appendix L) Kim Murchison presented the proposed budget for 2012. There were concerns regarding the amounts in the proposed Horse Show Costs line item, and the Promotional line item. After some discussion, it was decided to move \$600 of the unused \$800 annual meeting cost funds to Show costs. The other \$200 will cover costs of the annual meeting. For the promotion line item, Paul Tyrrell suggested applying to the ASHEF for funding of trade show breed booths. Funding will be requested and status will be reported when the budget is reviewed in July or at the 3rd quarter teleconference. Kim will send a budget report to the board by July 1st. The board was reminded to plan for adding to the financial reserves.
- b. 2012 Budget Approval – *Leanne moved to accept the proposed budget [with changes, taking \$600 from Annual Board Meeting and adding it to Horse Show Costs]. Gene McCaffrey, 2nd. MC.*

Other Financial items:

Proposed Fee Changes – (Appendix M) Kim Murchison presented proposed fee changes. The corporate membership fee duration was discussed. Proposed changes included going back to a 5 year term for corporate dues of \$275. *Karla Stoner moved that the board approve the proposed fee changes to start June 1, 2012. Gene McCaffrey 2nd. MC.*

Life member mailings other than ballots – Sharon McLin recommended reinstating postcards to life members with each election ballot requiring them to return the cards if they want to continue receiving the bulletin and USPS mailings other than election material.

PayPal account access – After a discussion of problems with the PayPal account, Kim and Janet Long will close out the old account, which is tied to the BB&T bank account and set up a new PayPal account for the office. This will allow the BB&T bank account to be closed.

- c. Working with other registries - Todd Riedel reported receiving an inquiry from a member about what the status is on working with other registries. How are we reaching out to SHS, Europe, Australia, etc? Paul Tyrrell reported that he and Heinz Naef have had contact with representatives of these registries at the Peterborough Show each year. *Dan Hubbell appointed Paul Tyrrell to be the Ambassador for ASHA to other Shire breed registries.*

Sharon reported that a CHSA member has inquired about registering a Canadian horse with ASHA, but this is prohibited by our Registration Rules. After some discussion it was recommended we appoint a delegation to approach CHSA and offer our assistance with processing their registrations through their own Heavy Horse program, and look at further cooperation between the registries. *Dan Hubbell provisionally appointed Janet Long, Vicky McCaffrey, Todd Riedel, Karla Stoner, and Paul Tyrrell to contact CSHA. Vicky McCaffrey will Chair and make contact by May 15, 2012.*

- d. Building the gene pool – status and recommendations. Todd Riedel asked if we know where our genetics are. Do we need imports with specific genetic lines (shipped semen, frozen DNA, breeding stock)? Paul Tyrrell reported the Genetic Analysis Study may answer a lot on this topic. Leanne Hoagland requested quarterly updates on this study for the Bulletin.
- e. Review of status of action items from 2011 annual meeting. (Appendix N) Karla Stoner asked for any other updates in the next two weeks. After that they will be posted on the website and included in the annual meeting minutes.
- f. Committee assignments – (Appendix O). Janet Long reminded all committee chairs that they are responsible for updating the members of their committees on the website.
- g. Annual Meeting location for 2013 – Following Kim Murchison's suggestion, *Karla Stoner moved that we go to Veterinary Genetics Laboratory at University of California-Davis (Sacramento), Feb. 16-18, for the 2013 Annual Meeting and Education Day. Todd Riedel 2nd. MC. Dan Hubbell appointed Kim Murchison, Paul Tyrrell, and Sharon McLin to the 2013 Annual Meeting committee. Paul will check on the date with VGL.*
- h. Other New Business.
President Resignation and Appointment - *Karla Stoner moved the board accept Dan Hubbell's resignation as President. Danelle Kinney 2nd. MC. Gene McCaffrey moved to appoint Todd Riedel as President, Janet Long 2nd. MC. Dan offered to provide assistance until the end of his board term and beyond, if needed.*
Possible 2014 annual Meeting Sites (east) – The following sites were discussed:
Kentucky – Carriage Association International – Paul Tyrrell will check on availability.
Atlanta
Site selection by August 2012 teleconference.

11). Adjournment - Gene moved to adjourn the meeting. Meeting adjourned at 10:38 AM CST.

Respectfully Submitted,

Myrna Rhinehart

Secretary



The American Shire Horse Association

Annual Members' Meeting
La Quinta Inn, Bloomington, MN
Sunday, February 19, 2012

DRAFT minutes – may be revised. To be approved at the Q2 BoD Teleconference

Motion Summary:

Audrey-Lyn Stockton moved to adjourn the Member's Meeting. Vicky McCaffrey 2nd. MC.

Members Attending:

Jan Baumgras – MI
Tony L. Bowers - WI
Michelle Cheever - NY
Jennifer Cwagenberg – TX
Clark Jenson – NE
June Jenson – NE
Ken Knuth – MN
Marlys Knuth – MN
Vicky McCaffrey – NY

Brit M^cLin – CO
Sharon M^cLin - CO
Melissa Neville - NY
Charity O'Dell – NY
Nan Osterhoudt – WI
Butch Ruppert – MI
Audrey-Lyn Stockton - CO
Fred Topping – NY

Board members:

Leanne Hoagland - MT
Dan Hubbell - MI
Danelle Kinney - MN
Janet Long – NH
Gene McCaffrey – NY
Kim Murchison – CO
Todd Riedel – OH
Karla Stoner - MD
Paul Tyrrell – VA

Guests Attending:

Carl Baumgras – MI
Emily Cullison - OH
Henry Neville - NY
Chris Wilson - TX
Scott M^cKinster, MN
Marilyn Ruppert – MI

Secretary:
Myrna Rhinehart

Motions in text of minutes are in *italics*.

Call to order – President Dan Hubbell called the meeting to order at 8:08 AM CST.

Introductions – Dan welcomed everyone and thanked Nan Osterhoudt for a great Education Day. He felt one of the best things about it was many of the attendees were not Shire owners so this was a great way to get the word out on the breed. He asked everyone to introduce themselves. Starting with the Board, introductions went around the room (see list above).

President's Report – Dan reported real progress this past year, in particular the smooth transition to the new secretary. The board was very gratified by the number and quality of the applicants for the position and expressed sincere appreciation to everyone who was willing to help out ASHA in this capacity. He also thanked each of the board members for their efforts last year and especially thanked Sharon McLin for volunteering her time as Interim Secretary while the search for a new secretary was in progress.

4. Other Reports

Office transition – The official transition to the new Secretary is occurring at this meeting. Myrna Rhinehart introduced herself and summarized her background, how it relates to the secretary's job and her outlook on the position. She has no history with the association, so the only thing she will go on is the by laws and registration rules. Training with Sharon McLin, Kim Murchison and Audrey-Lyn Stockton was briefly reviewed along with new office hours. Todd Riedel and Karla Stoner delivered the office equipment and records to Myrna's on the way to the meeting and Karla will be going back with Myrna after the meeting to review the inventory. Sharon has tentative plans to make a trip to the new office in April, if needed, for additional training.

Update – Shires at the 2012 National Clydesdale Sale – Karla Stoner reported that as of the 02/13 closing date for catalogued horses, 13 Shires were entered, with two others possible. Horses may still be entered up to two weeks before the sale, but will not be in the catalogue. There are also plans for an ASHA information and merchandise booth at the event. Everyone is encouraged to attend and buyers are needed. Having Shires included in a well known annual sale is a great opportunity and the potential for future growth was emphasized. Janet Long reported that DraftsforSale.com is giving free premium ads with pictures (including videos) for Shire sale entries. Todd Riedel reported that online bidding will be available for those who can not attend. There will also be an Education Day on Thursday before the sale and a lot of social events. Fred Topping recommended getting horses advertised as soon as possible. Having information on the horse available to potential buyers helps increase sales.

Open discussion of matters of interest to the membership – Dan Hubbell requested member input.

Brit McLin – Thanked Nan Osterhoudt for the excellent education day and offered a remembrance of the late Jay Cope who was instrumental in getting education days started because he felt strongly that ASHA should provide educational opportunities for the members at the annual meetings. Brit also commented that he felt ASHA had a real treasure in the new secretary and admonished the board to avoid the temptation to micromanage. He further commented that Stallion Inspection needs some serious rethinking as it can be a mine field.

Nan Osterhoudt - What sorts of issues/interests are coming from the membership to the board? What are members most interested in? Dan said the content and timeliness of the bulletin had been an issue, but that was resolved in 2011 when Leanne and Kim took it over and got things back on track. Todd said he had received the following questions from members before the meeting: what are we doing to interact with other Shire registries; are we looking at the gene pool for the breed – does it need to be addressed; can the Premier Points program be revised to be more fair across the country – if not consider dropping it; drop the Stallion Inspection program; change the annual meeting date and develop a plan for better marketing/branding of the ASHA and Shires. These will be discussed during the board meeting and referred to the relevant committees for recommendations. Some will require a by laws change (e.g. change of dates for the Annual Meeting).

Vicki McCaffrey – felt Shires are being recognized more favorably in the draft horse world. She complimented Education Day saying Nan has done the best job to date and brought in the most people. However, she was disappointed that more members at education day did not come to the members meeting.

Todd Riedel – felt there has been a lot of negativity in the past, but things are now more positive. A change to how can we help and what are the next steps? The Horse Illustrated ad has had a very positive effect. Calls and sales are picking up. We need to look at the long term now, 5-15 yrs. out for breed and organization survival.

Ken Knuth – The American Shire Horse Educational Foundation (ASHEF) – started off last year with \$7500 and has already sponsored Marion Young's two presentations at Education Day and a genetic study with Virginia Tech using pedigree analysis. In order to continue with other projects, more money will be needed. Ken would like everybody here today to donate something – any amount is welcome. The ASHEF Board is working to put something together to stimulate donations from the general membership and hopes to have a plan in the next 3 – 6 months so ASHEF can continue help Shires and ASHA with other projects.

Clark Jenson – Also thanked Nan Osterhoudt for a great Education Day and felt good education days need proper locations and facilities. The board should think of selecting locations for Annual Meetings that will enhance education day.

Sharon McLin – Felt Myrna's fresh eyes and lack of bias will be huge advantage to ASHA.

Butch Ruppert – announced that Horse Progress Days (HPD) would be in Clare, MI this year and the NW Michigan Draft Horse Club will have a booth. Would ASHA participate to represent Shires and share the booth? Karla Stoner felt this was a great idea and said HPD is the only event ASHA does to represent the working draft horse. Most everything else is shows and breeding. This event provides a lot of exposure for the breed. Todd Riedel agreed and has participated in these events with his Shires. Many spectators at HPD don't have any drafts yet so they are looking at all the breeds. Shires draw interest. They are different. It is an opportunity to showcase Shires as a working animal, not just an ornament. Dan Hubbell commented that the last time HPD was in MI, only Shires and Percherons had booths there. The other breed associations were not represented. The costs of the booth were split with the MI club and it worked out very well. This will be discussed under the proposed budget during the board meeting.

Fred Topping – commented that Marion Young had pointed out that there are quite a lot of differences in drafts used for showing and work. He also felt more people are looking at Shires and seeing their advantages.

Todd Riedel – This is part of marketing and rebranding ourselves to be well recognized and labeled. In the last 20 yrs. the Shire has not always been well recognized and often considered a lawn ornament. Shires can be versatile. We need to educate people to present their horses well when they take them out in public so better recognition is built.

Jennifer Cwaggenberg – Statistic for Belgians, Percherons and Clydesdales were presented at Education day. Can we see similar information for the Shires? This will be referred to the Statistics Committee.

Clark Jenson – The Education Day legal presentation raised concerns for him about continuing to allow school children and other groups to visit his farm to learn about Shires. The paperwork of release forms and liability issues are a real concern. Karla, Leanne and Todd recommended he check on his state Equine Limited

Liability Laws and with local lawyers specializing in equine law to determine his situation. Also check with your insurance company to determine necessary coverage. Dan Hubbell explained that the Equine Limited Liability Laws are a fairly generic template throughout the country. Most states have them, but check on your state's version.

Audrey-Lyn Stockton – thanked board members for the time and energy devoted to the secretary search and felt they deserved a round of applause. She also felt communication is appreciated and would like to see more emails to members to increase transparency of the board activities. She feels if email addresses are provided by a member it means they can be used to communicate with them. Review policies and by laws for any needed revisions to address this. Membership needs meeting agendas ahead of time to give them time to organize thoughts for discussion and to allow them to participate. Further, go back to more use of the committee system. It's a beginning place to get people involved and can serve as a training ground for future board members.

Karla Stoner asked if Audrey was receiving the email blasts coming through the internet. The board has been using this to communicate information to the members on meetings, agendas and other topics, although that could be further improved. Audrey said she is not and no one she has talked to in CO has gotten them.

Janet Long – email blast issue: email addresses for the blasts are taken off the website profiles. If you have registered an email address on the website that takes priority for email blasts, because most people keep that up to date. However, email addresses also come in from the secretary updates to the membership database, so there is information in two places. Email blasts could switch to using this list if it is more up to date.

Kim and Sharon said they are getting the email blasts to their personal email addresses (CO).

Dan Hubbell – the board has not heard from any of these people about the problem and requested Audrey to encourage them to contact the office or the board to address the issue.

Kim Murchison – We know that there are problems. Myrna and I are working very hard to update the list. Many email addresses in the office and on the studbook website ownership database do not agree.

Janet – Reason for differences: studbook ownership and membership databases may have different email addresses. Possible solution: When people change their addresses on the website, they may not change it with the office. She recommended sending an email to the secretary when someone changes their email address on the website. That way it can be cross referenced in the office and updated so the next membership data base update to the website will include it. This list will then be used for email blasts.

Karla – Noted that in the past, there were restrictions in the by laws on using email to communicate with members without their permission. The board will be reviewing that in the board meeting.

Vicky McCaffrey – Janet has solved the problem with updating the lists, it will be in the meeting minutes and Leanne will include another notice in the bulletin reminding members to be sure their email addresses are current. She disagreed with Audrey that there is not transparency for the board. Meeting minutes are on the website and other board member efforts have made it much better than the past.

Myrna Rhinehart – Members' section of the website could

be easier to get into, based on her experience with other organizations. She would also like to see a regular communication from the office/board on current topics under discussion, upcoming events, etc. While things have gotten better, there is still a long way to go.

Charity O'Dell – need to make sure the newsletter article updates are user-friendly.

Jennifer Cwagberg – What about mobile apps? Would they be beneficial? She would volunteer to write one.

Leanne Hoagland – need to really increase our technology communication, especially in social media and keeping up with cell phone access. While we may not all agree with it, mobile technology is here to stay and social media is a major communication tool.

Paul Tyrrell – as an example, he pulled up the ASHA Facebook page. There are currently over 600 users, including international, which is ~ double our membership.

Clark Jenson – while we need to keep up with this technology, make sure that we don't leave behind the members who don't have or use it. Many still rely on snail mail.

Todd, Leanne – torn on technology – still need snail mail. The board is trying to bring things forward while not leaving less technologically oriented members behind. Find a happy medium.

Vicky – using the bulletin, ask “If you don't have email, how can we contact you?” Is there a reasonable way to find out how many members do not have access to computers?

Leanne – check off form in bulletin? Myrna – add to yearly renewal reminders?

Todd – need to communicate with life members as well. They do not get renewal notices.

Dan – as the board, we ask the membership to read the Bulletin and get back to us. It is the official ASHA communication and goes out to all members. In response to Audrey's comments on committees, in 2010 several President's messages requested members to become involved by volunteering for committees. Only one or two people responded.

Katie Ruppert – volunteered to call some of the people who are not responding to renewal reminders and encourage them to renew. A personal contact may help.

Karla – a few calls did go out to members that didn't renew this year and they said they didn't get the postcards (overlooked in the mail?). Invoices may have a bigger impact.

Sharon – if postcards come back to the office, she followed up to get address changes.

Audrey – board members used to split up the membership list and contact members to create personal contact and find out what they were interested in. For dues reminders, invoices cannot be sent from Quick Books, due to the accrual accounting system. Work with Myrna on an alternative invoice and check by laws on this. Emily Cullison – did some research on people who didn't renew and compared that list of names to names in the studbook. Only a few were owners or breeders. Why would some members renew if they don't show or produce offspring? ‘What's in it for them?’ What do they get from the association? Phone calls would be more personal for non-renewing people and you could find out why they are not renewing. How can we change their mind?

Fred Topping – people have aged, moved, gotten rid of animals, died, so it is hard to track down some people. It is a problem for a number of horse organizations, not just this one.

Charity O'Dell – the military has “key callers” to help with a support network for families. To help out the board, a committee could be formed to contact other members for major items. She would volunteer to be on that committee.

Dan – we will follow up on that under committee discussions in the board meeting. The more that the board can get the membership involved in doing this type of thing, the better it is for the association.

Fred – recommended getting people for regions or states (depending on numbers of members in an area) so they can find out what people want and report back to the board. He would be willing to help.

Todd – Talking about this, we don't look at phone calls, etc. being part of a marketing program, but this is what we are going to be dealing with very soon. We want to grab people's attention to get a reaction or a response – advertising in the bulletin or what ever. All the ideas are good, but we need to bring it into a marketing plan so that we are consistent and branding ourselves to move forward in a positive manner.

Audrey-Lyn – need to advertise outside of the organization to look for new sources of income (e.g. outside advertisers for Bulletin). If each of us in the room can find one new resource outside the membership, it could be a big help. We can't keep coming back to the same sources.

Leanne – we are looking at that for the Bulletin and for the new issue of the Breeder's Brochure, possibly through package advertising deals.

Charity – great idea. What Leanne has been doing really makes me want to pick up the bulletin and read it. Thank you so much. She requested inclusion other draft horse related information in the Bulletin (e.g. how to subscribe to or renew the Draft Horse Journal, vendor lists for draft horse items, etc.). Would some of these vendors advertise in the Bulletin?

6. Adjournment - Dan requested a motion to adjourn if there was nothing else. *Audrey-Lyn Stockton moved to adjourn the Member's Meeting. Vicky McCaffrey 2nd. MC. Meeting adjourned at 10:05 QM CST.*

Dan restated the invitation to the members to attend the Annual Board Meeting following the break.



Committee Assignments:

Annual Meeting 2013

Kim Murchison – Chair thshire@sopris.net
Sharon McLin msbshire@sopris.net
Paul Tyrrell fourinhand@gmail.com
Myrna Rhinehart (ex-officio) secretary@shirehorse.org
Todd Riedel (ex-officio) traillightfarms@aol.com

All American

Danelle Kinney – Chair haugenhill@hotmail.com
Karla Stoner bloomforge@peoplepc.com
Janet Long janet@northeastshires.com
Jenny Cournoyer rollerjgirl@yahoo.com
Lindsay LaRiviere lindsay.lariviere@telus.com (CSHA rep)
Myrna Rhinehart (ex-officio) secretary@shirehorse.org
Todd Riedel (ex-officio) traillightfarms@aol.com

Breed Shows

Vicky McCaffrey (Chair) oxkill@capital.net
Angela Cook acookin@hotmail.com
Jenny Cournoyer rollerjgirl@yahoo.com
Jennifer Cwagenberg jennifercwagenberg@gmail.com
Leanne Hoagland bsshires@midrivers.com
Danelle Kinney haugenhill@hotmail.com
Kim Murchison thshire@sopris.net
Nanette Osterhoudt johns503@hotmail.com
Todd Riedel traillightfarms@aol.com
Turie Sorrell tsorrell@kingcon.com
Karla Stoner bloomforge@peoplepc.com
Janet Long (ex-officio) janet@northeastshires.com
Myrna Rhinehart (ex-officio) secretary@shirehorse.org

Education

Kim Murchison (Chair) thshire@sopris.net
Clark Jenson clarkjenson@abbnebraska.com
Karla Stoner bloomforge@peoplepc.com
Leanne Hoagland bsshires@midrivers.com

Myrna Rhinehart (ex-officio) secretary@shirehorse.org
Todd Riedel (ex-officio) traillightfarms@aol.com

Finance

Kim Murchison (Chair) thshire@sopris.net
Sharon McLin msbshire@sopris.net
Audrey-Lyn Stockton sventures@yahoo.com
Karla Stoner bloomforge@peoplepc.com
Myrna Rhinehart (ex-officio) secretary@shirehorse.org
Todd Riedel (ex-officio) traillightfarms@aol.com

Marketing (combining Advertising, Trade Shows, Bulletin, Website and Merchandise)

Co-Chairs: Janet Long janet@northeastshires.com
Leanne Hoagland bsshires@midrivers.com
Karla Stoner bloomforge@peoplepc.com
Myrna Rhinehart secretary@shirehorse.org
Todd Riedel (ex-officio) traillightfarms@aol.com
Co-Chairs to formulate a framework and contact members interested in being on the committee in June.

Membership Services

Nanette Osterhoudt – Chair email@axeholmeshire.com
Charity O'Dell charityodell@gmail.com
Myrna Rhinehart (ex-officio) secretary@shirehorse.org
Butch Ruppert fruppert@netonecom.net
Todd Riedel (ex-officio) traillightfarms@aol.com

2012 Nominating

Karla Stoner - Chair bloomforge@peoplepc.com
Janet Long - janet@northeastshires.com
Richard Cameron – rockinrunawayfarms@hotmail.com
Burt Stanly – showmeshires@wildblue.net
Dawn Wikel – shires99@msn.com
Todd Riedel (ex-officio) traillightfarms@aol.com

Printed Studbook

Paul Tyrrell – Chair fourinhand@gmail.com
Janet Long janet@northeastshires.com
Myrna Rhinehart secretary@shirehorse.org
Todd Riedel (ex-officio) traillightfarms@aol.com

Rules and Editing

Gene McCaffrey – Chair oxkill@capital.net
Dan Hubbell – dan@hubbelllawoffice.com
Sharon McLin – msbshires@sopris.net
Karla Stoner bloomforge@peoplepc.com
Melissa Restifo – melissa.restifo@gmail.com
Myrna Rhinehart (ex-officio) secretary@shirehorse.org
Todd Riedel (ex-officio) traillightfarms@aol.com

Statistics

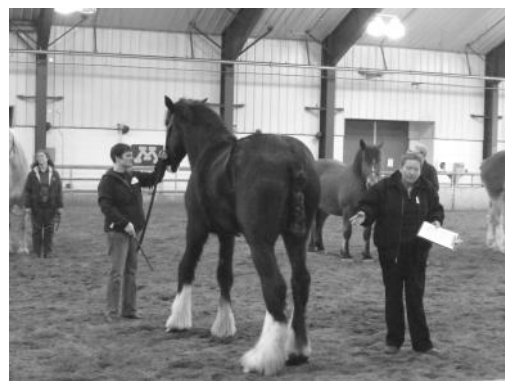
Paul Tyrrell – Chair fourinhand@gmail.com
Gene McCaffrey oxkill@capital.net
Vern Stark skfinc@yahoo.com
Leanne Hoagland bsshires@midrivers.com
Myrna Rhinehart (ex-officio) secretary@shirehorse.org
Todd Riedel (ex-officio) traillightfarms@aol.com

Voluntary Stallion Inspection

Paul Tyrrell – Chair fourinhand@gmail.com
Vicky McCaffrey oxkill@capital.net
Clark Jenson clarkjenson@abbnebraska.com
Janet Long janet@northeastshires.com
Myrna Rhinehart (ex-officio) secretary@shirehorse.org
Todd Riedel (ex-officio) traillightfarms@aol.com

Youth

Danelle Kinney - Chair haugenhill@hotmail.com
Melissa Restifo Melissa.restifo@gmail.com
Charity O'Dell charityodell@gmail.com
Myrna Rhinehart (ex-officio) secretary@shirehorse.org
Todd Riedel (ex-officio) traillightfarms@aol.com



WOULD YOU LIKE TO RUN : FOR THE BOARD OF DIRECTORS?

The Nominating Committee is looking for candidates to run for five board positions that will be vacated December 31, 2012. A Board member is elected to a four-year term and accepts the responsibility of participating in key decisions that affect the way the ASHA functions. They are expected to attend one meeting a year at their own expense, regardless of where in the U.S. it is held, and be willing to take part in quarterly board teleconferences. Board members also serve on committees and volunteer for other duties as needed on behalf of ASHA. ASHA needs new people and fresh ideas to keep moving forward into the future. If you love Shires, want to promote and preserve the breed and like working with a diverse group of people as a team, give serious consideration to volunteering your time and talents to the Board.

Anyone interested in running is requested to notify one of the committee members listed below in writing or by email, before July 20, 2012. Complete nomination guidelines and election procedures are posted on this page, and in the members section of the ASHA web site. We encourage you to contact any Nominating Committee member or board member if you have questions about the position.

Karla Stoner, Chair 8401 Peters Road Frederick, MD 21704 Phone: (301) 874-3250 bloomforge@peoplepc.com	Richard Cameron 970 Lariat Lane Ellensburg, WA 98926 Phone: 509-312-9342 rockinruna-wayfarms@hotmail.com
Janet Long 34 Howards Lane Epsom, NH 03234 Phone: (603) 930-6975 janet@northeastshires.com	Burt Stanley 488 Hwy AD Mountain Grove, MO 65711 Phone: 417-926-1170 showmeshires@wildblue.net
Dawn Wikel 65802 County Road 665 Paw Paw, MI 49079 Phone: (816) 547-6972 shires99@msn.com	

PROCEDURAL GUIDELINES FOR NOMINATIONS AND ELECTIONS TO ASHA BOARD OF DIRECTORS

- I. The Nominating Committee shall be in place by the last day of March of the election year.
 The Committee shall consist of two Board members and three members at large, all in good standing and eligible to vote as defined by the By-Laws.
 Members of the Committee are NOT eligible to run as candidates.
- II. In the spring newsletter shall be printed:
 The nominating process.
 The name of the chair and committee members with their postal address, e-mail address and phone number(s).
- III. The final ballot shall be of sufficient number of candidates to fill the Board positions to be elected plus at least one.
 Only members in good standing and eligible to serve as defined by the By-Laws are eligible to run.
 The Nominating Committee may solicit volunteers to become candidates for the Board. Members wishing to run must contact a committee member **IN WRITING** by USPS or by e-mail by July 20.

By August 1, all candidates will receive a short form requesting the following information:

Name, address, phone number, and e-mail address.

A statement of ability and commitment to attend membership and board meetings and do committee work should they be elected.

A brief statement of strengths and contributions candidates can bring to the board (200 words max)

Brief responses to a set of questions posed by the committee and regular members.

The forms shall be completed and returned to the Chair postmarked no later than August 20. Forms postmarked after August 20 will not be considered.

1. The Chair shall forward copies of the completed forms to all committee members by August 30.

All completed forms will be sent to the Secretary with the final slate.

The Committee will confirm eligibility, review the written responses of all candidates and determine the final slate of candidates. The Chair will then notify all committee members, board members, and the ASHA Secretary of the final slate by September 10.

The final slate shall be printed in the fall newsletter with the candidates' names, postal and email addresses, phone number(s) and personal response forms.

There shall be no maximum number of candidates.

IV. The ballot shall be sent to all eligible voting members, as defined by the By-Laws, by first class mail no later than October 31. No ASHA correspondence unrelated to the election shall be included in this mailing.

The candidates shall be listed alphabetically, by last name, on the ballot.

Each ballot shall include a return envelope with the selected Notary Public's name and address as addressee and return address. The envelopes shall also be clearly marked **BALLOT ONLY - Do Not include any other ASHA correspondence.**

V. The mailed notice will also include the number of candidates to be elected, the deadline for return of ballots and the date, location and time the count is to take place.

A. Any ballots postmarked after the deadline date will not be counted.

B. One week after the deadline stated in the notice, the notary shall present all ballots, unopened, to the ASHA Secretary and any other election clerks or assistants to verify all are sealed. Following this verification, the Notary will open all envelopes **in private** and verify voter eligibility from the list of eligible members provided by the ASHA Secretary. The Notary will then remove the member information from the ballot, placing the ballots in one container and the member information in another container.

C. When verification is complete, the ASHA Secretary and any assistants shall tabulate all valid ballots in the presence of the Notary.

D. In the event a situation arises where the ASHA Secretary is unable to take part in the counting of the ballots, the President may appoint a person or committee to do so, as defined by the By-Laws.

E. Upon finishing and verifying the outcome, the Secretary shall immediately notify the Nominating Committee Chair and the President of the results.

The Chair shall notify the Committee, the candidates, and the board members of the results as soon as possible.

The results must not be released to anyone else until December 21 or until all of the above have been notified, which ever comes first.

In the case of a tie, the Chair will contact the candidates involved. If one wishes to withdraw, the other shall be the new board member. If both wish to continue, their names shall be placed in a container and a Notary Public shall draw the name of the winner.

The new board members shall be announced in the winter newsletter.

Adopted March 15, 2006, Modified March 28, 2008, March 14, 2012

American Shire Horse Association
2012 Approved Budget (2/19/2012)

American Shire Horse Association
Profit & Loss Comparison 2011 vs. 2010

		Total	
		Jan - Dec 2011	Jan - Dec 2010 (PY)
Income	Total		
Advertising Special Projects	3,400.00		3,960.00
Bulletin/ Magazine	1,300.00	1,390.00	154.75
Equine Affaire	400.00	1,070.00	1,650.00
Interest Income	75.00		420.00
Membership Dues	10,720.00	750.00	100.00
Merchandise Sales	2,000.00		30.00
On Line Stud Book Revenue	1,700.00	85.74	111.58
Raffle Sale Proceeds	1,000.00	200.00	600.00
Registry Income	22,300.00	11,515.00	12,400.00
Shires4Sale.com Revenue	450.00	2,202.39	1,270.14
Total Income	\$43,345.00	1,864.00	1,656.00
Gross Profit	\$43,345.00	1,389.98	1,005.00
Expenses		23,484.00	18,675.00
Advertising	2,000.00	70.00	35.00
Bank Charges	800.00		
Board Expenses	1,200.00	239.20	179.20
Dues & Subscriptions	750.00	583.75	
Finance Charge	10.00		
Horse Show Costs	2,800.00		
Insurance	1,200.00		
Legal & Professional Fees	500.00		
Mailings to members	6,500.00		
Merchandise Product Cost	1,500.00		
Office Expenses & Supplies	1,500.00		
Payroll Tax Expense	1,000.00		
Postage	1,199.98		
Promotional	5,650.00		
Registry Expenses	4,300.00		
Secretary Wages	9,600.00		
Taxes & Licenses	50.00		
Telephone Expense	1,000.00		
Transition costs	2,000.00		
Travel	2,500.00		
Youth Awards	50.00		
Total Expenses	\$46,109.98	\$44,844.06	\$42,246.67
Net Operating Income	\$ -2,764.98	\$44,844.06	\$42,246.67
Net Income	\$ -2,764.98	\$44,844.06	\$42,246.67

		Total	
		Jan - Dec 2011	Jan - Dec 2010 (PY)
Income			
Advertising Special Projects			3,960.00
Bulletin/ Magazine		1,390.00	154.75
Contributions/Donations Income		1,070.00	1,650.00
Education Day Proceeds			420.00
Equine Affaire		750.00	100.00
Horse Show Income			30.00
Interest Income		85.74	111.58
Legal Defense Fund		200.00	600.00
Membership Dues		11,515.00	12,400.00
Merchandise Sales		2,202.39	1,270.14
On Line Stud Book Revenue		1,864.00	1,656.00
Raffle Sale Proceeds		1,389.98	1,005.00
Registry Income		23,484.00	18,675.00
Service/Fee Income		70.00	35.00
Shires4Sale.com Revenue		239.20	179.20
Uncategorized Income		583.75	
Total Income		\$44,844.06	\$42,246.67
Gross Profit		\$44,844.06	\$42,246.67
Expenses			
Advertising		2,773.00	1,888.00
Bad Debts		240.17	
Bank Charges		748.42	808.10
Board Expenses		1,726.60	1,528.63
Dues & Subscriptions		768.00	
Education Day Cost			279.09
Finance Charge		28.44	
Horse Show Costs		4,055.30	4,250.95
Insurance		154.00	1,889.00
Legal & Professional Fees		2,000.00	-3,574.71
Mailings to members		5,416.32	7,358.53
Merchandise Product Cost		328.72	446.87
Merchandise Shipping Costs			16.52
Miscellaneous Printing Cost (deleted)			467.98
Office Expenses & Supplies		2,370.44	1,012.09
Payroll Tax Expense		547.87	918.00
Postage		1,199.98	501.76
Promotional		1,955.50	1,831.00
Registry Expenses		4,112.00	2,816.00
Secretary Wages		6,850.00	12,000.00
Taxes & Licenses		55.00	
Telephone Expense		601.31	1,730.63
Transition costs		111.94	
Travel		769.93	
Uncategorized Expense		10.01	
Total Expenses		\$36,822.95	\$36,168.44
Net Operating Income		\$8,021.11	\$6,078.23
Net Income		\$8,021.11	\$6,078.23

American Shire Horse Association
Balance Sheet Comparison 12/31/2011 vs. 12/31/2010

	Total	
	As of Dec 31, 2011	As of Dec 31, 2010 (PY)
ASSETS		
Current Assets		
Bank Accounts		
Alpine Bank Checking #141402 1818	10,708.54	
Alpine CD #46156	15,226.46	
ASHA BB&T 0005125510576	2,950.88	7,752.33
BB&T Life Member Savings	1,121.09	
First Reliance Business Money Market 1700025392	0.00	8,039.56
First Reliant Life Member CD	0.00	8,292.25
PayPal	140.00	
Total Bank Accounts	\$30,146.97	\$24,084.14
Accounts Receivable		
Accounts Receivable	1,103.00	285.17
Total Accounts Receivable	\$1,103.00	\$285.17
Other Current Assets		
Inventory	3,088.25	3,088.25
Undeposited Funds	690.00	0.00
Total Other Current Assets	\$3,778.25	\$3,088.25
Total Current Assets	\$35,028.22	\$27,457.56
TOTAL ASSETS	\$35,028.22	\$27,457.56
LIABILITIES AND EQUITY		
Liabilities		
Current Liabilities		
Other Current Liabilities		
Payroll Tax Payable	8.55	459.00
Total Other Current Liabilities	\$8.55	\$459.00
Total Current Liabilities	\$8.55	\$459.00
Total Liabilities	\$8.55	\$459.00
Equity		
Retained Earnings	26,998.56	20,920.33
Net Income	8,021.11	6,078.23
Total Equity	\$35,019.67	\$26,998.56
TOTAL LIABILITIES AND EQUITY	\$35,028.22	\$27,457.56

Notes to accompany financial statements, 2012 annual meeting:

Balance sheets –

Funds have been largely consolidated (and will be further consolidated) into three main accounts: checking (main operating fund), life member money market, and CD (operating fund reserve). Around March 1, when we are sure that all checks have cleared, paypal has been switched to Alpine, and Myrna has received Alpine Bank checks, we will close the BB&T account. Undeposited funds are checks that have been received and recorded as income but not yet deposited to the bank.

The actual value of inventory has not been adjusted yet; apologies to Karla who sent the inventory value out in January. We need to review how we account for inventory and merchandise sales. There will be a reduction in this number when we adjust.

Payroll is now set up to be processed electronically with direct deposit so Myrna doesn't have to write her own paycheck.

The difference between the net income on the balance sheet and that on the P&L for the first 6 weeks is because I printed the P&L on the 15th and the balance sheet on the 16th – I know better!!

P&L 2011 compared to 2010 –

Although Audrey-Lyn made a lot of progress, there are obviously details we couldn't clarify. E.g. on the Membership Dues line, there's \$495 from this year and \$8,120 from 2010 that we couldn't classify as 1-, 2-, or 3-year or life. Similarly *all* the registry income from 2010 is listed as Registrations. The uncategorized income at the bottom we didn't think we should guess about.

Advertising special projects 2010 is income for brochure. Mailings to members 2010 includes \$3,764 in printing costs for brochure.

Donations 2011 almost entirely national show trophies. Donations 2010 not defined at all.

Merchandise sales both years artificially high, does not allow for cost of goods sold. Will adjust.

Dues and subscriptions: ADS, USDF, NPLC and ?? Legal and professional 2010 – out of pocket \$900 (TAP), write-off of legal finance chgs -\$4474.71

Office supplies 2011 includes laptop ~ \$1200.

Postage – this is for items not broken out as mailing to members. There is an item for \$270.60 on 1/31/11 that might be a newsletter mailing but we can't tell.

Registry discounts – only from 8/1/11 so there were extensive discount prior to that; we think they were just entered as smaller registry fees.

Transition costs 2011 mainly shipping. (Most of costs will occur in 2012.)

Travel costs 2011 are for Karla to Horse Progress Days and Audrey-Lyn to Silt in August.

P&L YTD 2011 compared to 2012 –

Horse Show income is Canadian share of all-NA ballot printing costs.

Horse show costs is negative because Jessica returned part of the funds she had received for LA.

Let us know if you have questions.

AS I SEE IT:

To those with a heart for the Shire:

Those that missed the annual board meeting, this past February, changes came to the board as Dan Hubbell stepped down from the president's position. This left the board with the need to follow the rules and bylaws to fill the open position. The filling of the president's office could only be done through board appointment, to finish Dan's presidential term. I was appointed to this office until February 2013 at the next annual board meeting.

There is no doubt that I will find myself more than challenged by the petty, as well as the complex problems of this association. As I promised, when running for the board, I am here to serve the membership as a whole, not a select few. Another note for all; as president, I hear people say 'You can do what you want, it is your association'. This statement just sits wrong with me. It is YOUR association, and you, the membership, put me here to carry out a balanced input from the membership for the best interest of the American Shire Horse. When I was just a board member, the general members called me with issues and ideas, but now as president, I only hear from less than a handful of longtime members. How can I know what is happening if I am shut out from the members by your silence? Some members say 'The BOD does not care', and in turn start rumors and cause trouble behind the backs of those that give great amounts of time and of their own finances. It is sad that some folks just want to destroy, but to those that want to build a great organization, step up with me to help rebuild an old registry that can lead the industry into the future. Bring your thoughts to the board, and not just one board member, but two or more. It is time to move forward toward a bright future.

It has been brought to my attention that social media groups, like Facebook, have great power. Here recently, a Facebook group went overboard. They attacked the Shire, not ASHA, by their actions. Their desire is to have one person forced onto ASHA for professional services. It is interesting how the media gets us to respond. ASHA is not looking for folks that only want to destroy and take control. For the record, ASHA has been working with those that want to be involved, even the person that has been a center topic on a Facebook group. It is time to move on, this is a new age for ASHA. To those that are discontent at this organization, I challenge you

to get involved. Please let the BOD know your concerns, instead of hiding and spreading rumors. This is a volunteer organization. We do not question your talents, we just need able and willing members.

The National Clydesdale Sale has brought much controversy from the Shire involvement. It appears some can only see the negative side of something good. The sale was a success, and this will be noticed by the transfers of the horses involved at the sale. We (anyone involved in Shires) should be thanking the courageous few that were willing to pioneer new territories for all of us. As I watched Clydes and Shires sell from ringside, I was impressed that the Shire sold well compared to 'like type' horses at the sale. Yes, some Shires did 'No Sale' in the ring. This is common at sales in this economy. What I found surprising at the end of the sale, was that many folks came back to the stalls and talked private treaties on most of the Shires that 'No Sale'd'. (Yes, this was allowed, and encouraged, since the no sale bid on each no sale'd horse was assessed 4% of the last bid.) Could the sale have gone better? Yes! We all would have wanted to see a Shire be a sale topper, but that will take time to develop, and a commitment from those that love and use the Shire horse. For those that stood up to the plate, sellers and buyers, in belief of the Shire horse, thank you. A special thank you to the following: Robert Taylor, Janet Long, Cindy TEMAAT, the ASHA booth personnel and the many people that worked behind the scenes.

In closing, remember why all of us, from so far away, joined together, it is for the Shire. I spent my Sunday afternoon with Emily starting Shires in harness. Yep, they are worth every bit, and then some.

Your President,

Daniel Todd Riedel



TROYER CARRIAGE COMPANY



~Parts~
~Accessories~
~Craftsmanship~

*Proud Sponsor of
ASHA Cart Raffle*

Handcrafted in the USA

www.troyercarriage.com



TROYER CARRIAGE COMPANY, INC.

280-A North Village Dr., Shipshewana, In 46565

(260) 768-7135 Fax: (260)768-7137

The American Shire Horse Association est. 1955



Myrna Rhinehart Secretary

P.O. Box 408 ~ Lake Delton, WI 53940

Phone: 888-302-6643

email: secretary@shirehorse.org

www.shirehorse.org