

The American Shire Horse Association

est. 1885



FALL 2012 BULLETIN

A Message From Your President:

Welcome once again,

Autumn is heavy upon us with welcomed rain for fall pastures, showing is all but over, and I find myself going to work before sunrise again. All this reminds me of the special needs for my Shire herd going into winter. Teeth, deworming, young stock training, and feed supply in good order (this year has been tough).

As I think of my fall checklist, up comes ASHA with some important items. Election time for the BoD, updates to our bylaws, and preparing for the annual meeting in 2013, to just name a few. A lot is happening behind the scenes in ASHA, and in the draft horse industry. The voluntary work and belief in the Shire horse goes deep, and your BoD is out there working for you. This brings us to the slate of candidates for election this year. Call the candidates, talk to them, talk to your current BoDs. This is your opportunity to make yourself known and make the best vote for the Shire Horse, not just someone you have seen or know their name. This is a critical time in the industry. Clean up of our bylaws comes into play from time to time, please read them and talk them over before voting. We need a clean set of rules for a sound format to handle business day to day for you.

I challenge all to be part of making a difference in this breed and organization, from short term help with committees, shows or just being out there doing what you love to do with your horses. Make a difference, if you don't, no one else will. It takes a strong few to lead, and the special ones do it with a joy to serve.

In closing, I would like to thank the board members who's terms are coming to a close, for their commitment to this breed and this organization. Thank you for all you have sacrificed and given so freely.

Todd Riedel

President, American Shire Horse Association
traillightfarms@aol.com

Board of Directors

Todd Riedel ~ President

6168 Greenwich Rd., Seville, OH 44273
(330) 419-0346 traillightfarms@aol.com

Karla Stoner ~ Vice President

8401 Peters Rd., Frederick, MD 21704
(301) 874-3250 bloomforge@peoplepc.com

Kim Parrington- Murchison ~ Treasurer

0185 CR 225, Rifle, CO 81650
(970) 625-1142 thshire@sopris.net

Leanne Hoagland ~ Editor

PO Box 95, Glendive, MT 59330
(406) 687-3004 bsshires@midrivers.com

Dan Hubbell

400 8th St., Traverse City, MI 49686
(231) 947-5600 dan@hubbelllawoffice.com

Danelle Kinney

21847 310th St., Red Wing, MN 55066
(651) 380-9600 haugenhill@hotmail.com

Janet Long

23 Howards Lane, Epsom, NH 03234
(603) 930-6975 janet@northeastshires.com

Gene McCaffrey

267 Sholtes Rd., Schoharie, NY 12157
(518) 872-1295 oxkill@capital.net

Paul Tyrell

PO Box 320, Upperville, VA 20185
fourinhand@gmail.com

Secretary

Myrna Rhinehart ~ Secretary

P.O. Box 408 ~ Lake Delton, WI 53940
Phone: 888-302-6643
email: secretary@shirehorse.org

The Editor's Note:

Hello Members:

As we welcome Fall also comes the close to our summer fun.. Many of us have made wonderful memories with our Shires, friends and families.

Fall is a beautiful time of year. Leaves change to a rainbow of colors across the country, foals begin their weaning process, while our broodmares ready for the winter to come. Hay yards are being filled with large winter stores of hay .

This Fall/ Winter will bring about another ASHA BOD election. In this bulletin you will find a slate of individuals who have considered filling the five open positions on the BOD. I encourage you to contact as many of these candidates as possible. Share your concerns for the Shire, ASHA and most of all ask important questions of each one. In the end, VOTE. Let your voice be heard and make the most of your voice as a member!

Congrats to all who showed your horses and supported the breed through presenting good quality horses in the show ring. Thank you for your time and energy.

Thank you to all of you who shared your Shires with the world and public through local events and activities. Thank you to all of you who have written and published the Shire in recent articles and publications! Because of all these efforts the Shire has had one of the best years for exposures!

Thank you to all who has shared information and pictures in our publication, please continue to share and send us information.

Remember your All-North American Entries.

Leanne

(406) 687-3004
bsshires@midrivers.com



ASHA Fee Schedule Changes effective June 1, 2012

(postmark or online payment)

At the 2012 ASHA Annual Meeting, the board adjusted some ASHA membership and registration fees for the first time in several years. While domestic annual memberships remain the same, foreign address annual memberships will be \$65 for one year, \$120 for two years, and \$160 for three years. Foreign address Friends of the Shire are \$40. These increases cover additional foreign mailing costs.

Corporate memberships are available to corporate farms, LLCs, and similar entities at \$275 for five years. The entity EIN and the notarized signature for the authorized signer on behalf of the entity must be furnished to ASHA. Horses can then be owned by the entity.

Life memberships are \$800 or \$175 per year for five years. Foreign address life memberships are \$1000 or \$215 per year for five years.

Prefix registrations are \$50 and are available to current ASHA members only. Leases are \$40 each time the ASHA office processes a lease.

Duplicate (replacement) registration certificates are \$40. Either original papers (if requesting a correction) or a notarized statement about the loss of the original must accompany the request and fee for duplicate papers.

Blood type-to-DNA conversion is \$40. Five-generation pedigrees are \$10 when ordered with a registration, \$20 when ordered separately.

Registrations are \$100 up to 6/1 of the yearling year, \$200 after 6/1 of the yearling year and before 6/1 of the two-year-old year, and \$400 after that. (Geldings any age are \$100, and all registration fees are double for non-members.)

Transfers are \$40 for members and \$80 for non-members.

**A complete fee schedule is available at
www.shirehorse.org**

Need More Information or Assistance?

Contact The Secretary

Office hours are 9am to 3pm CDT Tuesday, Wednesday, & Thursdays.

Myrna Rhinehart Secretary

American Shire Horse Association
P.O. Box 408 ~ Lake Delton, WI 53940

Phone: 888-302-6643

email: secretary@shirehorse.org

www.shirehorse.org

Secretary's Report –

Myrna Rhinehart

From the Book of Numbers so far in 2012:

Registrations – 101 (69 mares, 30 stallions, 2 geldings)
 Transfers – 132 (86 mares, 31 stallions, 15 geldings)
 Pending Registrations – 15 waiting for hair samples
 Current Membership – 319 (103 Life Members)

Some thoughts to help make your ASHA experience better:

Make sure your paperwork is filled out completely.

If not, your paperwork will *surely* be delayed.
 Paperwork not completed will be returned. Some common mistakes:

- No date of transfer listed
- No signature(s)
- Signatures from wrong people (i.e. new owner of a stallion, not the owner at the time of service).
- No payment included. We will not process paperwork without the payment.

Get your registrations in on a timely basis. Don't wait until you *need* them to get them done. Invariably, there will be some glitch that won't make the process seamless (i.e. backup at the DNA lab, need DNA conversion on the mare, holiday mail, etc.) On a seamless registration, we can usually process the registration within two weeks, but it can take a month or more if problems arise, and you may not be aware of the issues until it arrives in the office. Allow for at least a month to process a registration (pending your timeliness in sending in your hair sample), and when it arrives sooner, you will be pleased!

Transfer your horses ASAP, especially with breeding stock. Outdated paperwork creates legwork and delays in registrations for foals. Look at registration papers of a sale horse to see if the seller is the current owner *before* you buy. If not, there may be *major* delays and cost in processing the paperwork.

We have a policy not to get involved in issues between buyer and seller. We need to have the proper paper trail to process paperwork. Ask yourself, "Is this an ASHA issue or a legal system issue?"

Use the horse's name when communicating with the office about the status of your horse's paperwork. Asking "How's my paperwork coming?" is too vague to answer easily and requires either additional questions from us or research on our part to figure out which horse you are referring to.

If you are unsure about something, ask! We are here to help make your Shire experience more pleasant!

HOW TO: Find Information on ASHA Shows on the Website

Go to ASHA's website - www.shirehorse.org

When the home page appears, there is a line of menu items just under the mast-head at the top of the page.

'Shows' is in the center of that string. If you place your cursor over 'Shows', a menu pops up with the topics listed below. Clicking on a topic will take you into that area. A description of what is included under each topic appears under it.

Upcoming Shows

Scroll down the page until you get to the show you are looking for. Each show is listed as a Regional, Local or National. Coordinator contact information, website for the show, dates, premium book information, judges, closing dates for entries, lodging information and other details may be provided. If it is early in the year, some information may not yet be available. Check back for additional details.

Show Results

Results of ASHA shows from 1996 to the present
 Click on the small arrow to the left of 'Select Show' to drop the list of shows. Scroll down the list to the show you want results for and click on it to highlight. Then click on 'Select Show' for those results. You can also export the results to a word document by clicking on '[Click Here](#)' just under the 'Select Show' button.

Point Results

Premier points standings for 2008 to the present
 The topic opens on current year standings. Previous years may also be selected
 Show and class details for each horse may also be viewed by selecting those options

All North American Entry Form

Entry form and rules for the Draft Horse Journal program

SAC

(Shire Alternative Competition Program started in 2010)
 Rewards Shire and Shire sport horse owners for participation in non ASHA Shows or competitions and activities other than shows (competitive trail rides, Pulls, etc.)
 Explanation of the program, entry form and rules and list of awards and pictures

USDF (United States Dressage Federation)

Adequan™ All Breeds Awards
 Explanation of awards and link to USDF website for more information
 Copy of June 2012 USDF Connection magazine breed of the month article on Shires

Show Eligibility Rules

Shires must meet these rules in order to show in ASHA sponsored shows

Hints for Showmanship

(Small arrow to the right drops a sub menu for **Etiquette** and **Youth Guidelines**)
Etiquette - how to properly prepare and show your Shire at halter
Youth Guidelines - to assist youth in properly preparing and showing Shires

ASHA Show Guidelines

Outline for the American Shire Horse Association Board of Directors, Show Committee (and sub-committees) and the general membership. Set up to help promote the Shire horse through shows and consistent showing practices. It establishes national and regional shows and procedures to be followed at these shows. It creates a method of coordinating Shire exhibitor and management interests at shows and provides recommended responsibilities of the show exhibitor.

ASHA Points System

Explanation of the Premier Points and Horse of the year Program

Advertising Rates:

Support the Shire and Advertise at the Same Time!

We invite you to advertise with us each quarter. There will be two ad sizes available with the option of a text ad in the Breeder's Directory or in the classified section. We will require that all ads be sent in Jpeg or picture format and be camera ready. If you need design help contact one of the editors and we will get you in touch with someone who can help you. At this time all ads are black and white.

***** Your best deal is the Four Issues. You pay for three and get one free!**

****At this time we are not taking cover ads- if the Bulletin expands to that point we will put the inside of both the back and front covers up for purchase.**

*** Classified Ads must be submitted in writing and renewed each issue.**

Contact: Leanne Hoagland bsshires@middrivers.com
406-687-3004 (H)/ 406-939-1263(C)

<u>Ad</u>	<u>One Issue</u>	<u>Four Issues</u>
5 X 7 Inch Landscape	\$100	\$300
3 3/4 X 5 Inch Portrait	\$75	\$200
Breeder's Directory Text Only <i>30 Characters per line including spaces. Six Lines of text total</i>	\$35	\$110
Text Only Classified Ad <i>30 Characters per line including spaces. Six Lines of text total</i>	\$10.00 Per Ad Per Issue	N/A

<u>Newsletter</u>	<u>Estimated Mail Date</u>	<u>Ad Copy Due</u>
Winter	January 15	December 1
Spring	April 15	March 1
Summer	July 15	June 1
Fall	October 15	September 1



We Want to Hear from You- THE MEMBERSHIP:

In the 2011 Bulletin we have a new section called "Meet the Membership". In order to make this section the best it can be, we need your input as a member. There are two parts to this section of the bulletin. Details for each section are listed below. The third and final way you can take part in the Bulletin is by advertising with us:

Individual Member Highlight

We will highlight a few members in each bulletin. Below are several questions we would like to have you answer and return to us with a picture to print with your answers to the questions.

Questions to answer: (About 300 Words)

- 1) Name and business name if any
City and State
Email address/ Phone if you want
Family
Prefix
- 2) What is your background in horses and how did you get into Shires
- 3) Shires Owned:
- 4) What do you do with your horses?
- 5) What are your future goals with your horses?
- 6) What would you like to see in the future for / from ASHA?

Member News

Send us pictures or small write ups (paragraph to a few sentences) of what you are doing or is interesting with you and your Shire horses.

- Promotional
- Just for fun
- Shows
- Pulls
- Trade shows
- Awards and honors

Contact YOUR Editors for More Info!!

Leanne Hoagland

(406) 687-3004
bsshires@middrivers.com

Kim Mutchison

(970) 625-1142
thshire@sopris.net

*** These sections will vary in size due to submissions and space available.*



REMEDY FOR "SCRATCHES"

by Heather Smith Thomas

Published in the January 2001 Issue of *Anvil Magazine*

"Scratches" is a term that refers to a skin problem on the lower legs of horses, caused by a fungus (and sometimes complicated by bacteria). The affected area becomes crusted, scabby and thickened, creating bumps and sometimes open sores. In severe cases the affected skin may ooze or the whole lower leg may swell, and the horse may become lame. This skin condition generally affects unpigmented skin (the areas of white leg markings) more readily than dark skin, since the unpigmented skin is not as tough-and more apt to chaff and scrape, opening the way for infection.

Scratches is a dermatitis, or inflammation of the skin, and the most common cause seems to be the fungus *Sporotrichum schenki*. Some horses seem to be more susceptible than others, just as some seem more vulnerable to other fungal infections such as ringworm and girth itch. The fungus lives in organic matter and enters through breaks in the skin when the horse walks through contaminated pastures or muddy, swampy areas.

The dermatitis that results is basically an inflammation of the deeper layers of the skin, sometimes involving the blood and lymph vessels. The most common site of inflammation is the pastern and fetlock area, often in the heel and back of the pastern where the foot bends. The involved skin becomes warmer, reddish and thickened. Then the skin surface becomes scabby and cracked, and if the condition is not treated it usually becomes badly cracked and oozing and spreads to include larger areas. Infection may also spread to the inner tissues and is sometimes complicated by bacterial infection as well. The thickened skin may come off, leaving bare spots covered with rough skin, or raw areas.

Traditional treatments for scratches were astringents like methylene blue, iodine mixed with glycerine, or ointments made with zinc oxide, nitrofurazone and steroids. But a better treatment, recommended by several veterinarians, is a mix of nitrofurazone, DMSO and thiabendazole (a cattle wormer that is also a good fungicide).

Thiabendazole cattle wormer paste is hard to find anymore, however (no longer being sold by most veterinarians or mail order livestock supplies because newer drugs have become more popular), so the horsemen can substitute any of the other benzimidazole dewormer drugs, found in horse paste wormers. Some of these are fenbendazole (marketed as Safe-Guard or Panacur), cambendazole, oxybendazole (marketed as Anthelcide EQ), oxfendazole (trade name Benzelmin) and mebendazole.

The area on the horse's leg to be treated should first be scrubbed thoroughly to remove all dirt, then the mixture can be applied to the affected part of the leg. The mix should be one part nitrofurazone ointment (an antibiotic salve), one part dewormer paste containing thiabendazole or any of the other benzimidazoles, and one part DMSO. These ingredients can be obtained from a veterinarian.

The DMSO (dimethyl sulfoxide) helps reduce swelling and inflammation, and also helps the fungicide (the wormer paste's active ingredient) penetrate the area deeply and thoroughly, taking the medication into the underlying tissues. The nitrofurazone combats any bacterial infection that may accompany the condition, and it helps buffer the DMSO so it won't burn or irritate the tissues. The wormer paste kills the fungus.

The dewormer is the safest type of fungicide to use in conjunction with DMSO, according to our veterinarian, since it is an oral medication, safe to use internally in the body. Harsh or poisonous fungicides like iodine should never be used with DMSO because the DMSO carries the medication into the body and could cause serious problems.

The affected area should be well cleaned before applying the medication, so no dirt or outside contaminants are carried into the deeper tissues by the DMSO. Warm water is usually adequate for washing the leg, and a handy way to apply it is with a well-rinsed dishwashing detergent squeeze bottle, using your fingers to remove any dirt that is clinging to the leg from the ointment applied at the last doctoring session.

After the area is washed with warm water and is very clean, it should be dried with a towel. The skin should not be wet when the mixture is applied. A mix can be made that will be enough for several doctorings, or it can be mixed up fresh each time-just the amount needed for one application. It can be easily stirred up with a finger, in a small wide-mouth jar. If a person doesn't want skin contact with the DMSO, rubber gloves can be used to mix it and to apply it to the leg.

Mixed with nitrofurazone ointment, the DMSO doesn't burn or irritate the skin or raw tissues like it can when used by itself, but a person may still "taste" it if your skin comes into contact with it. If using bare fingers to mix or apply the medication, hands should be washed immediately afterward.

If applied daily, this mixture usually clears up scratches faster than traditional treatments. Bandaging, even in severe cases, is unnecessary, and can actually be detrimental to fast healing. The moisture should not be held in.

With this treatment a bad case of scratches can be cleared up even if the horse must be ridden and continues to get the area wet and dirty when traveling through mud or on a dusty trail. The leg should be washed and medicated each day after the ride. For a really resistant case that has bacterial complications, you can also give the horse oral sulfa tablets to help combat the bacterial infection, and dexamethasone to aid in reducing the swelling and inflammation, according to our veterinarian.

The best prevention for scratches is to keep white-legged horses out of muddy pastures. The fungus, once introduced into a pasture, remains there indefinitely, and horses are apt to pick it up when there are cracks or breaks in the skin. Pink skin chaps, cracks or nicks more easily than tougher, darker skin; that's why the problem is most common in horses with white leg markings. If a horse must walk through mud or water often, the skin may tend to chap or crack more readily, and the fungus may be picked up from the mud. Scratches can also be a problem in winter pastures, and even dry summer pastures if the fungus exists in the dust and dirt and is introduced through breaks in the skin. But if caught early, a few treatments will clear scratches right up. A more serious, neglected case will take a bit longer.

Annual Driving Clinic at TALLY HO SHIRES By... Victoria Hauser (a very willing 'clinic helper'!)



A sure sign that summer has finally arrived is the occurrence of the annual Tally Ho Shires Driving Clinic! It's the date that Kim Murchison, who is, during the school year, a teacher of science to Riverside Middle School "kiddos"; reverts back to her calling to teach the young and not-so-young the sport of driving; as well as sharing the myriad of other activities that can be enjoyed with very willing wonderful shire horses!

Friday, June 8th, Kim spent the day working with Casey MacKenzie and her wonderful newly formed family of shires. Zorro, a shire gelding who Casey currently rides, Nelson, a huge yearling colt, and Lilly, a two year old filly; were all provided age appropriate lessons that will be the building blocks for solid careers. Likewise, Casey herself, excelled at her first lessons in driving. In fact, by Saturday afternoon, she took a turn driving the 4-up hitch.

On Saturday, more participants joined in the fun! Ame Longwell, owner of the string of horses that services the High Lonesome Ranch in Debeque, Colorado, even brought her beautiful pair of American Cream Draft horses. She was joined by Carrie Daucan, one of the wranglers at the ranch, who took to driving like a duck to water!



After some basic ground school for the participants on harness fitting and draft horse conformation, it was time to take one of the Tally Ho teams of very well trained shire horses out for a spin. First came the lessons in ground driving, then a wagon was added to the mixture. Kim even pulled in others who had come to simply audit the clinic. She just can't seem to help sharing her love for these magnificent horses!

Late in the afternoon, after a few other friends arrived, everyone got the thrill of going out for a spin on the wagon with the 4-up hitch of shires! A couple of the ladies, took a turn at feeling the horsepower through the lines as they drove the hitch themselves. (Carrie is probably still smiling!!) Though Kim's neighbors are probably more accustomed than most to the sight of this wonderful hitch of horses, a few did give a second look today.. Though some of the ladies were hooked on the sport prior to the weekend, there could be no doubt the rest had caught the bug by the end of the clinic!

As a final topping of fun, on an already amazing day, the horses were unharnessed and magically transformed into riding horses! Two of the wranglers said that, after riding these big guys, they weren't sure they could go back to their typical Quarter Horse steeds!



Another remark overhead at the end of the clinic was that this was not just a driving clinic but actually was an **"Everything that you can do with the wonderful versatile shire horse'weekend!"**

Shire Horses Make Their Mark in Equine Assisted Therapy and Vaulting

Established in May 2012. Passage Creek Shires and Friends is a 501(c)(3) established within the America Vaulting Association. We are doing vaulting, adaptive vaulting, and therapeutic riding under PATH, International. We are just getting off the ground with our first team members and clients. We are partnering with Verdun Adventure Bound in Rixeyville, VA. We did a challenge camp with them in July and provided an intro to vaulting to 40 kids using Jenson's Diplomat Tracy. I still have my farm for now, but we have rented a beautiful historic farm called Liberty Hall that has the facilities we need to conduct effective, safe programs for kids and others. We hope to partner with other organizations that provide equine therapies to develop well-rounded programs. We are so excited at the progress we have made since May. We are so lucky to have the support of Dr. David Snyder and Verdun.



We will use the Shires as our vaulting horses, our Therapeutic horses, and we will maintain the breeding program and sell Shires to benefit the Foundation. Kids can earn their way into horsemanship, riding, driving, or other horse-related skills.

This is where to find the Shires/Vedun video on YouTube:
http://www.youtube.com/watch?CzwZDE&feature=youtube_gdata_player

They didn't get our name exactly right. It is Passage Creek Shires and Friends. But that's ok.

- *Priscilla Craig*
- *Passage Creek Shires*
- *Affiliated with Passagecreek Shires and Friends*



Local Bridge Day Celebration Complete with Shire Horses



Leanne Hoagland and the Shires of Big Sky Shires participated in wagon rides at the Glendive Annual Bridge Day Celebration. The event is held every September on the second Sunday of the month. Over 150 people took a ride in the wagon with many taking an opportunity to have a picture taken with Shire filly April.



American Shire Breeders Attend CSHA National Show- Calgary Stampede



The Shire horse from America was represented at the Canadian National Shire show by three US Breeders. Wareing Shires, The Howell Brothers and Big Sky Shires participated in the 100 Year Celebration of the Calgary Stampede.

Left Above: Howell Brothers Miller, 1st place 2 year old stallion and reserve grand champion.

Left Below: Wareing Shire Hitch prepares for the Clyde/ Shire Six

Above Right : Leanne Hoagland takes a Victory Lap after winning the Draft Horse Western Pleasure on Love's Big Sky Harmony.

Below Right: Leanne Hoagland driving in the Registered Mare Cart driving her mare Big Sky All That Jazz to a 6th place finish out of 8 mares against all breeds.



Northeast Shires

is standing three outstanding Shire stallions:

We provide the same live foal guarantee for frozen semen as we do on shipped chilled for these three stallions. Please visit our website for breeding contracts and pictures of our stallions.

Epsom, NH
603-930-6975

Janet@ShireHorse.com
<http://www.ShireHorse.com>

Sladbrook Jubilee Spirit - \$1000/LFG

Rushall Isaac - \$1000/LFG

Hickory Hill Nitro of the Northeast -\$600/LFG

Northeast Shires is actively preserving the genetics of the Shire.

We collect and freeze embryos and semen from our client's quality Shire stock. Once preserved in liquid nitrogen, semen and embryos remain viable indefinitely.

Contact us for more information.

How to measure and fit a collar

How to measure a horse for a collar:

The old way is to take 2 straight edges - place 1 on top of neck and 1 on bottom of neck, parallel to the shoulder blade, measuring between the 2 straight edges in a straight line. This should give you a close measurement for a collar.

The new way: (I was told about this from a harness maker in England.) Measure the circumference (widest spot on the horse's front leg, usually under the armpit). This has been giving us the collar size, within an inch or so.

How to fit a collar to a horse:

If a collar is not properly fitted to the horse, it is sure to make him sore. Therefore, it is necessary to use the greatest care in selecting the proper shape and size of the collar. The illustration below shows you how a collar should be fitted. If care is taken in fitting the collar and adjusting the hames so the hame tug comes over center of the draft, you have eliminated all the trouble of sore necks or shoulders, and the horse will work with ease and comfort.

When fitting a horse with a collar there should not be any more space between the horse's neck and throat of the collar than will allow your fingers, when laid flat on the inside, to pass through freely.



Balance Sheet

As of September 27, 2012

	Total
ASSETS	
Current Assets	
Bank Accounts	
Alpine Bank Checking	1,934.52
Credit cards to Alpine	7,620.75
Show Fund	3,025.00
Total Alpine Bank Checking	12,580.27
Alpine CD	15,257.42
Alpine Life Member MM	13,755.87
Total Bank Accounts	\$41,593.56
Accounts Receivable	
Accounts Receivable	108.00
Total Accounts Receivable	\$108.00
Other Current Assets	
Credit Card Receivables	120.00
Inventory	3,088.25
Total Other Current Assets	\$3,208.25
Total Current Assets	\$44,909.81
TOTAL ASSETS	\$44,909.81
LIABILITIES AND EQUITY	
Liabilities	
Current Liabilities	
Other Current Liabilities	
Direct Deposit Payable	-363.29
Legal Fees Payable	0.00
Owed to SHS	-31.15
Payroll Liabilities	
Federal Taxes (941/944)	297.25
WI Income Tax	0.00
WI SUI Employer	72.00
Total Payroll Liabilities	369.25
Payroll Tax Payable	8.55
Total Other Current Liabilities	\$ -16.64
Total Current Liabilities	\$ -16.64
Total Liabilities	\$ -16.64
Equity	
Retained Earnings	35,019.67
Net Income	9,906.78
Total Equity	\$44,926.45
TOTAL LIABILITIES AND EQUITY	\$44,909.81

Profit and Loss Statement 3rd Quarter

	Total		
Income		Board Expenses	
Advertising Special Projects	650.00	Annual Board Meeting	767.83
Bulletin/ Magazine		Telephonic Meetings	334.66
Advertising Newsletter	610.00	Total Board Expenses	1,102.49
Total Bulletin/ Magazine	610.00	Contributions	180.00
Contributions/Donations Income	1,560.49	Dues & Subscriptions	290.00
Education Day Proceeds	343.80	Education Day Cost	32.95
Horse Show Income	1,978.39	Horse Show Costs	-439.53
Interest Income	36.98	Awards	645.85
Legal Defense Fund (Assessment)	200.00	Total Horse Show Costs	206.32
Membership Dues		Insurance	465.22
1 Year Membership	3,875.00	Legal & Professional Fees	10.00
2 Year Membership	2,360.00	Mailings to members	
3 Year Membership	140.00	Bulletin	
Corporate	275.00	Newsletter Honorarium	500.00
Life	4,148.00	Postage Bulletin	1,245.02
Total Membership Dues	10,798.00	Printing Bulletin	3,015.14
Merchandise Sales	1,165.75	Total Bulletin	4,760.16
On Line Stud Book Revenue	1,248.00	Minutes	415.54
Raffle Sale Proceeds	120.00	New Member Packets	97.72
Registry Income	30.00	Total Mailings to members	6,016.43
Genetic Identification Revenue	370.00	Merchandise Product Cost	157.27
Pedigree	20.00	Merchandise Sales Tax	85.96
Prefix reservation	325.00	Merchandise Shipping Costs	4.71
Registrations	11,332.40	Office Expenses & Supplies	941.75
Replacement papers	260.00	Total Payroll Expenses	7,863.00
Sport Horse	1,365.00	Postage	350.42
Transfers	5,790.00	Total Promotional	1,828.62
Total Registry Income	19,492.40	Registry Expenses	
Service/Fee Income	35.00	Genetic Marker Costs	3,125.00
Shires4Sale.com Revenue	451.20	Registry Discounts	703.53
Uncategorized Income	39.60	Total Registry Expenses	3,828.53
Total Income	\$38,729.61	Taxes & Licenses	21.00
Gross Profit	\$38,729.61	Telephone Expense	506.93
Expenses		Total Transition costs	1,535.95
Advertising	527.40	Travel	1,118.73
All-American Contest Expenses	201.79	Youth Awards	34.12
Bad Debts	125.00	Total Expenses	\$27,931.97
Bank Charges	239.27	Net Operating Income	\$10,797.64
Credit Card Charges (PayPal)	258.11	Net Income	\$10,797.64
Total Bank Charges	497.38		

BREED PROMOTION

MANY THANKS to all these members for their effort and dedication to promote **SHIRES!!** If you have an upcoming promotional event for Shires or recently participated in an event, we would like to publicize it in the Members' Bulletin. We can also help with Shire and ASHA information for display and handout. Contact Karla Stoner (bloomforge@peoplepc.com). **Recently Completed Events:**

Midwest Old Threshers Reunion, Mt Pleasant, Iowa. August 30 – September 3. Five days of all sorts of antique farm equipment, horse drawn, steam and gas driven, horse pulls, crafts, antiques and lots of food. Association and Breeder's Brochures were sent to the event organizers for handout. A team of Shires participated with the horse drawn equipment in the 5 day event.

Stokes County Fair, King, NC. **Second Annual Horsin' Around Day**. September 13. Dayla, Steve and Danae Kohler will have some of their Shires at this event for breed demos and interaction with fair goers. They will also have an ASHA banner and Shire brochures for hand out. The Kohler's organized the first Horsin' Around Day for the fair in 2011, inviting a number of horse breeds for demonstrations which were a great success. This year the event has been expanded to include farrier demonstrations and equine nutrition talks. Look for more details and photos in the Winter Bulletin. The Kohlers can be reached at s.dkohler@netzero.net

Upcoming Events:

First Annual Fall Classic Draft Horse Sale – Michiana Event Center, Howe, IN. October 26 & 27. Put on by the Clydesdale Breeders of the USA and open to all breeds. They hope to have at least 150 catalogued horses. ASHA tentatively plans to have a booth at the event. Friday the 26th will be a preview of horses and a tack sale. Horse will sell on Saturday the 27th. For more information on the event, go to www.clydesusa.com

Equine Affaire, West Springfield, MA – Eastern States Exposition Grounds - November 8 – 11, 2012. Shire breed stall and demos, ASHA information and merchandise booth. More details to follow. Contact Vicky McCaffrey oxkill@capital.net or Karla Stoner bloomforge@peoplepc.com

If you have an upcoming promotional event for Shires or recently participated in an event, we would like to publicize it in the Members' Bulletin and on the website. We can also help with Shire and ASHA information for display and handout. Contact Myrna Rhinehart (secretary@shirehorse.org) or Karla Stoner (bloomforge@peoplepc.com).

ASHA Mission and Purpose Statements

Mission Statement

The Mission Statement of the American Shire Horse Association is to maintain the integrity of an accurate registry and promote the Shire breed through excellence.

(Developed at the 2002 Annual meetings)

Purposes: (summarized from the ASHA by laws and articles of incorporation)

- To form, conduct and operate a non-profit organization composed in whole or in part of persons, firms and/or corporations having interest in the breeding and improvement of Shire horses;
- To foster and preserve the traditions pertaining to the Shire horse;
- To encourage original investigations in determination and development of the best types of horses and the breeding to only purebred sires;
- To assist in procuring and making available for breeding suitable stallions and mares;
- To collect, revise, preserve and publish the history and pedigrees of purebred horses, particularly Shire stallions and mares, under such regulations as may be prescribed by said organization;
- To do all and every other act or thing necessary, suitable and/or proper for the accomplishment of all or any of the purposes or in the furtherance of any of the powers herein set forth and to do every other act or thing incidental to or appurtenant to or connected with said powers.

The Youth Committee is proud to announce this year's Youth Scholarship to Mackenzie Harrold. Mackenzie is currently a junior at Mogadore High School (MHS) in Ohio and plans to study at the University of Akron in Criminal Justice.

Mackenzie spends her time participating in a variety of school activities including French/Spanish Club, Yearbook Committee, Chorus Club, Cheerleading, and Principle's Advisory Council. She is also a member of COSCA, 4-H, and is the WPQHA Youth Team Secretary.

Mackenzie was introduced to Shires a few years ago and attributes her life lesson to a Shire mare named Meggs. Meggs taught Mackenzie to enjoy competition rather than allowing the stress and pressures of the show ring get to her. Meggs' calm and willing demeanor showed Mackenzie how to relax in the saddle as well as to enjoy herself. When showing Meggs, Mackenzie learned how friendly and helpful other Shire exhibitors are, something she did not see in her own breed. Meggs' lesson surely worked as Mackenzie and Meggs was awarded Clyde/Shire Senior Showmanship Champion as well as the Clyde/Shire Walk-Trot Reserve Champion last year at the Ohio State Fair!



Congratulations Mackenzie!
Submitted By,
Danelle Kinney
Youth Committee Chair

Rising Moose Stables

**Michael & Turie
Sorrell**

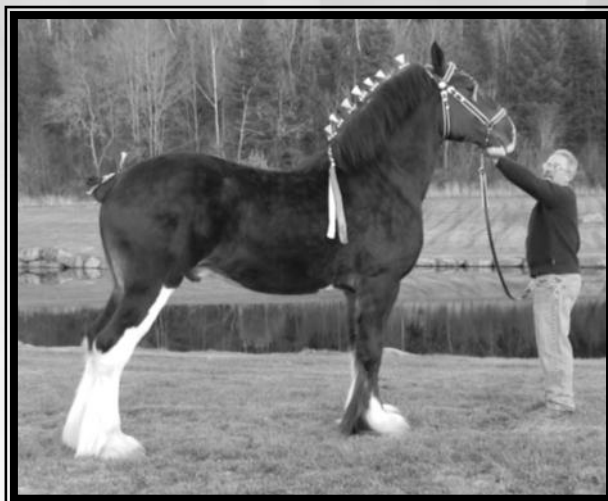
147 Fournier Road/ P.O. Box 107
Concord, VT 05824
(802) 695-2980
tsorrell@myfairpoint.net
www.risingmoosestables.net

**STRIVING TO
PRODUCE THE BEST**

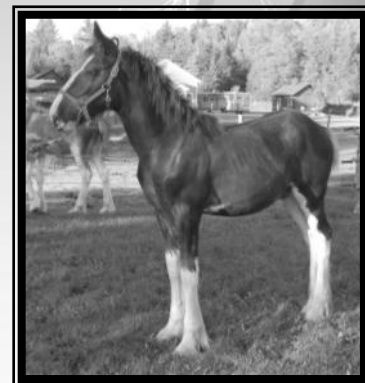
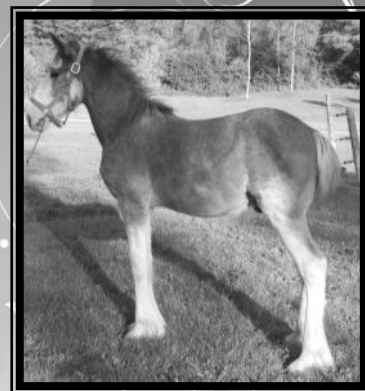
Proudly Offered For Sale:
RM'S Moves Like Jagger

By: Legacy's Image
Out Of: Taylors Agatha

Pictured Right



Legacy's Image
2011 Res. All-North American
Two Year Old Stallion



"RM'S Splitting Image"
Out Of: Legacy's Image &
Tayson Juliette

Bone Chips Fall Into Different Categories

By Larry R. Bramlage, DVM, MS, DipACVS
Lameness: Bone and Joint Problems - Jun 19th, 02

What are bone chips and how do they occur?

Bone chips or chip fractures of horses' joints are properly termed "osteochondral fragments." Osteo (Latin for bone) and chondral (Latin for cartilage) describe the make-up of the fragments that can cause irritation and lameness in a horse's joint. In horses, the major component of the fragment is normally bone. In people, cartilage pieces are more common. Fragments (chips) occur for two main reasons:

- 1) Defective development of the bone (sometimes called osteochondrosis) where the bone fragments under normal loads; or
- 2) Uneven loading or trauma to normal bone, where the bone fragments are under uneven pressure.

Chip fractures seldom totally separate or become free in the joint, but if they do, they usually lodge in one of the many cul-de-sacs in joints and are quickly trapped, isolated by scar tissue and rendered innocuous. If the chip fractures happen when a horse is still growing or during a period of rest, the joint will try and isolate the fragment by surrounding it with scar tissue, rendering it smooth and non-irritating, similar to how an oyster makes a pearl from a grain of sand.

The chip fractures that cause problems are those that cause debris to be shed within a joint and irritate the joint. Debris causes acute painful inflammation. If the debris shedding stops, the joint can heal. If the debris shedding is chronic, then arthritis results. Chip fractures can range in size from miniscule to as large as the tip of a man's finger. But, size does not matter, as it is the amount of debris that is shed that matters.

Chip fractures can happen in all joints, but are most common in the front fetlocks (ankles) and the carpus (knees). Estimates place the prevalence that a horse will have a chip fracture in one of its joints sometime in its life between 20 percent and 50 percent. About 15 percent of horses have some type of chip that occurs during adolescent play and spontaneous competition, even before they begin training.

How do bone chips affect a horse's athletic ability?

Acute chip fractures in high motion areas shed a lot of debris because the two raw bone surfaces rub together like two rocks, shedding little bits of sand into the joint. This debris causes pain, lameness and poor performance. Because chip fractures seldom come totally free in the joint, but remain at their site of origin, this rubbing and debris shedding continues with the joint motion. The more strenuous the motion, the more the lameness. Chronic or old fractures surrounded by scar tissue in high motion areas can eventually become a problem if their protective scar wears through and the chip begins to rub on the joint surface, damaging it and shedding debris. This is how a previously innocuous chip fracture can become painful. When a chip is isolated, surrounded by scar tissue, or in a very inactive area of the joint, it can be totally innocuous. Chips that are acute and still have raw bone surfaces to

rub together, or that wear on very high motion areas of the joint, cause pain. The pain is not disabling, but it reduces performance, like trying to run with a small pebble in your shoe. It does not lead to further fracture, but can cause over-stress injuries such as tendonitis if it causes a horse to become unbalanced or to spend more than the normal time on the normal limb, to avoid the discomfort.

What are the treatment options?

Treatments are dictated by how much trouble the chip is causing the horse. Chips that cause lameness and reduced performance are removed by arthroscopic surgery accompanied by a short rest. Chips that are irritating to the joint causing increased watery fluid, but no lameness, can be controlled by joint fluid supplementation (with Hyaluronic Acid) and anti-inflammatories such as cortico-steroids or phenylbutazone. Chip fractures that are in innocuous locations, are surrounded by scar tissue and are not irritating to the joint are best left undisturbed. If you have just won two legs of the triple crown you leave them alone, as they are not bothering the horse.

Prepared by Larry R. Bramlage, DVM, MS, DipACVS, on behalf of the American Association of Equine Practitioners' (AAEP) On Call Program.

http://www.aaep.org/health_articles_view.php?id=178



Statement of Position on Animal Care*

The American Shire Horse Association encourages Shire owners to:

- Provide a high standard of livestock health;
- Manage livestock in a humane manner;
- Use and maintain transportation and handling facilities that provide livestock health and safety;
- Provide feed and water to maintain livestock health and productive ity;
- Consult with a licensed veterinarian concerning animal health care practices;
- Use approved livestock health products according to label directions;
- Sustain and conserve natural resources by proper management of land, air, water and wildlife;
- Support and maintain rural and family traditions important to our society.

*Resource: National Pedigreed Livestock Council
(text provided by member Sharon McLin)



2012 Stallion Reports

It is that time of year again when we plan for our 2013 foal crop.

Please submit your stallion reports by November 30th!!

All stallions and owners will receive a free breeder's listing in the Winter Bulletin for participating!



**NEWS
FLASH**

Are you taking your Shires to a Horse Expo or event to "promote" the breed?

ASHA offers a few \$150 stipends to the first members that apply (and qualify) for them.

Please Contact **Karla Stoner**
(301)874-3250 or Email: bloomforge@peoplepc.com



Ayrshire Farm is Proud to announce the release of
Achenbach
Hitching And Driving

A video Companion .

This instructional DVD delves into the highlights and key parts to the Achenbach driving methods and is an accompaniment to the book also available from Ayrshire farm.

Please visit our website
www.achenbachdriving.com
for more information and how to order



Our Draft Horse Feeding Program

By Lazy Horse Ranch ~ A draft horse rescue

I have been feeding our draft-horses a high-fat/low-carb diet (EPSM diet) since Feb-2002, and we have never had problems with colic, founder, diarrhea, muscle diseases, skin-problems, hoof-problems, etc. - not even a runny nose.

I swear by this diet - and here is more information about it:

Decrease carbohydrates by eliminating as much as possible grains or sweet feeds, substituting hay-based pellets and/or commercial pelleted or extruded feeds known to be lower in carbs.

Horses not on any grain at all may still have problems with EPSM, so it is not just feeding grain that is the problem, but feeding too little fat.

Add fat to the diet to bring total daily calories to about 25% calories from fat, which you can accomplish with 2 cups = 1 pound of vegetable oil or powdered animal fat designed for horses or pigs, or by substituting rice bran for some of the oil. In fat content, 1 cup oil = 2.5 pounds rice bran. Total added fat may be reduced by feeding very high fat commercial feeds; right now the best of these is Buckeye Ultimate Finish (25% fat).

The following diet provides a maintenance ration per 1,000 pounds of horse per day. Amounts should be increased or decreased according to the horse's weight and/or level of work. At any rate, the only important ingredient to accurately measure is the fat.

Here are more details about what and how we feed:

OIL / FAT: 2 cups of oil (1 pound of fat) per 1,000 lbs per day

TREATS: Alfalfa Cubes (cheap and healthy)

HAY: Grass Hay - free choice

FEED: I mix about 12 parts of Alfalfa pellets with one part of water, let it soak for about 10 minutes, then add 2 parts of oil * and, if needed, some Red Cell and/or joint supplement (Corta Flx liquid), mix and let stand for at least 2 hours (I do it overnight). Right before feeding I add any supplements (Selenium !!), medication or wormers if necessary. If you get the mix right, the alfalfa pellets soak up all the oil w/o falling apart or turning into mush, and the feed is almost dry (it looks like soft, over-sized Alfalfa pellets then). The amounts I've given are an estimate since I mix feed in a big cement mixer. An adult draft horse should get about 3-4 cups of oil daily. If the mixing is too much trouble for you, you can just as easily pour the oil on the hay (if every horse has it's own hay supply), or try using dry Alfalfa pellets and just pouring the oil over it right before feeding - some horses eat it that way, some don't.....

* NOTE: The original recipe by Dr. Beth Valentine calls for soy, canola or corn oil. Due to financial aspects, I use regular soy-oil that I buy in 5-gallon containers at Sam's Club. However, I received multiple e-mails with comments and facts about OIL

Recipe for a Happy Draft Horse

This all-purpose diet will feed one 1,500 to 2,000 draft horse for one day. The alfalfa pellets may be mixed or substituted with Nutrena Compete, Purina Strategy or Equine Senior, Southern States Legend, Blue Seal Hunter, Demand, or Racer.

2-6 scoops (6-9 pounds) alfalfa pellets

3-4 cups oil (soy, canola, or corn)

1-2 ounces Vitamin E/selenium supplement

Buckets of water

Heaps of good forage

Tons of love and respect

This text was copied from:

http://www.ruralheritage.com/vet_clinic/epsmdiet2.htm

Please find more information and the entire text on that website.

Counting Calories in Horse Feed

Feed.....Approximate Calories/Pound

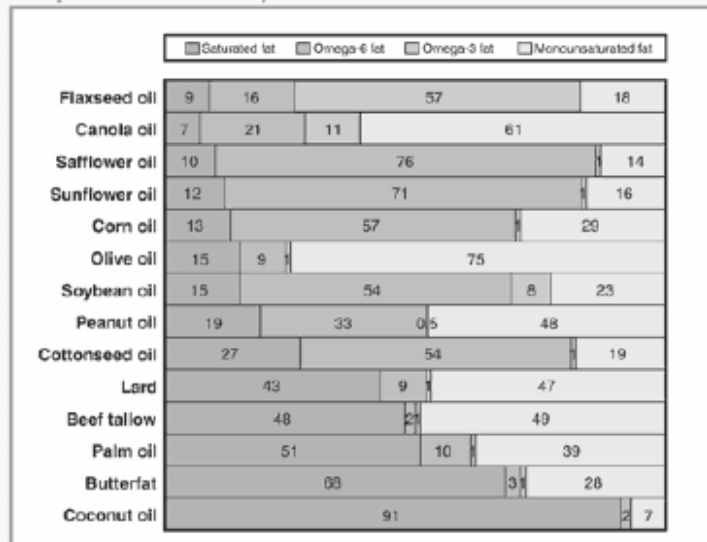
Timothy or other grass hay.....	800-900
Alfalfa pellets or hay.....	900-1,000
Sweet feeds.....	1,200-1,400
Oats.....	1,450
Purina Strategy.....	1,500
Rice Bran.....	1,550
Soybean meal.....	1,600
Barley.....	1,620
Corn, wheat.....	1,750
Purina Athlete.....	1,900
Vegetable oil,	
Animal fat designed for pigs or horses.....	4,000

Compiled by Beth A. Valentine, DVM, PhD, this site's virtual vet and co-author of Draft Horses, an Owner's Manual.

Text copied from

http://www.ruralheritage.com/vet_clinic/feed_calories.htm

Comparison of Dietary Fats and Oils



Supplement for Horses, Dogs and other animals

Rice oil has found favor with performance horses or older horses that have a difficult time keeping weight on. The rice oil is purported to give horse and dog coats a rich, shiny look. Some zoos are even feeding rice oil as a supplement to their tigers and lions!

HEALTH BENEFITS OF...

Gamma Oryzanol

Rice bran oil is rich in gamma-oryzanol, a group of ferulate esters of triterpene alcohols and phytosterols. The high antioxidant property of gamma-oryzanol has been widely recognized. Studies have shown several physiological effects related to gamma-oryzanol and related rice bran oil components. These include its ability to **reduce plasma cholesterol, reduce cholesterol absorption and decrease early atherosclerosis, inhibit platelet aggregation, and increase fecal bile acid excretion.** Oryzanol has also been used to **treat nerve imbalance and disorders of menopause.**

Tocotrienols Rice bran oil is the only readily available oil, other than palm, that contains significant levels (approximately 500 ppm) of tocotrienols. These occur in at least four known forms and are similar to the tocopherols in chemical structure. They belong to the **vitamin E** family and are powerful natural antioxidants. The protective benefits of dietary antioxidants in the prevention of cardiovascular disease and some forms of cancer have been widely publicized.

Corn Oil has 1% Omega 3; Soybean Oil has 8 % Omega 3 (Omega 3 are the best type of Omega EFA (Essential Fatty Acids; like in Salmon; Soybean Oil better than Corn Oil; imo also whether the Oil is cold pressed is important; you use less Rice Bran Oil than other !

Vegetable oils are a major source of vitamin E (tocopherols) which act as antioxidants in promoting anti-atherogenic properties such as decreasing LDL cholesterol uptake.

Soybean oil and canola oil are important dietary sources of vitamin K

Fat Soluble Vitamins (A, E, D and K)

Because they are soluble in fats, the vitamins A, E, D and K are sometimes added to foods containing fat (e.g., vitamin A and D in milk, vitamin A in margarine) because they serve as good carriers and are widely consumed. Vegetable oils are a major source of vitamin E (tocopherols) which act as antioxidants in promoting anti-atherogenic properties such as decreasing LDL cholesterol uptake. Soybean oil and canola oil are important dietary sources of vitamin K. Fats are not generally considered good sources of other fat soluble vitamins Source: Institute of Fats and Oils

Save the Date

2013 Annual ASHA Education Day and Member's Meeting

Where: Davis, California

When: Feb. 15th – 18th, 2013

Closest Airports:

Sacramento (30 minutes away)

Oakland (60 minutes away)

San Francisco (90 minutes away)

Agenda:

15th – Afternoon tour ~ DNA Analysis Lab at the VGL Davis, CA.

16th – Education Day at the University of California at Davis

Possible topics could include:

Harness fitting/saddle fitting

Conditioning and travel for show

Neonatology

Radiology – ring bone/side bone, laminitis

CPL – Scratches research information

*Please let us know if you have an idea not listed above.

17th – ASHA member's meeting from 8am – 10 am

ASHA Board of Director's meeting to follow

18th – Finishing up the ASHA Board of Director's meeting

*Hotel details to follow...

For more information or to suggest topics for Education Day, Kim Murchison at thshire@sopris.net or 970-625-1142



CareBare Photos

Quarterly Registrations: July 1 – Sept. 12, 2012

Remember to check your documents for errors upon receipt from the Secretary.

The information here is from the database at the office..

BADGER POCKET HH MARBLE'S GRACE - 24671-M

Mare; Bay. Wide irregular blaze, wider over right eye with point over left eye continuing over nose between nostrils to upper lip and chin. Left foreleg black. Right foreleg white sock to mid-cannon, higher in back; striped hoof. Left hind leg white sock higher in back with point to hock on inside. Right hind leg white stocking to hock in front, below hock in back; striped hoof. Foaled May 27, 2008; Bred and owned by WILLIAM C. ANDERSON, Ellensburg, WA; Sire HIGH BRIDGE HUCK 22957-S; Dam BADGER POCKET MOLLY'S MARBLE 23108-M.

BLACK FOREST SUNFLOWER - 24658-M

Mare; Black. Blaze with pointed star widening to over right nostril; whorl in center above eyes. Left foreleg white stocking to just above knee, higher in back. Right foreleg white stocking above knee with a point on the outside. Left hind leg white stocking to below hock in back to above hock in front. Right hind leg white stocking to hock in back extending to stifle and belly in front. Foaled May 31, 2011; Bred by MICHELLE SIMONO, Silt, CO. Owned by JEFF BARTKO, Colorado Springs, CO; Sire COWERSLANE NOMINATION 22289-S; Dam SUMMER RAIN & BK'S LIL CHARMER 23952-M.

DCF TRULY TRINITY - 24685-M

Mare; Gray. Medium irregular star, higher on left, cutout on right top; connecting narrow jagged stripe angles to left side of face near muzzle; connecting narrow snip angles to right side of nose; lower lip white. Left foreleg white sock to mid-cannon. Right foreleg white stocking to above knee. Left hind leg white sock to mid-cannon. Right hind leg white stocking to below hock. Foaled May 30, 2011; Bred by CHRISTY SURPRENANT-RILEY, Brewster, MN. Owned by JACKIE JOHNSTON, Susanville, CA; Sire CAERBERLLAN MAGNUM (47018) 23105-S; Dam FOGGY MEADOWS EMMA 24203-M.

DUA HE CHI'S POLLY - 24659-M

Mare; Black. Blaze wider on top gradually narrowing to over nose. Left foreleg white pastern below pastern in back over pastern in front. Right foreleg white stocking to knee. Left hind leg white spot on coronet. Right hind leg white stocking to hock. Foaled May 2, 2010; Bred and owned by ARLIN and WAYNE WAREING, Blackfoot, ID; Sire HILLMOOR DOUBLE DIAMOND (C.420) 22801-S; Dam LONG ACRES LADY SHAMROCK 24097-M.

FORTHOFER'S BECKY - 24681-M

Mare; Bay. Wide blaze with lateral points over both eyes; continuing over muzzle, upper lip, and right nostril, touching left nostril; right eye blue. Left foreleg white stocking above carpus in front, just below carpus in back. Right foreleg white stocking to mid-carpus. Left hind leg white stocking level with hock in front, approx. 3" below hock in back. Right hind leg white stocking to just above hock in front, approx. 3" below hock in back. Large white area over ventral thorax. Foaled April 27, 2012; Bred and owned by RICHARD A. FORTHOFER, Portland, IN; Sire ILLUSION FARMS S. N.'S FINAL CHAPTER 22985-S; Dam SKANE SPRINGS SWEET PRINCESS (147960) 24533-M.

FOX HOLLOW JAZ - 24679-M

Mare; Black. Wide blaze extending to over nostrils, white tear drop spot at top left. Left foreleg white stocking to top of knee. Right foreleg white irregular pastern outside extending up back of leg; white triangle on outside of knee pointing down. Left hind leg white stocking from below hock in back to point in front of hock. Right hind leg white stocking below hock in back to point in front of hock. Foaled February 11, 2012; Bred and owned by KENNETH and KIMBERLY FOX, Oswego, NY; Sire OX KILL TITAN 22715-S; Dam STORYBOOK'S DOLLY 24328-M.

FOX HOLLOW ZOE - 24669-M

Mare; Black. Large star widens below eyes; strip narrows above nostrils to irregular snip on upper and lower lips. Left foreleg jagged white stocking to just above knee; inside leg white points to chestnut. Right foreleg white stocking to knee in front, above knee in back. Left hind leg white stocking to below hock in rear extending to a point in front. Right hind leg white stocking to below hock in rear extending to point in front. Left side white belly triangle with two white spots above. Left neck double cowlick, right neck single cowlick near crest. Foaled March 20, 2007; Bred and owned by KENNETH and KIMBERLY FOX, Oswego, NY; Sire OX KILL TITAN 22715-S; Dam FOX VALLEY QUINCY'S CUT (147386) 24100-M.

FREEDOMREINS HARMONY JOY - 24676-M

Mare; Black. Irregular star with notch on left, continuing into stripe and wider snip between nostrils; lower lip white with black spot. Left foreleg white stocking just below knee in front to just above knee in back. Right foreleg white patch on outside front of knee. Left hind leg white stocking to below hock in back to above hock in front. Right hind leg white patch on front of hock. Foaled July 20, 2010; Bred and owned by PAT PACE, Marlboro, NJ; Sire DEIGHTON EDWARD (C.869) 23090-S; Dam RED BRAE DONEGAL LADY (147086) 24374-M.

FREEDOMREINS MYSTIQUE PEACE - 24680-M

Mare; Black. Star with black spot on forehead continuing into irregular stripe with notch on right side near eye; narrowing at muzzle and widening snip to inside of nostrils; lower lip black. Left foreleg white stocking to upper knee. Right foreleg white stocking mid-knee in back to above knee in front. Left hind leg white stocking just below hock in back to mid-hock in front. Right hind leg white stocking just below hock in back to just above in front. White marking both sides at girth. Foaled September 2, 2010; Bred and owned by PAT PACE, Marlboro, NJ; Sire DEIGHTON EDWARD (C.869) 23090-S; Dam PACE FARM ARIANA 23987-M. Page 19

HIGH BRIDGE ELLIE - 24657-M

Mare; Bay. Irregular blaze with hook over left eye; narrowing below eyes and widening again extending down over muzzle including left nostril, lower lip and chin; white under jaw. Left foreleg black. Right foreleg white stocking to mid knee, higher in back. Left hind leg white stocking to below hock in back extending to a point in front. Right hind leg white stocking to below hock in back to mid hock in front. Foaled July 27, 2011; Bred and owned by JOHN and HEATHER ERSKINE, Sequim, WA; Sire STARCASTLE TITAN [1815-S] 23295-S; Dam HIGH BRIDGE LOLA 23946-M.

ILLUSION FARMS MI AMIGA - 24672-M

Mare; Black. Blaze higher on left with hook over left eye; continuing to muzzle in between nostrils. Left foreleg small white coronet on outside. Right foreleg black with small white spot on outside of knee. Left hind leg white sock to mid-cannon. Right hind leg white stocking to below hock in back to above hock in front. White around navel area; small white splash on right belly; small white spot and whorl middle of belly. Foaled July 27, 2009; Bred and owned by DANIEL and KATHLEEN HATHAWAY, Fryeburg, ME; Sire DEIGHTON EDWARD (C.869) 23090-S; Dam PACE FARMS CARA 24570-M.

ILLUSION FARMS REMEMBER Z - 24673-M

Mare; Black. Even blaze with pointed top and slight flare on nose, continuing over left mid-nostril, over outer right nostril. Left foreleg white stocking to top of knee, slightly higher in back. Right foreleg white stocking to top of knee. Left hind leg white stocking below hock in back to above hock in front. Right hind leg white stocking below hock in back to above hock in front; white patch on stifle. White belly spot on front right side near navel. Foaled March 26, 2012; Bred and owned by DANIEL and KATHLEEN HATHAWAY, Fryeburg, ME; Sire ILLUSION FARMS REMEMBER THE TITAN 23167-S; Dam CUBLEY ZOE (147229) 24202-M.

MIDNIGHT STAR'S HELENE - 24675-M

Mare; Black. Medium blaze, right side widens above eye, down nasal ridge to just outside nostril, black spot on muzzle below nostril; left side sharp point mid-forehead and rounded point just above eye, down nasal ridge, around nostril; white upper and lower chin. Left foreleg white stocking to just above knee in front dropping to just below knee medially. Right foreleg white stocking to just above knee, sharp points of black down into white both medially and laterally. Left hind leg white stocking to three-quarters cannon behind, sloping up to mid-gaskin in front. Right hind leg white stocking to three-quarters cannon behind, sloping up to mid-gaskin in front. Foaled May 14, 2012; Bred and owned by BRIT C. and SHARON McLIN, New Castle, CO; Sire RED BRAE DUKE (46746) 23069-S; Dam MIDNIGHT STAR'S BEAUTY 24236-M.

PASSAGE CREEK CHANTEUSE - 24670-M

Mare; Black. Wide irregular blaze from upper forehead tapering to left nostril; notch near left eye and cutout over right eye; snip on left side; black upper lip, pink lower lip; white chin. Left and right forelegs black. Left hind leg white stocking to hock in front, below hock in back. Right hind leg white stocking to hock in front, below hock in back. Foaled June 18, 2011; Bred and owned by PRISCILLA CRAIG, Bealeton, VA; Sire HILLMOOR BLACK SUPREME (C.673) 22981-S; Dam WALKABOUTS AMAZING GRACE 24008-M.

PERIDOTS DAISY - 24660-M

Mare; Gray. Irregular blaze with cutout near right eye; extending over nose. Left foreleg white stocking to just above knee. Right foreleg white stocking to just above knee. Left hind leg white stocking below hock in back to above hock in front with white extending onto hip. Right hind leg white stocking below hock in back to above hock extending to mid gaskin. Foaled May 20, 2011; Bred and owned by RUSSELL A. BRAND, Zimmerman, MN; Sire ILLUSION FARMS S.N. GREAT MAGNITUDE 22917-S; Dam SHANNASHAWNS LADY ROXANNE 24229-M.

PERIDOTS RUBY - 24661-M

Mare; Black. Wide round star narrowing to strip and snip over nose. Left foreleg white sock. Right foreleg white sock with point on outside. Left hind leg white stocking to just below hock, higher in front. Right hind leg white stocking to just below hock, higher in front. Foaled June 2, 2011; Bred and owned by RUSSELL and CURTIS BRAND, Zimmerman, MN; Sire SHIRE CREST BRIGADIER 22562-S; Dam SUDDEN CREEK UBBY 23913-M."

RM'S SPLITTING IMAGE - 24693-M

Mare; Black. Medium blaze widening near right eye, continuing over nostrils; black upper lip, white lower lip and chin. Left foreleg white high jagged stocking over knee. Right foreleg white high irregular jagged stocking to knee in front, above knee behind, sabino markings above inside. Left hind leg high white stocking to below hock in back, to stifle in front; sabino markings on inside. Right hind leg high white stocking to over hock in back, to stifle in front; sabino markings front and inside. White spot top right hip; white sabino markings on abdomen from girth to between hind legs. Foaled March 30, 2012; Bred and owned by TURIE SORRELL, Concord, VT; Sire LEGACY'S IMAGE 23301-S; Dam TAYSON JULIETTE 24106-M.

ROYAL VIEW BLACK TOP'S - 24664-M

Mare; Black. No face markings. Lower lip white. Left foreleg white ankle. Right foreleg black. Left hind leg white stocking to hock. Right hind leg white to mid hock. Foaled April 12, 2011; Bred and owned by BILL TROYER, Millersburg, OH; Sire BLACK PARK SENSATION [1810-S] 23011-S; Dam ROCKEY TOP'S LILEIGH 24131-M.

ROYAL VIEW PRETTY LADY - 24665-M

Mare; Black. Regular blaze extending between nostrils to lower lip. Left foreleg white stocking to knee with a dip on the outside. Right foreleg white stocking to knee. Left hind leg white stocking below hock in back to mid hock in front. Right hind leg white stocking below hock in back to mid hock in front. Small spots on left and right flanks. Small belly white. Foaled May 4, 2011; Bred and owned by BILL TROYER, Millersburg, OH; Sire BLACK PARK SENSATION [1810-S] 23011-S; Dam ROYAL VIEW LADY HOLLY 23732-M.

ROYAL VIEW QUEEN - 24689-M

Mare; Black. Narrow blaze gradually widens to in between nostrils; lower lip white. Left foreleg white to just below knee. Right foreleg black. Left hind leg white stocking to below hock in back, top of hock in front. Right hind leg white stocking to below hock in back, top of hock in front. Foaled March 21, 2010; Bred and owned by BILL TROYER, Millersburg, OH; Sire BLACK PARK SENSATION [1810-S] 23011-S; Dam ROCKEY TOP'S LILEIGH 24131-M.

SPRINGHILL PANSY'S ROXANNE - 24691-M

Mare; Black/Dark Bay. Broad blaze with round star, point over left eye, cutout near right eye, narrows over face, widens over both nostrils; white upper and lower lips, chin, left lower jaw. Left foreleg white stocking to below knee in front, above knee in back. Right foreleg white stocking to below knee in front, above knee in back. Left hind leg white stocking to below hock in back, to stifle in front. Right hind leg white stocking to below hock in back, to stifle in front. Small irregular spots on abdomen left front, left rear, right rear. Foaled June 20, 2011; Bred and owned by STEPHAN M. and JUDY L. O'DWYER, Belgrade, MT; Sire ISLES FIELD DANNY BOY (46916) 23001-S; Dam HEART MT. ROXANNE'S PANSY 23766-M.

STEEGE'S KASHMIRE (7/8 SHIRE) - B-24688-M

Mare; Black. Medium blaze, point at top and near left eye, right side jagged extending to in between nostrils; lower lip white. Left foreleg black. Right foreleg white to under knee in front, lower in back. Left hind leg white stocking to under hock, lower in back. Right hind leg white stocking to under hock, lower in back. White patch left rear barrel. Foaled April 8, 2011; Bred and owned by VERN E. STEEGE, Fredericksburg, IA; Sire FOX VALLEY QUINCY'S ZERO 22934-S; Dam STEEGE'S ASHLEY (3/4 SHIRE) A-23617-M.

STONY CREEK APRIL - 24686-M

Mare; Black. Medium irregular blaze, point over left eye, cutout near left eye with smaller notch below, smaller cutout near right eye; narrows above muzzle; snip on muzzle between nostrils; white chin. Left foreleg white stocking to knee, lower in back, striped hoof. Right foreleg white marking on inside front pastern; white spot on back of knee. Left hind leg white stocking to just below hock in back, higher in front with patch on inside gaskin. Right hind leg white stocking to just below hock in back, higher in front with patch on front of gaskin. White patch on right front bottom of barrel. Foaled April 2, 2008; Bred and owned by EARL and VICTORIA STRAND, Orland, CA; Sire HUSKA MILLENNIUM SHIRES DUKE OF EARL 22861-S; Dam ARGONAUT'S PREMIER EXCLAMATION 23807-M.

STONY CREEK MISTY - 24687-M

Mare; Black. Medium irregular blaze, pointed top higher on left angled down to right, cutout near level of right eye, narrows in center, white over nostrils. Left foreleg black. Right foreleg white stocking to center of knee, black stripe at heel. Left hind leg white stocking above hock in front, below hock in back; white dot front above hock. Right hind leg white stocking below hock in back, above hock in front. Foaled June 9, 2011; Bred and owned by EARL and VICTORIA STRAND, Orland, CA; Sire HUSKA MILLENNIUM SHIRES DUKE OF EARL 22861-S; Dam JAMES VALLEY DELAMERE 23226-M.

TALLY HO DUKE'S EBONY - 24683-M

Mare; Black. Small diamond star middle forehead; white lower lip. Left foreleg white sock to mid-cannon, downward point on inside. Right foreleg white sock to mid-cannon, higher in back with downward point on outside. Left hind leg white stocking below hock. Right hind leg white stocking below hock. Foaled March 24, 2012; Bred and owned by KIMBERLY N. PARRINGTON-MURCHISON, Rifle, CO; Sire RED BRAE DUKE (46746) 23069-S; Dam TALLY HO MARION 23770-M.

TALLY HO DUKE'S JESSE - 24684-M

Mare; Black. Large, irregular blaze extending over left eye with jagged cutout near right eye, continuing between nostrils; white lower lip. Left foreleg white stocking to knee. Right foreleg white stocking to knee with downward point on outside. Left hind leg white stocking below hock in back to hock in front. Right hind leg white stocking below hock in back to hock in front. Foaled May 12, 2012; Bred and owned by KIMBERLY N. PARRINGTON-MURCHISON, Rifle, CO; Sire RED BRAE DUKE (46746) 23069-S; Dam TALLY HO BK'S LADY AIMEE 23888-M.

TALLY HO DUKE'S KYLEAH - 24666-M

Mare; Black. Large diamond-shaped star between eyes; spotted stripe down nose to triangular snip to left nostril; white lower lip. Left foreleg white stocking above knee on outside to just below knee on inside. Right foreleg white sock mid-cannon. Left hind leg white stocking to below hock in back to mid-hock in front. Right hind leg white stocking to below hock in back to mid-hock in front. Small white patch on right lower abdomen just right of midline. Foaled May 18, 2011; Bred and owned by KIMBERLY N. PARRINGTON-MURCHISON, Rifle, CO; Sire RED BRAE DUKE (46746) 23069-S; Dam TALLY HO BK'S LADY BIANCA 24386-M.

TALLY ROSE BUD'S BEST - 24690-M

Mare; Black. Blaze with round star, point near right eye, hook above right muzzle; white over muzzle between nostrils; lower lip white. Left foreleg leg high white jagged stocking above knee. Right foreleg white stocking to middle of knee, higher in back. Left hind leg white stocking to below hock in back, middle of hock in front. Right hind leg white stocking to below hock in back, middle of hock in front. White spot rear abdomen. Foaled January 28, 2011; Bred and owned by LORI J. BEST, Zephyr, TX; Sire TALLY HO COMMANDER 22662-S; Dam LAZY S MIDNIGHT ROSE BUD 23740-M.

TAYSON LADY - 24663-M

Mare; Black. Blaze from base of ears to muzzle, narrowing between eyes. Left foreleg white stocking to knee. Right foreleg white stocking to knee. Left hind leg white stocking to hock in back, to gaskin in front. Right hind leg white stocking to hock in back, to gaskin in front. Foaled April 23, 2011; Bred and owned by THOMAS TAYLOR, Lisle, NY; Sire ISLES FIELD DANNY BOY (46916) 23001-S; Dam CAERBERLLAN DIAMOND (147213) 23760-M.

TAYSON SAMANTHA - 24662-M

Mare; Black. Blaze with jagged star; point above left eye; narrowing above nose and widening to include the right nostril. Left foreleg white fetlock. Right foreleg white stocking to knee. Left hind leg white stocking to hock in rear extending to stifle in front. Right hind leg white stocking to hock in rear extending to stifle in front. White marking on left lower abdomen. Foaled May 1, 2010; Bred and owned by THOMAS TAYLOR, Lisle, NY; Sire ISLES FIELD DANNY BOY (46916) 23001-S; Dam CAERBERLLAN DIAMOND (147213) 23760-M.

THUNDERSTRUCKS SALLY - 24692-M

Mare; Black. Medium blaze with cutout top right side, continues over muzzle; lower lip and chin white. Left foreleg white stocking to mid-cannon, point to knee on outside. Right foreleg white stocking to knee, higher on inside and back. Left hind leg white stocking to below hock in back, to hock in front. Right hind leg to mid-cannon in back to below hock in front. Foaled June 30, 2011; Bred by ADAM & JENNA LUBECK, Junction City, WI Owned by DALE and LORI BEST, Zephyr, TX; Sire THUNDERSTRUCKS D'ARTAGNAN 23324-S; Dam JENSON RHYD-Y-GROES SALLY 23401-M-AI.

TRAIL-LIGHT UNDENIABLE DELIGHT - 24667-M

Mare; Black. Large irregular blaze between eyes extending down over both nostrils; lower lip white on left side extending to between jowls; white spot over left eye; black spots on left side of upper and lower lips. Left foreleg white stocking to below knee. Right foreleg white stocking to below knee in back and above knee in front. Left hind leg white stocking to below hock in back to mid-gaskin in front. Right hind leg white stocking to below hock in back to lower gaskin in front. Large white spot on abdomen; white spots on both left and right of throatlatch. Foaled January 22, 2012; Bred and owned by DANIEL TODD RIEDEL, Seville, OH; Sire SKANE SPRINGS FLASH OF LIGHTNING (47020) 23255-S; Dam TRAIL-LIGHT K. C. 23940-M.

TWOCHAIXS CRYSTAL MISS - 24678-M

Mare; Black. Wide blaze from poll to in between nostrils; extends over right eye. Left foreleg black with white spot extending from above ankle to top of forearm in front of leg. Right foreleg white stocking to top of forearm. Left hind leg white stocking to above hock. Right hind leg white stocking from below hock in back to stifle in front. Large white spot on girth. Foaled July 22, 2010; Bred and owned by LINETTE CHAIX, Cassel, CA; Sire WANDAMERE CRYSTAL BOMBADIER 23346-S; Dam TWO CHAIXS SPECTACULAR DAWN 24566-M.

TWOCHAIXS CRYSTAL ROSE - 24677-M

Mare; Bay. Wide blaze extending from poll to above eyes with cut-out around right eye, to between nostrils; white spots on left side of face. Left foreleg white stocking to mid-forearm; gray shading above ankle to below knee. Right foreleg white stocking to below knee in back to mid-forearm in front; gray shading above ankle to below knee. Left hind leg white stocking to below hock in back to mid-gaskin in front. Right hind leg white stocking to below hock in back to over gaskin in front. Large white spot on girth. Foaled July 16, 2010; Bred and owned by LINETTE CHAIX, Cassel, CA; Sire WANDAMERE CRYSTAL BOMBADIER 23346-S; Dam BADGER POCKET ESTER'S BESS 22991-M.

WANDAMERE'S QUEEN ESTHER - 24682-M

Mare; Black. Wide blaze with hook over right eye, points over left eye and below right eye; white muzzle, upper and lower lips. Left foreleg white stocking to mid-forearm. Right foreleg irregular white stocking to pastern continuing over knee on outside front. Left hind leg white stocking to hock in back to mid-gaskin in front. Right hind leg white stocking to over hock in back to mid-gaskin in front. White spot on girth and two white spots on right barrel. Foaled March 17, 2011; Bred and owned by THERESA SUND, Medina, ND; Sire WANDAMERE PATCHES 23110-S; Dam BRIGADIERS DOTTY CREST (7/8 SHIRE) B-23709-M.

WILD IRIS FARM'S MY BONNY BLUEBELL - 24674-M

Mare; Black. Blaze rounded above eyes, widens between eyes, narrows above nose, covers left nostril and half of right nostril continuing over upper and lower lips. Left and right forelegs white stockings to knees. Left hind leg white stocking below hock in back extending to stifle in front. Right hind leg white stocking to below hock in back extending to hip. White spot on left side extending from side to below belly. Foaled July 3, 2012; Bred and owned by SANDRA J. READ, Bar Harbor, ME; Sire NEW ENGLAND BOMBER 23267-S; Dam SUMMER RAIN'S LADY VIOLET 24355-M.

WILD IRIS FARM'S TALLY HO ENGLISH ROSE - 24668-M

Mare; Black. Blaze with notches below eyes on both sides leading to snip covering right nostril; small white marking on left chin. Left foreleg white stocking below knee in front extending to middle of knee in back. Right foreleg white stocking just above knee in front extending up back of leg to elbow. Left hind leg white stocking to hock, higher in front. Right hind leg white stocking to hock, higher in front. Foaled May 17, 2012; Bred and owned by MARC JAFFREY, Bar Harbor, ME; Sire DEIGHTON BLACK KNIGHT 22703-S; Dam TALLY HO KIT KAT 24285-M.

BLACK FOREST ALFIE'S GRAND FINALE - 23391-S

Stallion; Black. Blaze with point near left eye; extending over nostrils; whorl above eyes. Left foreleg white stocking to just above knee, higher in back. Right foreleg white stocking to just above knee, higher in back with a point on the outside. Left hind leg white stocking to just below hock, higher in front. Right hind leg white stocking to just below hock, higher in front. Foaled May 30, 2012; Bred and owned by JEFF BARTKO, Colorado Springs, CO; Sire BURNHAM GREEN ALFIE (46926); Dam SUMMER RAIN & BK'S LIL CHARMER 23952-M.

CHARETTE FARMS IMPERIAL JAGUAR - 23401-S

Stallion; Black. Star wider at top extending into narrower stripe and snip; lower muzzle black, little white on chin. Left foreleg white stocking to top of knee, higher point on outside. Right foreleg white stocking to top of knee. Left hind leg white stocking, ankle in back to below hock in front. Right hind leg black, small white spot from middle to back of inside pastern. Foaled September 10, 2009; Bred and owned by PAT PACE, Marlboro, NJ; Sire IONOS GOLDEN BOY (C.482) 22948-S; Dam PACE FARM ARIANA 23987-M.

ILLUSION FARMS POWER STROKE - 23400-S

Stallion; Black. Wide, irregular blaze extending slightly over right eye, to inside of left nostril, over right nostril, lower face, chin, and upper and lower lips; black spots on corner of upper and lower lips, outside right nostril, bottom of left nostril, bottom of chin. Left foreleg white stocking to lower knee in front to top of knee in back. Right foreleg white stocking to middle of knee in front, higher in back. Left hind leg white stocking below hock in back and inside extending half way up gaskin in front. Right hind leg white stocking below hock in back to mid-hock on outside; to bottom hock inside to 3/4 gaskin in front. Belly white marking midway to navel. Foaled May 20, 2012; Bred and owned by DANIEL and KATHLEEN HATHAWAY, Fryeburg, ME; Sire ILLUSION FARMS REMEMBER THE TITAN 23167-S; Dam PACE FARMS CARA 24570-M."

ILLUSION FARMS THE GAMBLER - 23399-S

Stallion; Black. Wide, irregular blaze, slightly angled to right at top with cut-out near left eye, widens at eye level, narrows above nose, widens to outside of nostrils; upper and lower lips and chin white with black on middle of top lip and black spot on right side. Left foreleg white stocking below knee in front and back. Right foreleg white stocking from below knee in front to mid-knee in back. Left hind leg from below hock in back to above hock in front. Right hind leg white stocking from below hock in back to mid-hock in front. Foaled May 5, 2012; Bred and owned by DANIEL and KATHLEEN HATHAWAY, Fryeburg, ME; Sire ILLUSION FARMS REMEMBER THE TITAN 23167-S; Dam SHIRLEY'S PRIDE OF THE SCOTS (146870) 23847-M.

MIDNIGHT STAR'S TALLY HORATIO - 23398-S

Stallion; Black. Medium blaze wider over right eye, down nasal ridge, along inner edges of nostril, ends on muzzle; white upper and lower lips and chin. Left foreleg white stocking to upper knee, irregular edges. Right foreleg white stocking to upper knee, irregular edges. Left hind leg white stocking to point of hock, sloping upward to mid-gaskin in front. Right hind leg white stocking to point of hock in rear, black points down into white both laterally and medially sloping up to upper gaskin in front. Narrow white stripe on belly. Foaled April 10, 2012; Bred and owned by BRIT C. and SHARON McLIN, New Castle, CO; Sire COWERSLANE NOMINATION 22289-S; Dam GAYDON TEJAS SPECIAL LADY 23537-M.

NORTH COUNTRY'S SILVER BULLET - 23397-S

Stallion; Gray. Wide blaze with notch near left eye and point over right eye continuing over nose and upper lip over right nostril; white on lower lip. Left foreleg white stocking to knee. Right foreleg gray with white spot on outer knee. Left hind leg white stocking to hock in back to just below stifle on outside front. Right hind leg white stocking to hock in back to above hock on outside front. Foaled April 24, 2012; Bred and owned by TERRY MICKOLS and ROBERT NUNES, Stoneham, ME; Sire NORTH COUNTRY'S NEW KING 23115-S; Dam BRIGADOON SILVER LACE 23559-M.

PERIDOTS SNICKERS - 23392-S

Stallion; Black. Blaze wide over eyes; narrowing between eyes to between nostrils and upper lip. Left foreleg white stocking to knee in back; just below knee in front. Right foreleg black. Left hind leg white stocking to hock in back; just below hock in back. Right hind leg white stocking to just below hock. Foaled May 3, 2011; Bred and owned by RUSSELL and CURTIS BRAND, Zimmerman, MN; Sire ILLUSION FARMS S.N. GREAT MAGNITUDE 22917-S; Dam PERIDOT'S KATIE 23833-M.

RM'S MOVES LIKE JAGGER - 23409-S

Stallion; Dark bay roan. Bald face with white to right eye, left eye dark; white to right nostril, over left nostril; white lips and chin; roaning on cheeks and jowls. Left and right forelegs high white stockings to mid-forearm, higher on inside continuing into chest; right front leg black spots on back. Left and right hind legs high white stockings to above hocks in back to stifles in front with roaning into hips. Mottled skin between legs and sheath. Foaled March 24, 2012; Bred and owned by TURIE and MICHAEL SORRELL, Concord, VT; Sire LEGACY'S IMAGE 23301-S; Dam TAYLOR'S AGATHA 24284-M.

ROYAL VIEW BUDDY - 23403-S

Stallion; Black. Medium round jagged star with point on left; connecting stripe narrows in between eyes, widens gradually to snip in between nostrils; lower lip white. Left and right forelegs black. Left and right hind legs white stockings to below hocks in back, above hocks in front. Round white spot on right bottom center barrel. Foaled May 12, 2012; Bred and owned by BILL TROYER, Millersburg, OH; Sire BLACK PARK SENSATION [1810-S] 23011-S; Dam ROYAL VIEW LADY HOLLY 23732-M.

ROYAL VIEW TOM BOY - 23404-S

Stallion; Black. Medium round star connecting to narrow stripe and wide snip in between nostrils; lower lip white. Left and right forelegs white stockings to knees. Left and right hind legs white stockings to center of hocks in front, lower in back. Foaled June 3, 2012; Bred and owned by BILL TROYER, Millersburg, OH; Sire BLACK PARK SENSATION [1810-S] 23011-S; Dam ROYAL VIEW LADY ISABELLE 23862-M.

ROYAL VIEW TWISTER - 23394-S

Stallion; Black. Irregular star with point near left eye; jagged stripe extending to left side of nose above muzzle; round snip between nostrils; lower lip white. Left foreleg white ankle on outside; coronet on inside. Right foreleg white sock with point on outside. Left hind leg white stocking to below hock. Left hind leg white stocking to below hock. Few white spots on lower abdomen. Foaled June 23, 2011; Bred and owned by BILL TROYER, Millersburg, OH; Sire BLACK PARK SENSATION [1810-S] 23011-S; Dam ROYAL VIEW LADY ISABELLE 23862-M.

RRF NORTON SINA KING WHO - 20262-G

Gelding; Gray. Irregular blaze to left eye widening below eyes to over right nostril. Left foreleg white stocking to below knee. Right foreleg white stocking to below knee with dip in front. Left foreleg white stocking mid-cannon in back to point in front of hock. Right hind leg white stocking mid-cannon in back to point in front of hock. Foaled June 1, 2011; Bred and owned by RICHARD and VENESA CAMERON, Ellensburg, WA; Sire ROADS END NORTON 22720-S; Dam HUSKA MILLENNIUM SHIRES URSINA 24049-M.

SIR MICHAEL - 23405-S

Stallion; Black. Wide blaze rounded at top, flaring out over both eyes, narrowing between eyes, tapering to bridge of nose, flaring to over right nostril, inside of left nostril; white upper lip. Left foreleg white stocking to center of knee. Right foreleg white stocking to below knee in front, above knee behind. Left hind leg white stocking to below hock in back tapering up to point at lower gaskin. Right hind leg white stocking to below hock in back tapering up to point at lower gaskin. White stripe on barrel, higher on left side. Foaled March 14, 2012; Bred and owned by JOSEPH MANGANO, Umatilla, FL; Sire NEW ENGLAND RAMBO 23190-S; Dam NEW ENGLAND PENELOPE 24340-M.

SPRINGHILL ROCKY MOUNTAIN MAGIC - 23407-S

Stallion; Black/Dark Bay. Wide blaze with round star extending over both eyes, narrowing near left eye, continuing over muzzle, upper and lower lips, chin, jaw. Left foreleg white stocking to above knee. Right foreleg white stocking to knee in front, to above knee in back. Left hind leg white stocking to below hock in back, to stifle in front. Right hind leg white stocking to below hock in back, to high stifle in front. Irregular white marking left abdomen; white marking from right center abdomen to sheath. Foaled May 9, 2010; Bred and owned by STEPHAN M. and JUDY L. O'DWYER, Belgrade, MT; Sire ISLES FIELD DANNY BOY (46916) 23001-S; Dam HEART MT. ROXANNE'S PANSY 23766-M.

STORYBOOK'S ULYSSES - 23408-S

Stallion; Brown roan. Bald face, white to left eyelid, dark around right eyelid; white muzzle, nose, chin and lips; cheeks and jowls white ticking. Left foreleg white stocking to just above knee. Right foreleg white stocking to mid-cannon inside, slightly higher outside; white spot inside knee. Left hind leg white stocking mid-hock in back to stifle in front. Right hind leg white stocking to below hock in back, to stifle and flank in front. White whorl on right and left neck; heavy white ticking on chest, abdomen, legs, flanks; white hairs in mane and tail. Foaled April 11, 2011; Bred and owned by SARAH A. WILLIAMS, Boonville, MO; Sire STORYBOOK'S GULLIVER 22841-S; Dam CINDY JOE TIG 23050-M.

TALLY HO DUKE'S ZEB - 23402-S

Stallion; Black. Medium star, rounded top with pointed bottom; white hairs down middle of face; white round snip on right muzzle; white lower lip. Left foreleg white sock higher in back to mid-cannon. Right foreleg white sock with dip on outside. Left and right hind legs white stockings below hocks in back to hocks in front. Foaled June 3, 2012; Bred and owned by KIMBERLY N. PARRINGTON-MURCHISON, Rifle, CO; Sire RED BRAE DUKE (46746) 23069-S; Dam TALLY HO BK'S LADY BIANCA 24386-M.

TALLY MIDNIGHT'S BEST - 23406-S

Stallion; Bay. Wide blaze with jagged round star, point over left eye, cutout below point; continuing over nose, mid-nostril on left, over nostril on right; upper and lower lips and chin white. Left foreleg white stocking over knee with dip on outside. Right foreleg white stocking over knee with dip on inside front. Left hind leg white stocking to below knee in back, to stifle in front, extending to hip, level with stifle. Right hind leg white stocking to mid-hock in back, to gaskin in front. White markings left and right throatlatch, and abdomen girth to groin. Foaled April 12, 2012; Bred and owned by LORI J. BEST, Zephyr, TX; Sire TALLY HO COMMANDER 22662-S; Dam LAZY S MIDNIGHT ROSE BUD 23740-M.

TAYSON DANNY - 23393-S

Stallion; Black. Wide blaze from below base of ears to muzzle; narrowing between eyes; over both nostrils. Left foreleg white stocking to knee. Right foreleg white pastern on outside; separate white mark on front of knee; white from pastern to below knee on inside. Left hind leg white from hock on the back extending to mid gaskin in front. Right hind leg white pastern; separate white marking from hock to gaskin. Foaled April 17, 2012; Bred and owned by THOMAS TAYLOR, Lisle, NY; Sire ISLES FIELD DANNY BOY (46916) 23001-S; Dam CAERBERLLAN DIAMOND (147213) 23760-M.

TRAIL-LIGHT UKIAH - 23396-S

"Stallion; Black. Large elongated star narrowing into strip just above nose, connecting to large snip on right side of nose; small hook over right eye. Left foreleg white coronet on the outside extending to above ankle on the inside becoming a stripe ending below knee. Right foreleg white stocking to below knee. Left hind leg white stocking to below hock in back to mid-hock in front. Right hind leg white stocking to below hock in back to mid-hock in front. Two white spots on abdomen. Foaled April 29, 2012; Bred and owned by DANIEL TODD RIEDEL, Seville, OH; Sire SKANE SPRINGS FLASH OF LIGHTNING (47020) 23255-S; Dam TRAIL-LIGHT LADY JANE 23678-M.

TRAIL-LIGHT ULTIMATE ADVENTURE - 23395-S

Stallion; Black. Blaze with slight indent above right eye and point above left eye; gradually narrowing down face; widening between nostrils; small point above right nostril. Left foreleg white stocking to just above knee. Right foreleg white stocking to just above knee. Left hind leg white stocking to below hock in back to hock in front. Right hind leg white stocking to below hock in back to hock in front. Foaled January 30, 2012; Bred and owned by DANIEL TODD RIEDEL, Seville, OH; Sire TORI'S NIGEL GOLD OF TRAIL-LIGHT 23128-S; Dam TRAIL-LIGHT MEGGS 24029-M.

Quarterly Transfers:

July 1 – Sept 12, 2012

Remember to check your documents for errors upon receipt from the Secretary. Contact us if you find any problems.

20262-G - The Gelding, RRF NORTON SINA KING WHO

from RICHARD and VENESA CAMERON, Ellensburg, WA transferred to DAVID HUMPHERYS, Zillah, WA 4/1/2012

22758-S - The Stallion, DUKE'S CINCO DE MAYO

from ELIZABETH YOUNG, DVM, Evans, WA transferred to RENATA MALO-JUVERA, Parques del Pedregal, DF MEX 6/6/2012

22909-S - The Stallion, WINDY NIGHT NICHOLAS

from CHARITY O'DELL, Trenton, FL transferred to JEFFREY R. O'DELL, Carthage, NY 8/5/2012

22911-S - The Stallion, ROCKEY TOPS MAXMILLION

from RICHARD and CINDY ROCKEY, Panama, NY transferred to BILL TROYER, Millersburg, OH 6/8/2012

23005-S - The Stallion, ECHO VALLEY MAC ARTHUR

from RENATA MALO-JUVERA, Parques del Pedregal, DF MEX transferred to SARA GABRIELA ALBARRAN RODRIGUEZ, Colima MEX 5/14/2012

23057-S - The Stallion, FORTHOFFER'S RADAR

from RICHARD C. ROCKEY, Panama, NY transferred to BILL TROYER, Millersburg, OH 3/15/2012

23239-S - The Stallion, DUA HE CHI'S RADAR

from ARLIN WAREING, Blackfoot, ID transferred to LOUISE REUBLE, Coupeville, WA 6/1/2009

23310-S - The Gelding, CLARK'S RED TOP SIR BARRINGTON

from SUSAN LYONS, Chowchilla, CA transferred to DR. ALLAN CLARK, Chowchilla, CA 6/1/2012

23347-M - The Mare, RUSKINGTON MAYFLOWER (144013)

from RICHARD and CINDY ROCKEY, Panama, NY transferred to BILL TROYER, Millersburg, OH 6/8/2012

23362-S - The Stallion, MIDNIGHT STAR'S GOLDEN BOY

from BRIT C. and SHARON McLIN, New Castle, CO transferred to DON and LINETTE CHAIX, Cassel, CA 5/2/2012

23371-S - The Gelding, LIGHTENING STRIKE'S STORMY KNIGHT

from SHARON L. McNEW, Vassar, MI transferred to JANE WILLIAMSON, Rockford, MI 8/11/2012

23401-S - The Stallion, CHARETTE FARMS IMPERIAL JAGUAR

from PAT PACE, Marlboro, NJ transferred to DIANE M. CHARETTE, Fort Kent, ME 7/18/2012

23405-S - The Stallion, SIR MICHAEL

from JOSEPH MANGANO, Umatilla, FL transferred to CHARLENE SCHULTZE, Punta Gorda, FL 8/5/2012

23596-M - The Mare, OX KILL SPECTACULAR DAWN

from ROSEMARY MORDASKY, Stafford Springs, CT transferred to JENNY COURNOYER, Jefferson, MA 2/1/2012

23681-M - The Mare, SHIR-FOXY'S MATINEIGH

from RICHARD and CINDY ROCKEY, Panama, NY transferred to BILL TROYER, Millersburg, OH 6/8/2012

23787-M - The Mare, TAYSON JANETS ANGEL

from MICHAEL J. TAYLOR, Whitney Point, NY transferred to CHANTAL PARADIS and ERIC PEPIN, Stornoway, Quebec CAN 8/8/2012

23913-M - The Mare, SUDDEN CREEK UBBY

from RUSSELL and CURTIS BRAND, Zimmerman, MN transferred to SHANE & JANIE GALLAGHER, Danbury, WI 7/15/2012

23942-M - The Mare, TALLY HO BK'S LADY SABRINA

from RENATA MALO-JUVERA, Parques del Pedregal, DF MEX transferred to SARA GABRIELA ALBARRAN RODRIGUEZ, Colima MEX 3/9/2012

24091-M - The Mare, MIDNIGHT STAR'S ARIEL

from BRIT C. and SHARON McLIN, New Castle, CO transferred to KIMBERLY N. PARRINGTON-MURCHISON, Rifle, CO 5/14/2012

24108-M - The Mare, GLENMARY NEVA

from ROBERT TAYLOR, Owego, NY transferred to STEPHAN M. O'DWYER, Belgrade, MT 8/26/2006

24286-M - The Mare, ECHO VALLEY EMMYLOU

from RENATA MALO-JUVERA, Parques del Pedregal, DF MEX transferred to SARA GABRIELA ALBARRAN RODRIGUEZ, Colima MEX 3/9/2012

24328-M - The Mare, STORYBOOK'S DOLLY

from SARAH A. WILLIAMS, Boonville, MO transferred to KENNETH and KIMBERLY FOX, Oswego, NY 11/7/2008

24332-M - The Mare, NEW ENGLAND CRYSTAL STAR

from JAMES M. and BETH A. KORNEGAY, New Smyrna Beach, FL transferred to AMY WASALASKI, Frankford, WV 10/16/2011

24337-M - The Mare, BASKIN'S E. SERENE

from BRITTANY BASKIN, Livingston, TX transferred to SHANNON CLEMONS, Summerdale, AL 5/28/2012

24381-M - The Mare, STORYBOOK'S FIONA

from SARAH A. WILLIAMS, Boonville, MO transferred to KENNETH and KIMBERLY FOX, Oswego, NY 11/7/2008

24481-M - The Mare, LIGHTENING STRIKE'S STORMY SKY

from SHARON L. McNEW, Vassar, MI transferred to JANE WILLIAMSON, Rockford, MI 8/11/2012

24506-M - The Mare, RICE CREEK CHARLOTTE

from DANIEL A. HUBBELL, Traverse City, MI transferred to KIM MARLOWE, Gaylord, MI 6/4/2012

24607-M - The Mare, ROCKEY TOPS DAISY MAY

from RICHARD and CINDY ROCKEY, Panama, NY transferred to BILL TROYER, Millersburg, OH 6/8/2012"

24608-M - The Mare, ROCKEY TOPS FAYE

from RICHARD and CINDY ROCKEY, Panama, NY transferred to BILL TROYER, Millersburg, OH 6/8/2012

24610-M - The Mare, ROCKEY TOPS MISTY

from RICHARD and CINDY ROCKEY, Panama, NY transferred to BILL TROYER, Millersburg, OH 7/18/2012

24617-M - The Mare, PASSAGE CREEK HONOR THEIR MEMORY

from PRISCILLA CRAIG, Bealeton, VA transferred to GERYL and MELISSA WADE, Bedford, VA 7/15/2012

24626-M - The Mare, HICKORY HILL SYBIL

from ROBERT TAYLOR II, Owego, NY transferred to TURIE and MICHAEL SORRELL, Concord, VT 6/23/2012

24627-M - The Mare, HICKORY HILL ADELLE

from JANET L. LONG, Epsom, NH transferred to JENNY COURNOYER, Jefferson, MA 4/27/2012

24662-M - The Mare, TAYSON SAMANTHA

from THOMAS TAYLOR, Lisle, NY transferred to MARC GINGRAS, Verner, ON CAN 5/17/2012

24663-M - The Mare, TAYSON LADY

from THOMAS TAYLOR, Lisle, NY transferred to MARC GINGRAS, Verner, ON CAN 5/17/2012

24670-M - The Mare, PASSAGE CREEK CHANTEUSE

from PRISCILLA CRAIG, Bealeton, VA transferred to GERYL and MELISSA WADE, Bedford, VA 7/15/2012

24671-M - The Mare, BADGER POCKET HH MARBLE'S GRACE

from WILLIAM C. ANDERSON, Ellensburg, WA transferred to DONNA M. WALDRON, Pomeroy, WA 12/27/2011

24676-M - The Mare, FREEDOMREINS HARMONY JOY

from PAT PACE, Marlboro, NJ transferred to LYNNE MERRITT, Hartford, ME 7/29/2012

24680-M - The Mare, FREEDOMREINS MYSTIQUE PEACE

from PAT PACE, Marlboro, NJ transferred to LYNNE MERRITT, Hartford, ME 7/29/2012

24682-M - The Mare, WANDAMERE'S QUEEN ESTHER

from THERESA SUND, Medina, ND transferred to KENNETH & MELINDA WRZESINSKI, Placerville, CA 7/16/2012

24685-M - The Mare, DCF TRULY TRINITY

from JACKIE JOHNSTON, Susanville, CA transferred to SHANE and CINDY OKANO, Armstrong, BC CAN 9/24/2011; transferred to HEATHER RIOUX, Onoway, AB CAN 2/5/2012.

WELCOME

NEW MEMBERS

Thank You for Supporting the Shire!

Stanley Arasmith
456 Cutoff Road
Plainville, GA 30733

Laura Carnahan
9090 Trevi Lane
Holly, MI 48442

J. Henry Dowdy, Sr.
3540 Wildflower Drive, Rm. 521
Greensboro, NC 27410

Janie Gallagher
3336 Big McGraw Road
Danbury, WI 54830

We welcome all our new members to our Shire Family! Thank you! Please feel free to participate in our "Meet the Members"

Jean Nock
21877 Rangeline Drive
Warrenton, MO 63383

Charlene Schultze
2300 Mangrove Road.
Punta Gorda, FL 33982

Jane Williamson
173 Hawthorne Court NE
Rockford, MI 49341

Melinda Wrzesinski
5208 Spinaker Court
Placerville, CA 95667

As I See It:

Have a concern or problem and would like to share it with the membership? Here is the column for you. The following criteria, adopted at the 2005 Annual ASHA Meeting, must be followed.

- 1) All copy must be camera ready.
- 2) No profanity.
- 3) All copy must be 1/2 page or less inclusive of signature. 1/2 page is defined as 5" X 6".
- 4) Original Signature from the person submitting it must be included.
- 5) If anyone person or position is mentioned— written permission from that person must accompany the submission.
- 6) A member may submit one article per newsletter. This includes articles signed by multiple members.
- 7) The editor may decide not to print a submission.

SAC Program Rate Change for 2012 Shire and Shire Sport Horse Nomination NOW \$ 15 Per Horse

Information can be found at:
www.shirehorse.org—under the shows tab

~ All ASHA Regional/ National
Performance Classes to count for points.
** Earn Points at many of your Local events.

The Pedigree Analysis project with Dr. Rebecca Splan of Virginia Tech is finishing up and the full report will be posted on the ASHEF and ASHA websites and printed in the Winter 2013 issue of the Member's Bulletin. A talk by Dr. Splan at one of our future annual meeting education days is in the planning stages. The report will also be published in a scientific journal (Animal Genetic Resources) in the next several months.

ASHEF recently welcomed Jan Baumgras to its board of directors and to the office of secretary for the Foundation. Jan brings a background in non-profit organizations and a strong appreciation of the Shire breed. The board also thanks Vern Stark and Shannon Taylor for their work with ASHEF as they go off the board.

In other administrative areas, ASHEF has adopted a logo, which was designed by artist Kat Moore of True Imagery in Deer Park, WA and features a Shire stallion, mare and foal. It is being incorporated into promotional and fund raising materials and will also be used on a new website which will be operational early this fall.

The Foundation will be setting up an auction for a donated 1912 ASHA National Show Trophy (Dan Patch Trophy) as a fund raiser. Details on the trophy and the auction procedure will be sent to all ASHA members when they are finalized. ASHEF sincerely thanks Gene and Vicky McCaffrey who purchased the trophy and generously donated it for the fund raiser.

If you have any questions about the ASHEF or suggestions for fund raising or for Shire related educational projects to fund, please contact any board member.

President: Marcia Mayeda - marciamayeda@verizon.net

Vice President: Paul Tyrrell - fourinhand@gmail.com

Danelle Kinney - haugenhill@hotmail.com

Gene McCaffrey - oxkill@capital.net

Treasurer: Ken Knuth - knuth@frontiernet.net

Karla Stoner - bloomforge@peoplepc.com

Secretary: Jan Baumgras - jbaumgras@meijergardens.org

Dawn Wikel - shires99@msn.com

Clark Jenson - clarkjenson@abnebraska.com

2012 All-North American Contest Update

November 15th

Show season is well underway and fall is nearing. Yes, the All-North American Contest is right around the corner! Time to start gathering pictures and show information for nominations!

The Committee is urging participants to submit nominations via email; however, postal mail is also accepted. Please see the nomination form for requirements regarding digital photos. The nomination form can be downloaded at www.shirehorse.org under Information.

The Committee would be happy to help answer questions or assist in filling out the nomination form. Your ASHA representatives' contact information can be found below.

Remember, nominations are due **on or before November 15th**.

Best of luck to everyone!!

Danelle Kinney, Chair haugenhill@hotmail.com 651-380-9600

Janet Long janet@northeastshires.com 603-930-6975

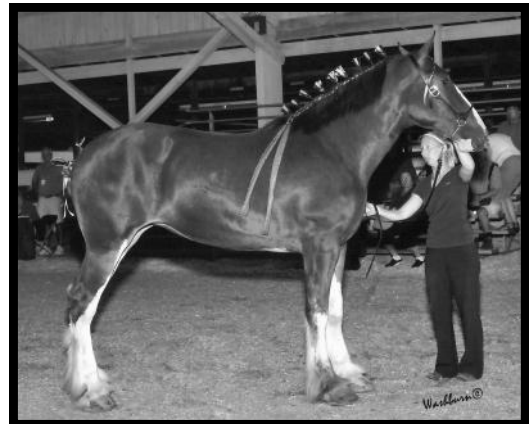
Karla Stoner bloomforge@peoplepc.com 301-874-3250

Jenny Cournoyer rollergirl@yahoo.com 508-829-8225

Submitted by,

Danelle Kinney

All-North American Committee chair



MEET THE CANDIDATES

2012 IS AN ELECTION YEAR FOR FIVE POSITIONS ON THE BOARD OF DIRECTORS

Candidates are listed in alphabetical order and are responding to the questions listed below. Responses are numbered accordingly.

1. Briefly state your ability (financially and time wise) and commitment to attend membership and board meetings and do committee work should you be elected.
2. Write a brief statement of your past and present involvement with ASHA and with Shires. Please include answers to the following questions:
Do you own Shire horses?
If so, what is your role as an owner? (breeder, exhibitor, etc.)
What are your accomplishments with Shires?
What are your future goals for your Shires?
What goals would you like to see for ASHA?
3. Write a brief statement outlining the strengths and contributions you think you can bring to the ASHA Board. Please include answers to the following questions:
What benefits/services of ASHA do you utilize? (registering/transferring horses, ASHA sponsored shows, etc.)
How do you currently participate in ASHA? (committees, shows, meetings, other)
4. Please briefly discuss the three ASHA issues you consider to be the most important as well as what personal goals you might have for the ASHA Board of Directors over the next four years.

Abbreviations used: **ASHA** – American Shire Horse Assoc., **BoD** or **BOD** – Board of Directors, **ASHEF** – American Shire Horse Educational Foundation

James P. Edmiston

311 Horton Road
Edgewood, NM 87015
Phone: 505 286-6233 (H) 505 238-9288 (C)
Email: Jedmis1@us.ibm.com

1. Although I work full time, I have a flexible schedule and the ability to attend all ASHA meetings and perform committee work as required.
2. About 6 months ago, I acquired 2 young shires, as I was looking for a draft horse that I could ride for pleasure. I have had Belgians and Percherons prior to this; however I have been curious of and drawn to the shire breed. Draft horses have such a presence and unique personality, that while I ride my 16+ hand Missouri Foxtrotter, I like having a draft horse as well. I have done extensive research on the breed and am impressed by their place in history. I am the Safety Officer for the New Mexico Mounted Search and Rescue unit – we perform mounted operations for the NM State Police. I will use my shires for Search and Rescue missions and other official functions such as the Albuquerque International Balloon Fiesta where we patrol amongst 80 – 100,000 people daily and over 800 hot air balloons. I will be training my shires to both police and search and rescue standards – but have them retain their gentle nature. My unit also participates with several organizations that provide horse rides to handicapped and autistic children and I know that the shires will be great at hippotherapy. We are frequently interviewed about ourselves personally and our horses and this can only provide positive exposure for the Shire breed.

As I am new to the breed, I have few firm goals for the ASHA. I want to continue to learn about and promote the Shire horse. To me, the breed needs to stay true to its roots, however continue to evolve in this day and age. Breeding standards for registered shires need to be maintained, however selective cross-breeding could be further encouraged to allow for participation in the increasingly popular sport horse category.

3. The main contribution I can make to the ASHA Board is my enthusiasm for the breed and my willingness to fully participate in Board matters. New members are the lifeblood of any organization. They can bring new idea, observations and suggestions I bring a strong work ethic (I am a retired Army officer), the ability to conduct extensive research on a subject and share my findings both in written form and vocally. I also try to be as unbiased as possible and make the correct decision after considering all sides of an issue. I will be a strong advocate for the breed here in the Southwest and can promote Shires and the ASHA through my extensive horse industry dealings here in New Mexico. Just by riding them at the Balloon Fiesta in October every year will expose the Shire breed to thousands of people from all over the world.

While I have only been a ASHA member for 6 months, I feel the best way to participate is to jump in and volunteer. There are not that many shires here in New Mexico, so by being a member of the ASHA BoD's, I can both communicate with other Board and Association members, but also promote the breed here in New Mexico as well as surrounding states such as Colorado, Arizona and Texas.

Continued on next page.

Do You have Address – Email changes?

*To make sure your service is uninterrupted,
Please be sure to inform the ASHA office
Of any changes in postal address, email address
Or phone number*

Office hours:

9am to 3pm CDT Tuesday, Wednesday, & Thursdays.

Myrna Rhinehart Secretary

American Shire Horse Association

P.O. Box 408 ~ Lake Delton, WI 53940

Phone: 888-302-6643

email: secretary@shirehorse.org

James P. Edmiston Continued:

4. First off, the ASHA needs to be financially stable. I will work to ensure that the Association not only stays "whole" financially, but also look for other sources of revenue that can augment membership and show revenue. Secondly, we need to continue to promote and show the breed, both at shows, and at other multi-breed "competitions such as the American Competitive Trail Horse Association, who sponsor the televised "America's Trail Horse Competition" every year. This would help increase the membership and sales of the Shire horse. Thirdly, we need to stay true to the roots of the Shire horse breed. They are still a workhorse and need to have a real job. There is nothing more beautiful than a hitch of Shires pulling a wagon or plowing a field.

In addition, we should promote intelligent reproduction with our breeders. Here in the Southwest, with the drought and skyrocketing hay and feed costs, I see more horses being abandoned because of over breeding and owners not being able to afford to maintain their horses adequately. All of our horse breeds, not just Shires, deserve to live long, productive and healthy lives.

Travis Howell

2365 Clinger Dr.
American Falls, Idaho, 83211
Phone: (208) 681-9299
Email: howetra2@isu.edu

1. If elected as a board member I will attend membership and board meetings. I will fulfill all duties that pertain to the position.

2. I am co-owner of Howell Brothers Stable. Along with my brothers Casey and Jeremy we breed, raise, and show Shire horses. I have attended shows all over the western states and parts of Canada. The Howell Brothers purchased their first horse in the fall of 2005. Our accomplishments include 2007, 2010, and 2011 American National Champion Shire Mare and Supreme Shire in 2010 and 2011. We also had Reserve Grand Champion Shire Stallion at the 2009 National and Junior Champion Stallion at Pomona in 2011. We have attended four of the seven American National Shows since owning Shires. We have been dedicated supporters of the All-North American contest and received All-American three year old mare in the inaugural year of 2010. In 2011 we qualified all three of our show horses and received All-North American honors in the yearling stallion, three year old mare, and yeld mare categories. We frequently attend the Canadian National Show in Calgary and have attained Grand Champion Shire Mare and Reserve Grand Champion Stallion honors twice and Supreme Shire once. In 2011 we made our debut in the hitch classes with a shire mare in cart. The Howell Brothers were featured in the spring 2012 issue of the Draft Horse Journal. We were humbled by the opportunity to be featured in such a revered magazine. Our future goals are to continue breeding quality horses that can achieve the approval of not only the shire faction, but all draft exhibitors. Our goal is to help the Shire breed overcome the perception of being a second rate breed. I would like to see the Shire horse viewed as a breed on equal footing with the other major draft breeds. I would like to see ASHA continue promoting the breed through show sponsorship and education. Some other major goals that I would like to see for ASHA is to be fully recognized by the Shire Horse Society and to hold a Shire World

Travis Howell Continued:

Show that would bring all shire breeders and exhibitors together to show off this spectacular breed.

3. I utilize registration of horses and attend shows sponsored by ASHA. All of our horses are registered with ASHA. My strengths as a board member include a formal education with a bachelor degree in Health Care Administration and I will graduate in May of 2013 with a master's degree in Business Administration with a finance emphasis. I have a strong understanding of financial concepts and theory. My education has cultivated strength in leadership, business administration, finance, accounting, management, marketing, computer information systems, and other areas. I also have extensive experience with the Shire breed. I have been raised around Shires and have attended shows from a very young age. I am a student of the breed and other draft horses and have extensively studied conformation, pedigree, and history of the breed. I am passionate about the Shire breed and want to work with other members to have the Shire thrive. I work well in teams and understand team dynamics. I understand that being a board member of a non-profit association is not an easy job and I will dedicate my time and energy to cohesively work with members to improve the situation and quality of the Shire breed. I feel that my education and experience with Shire horses has prepared me to be an asset to the board and association.

4. I feel that the three major issues ASHA faces are communication, financial stability, and education of breeders. Communication is a key component to a successful association. This association is for the membership and communication between the members and the board must be improved. Elected representatives of the members need to hear the good and the bad. For the association to perform at an optimal level, membership input needs to be considered and used for decision making purposes. Opening up additional channels and making the board more accessible to members is a must. The membership is the life blood and purpose of the association and communication between them and the board needs to be improved. Financial stability is an issue that is always facing a nonprofit association. The idea of continually increasing fees is not the answer. The ASHA has some of the highest fees of any major draft horse registry. Other tactics must be implemented to keep the association solvent yet retain reasonable fees. The membership and board must work cohesively on a solution to keep financial stability within the association. The last issue I feel that the association faces is in the direction and knowledge of the breeders. New members need to be educated and cultivated by knowledgeable and reputable Shire breeders. Having breeders' simply breeding horses without the knowledge and understanding of breed standards and quality is detrimental to the breed. ASHA must find a common direction and help to educate breeders on improving quality through selective breeding. ASHA needs to educate breeders on quality, standards, and the purpose of the breed. Although we do have a select number of breeders who do understand quality and breed improvement, too many newbies are learning from breeders who are simply breeding for color; 4 whites and a blaze.

I hope to have the opportunity to serve the members of this association and appreciate the occasion to be considered for a board position.



Danelle Kinney

21847 310th Street

Red Wing, MN 55066

Phone: 651-380-9600

E-mail: haugenhill@hotmail.com

1. I plan to continue supporting ASHA through committee work and upon election I plan to attend the necessary meetings to fulfill my board duties.
2. The Shire has been part of my life for nearly 20 years now. My farm, Haugen-Hill Shires, is currently home to five Shires, with mares in foal for 2013. I take care of the breeding, nutrition, and training aspects. My passion is fitting horses for show though.

I show our horses at various levels including local events and expos and at ASHA Regional and National shows. You'll typically see me in the halter ring, but also in cart and riding classes too. I have bred two reserve All-Americans and additionally own an All-American mare that won her class in 2010. I plan to continue breeding and showing horses as time permits.

I am an ASHA show coordinator of which this will be my 8th year. I coordinate the WI show and in the past, the MN show. I am currently working on locating another venue in the Midwest for Shire exhibitors.

I also volunteer time as the All-North American Contest Chair as well as the Youth Committee Chair. I also serve on the Show Committee and am currently a Board of Director for ASHA and ASHEF. I enjoy educating the public at venues and expos about the Shire. I want to continue being an advocate for the membership where thoughts are brought forth and acted upon. I plan to continue the quest of updating our association as the economy changes. One change I am proud of is the hiring of Myrna, our secretary. I feel that customer service has returned to a priority and feel that with changes such as these, our association will continue to become stronger and more desirable. I would like to see membership be sustained, at the least, but would like for it to grow. Through education and exposing the public to this wonderful breed are a couple ways we can accomplish this goal.

3. I feel I bring several unique qualities to the ASHA Board. Not only do I own and operate my own small breeding farm, but I also work a full-time job. I feel that I have excellent organizational skills, as well as have the ability to stay focused. I volunteer a lot of time to ASHA and feel that I have been successful thus far. I also feel that my training as a manager can help facilitate meetings as well as re-direct discussions that get off topic. I feel that through my college education I've got a good understanding and background of math and accounting to aid in financial decisions. In owning your own business, these tools are put into effect on a daily basis.

Of the services ASHA offers, I contribute via registering and transferring horses. I also participate in ASHA sponsored shows where I not only show, but also serve as a show coordinator. Currently, I participate in ASHA in a number of ways. They are: current Board of Director for ASHA and ASHEF, Show Committee, All-North American Contest chair, and Youth Committee Chair.

4. For me, I want to focus on membership. From that topic I have three goals: expand our current group of volunteers, grow the membership, and continue striving for better communication. ASHA is only successful when its members dedicate time to the organization. In other words, the Association is what we make of it.

With that, I would like to get others involved to serve on Committees

Danelle Kinney Continued

Page 29

or offer time in other areas. When I look to expand the committees I Chair, I often find that people just didn't know who to contact to offer time or that they did not know what work would be involved. I would encourage anyone willing to offer their time to call any of the Committee Chairs to find out how you can help. Any help is welcomed!!

I would also like to continue expanding the membership. I feel that by making Customer Service a priority, whether in the office or as a BoD, members feel welcome and appreciated. Creating a desirable environment will encourage others to join and current members to stay.

Lastly I would like to continue improving communications from the Board to the Membership and vice versa. With changing times, our world has become very technologically based. My goal is to not forget those who do not have access to computers or the internet. I do have a phone and I do have a mailbox, so encourage those means to be used if you need a BoD's attention for an issue, an atta-boy, or what have you.

Sharon McLin

P.O. Box 957

Silt, CO 81652

Phone: 970-876-5979 (H) 970-379-8569 (cell)

Email: msbshire@sopris.net

1. I'm committed to full participation, including annual meetings, conference calls and online communication. (Attended most annual meetings last 30 years; currently on two committees.)
2. Brit and I have owned Shires for over 30 years, raising 2-4 foals each year. I've been a life member since 1979, served two previous terms on the board and two 2-year terms as president. Served as ASHA secretary (1996 – 2002 paid and July 2011 – Feb 2012 volunteer) and assistant secretary (2002 – 2003 paid). We've exhibited since 1978 at 19 national shows, including Sacramento (2x), Eugene (2x), LA (5x), Blackfoot, Pueblo (5x), KILE (2x), Rifle and Oklahoma, including hitching at six of those locations; numerous regional shows including LA (22x) and Rifle (6x); open shows (Stock Show, Sandpoint, Boise) and several other California shows.

Exhibited numerous national and regional grand, reserve grand and junior champions. Cooperated with UC Davis in early equine reproductive technology advances, resulting in first draft horse foal from frozen semen (1989), first draft horse foal from frozen embryo (1991) and early draft horse foals from embryo transfer (1987).

Compiled first modern update of ASHA rules (1988) and led board in adopting blood-typing and parentage verification as warranty of pedigree, and later conversion to DNA. Organized education days for several annual meetings, including speakers / clinicians such as Josh Lyons, Steve Bowers, and veterinarian for US Olympic team. Paid for nationally-known organizational consultants to speak at 1995 and 2002 board meetings. Introduced first accounting software for ASHA (1987) and obtained registry software (1996). Worked with LA Fair to develop regional / national show. Secretary / organizer of ASHA's 1985 100th anniversary show in Blackfoot.

Modest; we may not show a 6-horse hitch again, but will continue breeding and exhibiting quality Shires as possible.

Membership growth; encourage past members to rejoin.

Financial responsibility, including balanced budgets and promotional activities that benefit all Shire breeders and owners. Encourage more member-based promotions such as Equine Affaire.

3. Strong historical knowledge of ASHA's development, as an active participant for many years; understanding of non-profit law and IRS requirements; many years experience on both for-profit and non-profit boards, and an understanding of the fiduciary responsibilities of board members.

Willingness to travel at my own expense to help promote ASHA at events (past travel to booths at Equine Affaire, Small Farmers Journal auction, Equitana, Stock Show, Sandpoint) and to become a better educated board member (22 years attendance at National Pedigreed Livestock Council meetings and several draft horse presidents' and secretaries' meetings, almost all at my own expense).

Understanding of financial reporting and registry policies.

Understanding the importance of every member to the Association, and a willingness to listen to every member's ideas.

Ability to focus on the impact of board actions on ASHA as a whole rather than on me personally.

4. Continue the financial and customer-service turn-around begun since the last election, looking for ways to operate ASHA in a business-like manner while utilizing members' volunteer skills to expand beyond what ASHA can currently "afford"; watch the budget while rewarding outstanding staff performance; listen to Myrna (and others) who come to us with "fresh eyes" and see ways that we can change how we operate to be even better.

Reach out to former members; they form a very targeted audience for growth if we can get them back.

As always, **communication** (internally and externally) will continue to be critical. We must develop a standardized "presence" (hence the establishment of a marketing committee) which displays ASHA and Shires at our best in a number of diverse venues. We can cross-pollinate, so to speak, by providing the same educational information in our newsletter, on our website, on Facebook, as handouts when we do a promotional booth, and elsewhere.

There are three particular issues I would like to work on within ASHA: reviewing our registration rules to see if we need to modify them; working to simplify our election process and return to a true secret ballot; and expanding our merchandise offerings, to broaden this income stream for ASHA.

I would greatly appreciate your support in this election. Please contact me if you have questions, ideas, or comments about how to help ASHA move forward. Enjoy your Shires!

Kim Parrington-Murchison

0185 CR 225 Rifle, CO 81650

Phone: (970) 625-1142

Email: thshire@sopris.net

1. I attended the last 4 annual BOD meetings. I attended the last 4 annual BOD meetings. I've attended all but two quarterly conference calls. I will continue to attend meetings.
2. My family has been breeding, raising, and showing registered Shire horses for over 40 years. We currently own 16 registered Shire horses including stallions, mares, geldings and foals. We raise 3 to 5 registered Shire foals a year and exhibit our hitch of

Kim Parrington—Murchison Continued:

6 home-raised registered Shire geldings at venues all over the U.S. We exhibit our Shires in halter classes as well as the hitch classes at shows. We also strive to take our Shires out into the public as much as possible to educate and inform the public about the wonderful Shire horses.

My goals with my Shires include educational opportunities that allow me to take my Shires out into the public and introduce the public to the wonderful Shire horse. There is nothing better than to give someone their first positive experience with these amazing gentle giants that I love so much. I would like to see the ASHA expand its educational and promotional efforts on behalf of the Shire horse. I feel that the ASHA is headed in the right direction, and I would like to continue on the BOD with this forward movement.

3. We utilize ASHA services on a regular basis. We register our Shire foals each year and also utilize transfers when horses are sold. We try to attend at least 1 ASHA sponsored show each year. I've attended the past 4 ASHA BOD annual meetings and ASHA sponsored educational days.

I've enjoyed my last 4 years serving on ASHA's BOD. During my time on the BOD, I've helped to re-establish the Breeder's Brochure that is used at promotional events all over the U.S. to educate and inform about the Shire horse. I've helped to re-establish an educational newsletter/bulletin that works on a quarterly basis to educate and help our ASHA members with interests/issues that are important to them. I've served on several committees including the show committee and been instrumental in continuing a Mountain States Regional Shire show as well as re-establishing a Shire show at the Colorado State Fair. I've helped to correct and re-align ASHA's bookkeeping and financial data through my position as treasurer. I believe that the ASHA is headed in a positive direction and would like to be a part of continuing to help the ASHA move forward into the future.

4. a. The first goal that I have for ASHA is to continue to improve our customer service record. I want to ensure that everyone that calls our office or BOD members has a positive experience and feels that they are being "heard."

The second goal that I have for ASHA is to increase our educational and promotional efforts on behalf of the Shire horse.

The recent newsletters have done a great job to start these efforts, and I would like to see us move forward and strive to reach, not just ASHA members, but more of the public to inform and educate about the Shire horse.

- c. The third goal that I have is to continue to move the ASHA toward a stable financial future that would allow us to invest in the promotion of the Shire horse in the U.S.

Rob Rich

PO Box 117

Baraboo, WI. 53913

Phone: 608-477-1524

Email: info@bridlewoodshires.com

1. I will be dedicated to attending annual meetings (including teleconference meetings), work with committees and serve the association to the best of my aptitude.
2. Nearly a decade ago I obtained my first horse and that horse

Rob Rich Continued:

ended up being a Shire. I was impressed with the large numbers shown at the national shows in Harrisburg. There was a large membership and what seemed like many breeders dedicated to growing the breed. I produced my first foal in 2005, a number of them since and hopefully many more to come. My goals are to become a better breeder, produce cart/hitch prospects and promote them along with my sport horses. I would like to see more Shires in harness, competing and showing the other breed owners this breed can hold its own. At one time I read an article in Draft Horse Journal which made me realize how important education is. This article has changed my views in breeding and what I want to see with my own Shires.

It would be nice to see ASHA back to the membership numbers it had 10 years ago. I have spoken with several other Shire owners and am surprised by how many of them are not members. Over the years I have offered help in different areas and will continue to as long as I am involved in Shires.

3. I helped developed the first Shire futurity in promotion with the 2009 national. I've designed ads used in print for ASHA (KILE, MN, Education Day and recent DHJ/Newsletters ads). I assisted in the development of Premier Points. I've had the pleasure to help many new Shire owners and members get started within the breed.
4. ASHA needs to improve in membership (numbers and interest), marketing (selling the breed and growth) and management (following ASHA's Director's Pledge, By-Laws, Education and Procedures). Personally, I would like to see ASHA put the focus on growth and push back some projects until the association is solid enough to bring it back.

If elected, I pledge to: follow by-laws, work on increasing membership numbers, promote breeding, concept ways to keep interest and better communication, actively work on completing ASHA's BOD action points, develop a new website that markets the Shire, membership and growth. I would also like to work with the education committee and editor on education type articles to promote quality breeding and growth. Assist in promoting the American Shire Horse Educational Foundation, and most important work with members, fellow BOD members and officers to get projects completed.

I would appreciate your vote and welcome any questions and concerns.

Audrey-Lyn Stockton

4821 Rutters Drive, Laporte, CO 80535
Phone: (970) 420 8050, (970) 493 6837
Email: SVentures@msn.com

1. As an active member the expense & time for meetings are part of my normal plans. I expect an increase in the time commitment.
2. Our first Shires became part of the herd in 1981. The herd has included as many as 15 Shires. Currently 9 Shires & 3 half Shires, do farm-work, are shown through 6-up, are ridden or are just growing with us. I believe in breeding for a useful purpose, they must prove themselves in harness first and enjoy the work before being used for breeding. The horses we use most are home-grown. Putting a home grown hitch into the arena with our son or daughter driving is always a proud occasion.

Audrey-Lyn Stockton Continued:

Page 31

Public interaction with Shires is important to us. Participation in shows and exhibitions has been of a more local nature in recent years rather than the national travel we used to do. We have plenty of opportunities for public interaction with the Shires through involvement with the Colorado Draft Horse Association and Colorado State University along with our other activities. Interns have been an important part of our program, many continue with us long after their formal internship period.

Improved services; registry, education and marketing are broad goals for ASHA. Codification of rules, policies and guidelines so everyone has access to current versions would be a positive step. The goal of doing fewer projects better to benefit the overall membership rather than trying to please a few members here and there with various programs seems appropriate.

3. I usually attend ASHA's annual events (education days & meetings) and been an active member of several committees over time. Having served a 6 year term on the board in the late 1990s, part as President, I have experience with and understanding of the commitment required and the possibilities for the future. Various committees I have served on historically include: member services, nominating, show, education, personnel, by-laws and finance.

Most recently the finance committee has had my attention. I've trained the new secretary and others in the use of QuickBooks-online while getting the data into more user friendly arrangement has improved the understanding of ASHA's financial circumstances.

When asked to describe my vocation "making things happen in an organized fashion" has been the answer. Risk management, educational training, financial and human resource management are some of the skills I use regularly and bring to ASHA.

4. a. ASHA is overdue for a full by-law review and update. This is significantly different form adding amendments. An overall update includes making sure current laws are met and technology changes are accounted for, so operations go more smoothly and everyone knows what to expect.
b. A focus on member service. Answer the question: Does whatever is being done or proposed improve ASHA's services to our members? The organization belongs to ALL the membership. Our commonality is interest in the Shire Horse.
c. Development of a clear and interconnected marketing program promoting the Shire and ASHA. Brochures, shows, trade events seem to be haphazard currently. A defined marketing program makes each piece more effective.

Susanna Thompson

PO BOX 873
Clayton CA 94517
Phone: (925) 513-1510
Email: Quelah@aol.com

1. I have my own successful business which allows me both the time and the funds to attend meetings and participate on committees.
2. I fell in love with the Shire Horse when I attended my first draft show, and have since owned 4 Shires. While I purchased my first Shire to use as a riding horse, my second Shire introduced me to driving. Driving my Shires has taken me far beyond my wildest dreams. With my first driving horse, at his and my first show, an

Susana Thompson Continued:

American Driving Society recognized pleasure show, we earned a reserve championship and had our picture in The Whip, the ADS magazine.

With my second driving horse, Jet, I have successfully competed in the Ladies Cart division at West Coast draft shows. We have placed well in the open draft division, as well as garnering back to back wins in the Shires Ladies to Drive class.

Last year I served on the ADS committee to revamp the rules for the draft horse division, the intent of the committee was to make the rules more relevant for a broader spectrum of draft horses-to be more inclusive, as well as to clarify and simplify them. After successfully serving on that committee, Jet and I attended an ADS show and illustrated the point I had made on the committee that a hitch horse should be welcomed at an ADS show by winning every class we entered.

We work very hard to make a positive impression of the Shire Horse when we compete. Those efforts have been rewarded by a feature article about Jet in Driving Digest magazine and this summer Jet and I were chosen for the cover of the Draft Horse Journal, the first time in nearly 20 years that a Shire has been so honored.

Also this summer, Jet and I were asked by the Draft Horse Classic to represent the Ladies Cart class in the draft horse exhibition at the Sacramento Horse Expo, the largest event of its kind in North America.

Jet and I plan to continue promoting the Shire Horse and I would like the ASHA to look for more effective ways to do the same.

3. I believe my varied background in horses will be strength to the ASHA. Although professionally I have spent the most time in the hunter/jumper and dressage world, I have participated in one way or another in most of the equine disciplines. I think this gives me the ability to recognize and value the different ways people choose to use and enjoy their horses. Ride/drive/farm/hitch, all have value to those that do them.

When I have had the opportunity to register a horse with the ASHA I have always done so, and in the past I have very much enjoyed the ASHA message boards. It was on the ASHA message board in early 2007 that I noticed some members expressing disappointment with the caliber of the awards given at ASHA regional and national shows. One person made the point that their kids got better ribbons at 4H shows.

I contacted Marcia Mayeda, the 2007 National Show coordinator and suggested significantly upgrading the quality and size of the ribbons, as well as giving neck ribbons for champions and reserve champions. I also offered to sponsor the ribbons to make it possible and she agreed to do it. I attended the 2007 National as well as the 2011 National and have attended the West Coast Regional shows in-between.

4. Three issues I would consider important to the ASHA and the Board of Directors would be communication with the membership, making sure that ASHA sponsored activities are relevant to the majority of the membership, and taking a look at what the ASHA is doing right, and where it needs to improve to better serve its members.

I believe that in recent years, the Board of Directors has made improvement in listening to the members of the ASHA, but I also feel that can continue to improve. From time to time, members have expressed the feeling that the Board is unapproachable, or not wholly receptive to member input.

Our presidents have requested member input on numerous occasions, but that hasn't seemed to be enough. I believe it needs to fall to the individual board members to reach out and make contact with the membership whenever there is the opportunity, and get one on one direct feed back from the members to find out if they feel their needs are being met.

To verify that ASHA sponsored activities are benefitting the majority of the membership, consider what portion of the membership is participating in those events. If minimal, then participation needs to be improved, or sponsorship should be more limited.

That leads to the third directive for the Board. There are 4 major draft breeds and associated registries in the United States. 3 of them are successful in numbers of members and numbers of horses. We are not one of them. I think that the Board should take a serious look at those other registries, how they do business, how they serve their members, and where their success comes from. After identifying the reasons for their successes and comparing them to the way that the ASHA does things, I believe we should see if some of their different ways of doing things would be beneficial ideas for our association..

Successful Shire Stallion Showing in Dressage~

Silver Drache Farm's 2007 Shire stallion Mufasa produced yet another solid performance against a very competitive field during the MSEDA (Mid-South Eventing and Dressage Association) Dressage at the Kentucky Horse Park I and II September 8-9. Mufasa, aka 'X', turned in a fantastic 69.8% at Training Level Test 3 on Sunday in front of Judge Maureen John (USA). Several competitors and spectators alike commented on how light he seemed on his feet, and how balanced he is for such a young draft horse.

At a solid, and perfectly proportioned 18 hands, he presents a lovely picture under saddle and has found his calling in the Dressage ring representing the majestic Shire. Owner Andrea Bradley-Stutz (Eppley) is thrilled with how competitive he has been against seasoned 'traditional' dressage horses. 'Obviously, our goal is not the Olympics, but turning in correct, lovely tests with a five year-old full draft proves how versatile, trainable, and willing the Shire breed is. Our hope is that this will help open the market to more Shires; there is most definitely a place for Shire cross-breds in the Dressage ring - if for no other reason than the fact that the quiet, calm mind of the Shire can create a really nice partner for the adult amateur rider who might be overfaced on a traditional warmblood'. Mufasa will conclude his first USDF show season at Harmony in the Park Fall Dressage in Edinburgh, Indiana September 15-16, and will spend the fall and winter schooling First Level at home, attending clinics taught by Lou Denizard and Andrea Bresee, and preparing for the 2013 season.



Proposed changes to ASHA Bylaws

Changes to the Bylaws may be made at any election, and you will be receiving a ballot at the end of October to vote on these changes as well as electing 5 directors during November. (Only those who have been members for at least 6 months will receive a ballot, as specified in the Bylaws.) Each question will be decided by a simple majority of those voting on it. The complete current Bylaws are available on the ASHA website under the "Information" tab in 'Documents' or under the "Members Only" tab under "Documents". There will be 2 questions on the ballot. The first covers several minor issues, such as correcting section numbers, replacing a reference to telegrams with one to email, clarifying language, and removing references to dates which have now passed. The other question introduces a new idea and is presented separately.

Editing changes:

Existing wording is shown in ***bold italics***; new wording is underlined. Unchanged wording is normal text.

Question 1: Shall the following minor corrections and clarifications be approved?

Article III Section 2 change "...to all persons, ***firms, and/or corporations*** who..." to "...to all persons or entities who..."

And change "***Representatives of corporations, businesses or other*** legal entities..." to "Legal entities shall not be eligible for lifetime memberships, although an individual who is a life member may also serve as the representative of an entity."

Article III Section 4 change "Any ***person, firm, and/or corporation*** desiring..." to "Any individual or entity desiring..." and add the word "...lifetime, annual, corporate, or youth..." as well as the sentence, "An entity shall submit documentation of its status with its application."

Article III Section 5 change "...in accordance with Section ***6***..." to "...in accordance with Section 7..."

Article III Section 8 change all three section numbers cited: ***6*** to 7, ***3*** to 4, and ***4*** to 5 (these Section numbers were not updated when Section 3 was added several years ago) and add at the end "...Section 5 of this Article, as long as reinstatement occurs at least six months prior to any election or other matter submitted to the members." (to agree with Section 5)

Article III Section 10 change "...the member ***hold*** decision-making.." to "...the member holds decision-making..."

Article V Section 2 at beginning of last sentence, delete "***Starting in 2011***" (no longer needed)

Article V Section 7 change reference to "***telegram***" to "email" as follows: in first sentence, change "...or ***telegram*** to..." to "...or email to..."; delete sentence beginning "***If notice is given by telegram...***" and replace with "Electronic mail shall be deemed delivered if no delivery failure notice is received from the server."

Article V Section 11 change last word from "***therefore***" to "therefor" (Therefor means for this, for that or for

it, which is appropriate in this context. 'Therefore' means as a result of or consequently and is not appropriate in this context.)

Article V Section 14 delete entire Section (refers to transition terms 15 years ago)

Article VI Section 2 change "...the secretary ***does not have to*** be..." to "...the secretary need not be..." and delete the phrase "***starting in 2011***" in the same sentence (no longer needed)

Question 2: Shall Article V. Section 3 be amended as follows?

Change the second sentence from: "The board of directors may remove a director for failure to attend ***two*** consecutive ***annual*** meetings of the board of directors unless such absence is excused by the board of directors ***at the time of*** such ***annual*** meetings."

To: "The board of directors may remove a director for failure to attend any two of four consecutive regular or special meetings of the board of directors unless such absence is excused by a vote of the board of directors during such meetings."

The board feels that participation in the quarterly meetings (which were not held at the time the Bylaws were adopted) is equally important. This change also clarifies the process by which the board may excuse an absence.

2012 Show Schedule:

Note: Qualifying shows for *the All North American Contest* are coded as follows: AA show (1st – 4th), A show (1st – 3rd), B show (1st or 2nd), C show (1st only)

The 2012 NATIONAL SHIRE SHOW (AA) at the **Keystone International Livestock Exposition** at the Farm Show Complex, Harrisburg, PA will be underway when you receive this issue of the Bulletin. Results will be posted on the ASHA website and in the Winter 2013 issue of the Bulletin.

Last show of the 2012 season:

Georgia National Fair, Perry GA (C) – (Local show) – October 12-13. (www.georgianationalfair.com). Judges: Beth & Don Palmer, Ontario, Canada. Pre-entry deadline, Sept. 15. Late entries accepted. Show Secretary: Barbara Hawkins Phone: 864-895-4922. Premium list now available on the website.

MARK YOUR CALENDARS

THE 2013 NATIONAL SHIRE SHOW WILL BE HELD AT THE IOWA STATE FAIR IN DES MOINES

Fair Dates 8 – 18, 2013

Watch for show dates and other details on the website and in future Bulletins

For additional information on ASHA shows, visit www.shirehorse.org and click on 'Shows' and then 'Upcoming Shows' on the menu and scroll down to the show you are interested in.

NOTICE

The Show Committee is re-evaluating the existing show program to determine if changes should be made. Any suggestions or comments on shows from members would be welcome. Please contact the Chair or any committee members with your thoughts.

What is a Shire Part 4 ~ By Arlin Wareing

The next item in the Breed Standard deals with size which is something that shouldn't be a problem, but has become a major issue.

The ASHA Standard for stallions reads, Height; Minimum 16-2 hands and upward. Average 17-1. Geldings same as stallions, mares slightly smaller.

The SHS Standard for stallions reads, Height; Standard 173cms (17 hands) at maturity. Average about 178 cms (17-2 hands). Mares 163 cms (16 hands and upward). Geldings 168 cms (16-2 hands and upward). Weight is not mentioned in either standard.

These figures may seem a little small to many of you, but if properly measured and truthful, I would guess they are not far off of the actual height of our horses. The two words of real meaning are properly, and truthful. Draft horse people in the most part tend to stretch the height of their horses a little, but this is one area in which the Shire people seem to outdo the other breeds. Many shire owners have this misinformation down to perfections. I don't know if it is just plain lying or if people simply don't know how to measure a horse properly, I would hope it is the latter one. It does the breed, and the breeders harm when we see some of the advertisements. It has been such a common practice that truthful persons are being harmed. The old saying goes something like this; the first liar doesn't stand a chance, inferring other liars can always top the story. I hear people say all the time that height doesn't matter, and then turn around and stretch the truth by two inches or more. I'm also guessing that some of these stories come from people who have never measured their horses. Some seem to think all drafters are 18 hands so that is what they say their horse is. If a friend knows his horse is the taller of the two, so he says his horse is 18-2, and the stories build from there. Another old story goes; it takes a big dog to weigh a ton. It also takes a big horse to weigh a ton, very few do. The same is true of height. It takes a big horse to stand 18 hands and few do. I have measured thousands of shires, and while I can't tell you the exact percentage, I would guess less than 5% were over 18 hands. The number making 19 hands is so small they hardly exist, yet the stories we hear you would think half the breed was over 18 hands, with many 19 plus.

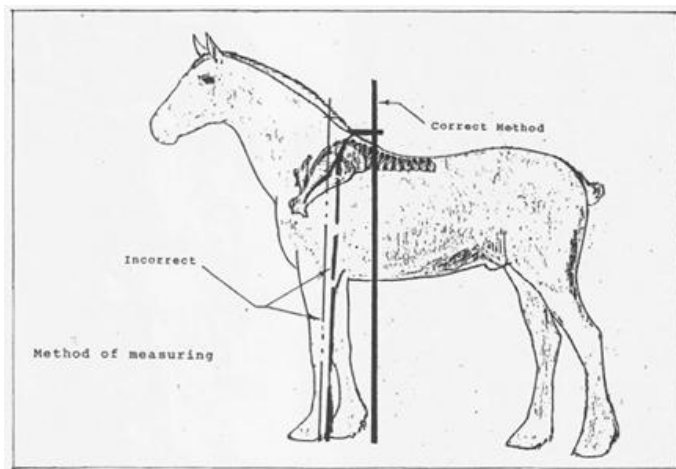
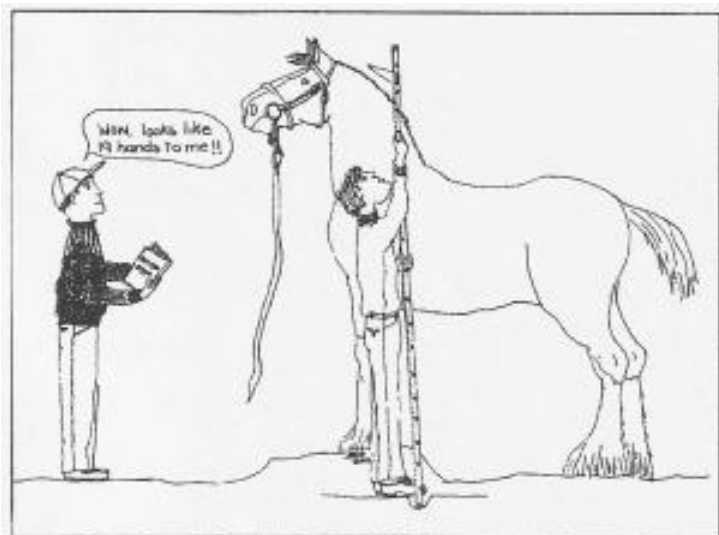
Another sales pitch we see often in referring to a young horse is: He is going to be big. How big is big? 15 hands would be big for a Welsh pony, 16 hands

would be big for a Quarter horse. Even by the Shire Standards 17 hands is not what would be consider big. Several years ago a lady advertized her 12 month old colt as 14-3 and said he was going to be big. I would bet my summers wages the horse would never made 17 hands. I seen an ad for a young horse not long ago that stated it would be big, and noted the mother was 16-3 and the father 17-2. I'll be the first to say you can't determine the future size of a young horse by the size of the parents. It simply doesn't work that way, but I think the owner was trying to promote that idea. Even if that were the case these figures don't indicate this horse will ever be BIG.

As I stated Shire breeders don't have a lock on stretching the truth. Many years ago a lady contacted me in hopes of importing a filly. Her main requirement was the fact this filly must grow to be 18 hands, as this was the size of two Belgian gelding which she owned. I told her how hard it would be to find such a filly and even if we did, the price would be real high. She still insisted so I told her that with the stakes so high we needed to be measuring the same way. I sent her an outline of how I measured to make sure we were both doing it the same. I got word back that she had never measured her geldings, but in fact she had just bought them at a sale, and was told one was 18-0 and the other 18-1. She them measured them herself and found one at 17-0, and the other 17-1. I got her a filly that matured to 17-2 which she was more than pleased with. The point of this story is the fact she was happy with 17-0 hand horses but believed they were 18.

One more point, I saw an ad not long ago that showed a person holding a shire horse. The ad stated the horse was 18 hands. If that were true the picture indicated the handler would be nearly 7 foot tall. May be the horse is 18 hands, but the picture surely doesn't indicate that to be the case. Be careful with your ads and pictures.

Lets look at the proper way to measure; the height of horses is measured in hands at the highest point of the wither. A hand is four inches. Nothing about this is hard to understand, and simple to do. Stand your horse square on all four legs, on a flat suffuse. Feel with your hand the exact highest point of the wither. Mark in your mind that point, or literally mark the spot with tape or a colored marker. Stand your measuring stick STRAIGHT up, and read the results, it is just that simple. If you're trying to promote the height of you horse, or even if it is important for you to know, get you a measuring stick, none of those stand back and guess ideas. Don't be fooled by following the center of the front leg up, or using a tape measure, or string, going from the ground following the body to the wither, this will make you off at least a full hands. Some may tell you to lower your horses head when measuring. I don't think that is necessary, but if your measuring to the proper point of the wither it will make little difference the placement of the horses head. (Picture below shows proper method to measure height)



BREEDERS LISTINGS:

-Looking for a Shire-
Contact one of our Breeders

Midnight Star Breeders

Brit and Sharon McLin

P.O. Box 957 Silt, CO 81652

(970) 876-5979

msbshire@sopris.net

Breeding Quality Shires Since 1978

Northeast Shires

Standing 3 Stallions

Embryo & Semen

collect and preserve

ShireHorse.com

603-930-6975

Gentle Giant Shires

Blake and Fran Amderson

R. R. 2; Didsbury, AB T0M 0W0 Canada

Phone: (403) 335-9609 Fax: (403) 335-8773

Email: shires@telus.net

Shires with size, substance & style.

Pigeon Fever

By Jessie Evans, DVM

Diseases - Mar 10th, 10

http://www.aaep.org/health_articles_view.php?id=358

Pigeon Fever is the common term for an infection caused by the bacterial organism *Corynebacterium pseudotuberculosis* (also referred to as Dryland Distemper). *C. pseudotuberculosis* bacteria tend to localize and form abscesses in the pectoral region and ventral abdomen of the horse. It is common misconception that the condition is related to pigeons. It was named because the abscesses cause swelling and give the horse's chest a "pigeon-breast" appearance. Ruminants-such as sheep, goats, and cattle-can also become infected with these bacteria, although cross-species transmission is rare and usually only occurs between horses and cattle because they can carry the same strain.

Pigeon fever cases used to be found primarily in California, although within the last several years veterinarians have diagnosed cases in many areas of the western United States. The organisms tend to live and multiply in dry soil and manure. Hot, dry weather is the most common environment where the organism is found, and most pigeon fever cases appear in late summer/early fall (the author first diagnosed a case in August, and her number of cases has increased exponentially since that time). Horses contract this disease through open wounds or fly bites, and sometimes through their mucous membranes. Some horses have developed lung abscesses after inhaling a concentration of bacterial organisms. A horse's immune system competence can dictate whether he contracts pigeon fever.

Clinical Signs

The first sign owners usually notice is swelling of the chest or abdomen. The horse might have a fever (temperature greater than 101.5 F), but he usually exhibits a normal attitude and appetite. An affected animal might be sore at the walk, usually after swelling and

abscess of his chest and abdomen have occurred. Some develop more severe infections where they acquire multiple abscesses and become systemically ill (inappetent, febrile, and lethargic). A small percentage of horses can develop internal abscesses, which are more serious. The infection can spread to the horse's legs, causing a syndrome called ulcerative lymphangitis, which can be difficult to treat.

A veterinarian can reach a definitive diagnosis through bacterial culture, although clinical signs can be quite diagnostic. If the horse is systemically ill, it is helpful to run blood work to be sure he doesn't have overwhelming systemic infection and to monitor internal organ function. If the horses develop internal abscesses, their disease is more serious and carries a guarded prognosis.

Treatment

Treating pigeon fever consists mainly of surgically opening the abscesses to allow drainage. The abscesses can be lanced as soon as they are mature. Applying warm compresses to abscesses can help bring them to a head. Your veterinarian can also ultrasound the abscesses and find the best place to drain them. The abscesses should be cleaned and flushed daily with dilute Betadine solution. The use of systemic antibiotics is controversial. Many clinicians believe that antibiotics will delay the maturation of developing abscesses and might facilitate internal abscessation. As long as the horse appears healthy and has a normal attitude and appetite, this author prefers to withhold antibiotic therapy. If the abscesses are deep and causing pain and discomfort to the horse, Banamine (flunixin meglumine) can be administered.

Prevention and Control

As in the case of all infectious disease outbreaks, our goal is to limit the number of horses affected. Affected horses should be isolated because drainage from their abscesses contains a high amount of bacteria that will contaminate the environment. Flies are a major vector and can spread the bacteria, so spray affected and unaffected horses (especially ones with open wounds) with fly repellent if it is still fly season. A good feed-through fly control product is a good option. People can carry the bacteria on their shoes, hands, etc., so be sure to maintain good hygiene after handling your sick horse. Bedding, water buckets, and any other materials that come in contact with pus should be disinfected/disposed of and not shared with other horses.



TROYER CARRIAGE COMPANY



~Parts~
~Accessories~
~Craftsmanship~

*Proud Sponsor of
ASHA Cart Raffle*

Handcrafted in the USA

www.troyercarriage.com



TROYER CARRIAGE COMPANY, INC.

280-A North Village Dr., Shipshewana, In 46565

(260) 768-7135 Fax: (260) 768-7137

The American Shire Horse Association est. 1955



Myrna Rhinehart Secretary

P.O. Box 408 ~ Lake Delton, WI 53940

Phone: 888-302-6643

email: secretary@shirehorse.org

www.shirehorse.org