

The American Shire Horse Association

est. 1885



SPRING 2011 BULLETIN

A Message From Your President:

Dear Fellow ASHA Members:

I am pleased to report that we had a productive and successful annual members meeting and board meeting this past February. We were very fortunate that Sandy Lerner was so gracious in offering the use of her home and facilities to conduct the meeting. It is very gratifying to have such open and generous support from our members.

As you know, we welcomed a number of new board members and we are excited with the positive energy and direction that they bring. We look forward to working together to further our mission.

Kim Murchison and Leanne Hoagland have graciously agreed to take over the editing and responsibility for the publishing of our quarterly newsletter. Please give them your thanks and a vote of confidence in going forward with this important but time consuming task.

In addition, I am very pleased to report that the Shire Horse Educational Foundation received a very generous donation of \$2,000 from one of our members which was used as a challenge grant and raised an additional \$2,000 at the meeting. We are actively exploring with the foundation the protocols for grant writing so we can receive the benefit of those funds this year. I know that this will be a substantial benefit to the organization and will help give us even more flexibility in our budgeting process for the educational and promotional aspects of ASHA.

By the time you read this I will likely still be looking at snow banks whereas many of you will be watching your foals run about the pasture. That is always my favorite of the year with my horses and I suspect the same for you. Best of luck to all of you whether you are foaling this year, showing, parading or just enjoying your wonderful Shire horses. Please continue to provide constructive feedback to the board and officers so that we may continue to grow this organization.

Dan Hubbell

President, American Shire Horse Association
dan@hubbelllawoffice.com



Board of Directors

Dan Hubbell ~ President

400 8th St., Traverse City, MI 49686
(231) 947-5600 dan@hubbelllawoffice.com

Karla Stoner ~ Vice President

8401 Peters Rd., Fredreck, MD 21704
(301)874-3250 bloomforge@peoplepc.com

Kim Parrington- Murchison ~ Treasurer

0185 CR 225, Rifle, CO 81650
(970) 625-1142 thshire@sopris.net

Leanne Hoagland

PO Box 95, Glendive, MT 59330
(406) 687-3004 bsshires@midrivers.com

Danelle Kinney

21847 310th St., Red Wing, MN 55066
(651)380-9600 haugenhill@hotmail.com

Janet Long

34 Howards Lane, Epsom, NH 03234
(603) 930-6975 janet@northeastshires.com

Gene McCaffrey

267 Sholtes Rd., Schoharie, NH 12157
(518) 872-1295 oxkill@capital.net

Todd Riedel

6168 Greenwich Rd., Seville, OH 44273
(330) 419-0346 traillightfarms@aol.com

Paul Tyrell

PO Box 320, Upperville, VA 20185
fourinhand@gmail.com

Secretary

Pamella Corell

1211 Hill Harrell Rd, Effingham, SC 29541
(843) 629-0072 secretary@shirehorse.org

The Editor's Note:

Hello Members:

We hope you enjoy the new look and feel that we have given your Bulletin. It is a joint venture that we hope to continue to grow and improve upon!

You will notice a new section called "Meet the Membership". Here, we would like to introduce a few of our members to the rest of the membership each quarter. We will be sending out the questionnaire, and encourage you to send it back with a picture that you would like to share.

Additionally, we will bring few articles to you each quarter. If you have an article or topic let us know. We will take all we get and put it in where it will fit. We may need to edit some items.

Each quarter, we would also like to share what our members are doing with their Shires. If you participate in any activity from an ASHA Show, to the SAC Program or even a farm day or parade— or just family fun please send a photo and short description to share.

Thank you for supporting the Shire horse. Feel free to contact either one of us with ideas for the Bulletin. We would love to hear them and bring the material to the rest of the membership!

Happy New Year and we hope you have a great Shire Year!

Leanne

(406) 687-3004

bsshires@middrivers.com



Kim

(970) 625-1142

thshire@sopris.net

ASHA Rate Schedule

<u>Service</u>	<u>Member</u>	<u>Nonmember</u>
Filly/ Colt up to 6/1 of yr. after birth *	\$100	\$200
Filly/Colt after 6/1 of yr after birth*	\$200	\$200
Geldings Any Age*	\$100	\$200
Shire Sport Horses*	\$125	\$225
Blood typing/ DNA	\$60	\$120
Conversion of Blood type to DNA	\$50	\$100
DNA Filing Fee for CSHA/ SHS Horses	\$25	\$50
Transfer	\$40	\$140
Bulk Registration/ Transfer = 3 transactions or more from same owner All paperwork must be in order.	10% Discount Starts June 2011	

* Includes DNA Kit for horse being registered.

ASHA Membership Rates:

<u>Membership</u>	<u>US Address</u>	<u>Foreign Address</u>
Annual*	\$50	\$60
Two Year*	\$90	\$100
Life Membership*	\$600	\$700
Life—Annual installments for five years.*	\$130	\$150
5 yr Corporate Membership— One Vote*	\$275	
Charge for Returned Check	\$35	\$35
Friend of the Shire (Non Voting)*	\$25	\$25
Youth Membership (Non Voting)*	\$25	

**Thank You for Supporting the Shire Horse
Every Member Counts!**

* Bulletin Mailed Quarterly with this membership

Need More Information or Assistance? Contact The Secretary

Pamela Correll, Secretary

American Shire Horse Association

1211 Hill Harrell Road

Effingham, SC 29541

Phone: (843) 629-0072

email: secretary@shirehorse.org

website: www.shirehorse.org



Quarterly Financial Reports

As your editors we have put the most current information into this bulletin. At the time of printing we did not have the current P&L. Below is the current Balance Sheet as prepared by our Secretary and reviewed by Terri A. Brown MBA of TAP Financial Services, LLC . The P&L as well as the 2010 forth quarter corrected financial statements will be sent with the Annual Meeting Minutes. Sorry for any inconvenience.

Balance Sheet
—Spring 2011—
As of March 31, 2011

ASSETS	Total
Current Assets	
Bank Accounts	
ASHA BB&T	6,958.66
BB&T Life Member CD 7775	0.00
BB&T Life Member Savings	1,120.00
First Reliance Business Money Market 1700025392	8,039.56
First Reliance Life Member CD	8,292.25
Lawsuit Resolution Fund	0.00
Total Bank Accounts	\$24,410.47
Accounts Receivable	
Accounts Receivable	42.30
Total Accounts Receivable	\$42.30
Other Current Assets	
Inventory	3,088.25
Undeposited Funds	0.00
Total Other Current Assets	\$3,088.25
Fixed Assets	
Furniture & Equipment	0.00
Total Fixed Assets	\$0.00
TOTAL ASSETS	<u>\$27,539.04</u>
LIABILITIES AND EQUITY	
Liabilities	
Current Liabilities	
Other Current Liabilities	
Current Portion- Judgment	0.00
Legal Fees Payable	0.00
Payable to Shire Horse Association	0.00
Payroll Taxes Payable	459.00
Sales Tax Payable	0.00
Total Other Current Liabilities	\$459.00
Total Current Liabilities	<u>\$459.00</u>
Long Term Liabilities	
Judgment Payable— Waring	0.00
Less Current Portion	0.00
Total Long Term Liabilities	0.00
Total Liabilities	<u>\$459.00</u>
Equity	
Opening Balance Equity	1,200.00
Retained Earnings	26,753.71
Net Income	-793.67
Total Equity	<u>\$27,080.04</u>
TOTAL LIABILITIES AND EQUITY	<u>\$27,533.04</u>

* * * * *

We Want to Hear from You-

THE MEMBERSHIP:

In the 2011 Bulletin we have a new section called "Meet the Membership". In order to make this section the best it can be, we need your input as a member. There are two parts to this section of the bulletin. Details for each section are listed below. The third and final way you can take part in the Bulletin is by advertising with us:

Individual Member Highlight

We will highlight a few members in each bulletin. Below are several questions we would like to have you answer and return to us with a picture to print with your answers to the questions.

Questions to answer: (About 300 Words)

- 1) Name and business name if any
City and State
Email address/ Phone if you want
Family
Prefix
- 2) What is your background in horses and how did you get into Shires
- 3) Shires Owned:
- 4) What do you do with your horses?
- 5) What are your future goals with your horses?
- 6) What would you like to see in the future for / from ASHA?

Member News

Send us pictures or small write ups (paragraph to a few sentences) of what you are doing or is interesting with you and your Shire horses.

- Promotional
- Just for fun
- Shows
- Pulls
- Trade shows
- Awards and honors

Contact YOUR Editors for More Info!!

Leanne Hoagland

(406) 687-3004
bsshires@midrivers.com

Kim Mutchison

(970) 625-1142
thshire@sopris.net

** These sections will vary in size due to submissions and space available.



Advertising Rates: Support the Shire and Advertise at the Same Time!

We invite you to advertise with us each quarter. There will be two ad sizes available with the option of a text ad in the Breeder's Directory or in the classified section. We will require that all ads be sent in Jpeg or picture format and be camera ready. If you need design help contact one of the editors and we will get you in touch with someone who can help you. At this time all ads are black and white.

***** Your best deal is the Four Issues. You pay for three and get one free!**

****At this time we are not taking cover ads- if the Bulletin expands to that point we will put the inside of both the back and front covers up for purchase.**

*** Classified Ads must be submitted in writing and renewed each issue.**

Contact: Leanne Hoagland bsshires@midrivers.com
406-687-3004 (H)/ 406-939-1263(C)

<u>Ad</u>	<u>One Issue</u>	<u>Four Issues</u>
5 X 7 Inch Landscape	\$100	\$300
3 3/4 X 5 Inch Portrait	\$75	\$200
Breeder's Directory Text Only <i>30 Characters per line including spaces. Six Lines of text total</i>	\$35	\$110
Text Only Classified Ad <i>30 Characters per line including spaces. Six Lines of text total</i>	\$10.00 Per Ad Per Issue	N/A

Solid Lined Box : 1/2 Page Landscape 5X 7 Inches

Dashed Line Box : 1/4 Page 3 3/4 X 5 Inches

Dates For Submission:

<u>Newsletter</u>	<u>Mail Date</u>	<u>Ad Copy Due</u>
Winter	January 15	December 1
Spring	April 15	March 1
Summer	July 15	June 1
Fall	October 15	September 1

We will be taking Ads:
Starting with the Summer Newsletter!



Are you taking your Shires to a Horse Expo or event to “promote” the breed?

ASHA offers \$150 stipends to the first 15 members that apply (and qualify) for them.

Please Contact **Karla Stoner**

(301)874-3250 or Email: bloomforge@peoplepc.com

VACCINE STORAGE AND HANDLING



Proper storage and handling of vaccines is critical to their efficacy and safety.

Per manufacturers' instructions, aseptic technique is to be followed when handling and administering vaccines. Vaccine administration sites (skin / haircoat, mucosa) are to be clean. Each animal should be vaccinated with separate new needles for each vaccine product to avoid cross contamination of products and possible adverse reactions.

Care must be taken to assure that vaccines are administered via the intended route, i.e. that intranasal vaccines should NEVER be given via the intramuscular route.

Storage and handling instructions may be product specific. It is important to read and follow the manufacturer's recommendations for each product regarding: storage temperature, exposure to light during storage, and shaking of the product to assure uniform vaccine suspension.

Maintaining vaccines at the appropriate temperature from arrival from manufacturer to patient administration is a very important aspect of proper immunization delivery programs. Lack of adherence of proper temperature maintenance can result in lack of efficacy, undue vaccine failures, and an increased rate of adverse reactions post vaccination.

The following recommendations can help improve vaccine management practices:

- Have a designated individual responsible for handling and storage of vaccines.
- Maintain a vaccine inventory log, documenting: Vaccine name, manufacturer, lot number and expiration date, date and number of doses received; and arrival condition of vaccine.
- Store vaccines in a refrigerator with a separate freezer compartment.
- Keep a working thermometer in the refrigerator; monitor the temperature twice daily. Maintenance of a log is advisable, particularly if multiple people share responsibility for temperature monitoring.
- Store vaccines in the middle of the refrigerator, **NOT** in the door or against the back of the refrigerator.
- Organize vaccines according to expiration date, avoiding wastage by ensuring that products with earlier expiration dates are used before products with later dates.
- In the event of refrigerator failure, promptly remove vaccines to an adequately refrigerated container.
- In the event of a power failure, keep the refrigerator door closed until power is restored or a suitable location for the vaccine has been identified. Refrigeration can be maintained in a kitchen-sized refrigerator (20-24 ft³) for 6-9 hours if the doors remain closed. Once power is restored, promptly check refrigerator temperature to determine if vaccines have been exposed to temperatures outside of the recommended range. If power outage is expected to be longer than 6 to 9 hours, remove vaccines to a container that is maintained with ice. Monitor temperature in this container.
- Ambulatory vehicles should have a thermometer in the refrigeration unit or portable cooler in which vaccines are carried. Temperature should be checked each time the container is opened. (*Note: A freezer pack placed in a cooler is not sufficient to maintain vaccines in the proper temperature range throughout the course of a work day.*)
- Consult the manufacturer if vaccine:
 - Is exposed to temperatures outside of the recommended range
 - Undergoes color change during storage
 - Is exposed to ultraviolet radiation



FEATHER 101

By: Don Langille of Bigshoe Stables in OK

The feather of a Shire is one of the main facets of the breed that draws people towards them. When they are white and flowing, they are truly impressive. To get that result takes a lot of dedicated work. There are many old wives' tales of methods and potions that in fact do work to produce long quality feather, and no one can say which is best. You have to find what works best for you and your environment. What I am going to give you works best for me.

The first area to look at is the general health of the horse. A healthy horse produces more and better feather. This starts with a good worming program as well as a good vitamin and mineral supplement. Supplements higher in Biotin help in feather production and quality. Some rations that are high in protein tend to be harder on feather.

The main technique used by the vast majority of Shire people to help the feather is through the use of oil and sulfur. This procedure keeps the feather soft and supple allowing growth and protection. Depending on the circumstances, once a week is usually plenty. Dry areas and frequent washing tend to need it more often. The oil used needs to be white food-grade oil such as mineral oil. Depending on the amount, it can be purchased at feed stores or commercial lubrication dealers. The sulfur can be obtained from most feed stores or garden centers. The usual mixture is about 2 to 3 pounds of sulfur to 2 to 3 gallons of oil in a bucket. The oil is placed on the feather by using a glass or the hand and rubbed through the feather. In areas where scratches are present, more sulfur is rubbed in. Allowing the oil to run over the hoof helps it as well. The oil and sulfur acts as a conditioner to the hair, the same as most people do to their own hair. On occasion, it is good to wash the legs before oiling. This gets rid of the dirt and allows the oil to penetrate better. The oil attracts dust and dirt which makes the legs look dirty for a while, but it is doing its job. You also have to watch in case a horse is allergic to the sulfur or oil. It is rare but does happen. Then, you have to switch to a clear vegetable oil.



Many people use soft leather coverings for the hoof head area called spats. These are fastened around the ankle and protect the feather over the hoof. It is important to keep these oiled as well. Also, pastures and turn out lots need to be free of weeds with hard stems. The same is also true for stubble fields of grain or corn. These will break the feather off easily and will wear the feather off. The stall where the horse is kept needs to be reasonably clean and not too wet to provide a good surrounding for feather maintenance. Too dry is as bad as too wet. Some moisture will help in foot maintenance as well.

Care must be taken when washing and drying the feather, whether for shows or just at home. A gentle shampoo that gives plenty of suds and is low in grit is preferred. Using warm water also increases the soap effectiveness. Avoid using a blow dryer on the feather as this will dry it out quickly and make it brittle and break off. When using sawdust to dry, be sure it is a fine light colored variety. Always use gentle

downward motions and never rub up and down, or the feather you are so proud of will be gone. When combing and brushing out the feather, use a soft brush or a wide-toothed comb to be gentle on the feather.

There are many ways to create better feather; the best ways are what works for you. Just remember, it takes a long time to grow it, and it can be gone overnight.

Recipe to cut out is later in the bulletin!



Feather Oiling Recipe: as used by Kim Murchison and Leanne Hoagland

Editors Note: All products used on your horse should be done with the direction and help of a licensed veterinarian. Horses, like people, can have allergic reactions to ingredients and chemicals that they come in contact with. When using new ingredients or chemicals on your horse, do so with awareness of possible reactions.

Ingredients:

- ~Mineral Oil
- ~Dusting Sulfur or Floured Sulfur– As used in dusting roses and fruit trees

**Mix the two ingredients above until you have the consistency of Elmer's Glue or a milkshake. Add oil first to container and stir in sulfur until you reach the consistency desired.

Other Ingredients to Add:

- ~ Lavender Essential Oil– Great for Skin Health and Healing.
- ~ Tea Tree Essential Oil– Anti fungal and Bacterial properties
- ~ Duramycin-10; Powder Packet of Tetracycline Hydrochloride

- 1) Do not wash feather any more than you need to in order to show.
- 2) Oil your feathers once a week as needed with the mixture listed above- always pull the mixture down the leg through the feather starting at the knee or hock and working to the hoof head- Never pull the hair up. Get as much of the mixture to the skin as possible.
- 3) When done your legs and feather will be yellow and oily- when you wash them for show they will be nice and white.

Spring Is Here: Are Your Vaccinations on Track?

<u>Disease/ Vaccine</u>	<u>Performance Horses</u>	<u>Pleasure Horses</u>	<u>Broodmares</u>	<u>Comments</u> ** Always work with your Vet!
West Nile Virus	Annual; Booster: prior to expected risk; vaccinate semi-annually depending on risk.	Annual; Booster: prior to expected risk; vaccinate semi-annually depending on risk.	Annual; Booster: 4-6 weeks before foaling	
Tetanus Toxoid	Annual;	Annual;	Annual; Booster: 4-6 weeks before foaling	Booster at time of injury or surgery if last dose is not in last 6 months.
Encephalomyelitis EEE, WEE, VEE	Annual in Spring	Annual in Spring	Annual in Spring Booster 4-6 weeks before foaling	In epidemic areas booster every 6 months; VEE only in areas with threat of exposure
Influenza-Injection	Every 3 to 4 months	Annual; Booster: before likely exposure	Semi annual; Booster: 4-6 weeks before foaling	
Rhinopneumonitis (Rhino) EVH-1 & EVH-4	Every 3 to 4 months up to annually	Semi- annual	5 th , 7 th , 9 th month of gestation - 3 rd month is optional. (Inactivated EVH-1)	Breeding stallions should be vaccinated before breeding then semi-annually. Mares should be vaccinated 4-6 weeks prior to breeding.
Rabies	Annual	Annual	Annual	

***The recommendations above are based on horses with a vaccination history. (For all the vaccines discussed in this table.)

***Remember horses with no history need a 2 shot series with a booster 3-4 weeks after first injection.

*** Consult your Veterinarian for more information and Vaccination Protocol!!

ASHA Announcements

At our 2011 BOD meeting, the BOD approved having our secretary immediately send out postcards acknowledging receipt of new memberships, renewals, membership information and transfers to increase our efforts at positive communication with our members. Please be looking for these postcards in the mail as a receipt of your correspondence with the ASHA office.

If you do not receive a postcard in a timely manner, please contact:
Todd Reidel at (330) 419-0346 or Email: traillightfarms@aol.com



Do you know of an older Shire that could be registered with ASHA?

- Normally, there are extra fees associated with registering Shires older than a year with ASHA, but.....

- ASHA is working on details for hosting a temporary “Amnesty Program”. Details and time frame will follow in the Summer Bulletin.
- Right now, we want to know if you have horses that fit the criteria and if you would like to register them at the one time reduced fee of \$100.
- Horses must be 2 years old or older and all paperwork (including any transfers) must be in order for a smooth registration. Any transfer fees will be extra with the Amnesty Registration fee of \$100.

Please Contact:

Kim Parrington– Murchison ~ Treasurer
0185 CR 225, Rifle, CO 81650
(970) 625-1142 thshire@sopris.net

Stallion Reports: Help the Breed by Sharing Your Data

ASHA and the Statistics Committee would like to encourage every stallion owner who is breeding to participate in the stallion report process for the 2011 breeding season, by reporting what mares your stallion covered in 2011 for the 2012 foal crop. There are no costs related to this at this time. The form that was presented to the BOD for review is later in this bulletin. You may use this form for your reporting or download the PDF version of the form, that will soon be uploaded to the ASHA web site. It will be located under the tab for Forms.

Stallion reports are useful in many ways for the breed, members and the association. The first and most important of those is that of budget and finances. Stallion reports would allow ASHA to have a base line to plan registrations and income for the coming year. Furthermore, we would be able to have data on our Shires. We would be able to see what horses are producing, what mares are being bred and producing live offspring. Also with the place to mark breeding method we will have a better idea of how our genetics are being spread around. It will shed light on how much shipped and frozen semen we are using, live cover, on farm AI, etc. The Statistics Committee will use a lot of this data from this form along with registration numbers to compile data on the breed. Confidentiality will be maintained as before when analyzing the data.

Also included is a column for release of breeding- if this column is initialed by the stallion owner it would allow the owner of the resulting foal to register it without the stallion owner signature on the application. Several of the breeds do this- it is an easy way for the stallion owner and mare owner to be able to register the foal without further signatures after the transaction. Contact Leanne Hoagland for questions at bsshires@mdrivers.com or call (406) 687-3004.

NEW REGISTRATION DISCOUNT RATE

Starting June 1, 2011

The Bulk Registration/ Transfer

10% Discount on 3 or more Transactions

* Submitted at one time from same owner, with all paper work in order.



Stallion Breeding Report

American Shire Horse Association

Pamela Correll - Secretary
1211 Hill Harrell Road
Effingham, SC 29541
Secretary@ShireHorse.org
(843)629-0072

For Office Use only:
Date Recd: _____
Date Etered: _____
Stallion Breeding Reports must be postmarked by November 30 th of the breeding year. Postal meters are not accepted.

Name of Stallion: _____

Registration Number: _____

Registered Owner: _____ ASHA Membership Number: _____

Address: _____

City: _____ State: _____ Zip: _____

Daytime Phone: _____ Email: _____

I do certify that the mares listed below were exposed to this stallion during the calendar year: _____ Date: _____

Recorded Owner/ Authorized Agent Signature: **X** _____

Registered Name of Mare Bred	Registration Number	Recorded Owner	Breeding Method **	Date of first Exposure *****	Date of last Exposure	Release of Breeding *****

Use the following to specify breeding method:
Use all that apply

- P= Pasture
- H= Hand
- A= Artificial Insemination
- S= Transported Semen
- F= Frozen Semen
- E= Embryo Transfer

***Release of Breeding:
Your initials will authorize ASHA to register the resulting foal without your signature on the Breeder's Certificate.

****When using Frozen or Cooled Transported Semen please list the dates the mare was inseminated not the date the semen was shipped.

What Do I Do With This Foal?

Desensitizing the Foal

By: Kim Murchison, Owner Tally Ho Shires

Spring is the best season of the year on our farm as it marks the beginning of foaling season. Each year as the foals begin to arrive, I begin the ritual of training that I started perfecting over 25 years ago. I'm a firm believer that foals should be handled well and often, in order to insure that the adult horse they grow into will be a pleasure to own. The following is a training schedule that I begin shortly after the birth of the foal.

During the first week of the foal's life, I spend about 20 minutes in the morning and 20 minutes in the evening each day rubbing the foal all over and getting him/her used to being handled. If your foal is reluctant to be touched, start by grooming your mare and allow the foal to come up and smell/touch you as you are grooming mom. It is even more helpful to do this in a small area (stall or small pen), as the foal can't get too far away from you. The foal is extremely curious and will come up to see what is going on. With my foals that are born early enough in the year to need to be stabled at night, I handle them as I'm moving them in/out of their stall for the day and night. Make sure that you run your hands down all of the foal's legs, under its belly and between its legs to de-sensitize the foal. This is also when I start to pick up each of the foal's feet for short periods of time. If you handle your foal on a regular basis, they will be much easier to handle as they grow.

As soon as the foal is comfortable with being touched all over, I begin placing a halter on the foal (make sure it's a "break-away" halter in case they catch it on something) and allowing the foal to get used to the halter and dragging a lead rope while I'm grooming him/her. I don't begin to put resistance on the halter yet, just allow them to wear it and drag the lead rope around while I'm rubbing them down. Usually by the end of the second week, the foal will easily accept you placing the halter on them and not be bothered by it or the lead rope. If the foal does not easily accept you placing the halter on it and letting the rope drag, continue doing that until they are comfortable with it.

Usually by 2-3 weeks old, I begin training to tie. I have two railroad ties (about 8 feet tall) with rings (at about 5 feet from the ground) on them about 10 feet apart in an open area. Through the ring, are a tire inner tube and then a rope tied to the inner tube. I bring the mare over to the tie post and tie her to one of them. I then move the foal close enough to the other post with the inner-tube tie on it and hook the foal up to it (only leave about 1 foot between the inner-tube and the foal's head). The inner tube allows the foal to pull back and has some "give" so that your foal won't injure itself. Allow the foal to "soak" on the tie post for about 15 minutes. They usually pull back and rear forward a couple of times before they settle in to stand at the post. I don't do any grooming at this time, just allow the foal to "soak" and get used to being tied up. I do this daily for about a week and then begin to groom the foal while it is tied up for 15-20 minutes. Some farms will tie their foals in tie-stalls next to the mare to feed them beginning at about 2-3 weeks old, this works well also.

Once the foal is comfortable being tied up and groomed for short periods, I begin training the foal to lead. For the first lesson, I take the foal into the arena with a halter and lead rope on (I usually tie the mare along the outside of the arena). I begin the training session with the foal by teaching the foal to back away from me if I step into them. If you keep the foal's head looking at you (if the foal turns away, gently pull their head back to you) and asking the foal to move around and away from you, he/she will learn to keep an eye on you and watch for instruction. Usually the natural reaction of the foal is to back away from you. If that happens, walk into the foal until they will stop, face you and stand quietly. Make sure and work on both sides of the foal, asking the foal to move away from you by pressure on his/her shoulder or flank with the head always cocked toward you. Never allow a foal to "run past" you as that almost always results in you taking a kick. Don't ask the foal to "walk" with you until they will respond very well when you ask them to move away from you on either side. This approach is commonly called "round penning" in the light horse world. I've found that actual round penning a young Shire can be very damaging to young joints, so I've modified my training to encompass the same techniques without stressing the joints.

Once you feel comfortable asking the foal to move around and away from you, ask the foal to lead forward. If the foal doesn't respond to the forward pressure, step to the side and ask the foal to move sideways again, and then repeat the forward pressure. Usually within a couple of pulls, the foal is leading quietly next to you. If the foal tries to run past you, pull the foals head toward you and ask the foal to move sideways again until you have the foal's attention.

If your mare is broke to drive, you can now harness up mom and halter the foal and tie to mom's collar (tie foal about 8 inches from mom's collar ring). I always have someone else handy to encourage the foal to step up when I ask mom to move out. Tying your foal next to the mare while she is working is a fantastic way for your foal to get used to the noises, equipment and voice commands associated with driving. We do this with all of our foals and they are virtually "bomb-proof" after a summer of parades and farm work. These are some of the other helpful hints that I use when training my foals:

Feed the mares/foals on a large tarp, this desensitizes the foals to plastic.

I begin trailer training the foals at a few weeks of age as well. I lead mom into the trailer and put the foal on a long lead-rope so that I can stand in the trailer with mom and "encourage" the foal with gentle tugs. Baby will generally jump into the trailer with mom with only a little bit of encouragement and some time. I try to practice trailer loading 1-2 times a week after that.

I hose down my mares daily in the summer time and the foals get used to the water as well. I don't "tie" them at this time, just spray them down and allow them to walk away and come back. The mares stand really well and love this and the foals quickly learn to enjoy this as well.

Take your foals with you when you take your mares out, our foals go to parades, farming days, wagon drives and events throughout the summer.

After the first few weeks of more intense work, our foals and mares go out to pasture. I make a point to go out into the pasture everyday and handle each foal to make sure that they remember the work that I started. Our foals especially love belly and butt scratches and will find you in the pasture to get them.

Keep training sessions with your foal short (15-20 minutes) and always end on a positive note.

Frequency is more important than total time spent.

Statement of Position on Animal Care*

The American Shire Horse Association encourages Shire owners to:

- Provide a high standard of livestock health;
- Manage livestock in a humane manner;
- Use and maintain transportation and handling facilities that provide livestock health and safety;
- Provide feed and water to maintain livestock health and productivity;
- Consult with a licensed veterinarian concerning animal health care practices;
- Use approved livestock health products according to label directions;
- Sustain and conserve natural resources by proper management of land, air, water and wildlife;
- Support and maintain rural and family traditions important to our society.

*Resource: National Pedigreed Livestock Council (text provided by member Sharon McLin)

MEET THE MEMBERSHIP

Richard and Venesa Cameron; RockinRunawayFarms Cameron Shires; Ellensburg, Wa 509-312-9342/ rockinrunawayfarms@hotmail.com

My Grandfather had draft horses for many years. I grew up around all breeds of drafts. We use them for just about everything, from plowing and disking to wagon rides and pulling competitions. My wife and I bought our first registered Shires back in '07. In part, because of the stories of my grandfather's team of Shires that he used for pulling. They were out of the Anderson Family Shires. As the story goes, they liked to run at least once a year, and were always trying to out-do the other. They were my grandfather's favorite team. We own 7 Reg. Shires with one on the way.

We use our horses for many things. Plowing bees, wagon rides, riding, parades, pulling stagecoaches through the grand entry of the Ellensburg Rodeo, and a bit of local showing. But most of all, we enjoy our horses as much as we can, doing whatever we can.

Our Future goal is to raise a few more shires to increase our hitch to 6 and maybe even 8. We would like to breed and raise horses that stand around 18hh and 2000lbs plus.

What would you like to see in the future for / from ASHA? I would like to see in the future that the quality/standards of the Shire be put first over anything or anyone's agenda. I would also like to see that what's in the past stay in the past, and everyone moving forward with the Shire.



Thank You to All Who Attended
2011 Annual Meeting and Education Day

Your input was appreciated and needed!

Draft Minutes with Attachments Are Done
Hardcopies will be mailed April, 2011

Currently Available Online:

ASHA website

www.shirehorse.org

Members Only Meeting Minutes
2011 Annual Members' and Board Meetings

Committee lists will be printed in the Summer Bulletin



2011 Show Schedule:

Note: Qualifying shows for *the Shire All North American Contest* are coded as follows:

(AA) 1st – 4th qualifies; **(A)** 1st – 3rd qualifies; **(B)** 1st or 2nd qualifies; **(C)** 1st qualifies

The 2011 NATIONAL SHIRE SHOW (AA) will be held at the **International Draft Horse, Mule and Pleasure Driving Show**, Pomona County Fair Grounds, Pomona, CA, Sept. 28 - Oct. 2. (<http://www.lacountyfair.com/2007/Competitions/index.asp>) Halter classes Sun., Oct. 2nd. Premium books out June 1st. Coordinator: Jessica Graves, phone: 951-733-9850, email: shiresnapps4me@yahoo.com

Colorado Draft Horse Classic, Garfield County Fair Grounds, Rifle, CO, **(B)**, **(Regional)**. July 2nd. Website: www.codraffhorseclassic.com. Halter and hitch classes. Coordinator: Kim Murchison, Phone: 970-625-1142. Email: thshire@sopris.net

Saratoga County Fair, Balston Spa, NY, **(C)** – (Local show) – July 21 - 22. Contact Tom Armer: 518-885-5696 or email: tarmer@nyscap.rr.com

Scott County Fair, Jordan, MN, **(B)** – **(Regional)** – replaces MN Sate Fair Show) July 27 – 31, (www.scottcountyfair.com) For premium books - contact the Scott County Fair Office: 952-492-2436. Show coordinator: Danelle Kinney: Phone: 651-380-9600, Email: haugenhill@hotmail.com.

Ohio State Fair, Fairgrounds, Columbus, OH, **(B)** **(Regional)**, Draft horse show August 4-5. (<http://www.ohiostatefair.com/osf/osf3.htm#OpenHorse>), Halter and hitch classes. Halter judge: TBA, Hitch judge: Mark Sparrow Pleasure driving and reinsmanship classes planned for this year. Premium lists available late April or early May. Coordinator: Todd Riedel, phone: 330-419-0346, email: TrailLightFarms@yahoo.com

Addison County Fair, Middlebury, VT, **(B)** **(Regional)** – August 12-13. Halter and hitch classes. Premium books: Kathy Kennett 1716 VT Route 22A, Panton, VT 05491 or email: kkennett@together.net Coordinator: Turie Sorrell, phone: 802-695-2980, email: tsorrell@kingcon.com

Montana State Fair, Billings, MT, **(C)** **(New Regional this year)** August 18-20, 2011. Halter and hitch classes. Website: www.montanastatefair.com Coordinator: Leanne Hoagland, phone: 406-687-3004, email: bsshires@midrivers.com

Skowhegan Draft Horse Show, Skowhegan, ME, **(B)** **(Regional)** (<http://www.skowheganstatefair.com>), Friday, August 19th. Halter classes - 9:00 AM. - Hitch classes 5:00 PM. Judge: TBA. Co-coordinators: Vicki Schmidt, troika@megalink.net and Jenny Cournoyer, squantum_shires@yahoo.com

New York State Fair, Syracuse, NY, **(B)** **(Regional)**, Aug. 30 – Sept. 5. (<http://www.nysfair.org>). Stallion & mare halter classes are on 8/30, geldings 9/1 AM. Premium books – contact coordinator: Vicky McCaffrey, 518-872-1295 or email: oxkill@capital.net

Central Wisconsin State Fair, Marshfield, WI, **(B)** – **(Regional)** September 2 - 5, website: <http://www.centralwisconsinstatefair.com>. Halter and hitch classes. Premium book - contact fair office at 715-387-1261 or email cwsf@tznnet.com. Coordinator: Danelle Kinney, 651-380-9600, email: haugenhill@hotmail.com

Oklahoma State Fair, Oklahoma City, OK, **(B)** - **(Regional)** – Sept. 15 – 17. (http://okstatefair.com/horse_premium.asp) Coordinator: TBA

Keystone International Livestock Exposition, Harrisburg, PA, **(A)**, **(Regional)**, October 6 - 8, 2011. Halter show Fri, Oct. 7th. Website: (<http://www.agriculture.state.pa.us/kile/site/default.asp>), Halter and hitch judges: TBA. Coordinator: Karla Stoner, 301-874-3250, email: bloomforge@peoplepc.com

Georgia National Fair, Perry GA, **(C)** – (Local show) – Oct. 14 – 15. website: www.georgianationalfair.com Coordinator: Carla Beckom, email: twindrms@bellsouth.net Premium book information: TBA

For additional information on ASHA shows, visit www.shirehorse.org and click on 'Shows' and then 'Upcoming Shows' on the menu, or contact the show coordinator

Additional All North American qualifying shows appear on the next page.

Other Qualifying shows of the 2011 Shire All North American contest:

U.S.A.:

MN State Fair, St. Paul, MN **(C)**, Aug. 25 – Sept. 5, website: www.mnstatefair.org

Nebraska State Fair, Lincoln, NE, **(C)**, Aug. 26 – Sept. 5, website: www.statefair.org

Champlain Valley Fair, Addison, VT **(C)**, Aug. 28 – Sept. 6, info: 802/878-5545, www.cvexpo.org

Fryeberg Fair, Fryeburg, ME **(C)**, Oct. 2 – 9. website: www.fryeburgfair.com

Canadian:

CSHA National Show, Calgary, Alberta, Canada Calgary Stampede **(AA)**, Draft horse show July 7-11, website: <http://ag.calgarystampede.com>

Central Alberta Draft Horse Classic, Olds, Alberta **(B)**, Draft horse show July 2 – 4. website: www.albertadrafthorseclassic.com

Vermillion Fair, Vermillion, Alberta **(C)**, July 28 – 30. Website: www.vermilionfair.ca/

Carp Fair, Carp Ontario **(C)**, September 22 – 25. Website: <http://carpfair.ca/>

***** All performance classes Eligible for SAC Points at all ASHA Regional/ National Shows.**
Horses Must be nominated to SAC.

ASHA Mission and Purpose Statements

Mission Statement

The Mission Statement of the American Shire Horse Association is to maintain the integrity of an accurate registry and promote the Shire breed through excellence.

(Developed at the 2002 Annual meetings)

Purposes: (summarized from the ASHA by laws and articles of incorporation)

- To form, conduct and operate a non-profit organization composed in whole or in part of persons, firms and/or corporations having interest in the breeding and improvement of Shire horses;
- To foster and preserve the traditions pertaining to the Shire horse;
- To encourage original investigations in determination and development of the best types of horses and the breeding to only purebred sires;
- To assist in procuring and making available for breeding suitable stallions and mares;
- To collect, revise, preserve and publish the history and pedigrees of purebred horses, particularly Shire stallions and mares, under such regulations as may be prescribed by said organization;
- To do all and every other act or thing necessary, suitable and/or proper for the accomplishment of all or any of the purposes or in the furtherance of any of the powers herein set forth and to do every other act or thing incidental to or appurtenant to or connected with said powers.



>> Go Green << Save Paper & Postage

Receive your Bulletins electronically

Sign up now - Email Karla Stoner

bloomforge@peoplepc.com



Easy Access to Meeting Minutes

www.shirehorse.org

In the 'Members Only' section choose
'Meeting Minutes'

Select the minutes you are interested in
from the menu

Do You have Address – Email changes?

*To make sure your service is uninterrupted,
Please be sure to inform the ASHA office
Of any changes in postal address, email address
Or phone number*

The American Shire Horse Association
Pamela Correll, Secretary
1211 Hill Harrell Road, Effingham, SC 29541
Phone: 843 – 629 – 0072
Email: secretary@shirehorse.org

SAC Program Rate Change for 2011

Shire and Shire Sport Horse Nomination
WAS \$35 Per Horse
NOW \$ 15 Per Horse

Information can be found at:
www.shirehorse.org—under the shows tab

~ All ASHA Regional/ National
Performance Classes to count for points.

What color will I be?

When we started in Shires we dreamed of a 6 of greys. When our first Shire foal was born I was SO excited!! We had imported the grey Shire mare Alneland Countess from England having had her bred to a grey stallion before she left the country. Lo & behold we had a fuzzy smoke grey long legged beauty which I quickly named Ox Kill Silver King. I excitedly called our mentor Sue Wilson in Idaho to tell her the exciting news. "Sue, Sue, we got a grey!" Her first question seemed very strange. She asked me what color he was. I excitedly exclaimed "grey, of course". Her reply floored me. "Then he will be black". Many grey foals later (our stallions have always been grey including our current head-man Methringham Upton Isaac) we have learned to recognize the eventual coat color of the foal when born.

Black foals are born smoke grey, just as Ox Kill King was. (I dropped the Silver when he was registered as he was indeed black). Grey foals on the other hand can be bay or black when born, but a careful examination around the eyes will reveal a scattering of white hairs. The lighter the foal will be on maturing, the whiter the spectacles he or she will have. Bays are easy. They will be born bay.

I should add to this discussion of color the fact that because the grey color is dominant no foal can be grey unless they have a grey parent. Even with 2 grey parents the foal can be bay or black and not grey. Also black is dominant so 2 black parents should produce a black unless both parents carry the recessive red (chestnut/ sorrel) gene and then you can get the rare sorrel foal. This is complicated in Shires because many horses may look & are registered as black, but are actually dark brown (where they carry the Agouti gene that tells the black how to be displayed- "A"= limited to points or "a"= black all over the body), so their foals can be bay. And just like the black parents you can get a sorrel foal from bay parents if they are recessive red carriers as well. Isn't genetics fun!

An unrelated tip that I was taught by Sharon McLin many years ago may help those with foals to register this year. Sketch the markings on your foals as soon after birth as possible (while they are still wet). Within a week, it is harder to make out this marking & by the time we usually register them, the foal coat very often obscures the white marking on the legs.



I'll close by sending a picture of the grey spectacles. I hope this article helps first time Shire breeders to determine the future color of their newborn foals.



Vicky McCaffrey



Editors Note: Google Coat Color Genetics—UC Davis has a great site with more information on coat color. They also offer color genetic testing for horses.

Genetic information to the right was submitted by the Editors.



EE or Ee Black Color		ee Chestnut Color	
---------------------------------------	--	------------------------------------	--

GG or Gg Grey Color		gg No Grey Color	
--------------------------------------	---	-----------------------------------	---

AA or Aa Bay Color		aa Black Color	
-------------------------------------	---	---------------------------------	---

Genetic Formulas and Color Definitions

<u>Genetic Formula</u>	<u>Color</u>
GG	Grey
Gg	Grey
Ee, Aa, gg	Bay
EE, Aa, gg	Bay
Ee, AA, gg	Bay
EE, AA, gg	Bay
EE, aa, gg	Black
Ee, aa, gg	Black
ee, aa, gg	Red or Chestnut
ee, Aa, gg	Red or Chestnut
ee, AA, gg	Red or Chestnut
Ee, Aa, Gg Born Bay	Grey
Ee, Aa, GG Born Bay	Grey
EE, aa, Gg Born Black	Grey

Bay Mare EEaagg X Black Stallion EEaagg

Foal=

50% EEaagg Black

50% EEaagg Bay

Black Mare Eeaa X Black Stallion EEaa

Foal=

50% EEaagg Black

50% Eeaagg Black- Red carrier

Black Mare Eeaa X Black Stallion Eeaa

Foal=

25% EEaagg Black

50% Eeaagg Black- red carrier

25% eeaagg Chestnut or Sorrel

Black Mare EEaagg X Grey Stallion EEaAg

Foal =

25% EEaaGg Grey (Black)

25% EEaAgG Grey (Bay)

25% EEaagg Black

25% EEaagg Bay

Colors listed above are the base colors of the Shire breed—see other color codes at UC Davis web site.

BREED PROMOTION

Recently Completed Events: A big THANK YOU to all of you who are promoting the Shire and ASHA!

Maryland Horse World Expo, Timonium, MD – Maryland State Fair Grounds, January 20-23, 2011. ASHA shared a booth with the Maryland Draft Horse and Mule Association, where a lot of visitors wanted to talk about Shires. Merchandise was sold and a number of breeder's brochures and membership applications were handed out. This is the first time ASHA has had a booth at this event. Organizer: Karla Stoner at bloomforge@peoplepc.com

Glendive Agri-Trade Expo Show, Glendive, MT – February 11. Shires were represented in a booth set up by Leanne Hoagland. Email: bsshires@midrivers.com.

Illinois Horse Fair, Springfield, IL – March 4 – 6, 2011. Jane Hoffman did another great job representing Shires at this event. See the pictures and details in "Member News". Jane would love to have other Shire owners and Shires there as well, so if you are interested in attending this event in 2012, contact Jane at jane_hoffmann@yahoo.com

Montana State Univ. Equine Conference, Bozeman, MT – March 5, 2011 – Shires were again represented in a booth set up by Leanne Hoagland. Email: bsshires@midrivers.com

Nebraska Horse Expo, Lincoln, NE, Lancaster Event Center – March 11 – 13, 2011. Clark Jenson and Crew took Shires to this expo for breed demos. More details will be available in the summer issue of the Members' Bulletin.

Colorado Horse Expo, Denver, CO – March 11 – 12, 2011. Kim Murchison took Shires to this event and gave some great demos. Email: thshire@sopris.net See the pictures and details in "Member News".

Iowa Horse Fair, Des Moines, IA, State Fair Grounds – April 1– 3, 2011. Clark Jenson and Crew took Shires to this expo for breed demos. More details will be available in the summer issue of the Members' Bulletin.

Equine Affaire, Columbus, OH – Ohio State Fair grounds (Expo Center), April 7 – 10. There were breed demos, a breed stall and an ASHA information/merchandise table. Several members brought Shires to the event and Todd Riedel had Shires in each of the Fantasia Performances. There will be pictures and more detail in the summer bulletin – Organizers: Todd Riedel and Emily Cullison; TrailLightfarms@aol.com

Upcoming Events:

Everything Equine, Essex Junction, VT - Robert R. Miller Expo Center, April 30 – May 1. Mike and Turie Sorrell will be representing Shires in breed demos at this event. This will be the first time Shires have participated in this event.

USDF publication is spotlighting Shires and Shire Cross Sport Horses in their breed of the month column. The article will be in the June 2011 issue of their publication. Many thanks to Marcia Meyeda for writing up the article.

Horse Progress Days, Kinzers, PA – July 1 – 2, 2011 – www.horseprogressdays.com - Todd Riedel and Emily Cullison will have Shires at this event and there will be an ASHA booth. We understand some other Shires may participate, but do not have any information at this time. This is a great working horse event and well worth the visit. Stop by the booth. Pictures and other information will be in the summer or fall Bulletin. Contacts:, Todd Riedel and Emily Cullison, TrailLightfarms@aol.com, Booth - Karla Stoner, bloomforge@peoplepc.com

Equine Extravaganza, Doswell, VA, the Meadow Event Park (tentative) – November 6, 2011. Melissa and Geryl Wade are looking into participating in this event. More information to follow.

Equine Affaire, West Springfield, MA – Eastern States Exposition Grounds - November 10 – 13, 2011. Shire breed stall and demos, ASHA booth. More details to follow. Contact Vicky McCaffrey oxkill@capital.net or Karla Stoner bloomforge@peoplepc.com

~If you have an upcoming promotional event for Shires or recently participated in an event, we would like to publicize it in the Members' Bulletin and on the website. Please contact Leanne Hoagland; Editor (bsshires@midrivers.com). **

Feel free to send a picture and short description to the editors for the "Member News" Section! We want to hear from you.

~We can also help with Shire and ASHA information for display and handout. Contact Pam Correll (secretary@shirehorse.org) or Karla Stoner (bloomforge@peoplepc.com).

STALLION - 3 YRS & OVER



All-American: Illusion Farms Remember the Titan, Daniel & Kathleen Hathaway, Fryeburg, ME



Res. All-American: Black Park Chancellor, Jenny Cournoyer, Jefferson, MA
3rd: Illusion Crystal Clear of Ox Kill, Eric & Maribeth Scott, Merced, CA
4th: Huska Millennium Shires Commodore, Heinz & Ursina Naef, Rolling Hills Estates, CA

TWO-YEAR-OLD STALLIONS



All-American: Loud Bridge Louis, Kent Wilson Jones, Lake Crystal, MN
2nd: Howell Brothers Jag, Travis & Casey Howell, Blackfoot, ID

YEARLING STALLIONS



All-American: Hickory Hill Nitro of the Northeast, Janet Long, Epsom, NH



Res. All-American: Legacy's Image, Turie & Michael Sorrell, Concord, VT
3rd: Illusion Farms Last Tango, Daniel & Kathleen Hathaway, Fryeburg, ME

STALLION FOALS



All-American: Clark's Red Top Sir Barrington, Susan Lyons, Chowchilla, CA



Res. All-American: RM's Rubicon Radar, Turie & Michael Sorrell, Concord, VT
3rd: Tally Ho BK's Lonestar Tex, Kimberly N. Parrington-Murchison, Rifle, CO
4th: Knight Haven's I C Hot, Eric & Maribeth Scott, Merced, CA
5th: Big Sky Tuff's Maestro, Brett & Leanne Hoagland, Glendive, MT
6th: Trail-Light Sports Flash, Daniel Todd Riedel, Seville, OH
7th: Trail-Light IM Sidsational, Daniel Todd Riedel, Seville, OH

GELDINGS



All-American: Landcliffe Master, Arlin Wareing, Blackfoot, ID



Res. All-American: Glenmary Hudson, Janet Long, Epsom, NH

3rd: Arron's Cracker, Kent Wilson Jones, Lake Crystal, MN

4th: Pace Farm Pat, Wayne Wareing, Firth, ID

5th: Tally Ho Titan, Kimberly N. Parrington-Murchison, Rifle, CO

6th: Taylor's Kingston, Robert Taylor II, Owego, NY

7th: Tally Ho BK's Tristan Dragonheart, Kimberly N. Parrington-Murchison, Rifle, CO

8th: Tally Ho BK's Triple Platinum, Victoria Hauser, Pueblo, CO

9th: Tally Ho Bentley, Judy Brodland & Kimberly Murchison, Rifle, CO

10th: Tayson Contributor, Janet Long, Epsom, NH

11th: Taylor's Ceasar, Robert Taylor II, Owego, NY

**IT'S SHOWTIME!
2010 ALL AMERICAN RESULTS**

BROOD MARES - 4 & OVER



All-American: Tayson Juliette, Turie Sorrell, Concord, VT



Res. All-American: Sassy Supreme Daisey Marie, Janet Long, Epsom, NH

3rd: Love's Big Sky Harmony, Brett & Leanne Hoagland, Glendive, MT

4th: West Fen Billie, Janet Long, Epsom, NH

YELD MARES - 4 & OVER



All-American: Steege's Cleopatra, Danelle Kinney, Red Wing, MN



Res. All-American: Ox Kill Wonder Woman, Gene & Vicky McCaffrey, Schoharie, NY

3rd: Huska Millennium Acres Cassidy, Steven & Barbara DeWoody, Anza, CA

4th: Axeholme Elusive, Chris & Nanette Osterhoudt, Colfax, WI

THREE-YEAR-OLD MARES



All-American: Dua He Chi's Mercedes, Howell Brothers, Blackfoot, ID

THREE-YEAR-OLD MARES Cont:



Res. All-American: Taylors Agatha, Turie & Michael Sorrell, Concord, VT
3rd: Huska Millennium Shires Phantom Jet, Heinz & Ursina Naef, Rolling Hills Estates, CA

TWO-YEAR-OLD MARES



All-American: Brandt's Arwen, Terri Kipp, Loyal, WI



Res. All-American: Illusion Farms Miss Congeniality, Daniel & Kathleen Hathaway, Fryeburg, ME
3rd: Illusion Farms American Idol, Daniel & Kathleen Hathaway, Fryeburg, ME
4th: Big Sky All That Jazz, Brett & Leanne Hoagland, Glendive, MT

YEARLING MARES



All-American: Hickory Hill Jamie, Robert Taylor II, Owego, NY



Res. All-American: Haugen-Hill Courage Shiraz, Danelle Kinney, Red Wing, MN

IT'S SHOWTIME!
2010 ALL AMERICAN
RESULTS CONT:

YEARLING MARES

Cont:

3rd: Cedar Hill Lady Sedaris, Stacey Golub, East Hampton, CT

4th: Illusion Farms Bittersweet, Daniel & Kathleen Hathaway, Fryeburg, ME

5th: Axeholme Corvallis, Chris & Nanette, Osterhoudt, Colfax, WI

FILLY FOALS



All-American: Millerhouse Gunshot Mogie, Katy Miller, Midlothian, TX



Res. All-American: Northeast Nina, Shane & Cindy Okano, Armstrong, BC

3rd: Summer Rain's Easter Lily, Michelle Simono, Silt, CO

4th: Big Sky Tuff's Morning Dew, Brett & Leanne Hoagland, Glendive, MT

5th: Trail-Light Secret Desire, Daniel Todd Riedel, Seville, OH



Congratulations!
Colleen Coleman and Her Colt

***Heart Mt. Midnight
Special***

Grand Champion Stallion
2011 National Western Stock
Show; Denver CO

Moving from All-American to All-North American Contest

In 2010, the Shire All-American program was reestablished and proved to be a successful event. The committee members making this possible are as follows: Jenny Cournoyer, Janet Long, Karla Leum Stoner, and I.

There were over 100 horses that qualified for 2010's Shire All-American contest with slightly over 50 horses nominated into the contest. Excellent feedback has been obtained and several participants are looking forward to this year's contest.

Results have been uploaded to the ASHA website under Shows as well as being printed in the Draft Horse Journal's (DHJ) spring issue.

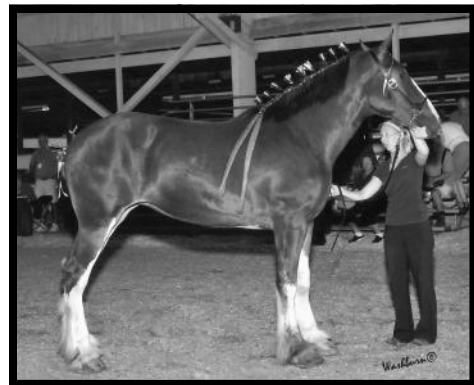
The 2011 contest is changing gears as the DHJ moves forward to an All-North American Contest. The Canadian Shire Horse Association (CSHA) and the American Shire Horse Association will be working together to accomplish this goal. Both organizations are very excited about this endeavor!

Nomination forms will be available soon, upon DHJ approval. The format and the nomination process will be very similar to last year. The nomination deadline will also stay the same (November 15th). Any questions please feel free to contact me or any of the committee members.

Submitted by,

Danelle Kinney

All-North American Committee chair



Shire Alternative Competition (SAC) Program

- **Do you show your Shire in other competition other than ASHA sanctioned shows?**
- **Do you want recognition for those accomplishments?**

We Have Answered the Questions for you!

The SAC Program knows that the Shire horse is a talented and versatile individual that performs in many activities and events outside of the ASHA sanctioned National and Regional Shows. The goal of the SAC program is to recognize those horses and owners for their accomplishments in the competitive events that they enjoy.

SAC now approves many equine organizations, fairs, local draft horse associations and trail rides. Many members live and participate in local events and activities that fall outside the category of an "ASHA-approved show."

You can earn SAC points on your Shire horse (s) and work towards SOM (Shire of Merit) awards. It is as simple as filling out a few forms, paying your nomination fees for the horse (s) and participating in your events as usual. ** ASHA recognizes these points and applies them to the permanent show record of each horse.

For More Information Contact Leanne Hoagland SAC Secretary

Email: sacprogram@midrivers.com or <http://www.midrivers.com/~sacprogram>

Open to all ASHA Registered Shires and Shire Sport Horses

IT'S SHOWTIME: 2010 SAC RESULTS

Shire Stallions

Name of Horse	Total Points
Illusion Farms Tuff Hedeman	11
Riverdale Traveling Salesman	3

Shire Mares

Name of Horse	Total Points
Axeholme Elusive	16
Loves Big Sky Harmony	9
Axeholme Corvallis	7

Shire Single Pleasure Driving

Name of Horse	Total Points
Illusion Farms Tuff Hedeman	6
Tally Ho BK's Triple Platinum	6
Big Sky All That Jazz	4
Loves Big Sky Harmony	4

Shire Single Hitch

Name of Horse	Total Points
Big Sky All That Jazz	11
Tally Ho Bentley	11
Tally Ho BK's Tripple Platinum	2
Tally Ho Buckley	2

Shire Multiple Hitch

Name of Horse	Total Points
Tally Hh BK's Tristan of Dragonheart	12
Tally Ho Bentley	12
Tally Ho Griffen	3
Tally Ho Titan	2
Tally Ho Buckley	1
Tally Ho BK's Tripple Platinum	1

Shire Single Farm Classes

Name of Horse	Total Points
Tally Ho Bentley	7
Big Sky All That Jazz	4
Loves Big Sky Harmony	1

Shire Multiple Farm Classes

Name of Horse	Total Points
Tally Ho Buckley	9
Tally Ho BK's Tripple Platinum	9
Tally Hh BK's Tristan of Dragonheart	7
Tally Ho Bentley	7

Shire Showmanship

Name of Horse	Total Points
Loves Big Sky Harmony	8
Axeholme Elusive	4

Shire Sport Horse Dressage

Name of Horse	Total Points
Commander's Interrogator	16

Shire Games

Name of Horse	Total Points
Tally Ho Buckley	12
Loves Big Sky Harmony	11
Tally Ho Bentley	10

Shire Walk Trot Pleasure

Name of Horse	Total Points
Loves Big Sky Harmony	15
Tally Ho Bentley	5
Tally Ho Buckley	1

Shire English Pleasure

Name of Horse	Total Points
Loves Big Sky Harmony	9

Shire Western Pleasure

Name of Horse	Total Points
Loves Big Sky Harmony	7

IT'S SHOWTIME: 2010 PREMIERE POINTS RESULTS

Senior Stallions

- 20 - ILLUSION FARMS REMEMBER THE TITAN
- 11 - BLACK PARK CHANCELLOR [1800S]
- 9 - HUSKA MILLENNIUM SHIRES COMMODORE
- 5 - MUFASA
- 5 - YF ACES R WILD
- 4 - YF MISTER APOLLO
- 3 - ILLUSION CRYSTAL CLEAR OF OX KILL
- 3 - WINDY NIGHT NICHOLAS
- 3 - JENSON'S POPPI KNIGHT
- 1 - HUSKA MILLENNIUM SHIRES SWEET WILLIAM

Junior Stallions

- 55 - HICKORY HILL NITRO OF THE NORTHEAST
- 26 - LEGACY'S IMAGE
- 18 - LOUD BRIDGE LOUIS (C1743)
- 10 - RM'S RUBICON RADAR
- 10 - ILLUSION FARMS LAST TANGO
- 7 - CLARK'S RED TOP SIR BARRINGTON
- 7 - HICKORY HILL DIE HARD OF THE NORTHEAST
- 6 - TALLY HO BK'S LONESTAR TEX
- 4 - TALLY HO TUFF'S HUCKLEBERRY OF SHADY GROVE
- 4 - BIG SKY TUFF'S MAESTRO
- 3 - TRAIL-LIGHT SPORTS FLASH
- 3 - HMA SHIRES MAGNUS COMMODORE
- 2 - CHARLOTTE'S WEB OF DUNROVIN
- 2 - RIVERDALE TRAVELLING SALESMAN
- 1 - NORTH COUNTRY'S PRINCE OF STONEHAM
- 1 - TRAIL-LIGHT IM SIDSATIONAL
- 1 - KNIGHT HAVEN'S I C HOT
- 1 - ILLUSION FARMS REMEMBER THE SCOTS
- 1 - OX KILL JOSE ALERICO

Stallion Breeding Points

- 250.5 - ISLES FIELD DANNY BOY
- 43.5 - ILLUSION FARMS MISTER SAMPSON
- 23 - DEIGHTON BLACK KNIGHT
- 15.5 - SLADBROOK JUBILEE SPIRIT (47062)
- 15 - COWERSLANE CONCORDE
- 14.5 - ISLES FIELD GREY KING (46806)
- 11 - METHERINGHAM UPTON ISAAC
- 9 - BROADHEATH BARON
- 9 - HUSKA MILLENNIUM SHIRES SWEET WILLIAM
- 8.5 - FOX VALLEY ORION
- 8 - TREMOELGOCH COURAGE (46903)
- 8 - FATHER HILL CAPTAIN MIDNIGHT
- 8 - SCOTLAN PREMIER
- 8 - COWERSLANE NOMINATION
- 7 - RICE CREEK CASSANOVA
- 7 - ILLUSION FARMS TUFF HEDEMAN
- 6 - FOX VALLEY OLIVER
- 4.5 - SKANE SPRINGS FLASH OF LIGHTNING (47020)
- 4.5 - RED BRAE MARSHALL
- 4 - ILLUSION CRYSTAL CLEAR OF OX KILL
- 4 - TREMOELGOCH COURAGE
- 3 - AVALON'S LEGIONNAIRE
- 3 - FOREST HILLS BREMER
- 2.5 - GARREG WILLIAM
- 2.5 - DEIGHTON ROYAL DIPLOMAT

Geldings

- 50 - GLENMARY HUDSON
- 24 - ARRON'S CRACKER (NB 451)
- 18 - TAYLORS KINGSTON
- 10 - TALLY HO BK'S TRISTAN OF DRAGONHEART
- 10 - TAYSON CONTRIBUTOR
- 9 - TAYLOR'S CEASAR
- 8 - TAYLORS MILTON
- 8 - TALLY HO TITAN
- 8 - MERSEYSIDE YORK-SHIRE
- 6 - TALLY HO BENTLEY
- 6 - HUSKA MILLENNIUM SHIRES BRAVE-HEART
- 6 - TALLY HO BK'S TRIPLE PLATINUM
- 5 - LAZY S MIDNIGHT BILL
- 4 - MIDNIGHT STAR'S TEJAS CAPTAIN
- 4 - MIDNIGHT STAR'S WALTER B.
- 2 - KNIGHT HAVEN'S CRYSTAL CLEAR KNIGHT
- 2 - SMITHS /S MOONLIGHT VOYAGER
- 2 - AVALON'S LEGACY
- 1 - KNIGHT HAVEN'S JOHN WILLIAM
- 1 - SHANNASHAWNS COUNTRY ROLLER
- 1 - LAZY S MIDNIGHT BOB

Senior Mares

- 54 - TAYLORS AGATHA
- 53 - SASSY SUPREME DAISEY MARIE
- 30 - DUA HE CHI'S MERCEDES
- 26 - TAYSON JULIETTE
- 17 - WEST FEN BILLIE (146621)
- 14 - STEEGE'S CLEOPATRA
- 9 - OX KILL WONDER WOMAN
- 9 - HUSKA MILLENNIUM SHIRES PHANTOM JET
- 8 - MIDNIGHT STAR'S YTRIA
- 8 - GLADWIN COURAGES KORRIE [1923M]
- 6 - OX KILL SPECTACULAR
- 6 - STORYBOOK'S L'ASHES
- 5 - JENSON'S DIPLOMAT KATRINA
- 4 - ILLUSION FARMS KELLIE KYLE
- 4 - O'BANNONS CRYSTAL SUNRISE
- 3 - AXEHOLME ELUSIVE
- 3 - JENSON PREMIER JANET
- 3 - TRAIL-LIGHT DAZZLING JAZZ
- 2 - LAZY S MIDNIGHT BEAUTY
- 2 - SHIRLEY'S PRIDE OF THE SCOTS (146870)
- 2 - O'BANNONS CRYSTAL LILY
- 2 - LAZY S MIDNIGHT BELL
- 2 - LOVES BIG SKY HARMONY
- 2 - JENSON'S TIMBER AMBER
- 2 - TRAIL-LIGHT K. C.
- 1 - NORTHEAST FAYE
- 1 - LAZY S ACE'S ANNIE
- 1 - HUSKA MILLENNIUM ACRES CASSIDY
- 1 - MONTAGUES LONG TALL SALLY (147157)
- 1 - TRAIL-LIGHT MEGGS

Junior Mares

- 32 - ILLUSION FARMS MISS CONGENIALITY
- 19 - HICKORY HILL JAMIE
- 16 - NORTHEAST NINA
- 14 - HAUGEN-HILL COURAGE SHIRAZ
- 11 - HICKORY HILL LEAH
- 8 - ILLUSION FARMS BITTERSWEET
- 8 - TALLY HO BK'S HAILEY
- 8 - TAYLORS AMELIA
- 7 - CEDAR HILL LADY SEDARIS
- 6 - MILLERHOUSE GUNSHOT MOGIE
- 5 - MERSEYSIDE LOVELY RITA
- 4 - FOGGY MEADOWS GUINEVER
- 4 - ILLUSION FARMS AMERICAN IDOL
- 4 - SUMMER RAIN'S EASTER LILY
- 4 - RM'S HIDDEN BARON
- 4 - BIG SKY ALL THAT JAZZ
- 2 - TRAIL-LIGHT SECRET DESIRE
- 2 - HMA SHIRES BLACK PEARL
- 2 - BIG SKY TUFF'S MORNING DEW
- 1 - KNIGHT HAVEN'S CRYSTAL MYSTIQUE
- 1 - NORTH COUNTRY KATRINA'S KALI
- 1 - ILLUSION FARMS WINSTON'S DEBUTANTE
- 1 - AXEHOLME CORVALLIS
- 1 - TRAIL-LIGHT RADIANT SURPRISE
- 1 - HICKORY HILL ELEANOR

Mare Breeding Points

- 127.5 - DEIGHTON HELENA (147355)
- 34 - SHIRLEY'S PRIDE OF THE SCOTS (146870)
- 24.5 - WEST FEN MAGIC (146622)
- 17 - SKELTON SOPHIE (146748)
- 17 - SHERWOODSHIRE CASCADE
- 16 - RED BRAE LADY DIANE (147142)
- 15 - MONTAGUES LONG TALL SALLY (147157)
- 13 - ILLUSION FARMS S.N. AMERICAN MAID
- 13 - WINDCHIME ABBEY
- 12.5 - DEIGHTON PANDORA (145553)
- 11 - CUBLEY ZOE (147229)
- 10 - ARRON'S DAINTY
- 10 - JENSON PREMIER JANET
- 9.5 - WEST FEN BILLIE (146621)
- 8 - CRAVEN SARA
- 7 - STARCASTLE MAYFLOWER
- 7 - STEEGE'S KATIE (3/4-SHIRE)
- 7 - FOXOAKS BLUEBELL (147141)
- 7 - CAERBERLLAN DIAMOND (147213)
- 6 - MURRAY CROFT HANNAH (146862)
- 5.5 - HUSKA MILLENNIUM'S BRISTOL'S PHANTOM
- 5 - NORTHEAST ARISTOCRAT'S ABBIGAIL
- 5 - CRYSTAL PEPSI
- 5 - EDWARDS PRINCESS OF VISTA RIDGE
- 5 - FOX VALLEY MILADY
- 4.5 - WHINMOOR WONDER [1772-M]
- 4.5 - CEDAR MANOR ENGLAND'S ROSE
- 4 - TALLY HO LEGACY
- 4 - SHIRE CREST DE BELLA
- 4 - MIDNIGHT STAR'S OPAL
- 3.5 - OX KILL MADAM SOPHIA
- 3.5 - TAYSON JULIETTE
- 3 - ENGLANDER'S MAE WEST
- 3 - FOX VALLEY FIRST IMPRESSION (145318)
- 3 - NEW ENGLAND TIFFANY
- 3 - DUA HE CHI'S SCHAQUILLE
- 2.5 - TRAIL-LIGHT MEGGS
- 2.5 - FOX VALLEY CAMEO
- 2.5 - DOUBLETREE DIXIE
- 2 - TALLY HO BK'S LADY APRIL
- 2 - GAYDON TEJAS SPECIAL LADY
- 2 - LOVES BIG SKY HARMONY
- 2 - WANDAMERE FLOSS
- 2 - EL RANCHO GRANDE DIAMOND
- 2 - MIDNIGHT STAR'S PANDORA
- 2 - TALLY HO MARION
- 2 - GRANDVIEW LADY SHANNO
- 2 - CHESTERFIELD'S MAID MARIAN OF MAGNUS
- 2 - SUMMER RAIN & BK'S LIL CHARMER
- 1.5 - FOX VALLEY THOMASINA
- 1 - TRAIL-LIGHT K. C.
- 1 - PRAIRIE CREEK CHARLOTTE
- 1 - HUSKA MILLENNIUM'S CRYSTAL
- 1 - FOX VALLEY DIAMOND (146079)
- 1 - COLD ACRES CRYSTAL ICE [1878-M]
- 1 - HATHAM GREEN MIDNIGHT LADY (146468)
- 0.5 - LAZY S MIDNIGHT BEAUTY
- 0.5 - LOXTERCAMP'S TINA (3/4 SHIRE)
- 0.5 - SHANNASHAWNS LADY BUDD
- 0.5 - ILLUSION FARMS KELLIE KYLE
- 0.5 - TRAIL-LIGHT MYSTICAL STAR
- 0.5 - FOX VALLEY ABIGAIL (146649)
- 0.5 - TRAIL-LIGHT DAZZLING JAZZ
- 0.5 - JENSON'S DIPLOMAT KATRINA

Editors Note: You can see more on the Premiere Points Program on the ASHA Web Site. The points you see here can also be seen on each horse's show record on the ASHA online stud book.

MEMBER NEWS:

What's Exciting in Your Neck of the Woods?

~ **December 2010: Cindy Temaat** Kansas gave wagon rides with her Shire Mares for a Christmas event. (Pictured at the right)



~ **Feb 11, 2011: Leanne Hoagland** attended the local Glendive Agri-Trade Expo Show and had a booth where she promoted the Shire and their business.

Then on **March 5, 2011** she attended the Montana State University Equine Conference where she promoted the Shire and their business. 500 equine enthusiasts attended.



~ **March 2011: Kim Murchison** attended the Colorado Horse Expo where she promoted the Shire horse and her business. Pictured right is her demonstration where she road her gelding Ben and drove Dickens in tandem out front.



~ **January 2011: Brit and Sharon McLin** showed Midnight Star's Queen Amadala at the National Western Stock Show in January, entering halter, mare cart and ladies' cart at her first-ever show. Tough competition (3 All-American mares in the all-breed halter class, 27 entries in ladies' cart!) but we had fun showing with Hannah Mann, seen here driving. (Picture at Right)

~ **March 2011: Jane Hoffman** attended The Illinois Horse Fair was held in Springfield, Illinois. Jane submitted the following: The demos went off without a hitch and my horse, Gus was a big hit. I showed him in both demos with a cart. The crowd was so impressed with his flexibility and beauty. I had people following us back from the demo to ask questions and gather material about the Shire breed. My biggest moment was when Jill McCrae, trainer and author approached me to comment on our performance. She made mention on how she enjoyed Gus's movements. Gus and I did some tight movements at a trot, similar to the docking techniques that the six horse hitches use. The arena for our demos was very small and crowded with our wagons, carriages, carts and farm equipment but the Shire horse made a big impression with his flashy style. Several hours after our demos were completed I was approached by Jill McCrae. She is a world-renowned trainer and author. She has a well rounded background in showing hunters and event horses as well as dressage horses. I have highlighted Jill McCrae in the enclosed brochure from the fair. She presented her Lusitanos in the fall at the Equine Village of the 2010 World Equestrian Games at the Kentucky Horse Park. She was very impressed with Gus's maneuvers under cart. What an awesome moment for Gus and me!! Maybe she might consider the Shire for her next horse. We can only hope.



Tours-One Way You can Share the Shire

Jenson Shires encourages educational tours from schools and other groups. They are able to come and learn with hands on experience and handling Shires. Large groups are normally broken down into approximately 20 people per group. We then have 2 to 3 stations for them to visit while on the farm.

We cover general horse related topics where we encourage lots of questions. One of the favorite sessions is the reproduction session. Here we



cover all aspects of raising foals. The next station is set up to be a hands on session where we bring them into the reproduction barn. We have a safe holding facility built with pipe. Students are allowed to walk along side of a Shire. They are able to touch it and realize how big the horse really is. The tour is then taken to another part of the barn where a foal is held (in season) and each of them can touch and handle the foal. This session is generally done by Sue and is by far the most popular of all the stops they make.

We feel that an educational tour allows them to get up close, handle and feel the big horses and foals, and gives them an experience that is memorable. The involvement of the students in question/answer sessions allows them to find out more about the Shire.

Some of the tours are by 4-H clubs and they are smaller in numbers so stations are not required. They take a different approach to the Shire as most of them have a horse of their own so in these instances we cover the disposition of the horse and the accomplishments of the Shire under saddle and working.

Another opportunity that we have is when the local college brings their pharmaceutical students out during the semester. We provide an in field discussion of various chemical uses in reproduction of horses. The pharmaceutical student training has been very positive.

Submitted by:
Clark Jenson

Editor's Note: Before doing projects like this make sure you have consulted insurance for liability issues!! Doing these events are at your own risk.



Quarterly Registrations: Jan. 1, 2011 to March 31, 2011

Remember to check your documents for errors upon receipt from the Secretary.

The information here is from the database at the office.

If there is an error here you need to contact the office and have it corrected.

DANGEL'S DAKOTA IRENE - 24550-M

Mare; Black. Large, four-pointed star between eyes; bottom point extends to middle of face. Left foreleg no white markings. Right foreleg white to knee in front, above knee behind. Left and right hind legs white to just below hocks behind and in front. Foaled May 30, 2010; Bred and owned by PAUL DANGEL, Viborg, SD; Sire DANGEL'S BO JANGELS 22886-S; Dam DANGEL'S DAKOTA TORNADO 24139-M.

DANGEL'S DAKOTA ISABELL - 24551-M

Mare; Black. Wide blaze from upper forehead angling slightly toward left side of face to inside both nostrils to upper lip; lower lip white. Left and right forelegs white to mid-knees. Left hind leg white to below hock behind, to mid-gaskin in front. Right hind leg white to below hock behind, to just above hock in front. Large white patch on lower abdomen in front of stifles visible from both sides. Foaled March 17, 2010; Bred and owned by PAUL DANGEL, Viborg, SD; Sire DANGEL'S BO JANGELS 22886-S; Dam DANGEL'S MAIDEN POCAHONTAS 23621-M.

DUKE'S SADIE - 24553-M

Mare; Black. Irregular blaze extending into stripe offset to left side, widening at nose between nostrils; upper and lower lips white; whorl mid-forehead. Left foreleg white to mid-knee in front, slightly higher behind. Right foreleg white to top of knee in front, slightly higher behind. Left hind leg white to above ankle behind and in front with a upward "tab" inside; white spot on hock inside; white stripe in front from gaskin to stifle. Right hind leg white to upper cannon behind, to lower gaskin in front. Small white spot on lower left abdomen just in front of stifle visible from left side. Small white spot on girth line just behind left elbow. Foaled May 11, 2010; Bred and owned by SHARON N. DUKE, Greeneville, TN; Sire WANDAMERE HUMPHREY BOGART 22716-S; Dam DUKE'S MS. PEPPER 23985-M.

JENSON'S DIPLOMAT AMY - 24560-M

Mare; Black. Small, elongated "S" shaped spot centered mid-forehead; small, oval spot just above and to right of right nostril. Left foreleg white to ankle. Right foreleg no white markings. Left and right hind legs white to mid-cannons. Foaled June 17, 2010; Bred and owned by JENSON SHIRES, Blair, NE; Sire DEIGHTON ROYAL DIPLOMAT (46942) 22831-S; Dam STEEGE'S ATHENA (7/8-SHIRE) B-23780-M.

JENSON'S DIPLOMAT EBONY - 24559-M

Mare; Black. Wide blaze from top of forehead with a "tab" over left eye then tapering inward slightly down center to face includes left nostril, inside right nostril includes upper and lower lips and chin. Left foreleg white to above knee in front, to mid-knee behind. Right foreleg white to below knee in front, to above knee behind. Left hind leg white to just below hock behind and in front. Right hind leg white to below hock behind, to above hock in front. Small white spot on left side barrel mid-way between front and hind legs and half-way down from back. Microchip # 900026000101517. Foaled May 19, 2010; Bred and owned by JENSON SHIRES, Blair, NE; Sire DEIGHTON ROYAL DIPLOMAT (46942) 22831-S; Dam DAYSRING EVIE 23883-M.

JENSON'S DIPLOMAT POLLY - 24558-M

Mare; Black. Wide blaze from upper forehead tapering down center of face inside both nostrils to muzzle; two black spots in blaze one on top of the other just above right eye. Left foreleg no white markings. Right foreleg white to pastern, then another band of white from below knee to above knee; bands of white a separated by a band of black from pastern to below knee. Left hind leg white to below hock behind, to above hock in front. Right hind leg white to below hock behind, to mid-gaskin in front. Microchip # 900026000100551. Foaled April 24, 2010; Bred and owned by JENSON SHIRES, Blair, NE; Sire DEIGHTON ROYAL DIPLOMAT (46942) 22831-S; Dam JULLIANS PRISSY 24482-M.

JENSON'S MONTE JOYCE - 24561-M

Mare; Black. Narrow blaze from top of forehead tapering inward slightly down middle of face ending at a point between nostrils on muzzle. Left and right forelegs no white markings. Left and right hind legs white to below hocks behind, to mid-hocks in front. Foaled May 21, 2010; Bred and owned by JENSON SHIRES, Blair, NE; Sire SHAD-LAC LORD MONTGOMERY (C.749) 22973-S; Dam JENSON'S DIPLOMAT JOY 23963-M.

MIDNIGHT STAR'S FIONA - 24548-M

Mare; Black. Medium blaze from mid-forehead evenly down face, widening slightly to just inside nostrils; black spot inside left nostril and in center of upper lip. Left foreleg white spot on lateral coronary band and lateral heel bulb. Right foreleg no white markings. Left and right hind legs white to two-thirds cannons behind, to middle of hock joints in front. Foaled April 16, 2010; Bred and owned by BRIT C. and SHARON McLIN, New Castle, CO; Sire STARCASTLE BISHOP [1793S] 23123-S; Dam SASY FARMS GALLANT LIL 23747-M.

PERFECT PEACE DANCING MOONLIGHT - 24552-M

Mare; Black. Medium blaze from mid-forehead tapering inward down center of face to muzzle. Left and right forelegs white to mid-cannons. Left and right hind legs white to mid-cannons behind and in front. Foaled November 5, 2009; Bred and owned by KATHY WHITAKER, Quarryville, PA; Sire FOX VALLEY OLIVER 22682-S; Dam FOX VALLEY SWEET SUE (144964).

ROYAL KNIGHT'S LADY ALEXANDRA OF BEDFORD - 24556-M

Mare; Black. Narrow, hour-glass shaped blaze from mid-forehead to below level of eyes then tapering inward to just above nostrils; a narrow stripe extends out to touch the top of right nostril; left side touches inside of left nostril to muzzle; upper and lower lips white. Two whorls centered between eyes one above the other. Left and right forelegs, no white markings. Left and right hind legs white to below hocks behind, to above hocks in front. Foaled March 22, 2010; Bred and owned by GERYL and MELISSA WADE, Bedford, VA; Sire ROYAL VIEW SENSATIONAL THOMAS 23175-S; Dam COUNTRY PRIDE'S LILLIE MAY 23950-M.

ROYAL KNIGHT'S LADY ELIZABETH OF BEDFORD - 24555-M

Mare; Black. Medium blaze from mid-forehead down center of face widening to include right nostril, inside left nostril to muzzle; muzzle and left side of lower lip white; black spot on muzzle just below right nostril. Left foreleg white to knee in front, higher behind. Right foreleg white to fetlock with narrow stripe to knee outside. Left and right hind legs white to below hocks behind, to above hocks in front. Foaled May 21, 2010; Bred and owned by GERYL and MELISSA WADE, Bedford, VA; Sire ROYAL VIEW SENSATIONAL THOMAS 23175-S; Dam DUKE'S LADY ELIZABETH 23986-M.

ROYAL KNIGHT'S LADY VICTORIA OF BEDFORD - 24557-M

Mare; Black. Wide blaze from upper forehead with a "tab" just over left eye and an indented notch above right eye tapering slightly to include right nostril, inside left nostril; upper and lower lips white; small black spot on muzzle. Left and right forelegs, white to knees in front, higher behind. Left and right hind legs, white to below hocks behind, above hocks in front. Small white spot on lower abdomen just behind the girth line on left side. Two whorls midway down neck at mane line, one on each side. Foaled April 25, 2010; Bred and owned by MELISSA WADE, Bedford, VA; Sire ROYAL VIEW SENSATIONAL THOMAS 23175-S; Dam EATON ACRES MASTERMIND'S APRIL MAGIC 24176-M.

SHIREDALE JOEY'S ADRIANNA (149515) - 24549-M

Mare; Bay. Star, strip, snip, lower lip white with dark spot/circle on lower lip. Whorl on ventral midline mid-cervical. Left and right forelegs mid-carpal socks. Left hind leg white to hock, extends dorsally; spot of white just below stifle. Right hind leg white to hock, extends dorsally. Microchip #151406373A. Foaled February 23, 2009; Bred and owned by KIMBERLY OEST, Phoenix, AZ; Sire GRONANT JOSEPH (47188) ; Dam BLACK FOREST IDES OF MARCH (146450) 24270-M.

SUDDEN CREEK JENNY - 24554-M

Mare; Black. Large oval star from mei-dorehead to middle of face; snip on muzzle between nostrils. Left foreleg white to knee. Right foreleg white to knee in front, above knee behind. Left and right hind legs white to just above hocks behind, to hocks in front. Foaled May 10, 2010; Bred and owned by KEN KNUTH, Slayton, MN; Sire DEIGHTON ROYAL DIPLOMAT (46942) 22831-S; Dam SUDDEN CREEK EBONY 24072-M.

BARRINGTON'S DUKE - 23339-S

Stallion; Black. Three-pointed blaze with top point starting centered mid-forehead with other two points over each eye, then tapering inward to stripe traveling down center of face to include both nostrils and bottom lip; black spot on muzzle. Left foreleg white to fetlock behind, slightly higher in front. Right foreleg white to knee, slightly lower inside. Left and right hind legs white to mid-cannons behind, to hocks in front. Foaled July 16, 2010; Bred by SHARON N. DUKE, Greeneville, TN Owned by SHERRI HILLARD, Tyler, TX; Sire DUKE'S CINCO DE MAYO 22758-S; Dam DUA HE CHIT'S REBECCA OF OAKMONT 23066-M.

DANGEL'S DAKOTA MITCHELL - 23335-S

Stallion; Black. Large inverted tear drop from mid-forehead to middle of face conjoined to a narrow stripe that widens slightly between nostrils ending at muzzle; white patch on bottom lip. Left foreleg white to mid-cannon. Right foreleg white to just below knee behind only. Left and right hind legs white to just above hocks behind and in front. Foaled April 1, 2010; Bred and owned by AMANDA and MEGAN DANGEL, Viborg, SD; Sire DANGEL'S BO JANGELS 22886-S; Dam DANGEL'S APRIL BELLS 23624-M.

DANGEL'S DAKOTA SPENCER - 23336-S

Stallion; Black. Medium blaze from mid-forehead down center of face widening to include left nostril, inside right nostril to upper lip; white on lower lip. Left and right forelegs streaks of white mixed with black to knees. Left and right hind legs white to mid-hocks behind and in front. Foaled April 29, 2010; Bred and owned by AMANDA and MEGAN DANGEL, Viborg, SD; Sire DANGEL'S BO JANGELS 22886-S; Dam DANGEL'S MORNING GLORY 24000-M.

FOUR L'S BLACK STARCASTLE JOHN - 23338-S

Stallion; Black. Wide blaze from mid-forehead down center of face tapering inward between nostrils to muzzle. Left foreleg white to knee. Right foreleg no white markings. Left and right hind legs white to below hocks behind and in front. Foaled July 8, 2009; Bred and owned by LEANDRA REUBLE and CLIFF KELSEY, Coupeville, WA; Sire STARCASTLE CHALLENGER [1792S]; Dam STARCASTLE MARIONETTE [1876M].

HEART MT. MIDNIGHT SPECIAL (C.1831) - 23334-S

Stallion; Black. Very wide blaze from top of forehead widening over both eyes then tapering inside eyes and widening again just below lever of eyes to include both nostrils back to just in front of jaw bone. Left foreleg white to elbow. Right foreleg white to above knee. Left and right hind legs, white to hocks behind, to stifles in front, then irregularly up into thigh and hip area. White spot on girth line just behind elbow and a second spot just above it on both left and right sides. White down front from throat latch to point of shoulder. Two large white spots on neck just above level of withers both left and right sides. Foaled March 11, 2009; Bred and owned by F. J. PFANNENSTIEL, Powell, WY; Sire RUSKINGTON DANNY (C.499) 22876-S; Dam SHIRLEY'S MIDNIGHT (147277).

MIDNIGHT STAR'S FRISCO - 23333-S

Stallion; Dark Bay. Medium blaze with square top mid-forehead, small bump out above right eye, broadens around both nostrils, ends at corner of mouth on right, on upper lip on left; lower lip white. Left foreleg white to lower knee, with dark "V" to mid-cannon medially. Right foreleg white at coronary band laterally only. Left and right hind legs, white to three-quarter cannons behind, to middle of hock joints in front. Foaled April 21, 2010; Bred and owned by BRIT C. and SHARON McLIN, New Castle, CO; Sire STARCASTLE BISHOP [1793S] 23123-S; Dam GALLANT KATE 23005-M.

MOUNTAIN M JACOB'S PRINCE CHARLES - 23337-S

Stallion; Black. Wide blaze going out over both eyes narrowing inside eyes down center of face to just inside nostrils to muzzle; white chin; black spot lower lip left side; white on throat latch. Left foreleg white to above knee, slightly higher outside; roaning inside leg. Right foreleg white to above knee behind, inside and slightly higher outside; black to knee in front. Left hind leg white to mid-cannon behind, to ankle outside, to hock inside, to stifle in front. Right hind leg white to below hock behind, to mid-gaskin outside, to stifle in front. Roaning on flanks, small amount of roaning on withers left side; large white spot lower, right abdomen from girth line back to just in front of stifle; small white spot lower, left abdomen just in front of stifle; roaning on chest. Foaled May 21, 2009; Bred and owned by DUANE and J. C. STEVENSON, Moore, ID; Sire HAWKS' PRAIRIE BABE'S JACOB 22769-S; Dam WANDA-MERE PEARL 22895-M.

DEIGHTON LONGSHANKS (NB1110) - 20253-G

Gelding; Black. Full blaze with fleshed muzzle and lower lip black, skin patch on upper lip; central whorl above eye level. Left foreleg white to knee, white hoof. Right foreleg white to just above knee, white hoof. Left and right hind legs white to above hocks in front, white hooves. Whorl on point of right and left stifle, whorl on inside of both elbows. Microchip # 95800001648360 Foaled May 18, 2009; Bred by S. GOULDEN, UK Registered by JANET L. LONG, Epsom, NH; Sire PENRHOS BRAVE HEART (47110); Dam DEIGHTON OXTON ROSE (A. 00298) .

WELCOME NEW MEMBERS

Thank You for Supporting the Shire

Joanne Therriault

15830 Softwood road
Elbert CO 80106

Anthony Onorati

1150 Paradise Drive
Lemoore CA 93245

James Weatherwax

3568 County Route 70A
Hornell NY 14843

Antoinette Depaiva

4825 West Avenue K-10
Lancaster CA 93536

Michael Down

19608 South Spangle Creek RD
Spangle WA 99031

Todd J. McClarin

12838 North 85th Avenue
Peoria AZ 85381

Michael Sorrell

PO Box 107
Concord VT 05824

Pamela Bellerose

1111 Smith road
Weaver AL 36277

Josepha Mangano

18405 Baker Road
Umatilla FL 32784

Jessica Will

4281 S. Rim Road
Gilbert AZ 85297

Brandie Korn

3163A Privateer Street
Lemoore CA 93245

Belinda Leonard

41 Mount Brisbane Road
Mt. Pleasant Queensland 4521
Australia

Welcome to ASHA. If you do not receive a welcome packet please contact our office or a BOD member.

If you are a new member and are not listed here contact us and we will give you the proper welcome.

If we have an error in your information please contact our Secretary.
email: secretary@shirehorse.org

Quarterly Transfers:

Jan. 1, 2011 to March 31, 2011

Remember to check your documents for errors upon receipt from the Secretary.
Contact us if you find any problems.

20160-G -The Gelding, KING CREEK TRIGGER (15/16-SHIRE)
from TONI HUSS, Adair, IA transferred to CHRISTI
FONTAINE, Hudson, CO 2/4/2011

C-20240-G -The Gelding, STORYBOOK'S ECLIPSE (15/16 SHIRE)
from VICKI SCHMIDT, Hebron, ME transferred to SUZANNE
MERCHANT-PETERS, Cody, WY 7/30/2010

23005-M -The Mare, GALLANT KATE
from BRIT C. and SHARON McLIN, New Castle, CO
transferred to DARIN and GINA HENRY, Windsor, CO
1/2/2011

23101-S -The Stallion, TALLY HO BLACK KNIGHT'S JESTER
from BERNARD KUCZEK, JR., Burnt Hills, NY transferred to
CHAD BAUDER, Westerlo, NY 2/9/2011
transferred to AL and KAREN MYERS, Ferrisburgh, VT
2/10/2011

23153-S -The Stallion, ECHO VALLEY JAGGER
from JULIE DAVIS, Elbert, CO transferred to JOANNE
THERRIAULT, Elbert, CO 9/23/2010

23177-S -The Stallion, STORYBOOK'S SPARTACUS
from SARAH A. WILLIAMS, Mexico, MO transferred to
KIMBERLY GRIGGS, Linn Creek, MO 1/15/2011

23191-S -The Stallion, STERLING WHITE LIGHTNING
from ARDEN A. and PATRICIA FERRELL, Ocala, FL
transferred to ANNETT ZERBIN, Holly, MI 6/1/2008
transferred to BRUCE A. LLOYD, Milford, MI 6/1/2010

23303-S -The Gelding, TRAIL-LIGHT IM SIDSATIONAL*
from DANIEL TODD RIEDEL, Seville, OH transferred to
CLAUDIA JORGENSEN, Gandeeville, WV 1/23/2011

23318-S -The Stallion, TALLY HO BK'S LONESTAR TEX*
from KIMBERLY N. PARRINGTON-MURCHISON, Rifle, CO
transferred to KELLY and JEFF SEEGER, Schertz, TX
10/1/2010

23334-S -The Stallion, HEART MT. MIDNIGHT SPECIAL (C.1831)*
from F. J. PFANNENSTIEL, Powell, WY transferred to
COLLEEN COLEMAN, Bondurant, WY 10/1/2010

23338-S -The Stallion, FOUR L'S BLACK STARCASTLE JOHN
from LEANDRA REUBLE and CLIFF KELSEY, Coupeville,
WA transferred to LEANDRA REUBLE, Coupeville, WA
9/20/2010
transferred to LAWRENCE REUBLE, Quincy, WA 11/1/2010

23570-M -The Mare, LOXTERCAMP'S MAY BELLE
from LISA ROGERO, Ranger, GA transferred to JAMES and
JENNIFER CLAIR, Buford, GA 2/27/2011

23934-M -The Mare, SASY FARMS GALLANT LACE
from BRIT C. and SHARON McLIN, New Castle, CO
transferred to DENNIS HOLZRICHTER, Denver, CO 1/2/2011

24016-M -The Mare, SUDDEN CREEK FLORA*
from WENDY GARRETT, Meeker, CO transferred to ANGELA
LONG, Buffalo, WY 12/24/2010

24075-M -The Mare, STERLINGSHIRE LADY ALISON
from BEVERLY TISDALE, Pinson, AL transferred to ERIC and
TRACY BATSTONE, Ocala, FL 11/16/2010

24157-M -The Mare, ILLUSION FARMS DACIOUS DAKOTA
from RANDI LUBY, Odessa, TX transferred to VERNON and
NINA STEVENS, Hobbs, NM 1/2/2011

**24176-M -The Mare, EATON ACRES MASTERMIND'S APRIL
MAGIC**
from MELISSA WADE, Bedford, VA transferred to MELISSA
WADE, Bedford, VA 1/5/2011

**B-24207-M -The Mare, CHESTNUT OAK'S FOXY HOPE (7/8
SHIRE)**
from SCOTT and WENDY RAGER, Beaver Springs, PA
transferred to MARGARET (PEG) CARROLL, New Orleans, LA
12/13/2010

**24387-M -The Mare, EDWARDS ROYAL BLUE OF VISTA
RIDGE***
from THOMAS F. EDWARDS, Fairfield, ME transferred to
HILLARY LaMANNA, Hockley, TX 1/1/2011

24493-M -The Mare, SHANNASHAWNS LADY CLAUDIA
from JAMES JEFFREY VANNURDEN, Litchfield, MN
transferred to RUSSEL A. BRAND, Zimmerman, MN 1/10/2011

24535-M -The Mare, RM'S HOLLY GOES LIGHTLY
from TURIE and MICHAEL SORRELL, Concord, VT
transferred to JEFFREY and CHARITY O'DELL, Lowville, NY
11/16/2010

24552-M -The Mare, PERFECT PEACE DANCING MOONLIGHT
from KATHY WHITAKER, Quarryville, PA transferred to
SHANE and ANGELA ALBERTS, Imperial, NE 11/22/2010

24553-M -The Mare, DUKE'S SADIE
from SHARON N. DUKE, Greeneville, TN transferred to
DANIEL TODD RIEDEL, Seville, OH 12/3/2010

24560-M -The Mare, JENSON'S DIPLOMAT AMY
from JENSON SHIRES, Blair, NE transferred to MIKE and
JULIE HODZIEWICH, Wellington, CO 1/1/2011

24561-M -The Mare, JENSON'S MONTE JOYCE
from JENSON SHIRES, Blair, NE transferred to MIKE and
JULIE HODZIEWICH, Wellington, CO 1/1/2011

Interested in the Tax Filings of ASHA?

*They are now
available to the
membership.*

Go to
www.shirehorse.org

**Under the Information Tab
You will find them listed.**

**It is a PDF and can be
downloaded.**



MEET THE MEMBERSHIP

Hillary La Manna, La Mancha Ranch, Hockley, Texas, h.lamanna@sbcglobal.net

I grew up in upstate New York around a family friend who owned quarter horses for over 30 years. Linda Waldschmidt is to be credited for having ignited my equine passion as a young girl, she is my equine inspiration and role model. The last horse she had was none other than Oxkill Lumberjack, a beautiful black Shire who stood over 18 hands. She claims that God's intention was to save the best for last.

Fast forward 20 years, and my husband and I bought our property in an equestrian community with the purpose of having our own horses, a lifelong dream. After hours of endless internet research in the difficult choice of which breed to choose and reading up on the temperament and qualities of dozens of breeds, I was always ending up on the English Shire and remembering Linda's Jack. With that in mind I continued my search and ended up stumbling across an ad in Shires 4 Sale for a beautiful dark bay Shire. One look at her picture and that was all it took, I knew right away she was the one. Millie is the first horse I have ever owned and I could not have been more fortunate as she is my dream horse, more than I could have ever wanted in a horse. At 17.3 hands and 1800 pounds, besides unmatched beauty, she is gentle, forgiving, a real nurse mare and maintains balance in the pasture with the others. When the time came to add to the herd I decided on a beautiful 2 1/2 y/o mare in Troika Drafts from Vicki Schmidt and I purchased, Edwards Royal Blue of Vista Ridge. I plan on adding more to the herd over time in addition to breeding Millie.

I ride Millie in an English saddle and plan on training Royal in dressage when the time comes as Royal floats when she moves and is a high stepper, she takes after her sire 'Willy', making her a perfect candidate for dressage.

I would like to contribute to helping ASHA in promoting this most fascinating breed with special mention to the research and education foundation. I feel there is so much that has yet to be discovered in keeping our gentle giant family members healthy and sound.



THINKING ABOUT SHOW TIME

By: Don Langille of Bigshoe Stables in OK

A question commonly asked is when do I need to start getting my horse ready for shows? The answer is at least 3 months, depending on age and what type of show. For a national show you want 4 to 5 months, but for a county fun fair a couple weeks will do. Also, what discipline you are doing can alter the schedule as well. A foal will not take as long, but if you are going to be driving them, you will need more time.

But regardless when you need to start, they all need the same things done right. They all start with a good nutrition program along with routine deworming. Getting your horse in condition for shows takes the longest. If they are underweight from a hard winter or poor pasture, they need to be put back into top condition. Shows are hard on horses. If you do a lot of shows, they need to be in excellent shape when you start. Younger horses take more feed and time to get in good condition as they are growing. Keeping them wormed and having them on a good mix of vitamins and minerals will go a long way to making your feed more efficient.

Care and maintenance of the feather needs to be started at least 3 months before you plan to show. Keeping them oiled and free of scratches is very important. The use of spats also helps. Watch what kind of bedding is being used, so as not to stain the feather, as well as the moisture level in the stalls. These things will save you time and headaches when you are trying to have the feather white for the show.

Horses are like any athlete that competes; they need to be in shape. They need plenty of exercise to build muscle and training to teach them what to do. If you are doing halter, then they need to be worked with so they know how to trot right and how to get their feet set right. If you set them up every time you have them out, they soon catch on to it, and it becomes routine. That is a valuable tool, as they can easily become distracted in the show ring. If they have not done any setting up before, it can become very frustrating to you. They also need to have had their mane and tail done before the day of the show. There is enough stress to the show that they don't need any additional first time events like braiding the mane and tail. Once again, if they are used to it, then it becomes no big deal. If the horse is going to be driven, time must be spent on that as well.

Shoeing is an interesting topic for many. If you don't believe in big show shoes, that opinion is your right. However, if you want to compete, then you will need to learn to live with it. The horses you will be showing against will most likely be shod. There are some people who believe that show shoes hurt the horses, but that is not the opinion the majority of the time. A horse with a good solid foot, that has a good fitting shoe with a nice pad to enhance it, will be sound and competitive. These horses are not shod all year long except in rare cases and will do no harm to their feet. You need at least 2 resets to make the foot look good. Start with a smaller shoe and work up to a bigger one over time.

Planning your show schedule is important as well. Where you want to go determines when you start. Remembering to have current coggins papers and health papers as well as your registration papers in order, that will make it more stress free for you. The main thing to go into the show season thinking about is why you are doing it: the thrill of competition, the chance to show off what you have, the joy of seeing old friends and making new ones, or maybe selling a horse. Remember, the judges are human too and a long way from perfect. Whether they are good or bad in your opinion, it is still just one person's opinion. If you don't understand something, you can ask questions after the show. Most judges will gladly answer you and try to help you as best they can. Regardless of why you are showing, you need to enjoy it for what it is. Too many people get too serious and take the fun out of it for themselves and others. If you cannot relax and enjoy showing, then you should probably not do it.



TROYER CARRIAGE COMPANY



~Parts~
~Accessories~
~Craftsmanship~

*Proud Sponsor of
ASHA Cart Raffle*

Handcrafted in the USA

www.troyercarriage.com



TROYER CARRIAGE COMPANY, INC.

280-A North Village Dr., Shipshewana, In 46565

(260) 768-7135 Fax: (260)768-7137



Pamela Correll, Secretary

1211 Hill Harrell Road
Effingham, SC 29541

Coming Next Time:

Geriatric Horses and Their Care
Taking Pictures of Your Horses
"NEW" Meet the Members
Your Members News

"A horse is the projection of peoples' dreams about themselves - strong, powerful, beautiful - and it has the capability of giving us escape from our mundane existence"

~ Pam Brown